

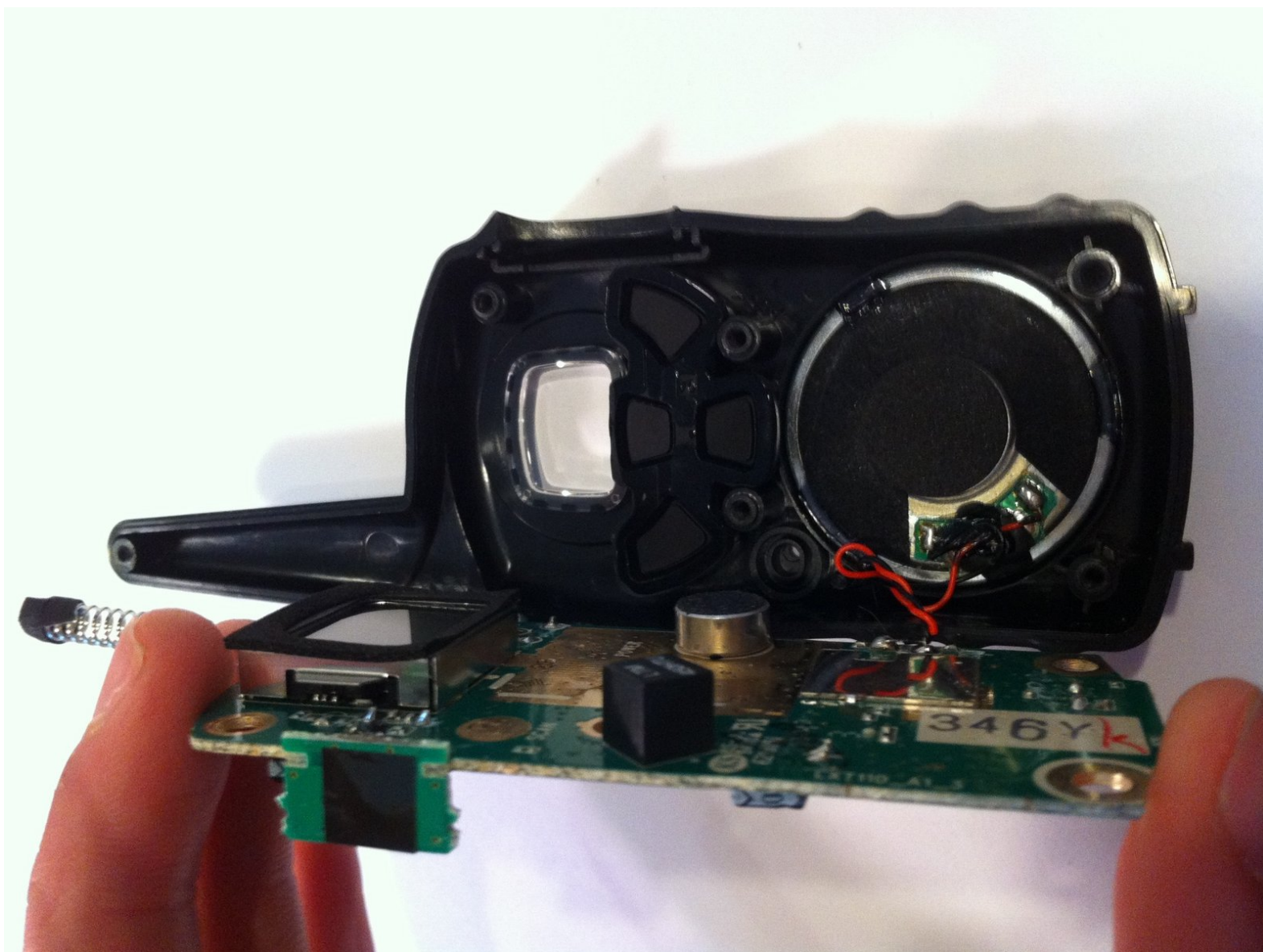


Disassembling Midland X-tra Talk Radio

LXT118 Speaker

This is a prerequisite only. This guide explains how to properly remove the speaker from the device.

Written By: James Tucker Dunn



INTRODUCTION

The speaker is attached to the circuit board with two wires and is glued onto the front case. After the speaker is removed the new speaker will need to be re-glued and re-soldered into place.



TOOLS:

- [Phillips #0 Screwdriver](#) (1)
- [Spudger](#) (1)
- [Flush Wire Cutters](#) (1)



PARTS:

- [Midland Speaker](#) (1)

Step 1 — Disassembling Midland X-tra Talk Radio LXT118 Batteries



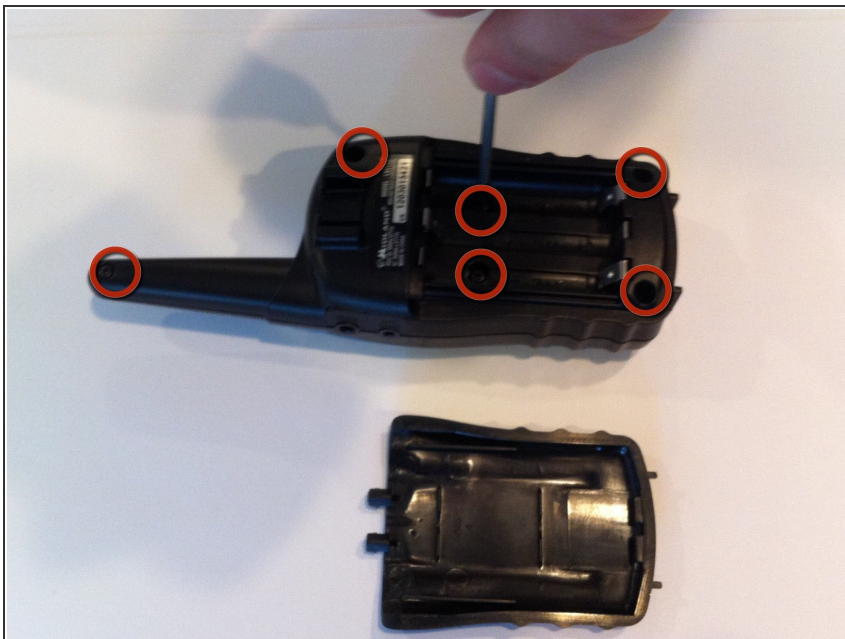
- First, apply pressure with your thumb on the top of the battery cover.
- Next, pull down on the cover until it begins to slide.

Step 2



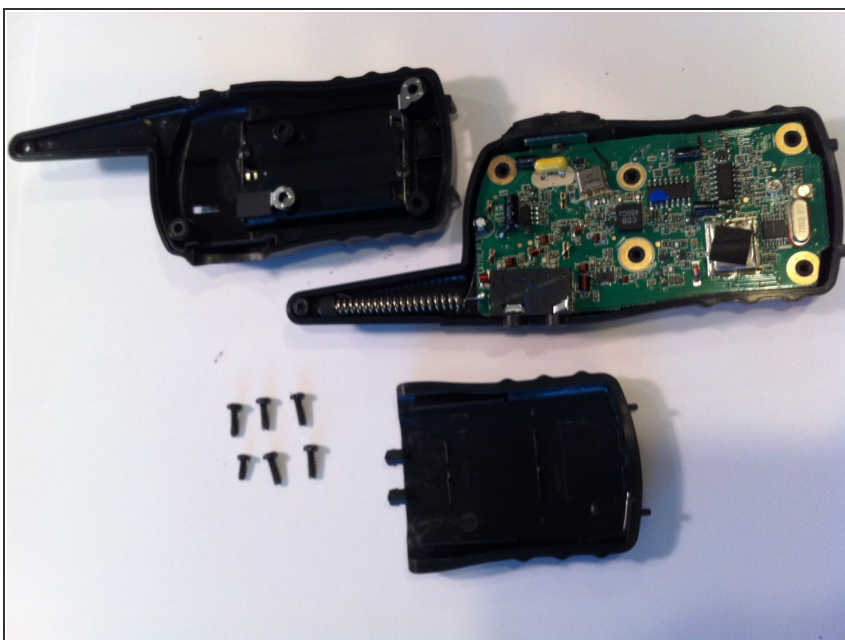
- Finally, once the cover is completely off, pry up the old batteries with your finger or a strong, skinny tool (i.e. spudger).

Step 3 — Case



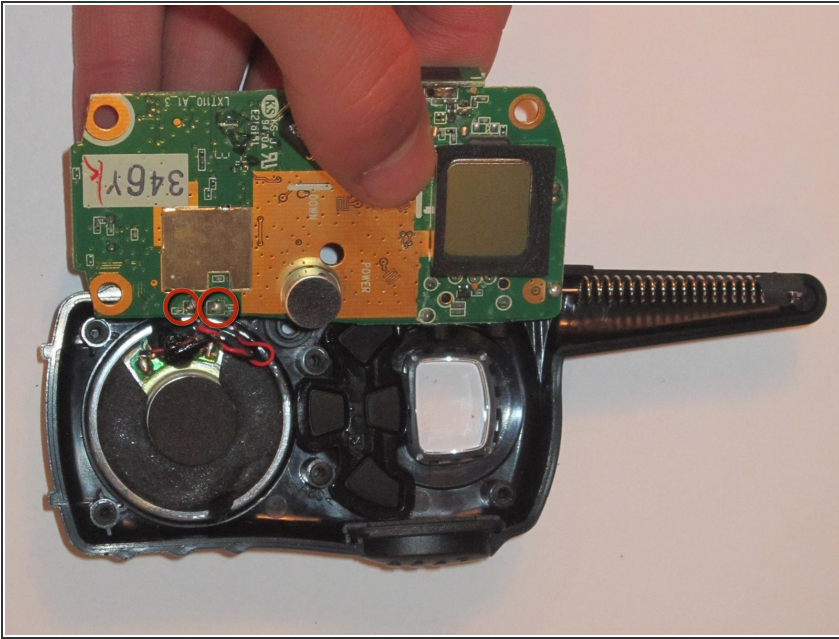
- Unscrew the six 8.0 millimeter long, #0 screws on the backside of the case using the Phillips #0 screwdriver.

Step 4



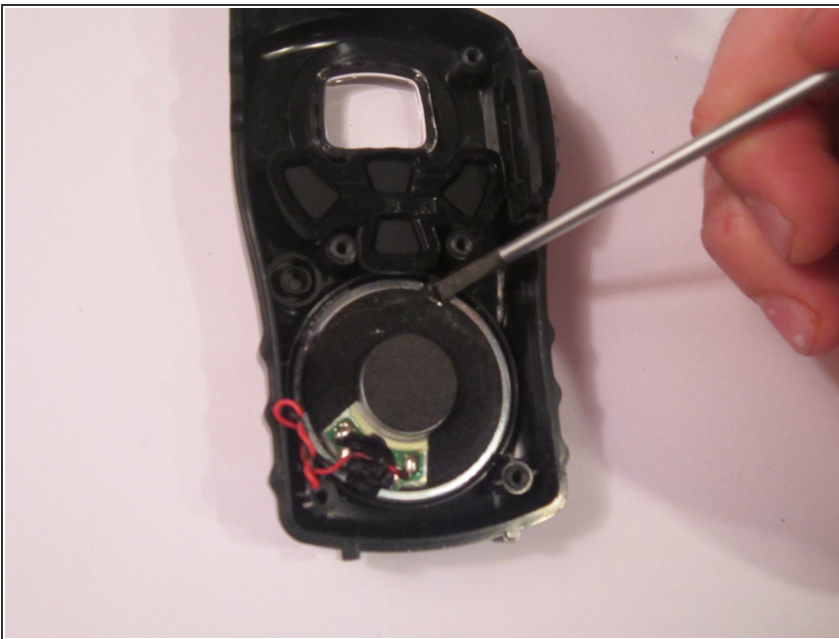
- Detach back part of the case by gently lifting up.

Step 5 — Speaker



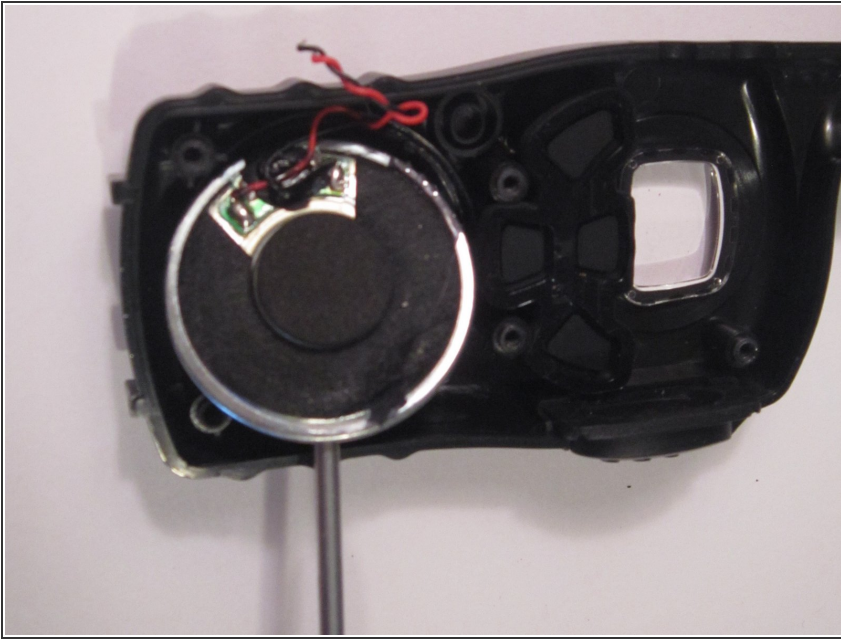
- Remove the circuit board from the front part of the radio case.
- Clip the red and black connecting wires at the base closest to the circuit board in the spots denoted by the two red circles.

Step 6



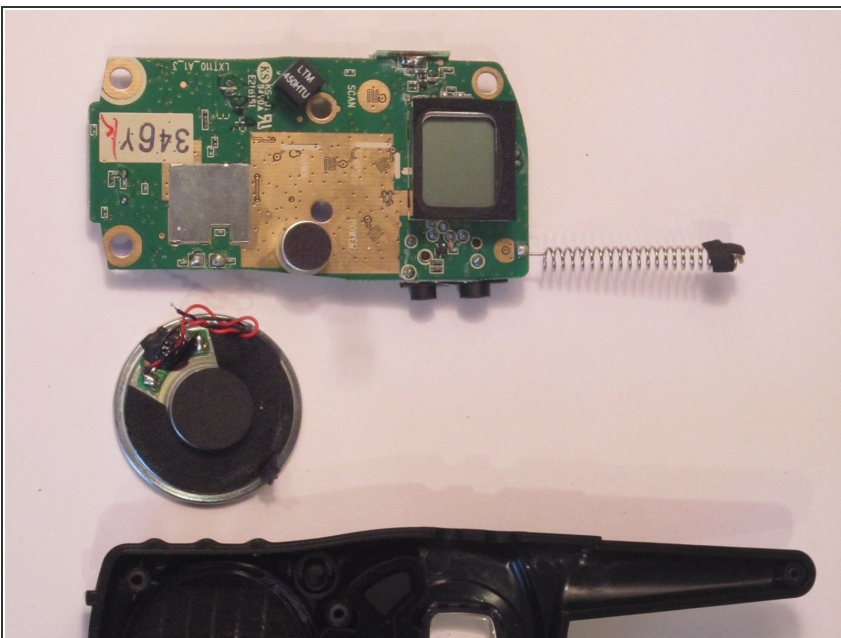
- Scrape off the glue on the outer lining of the speaker using the metal spudger.

Step 7



- Pry the speaker from the case using the metal spudger.
- ⓘ This should not take excessive force, so make sure all remaining glue is scraped off from the edges if it will not easily come out.

Step 8



- The speaker is now disassembled!

To reassemble your device, follow these instructions in reverse order.