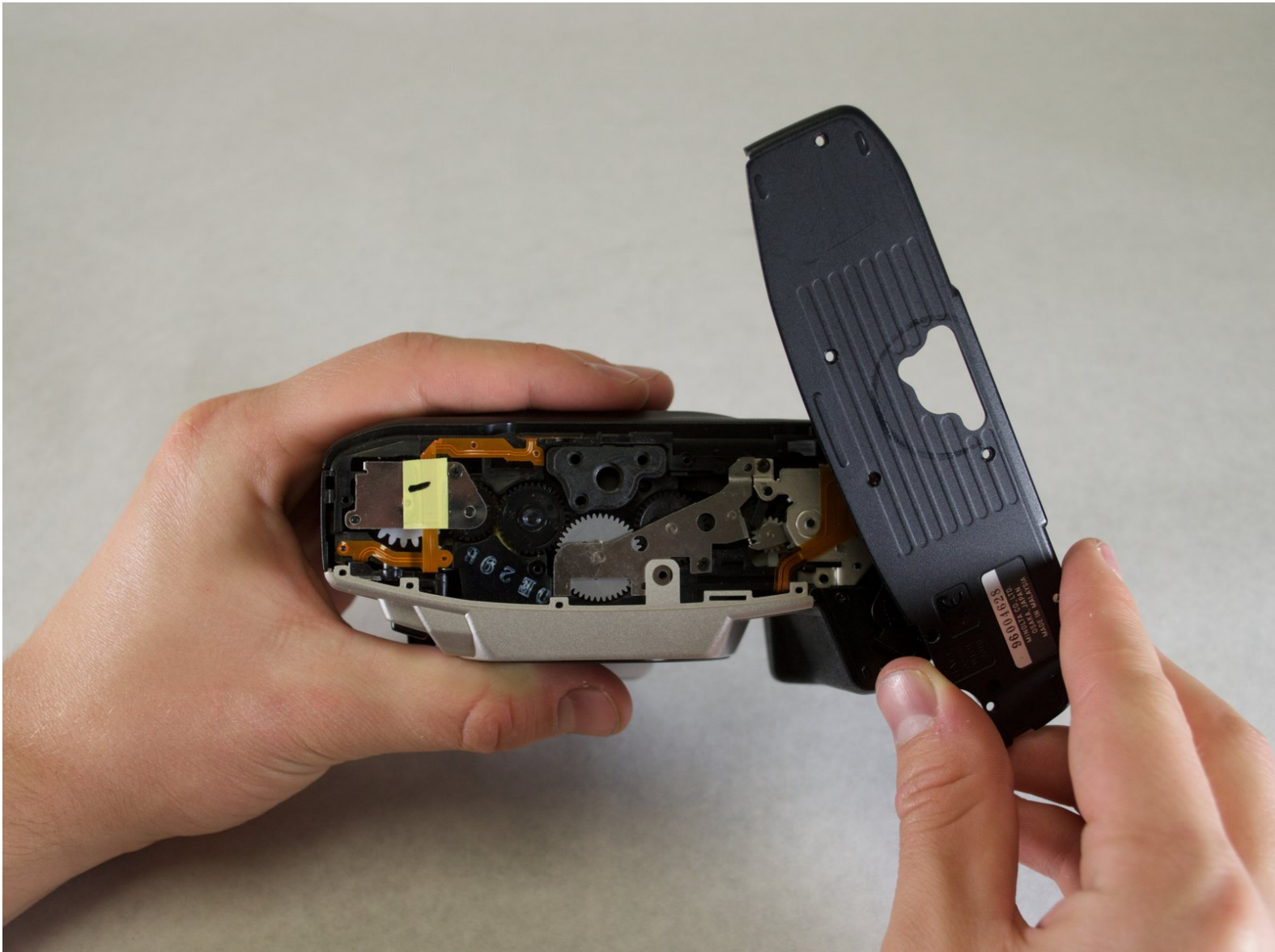




Disassembling Minolta Maxxum STsi Bottom Panel

Prerequisite Only

Written By: Jacobe Labog



INTRODUCTION

The bottom panel is easy to remove requiring only a Philips screwdriver with a #00 head.



TOOLS:

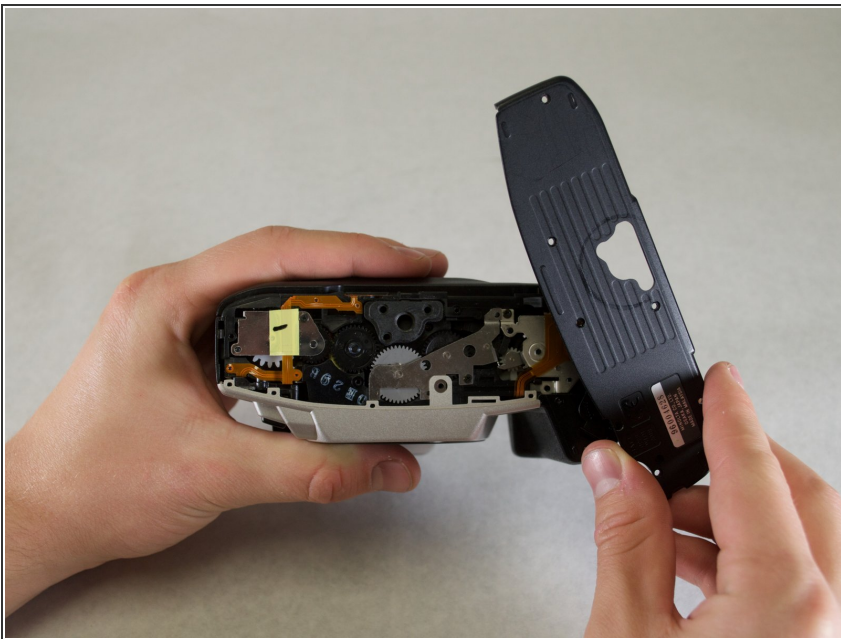
- [Phillips #00 Screwdriver](#) (1)
-

Step 1 — Bottom Panel



- Remove the seven black Phillips #00 5.0 mm screws.

Step 2



- Gently remove the bottom panel using your fingers.

To reassemble your device, follow these instructions in reverse order.