

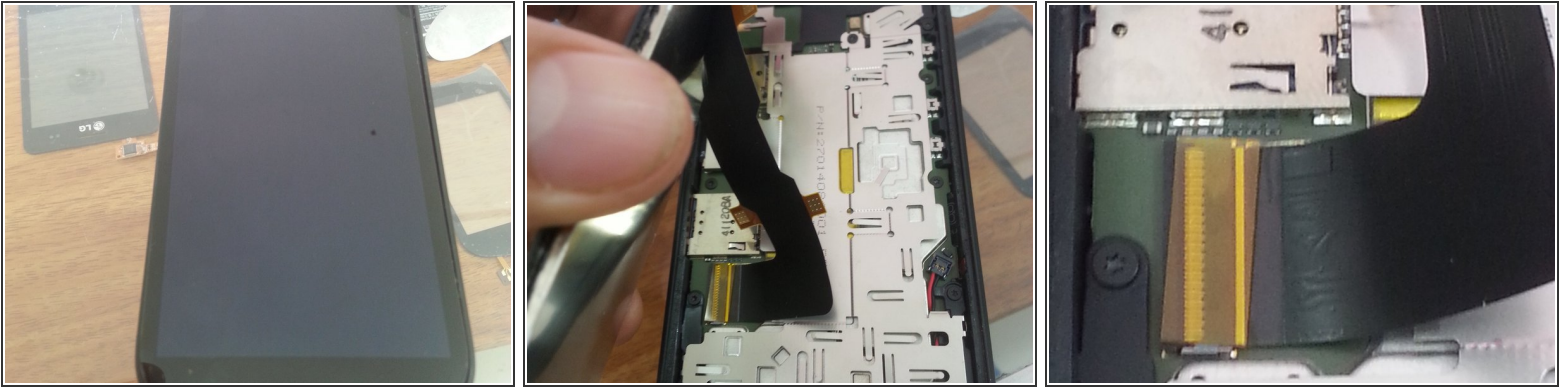


Disassembling Moto E 2 Desmontagem

Written By: Kandango

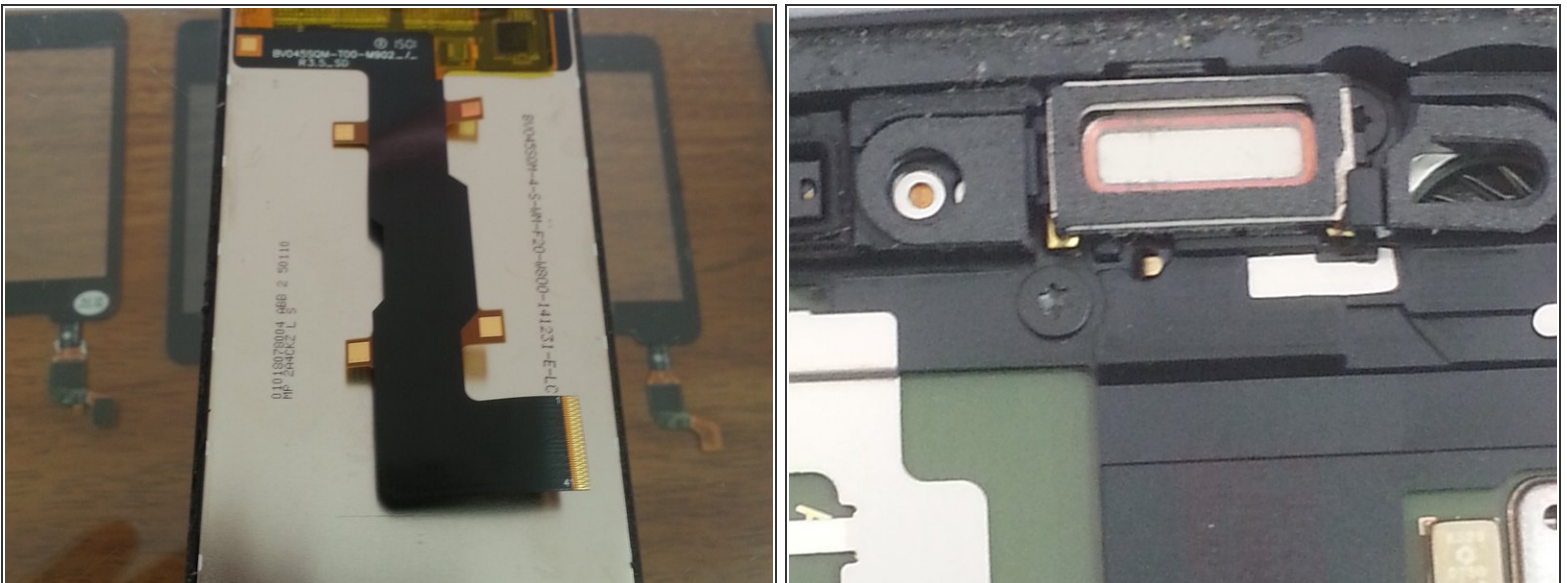


Step 1 — Disassembling Moto E 2 Desmontagem



- Moto E 2
- You have to warm the LCD to take out the housing, the paradises is to give access to the battery that is under the plate.

Step 2



- After detaching the LCD the housing has 16 screws that secure the board
- ❗ Note: there is a screw down the earpiece of the earpiece

To reassemble your device, follow these instructions in reverse order.