



Disassembling Motorola ES400

This guide will help you disassemble the Motorola ES400 to repair any broken parts that you need to replace.

Written By: Jordan Wires



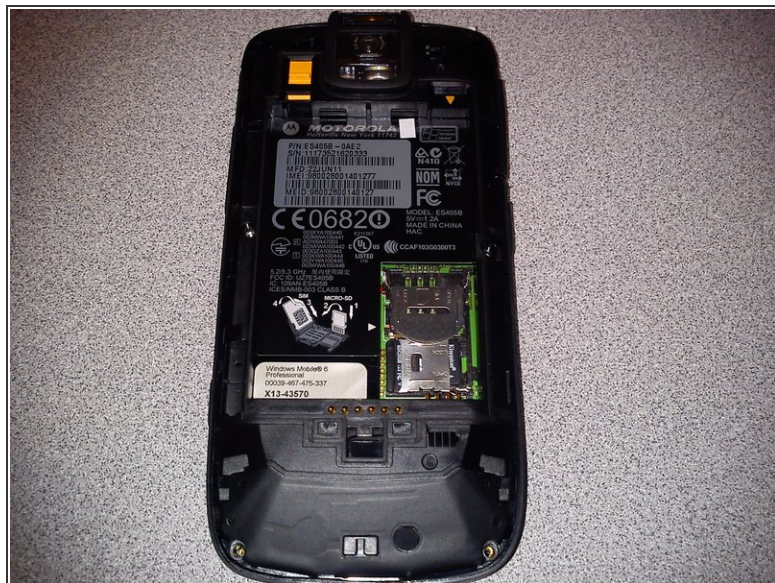
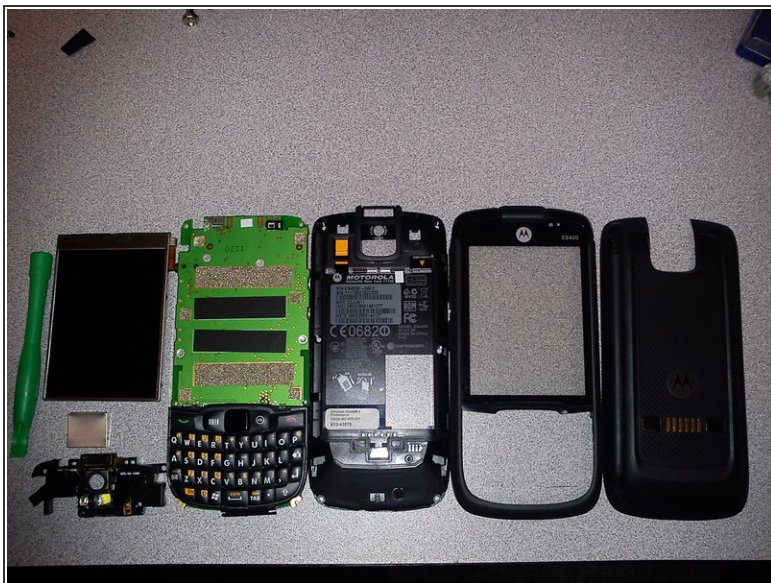
INTRODUCTION


The Motorola ES400 is used mostly in harsh environments and is rated to military spec but can still be vulnerable to being damaged.

TOOLS:

- [Phillips #000 Screwdriver](#) (1)
 - [iFixit Opening Tools](#) (1)
 - [Flathead 3/32" or 2.5 mm Screwdriver](#) (1)
 - [T5 Torx Screwdriver](#) (1)
-


Step 1 — Logic Board



-  Take the battery cover and battery out of the device and put the unit on its front.

Step 2



-  Remove a total of 6 T5 torx screws

Step 3



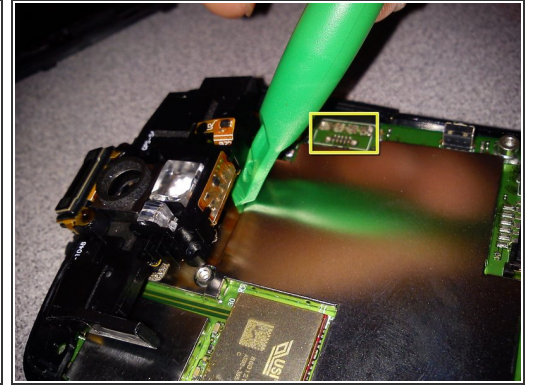
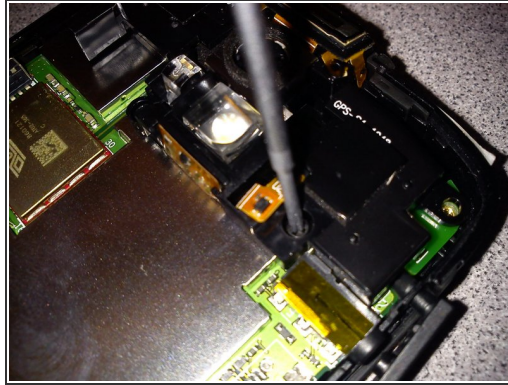
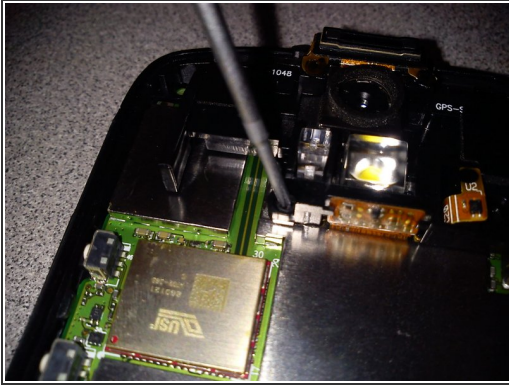
- After all 6 screws have been removed, start by using a plastic pry tool to separate the back panel from the side frame.
- Continue along the side near the volume buttons slowly separating the back panel from the frame.
- Once the back panel has been separated from the frame slowly take it off, being careful not to break any plastic parts/clips.
- Keep track of your screws.

Step 4



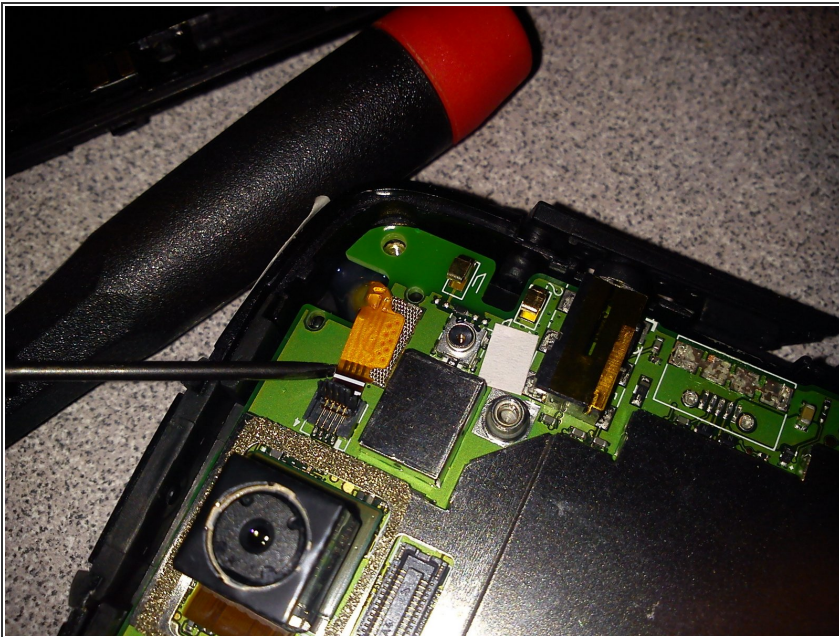
- Remove the back panel and set it aside.

Step 5



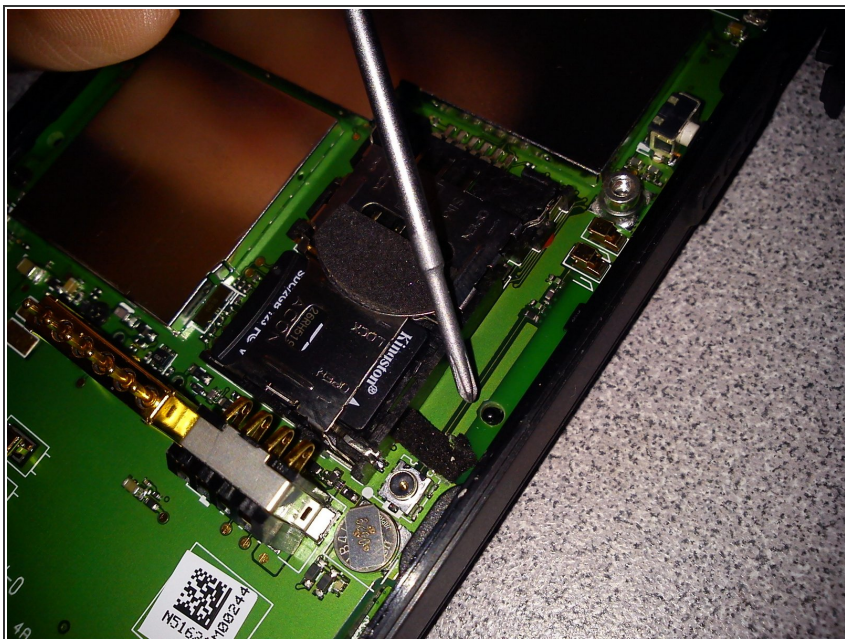
- Unscrew the 2 Philips head (+) screws to remove the camera flash module.
- This unit has a broken micro usb charging port.


Step 6



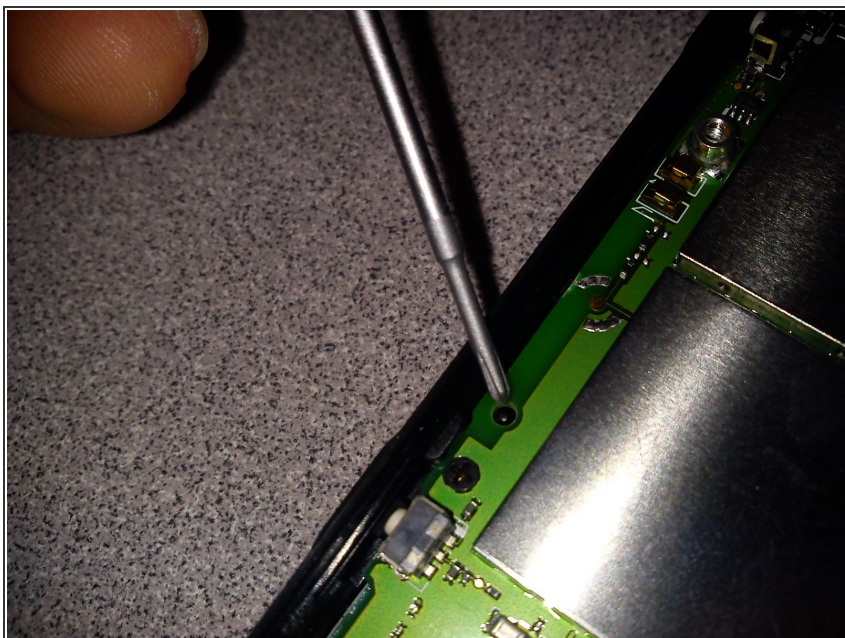
- After the camera module has been removed pull up any tape covering the digitizer flex cable.
- ⚠ Flip up the plastic lever and then slowly nudge the flex cable out of the socket.


Step 7



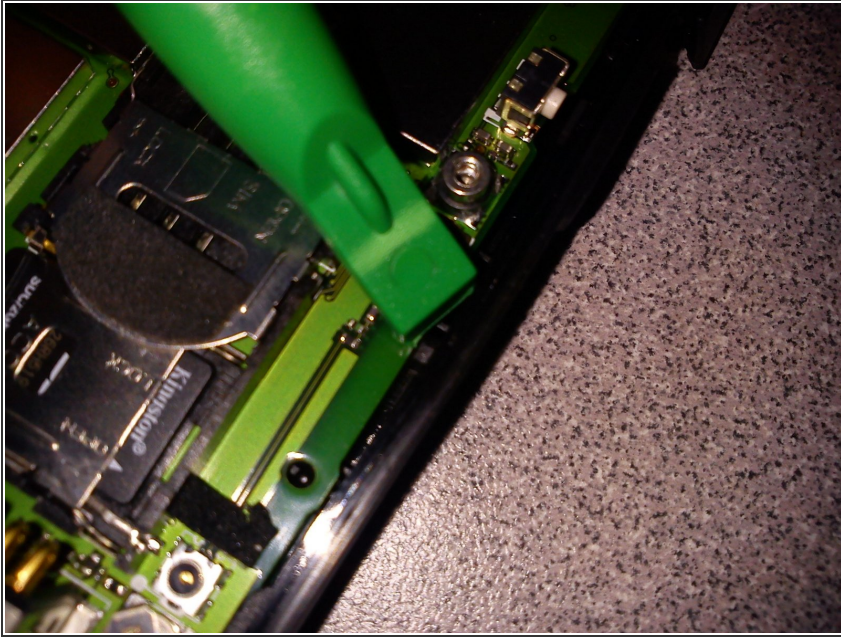
 Near the memory card slot on the right side carefully lift the logic board over the finger to release the logic board from the frame.

Step 8



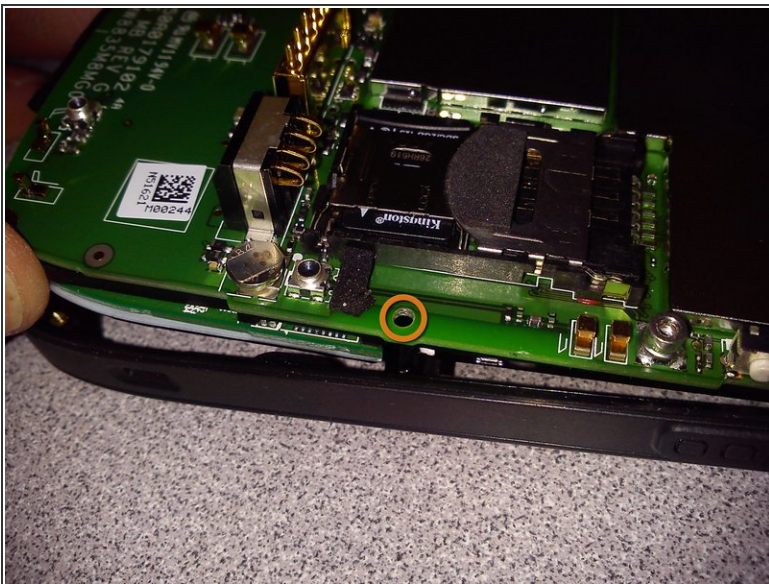
 On the left side carefully lift the logic board over the finger to release the logic board from the frame.

Step 9



⚠ After all the fingers and clips have been released/removed, use a plastic prying tool to carefully pry the logic board out of the frame.

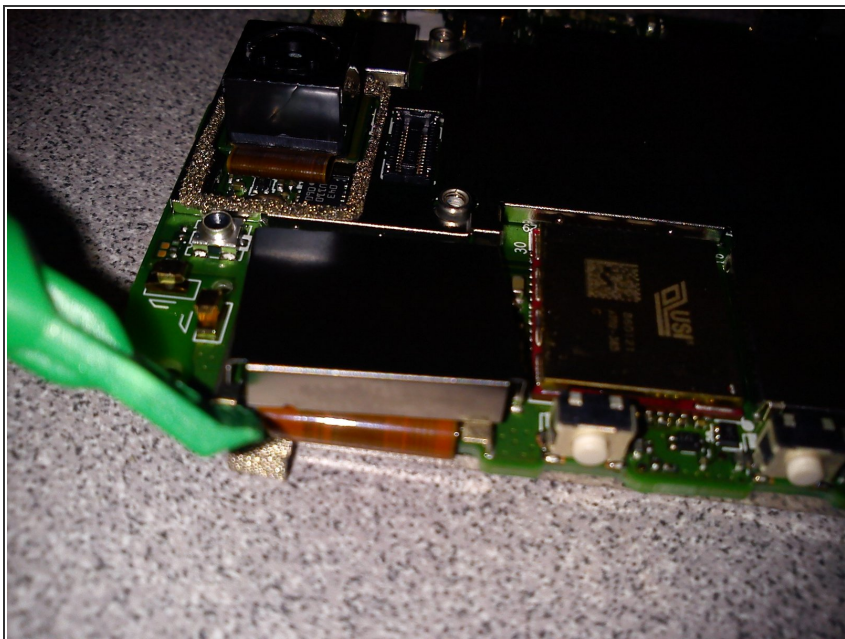
Step 10



- Slowly lift the logic board out of the frame starting at the bottom of the phone.

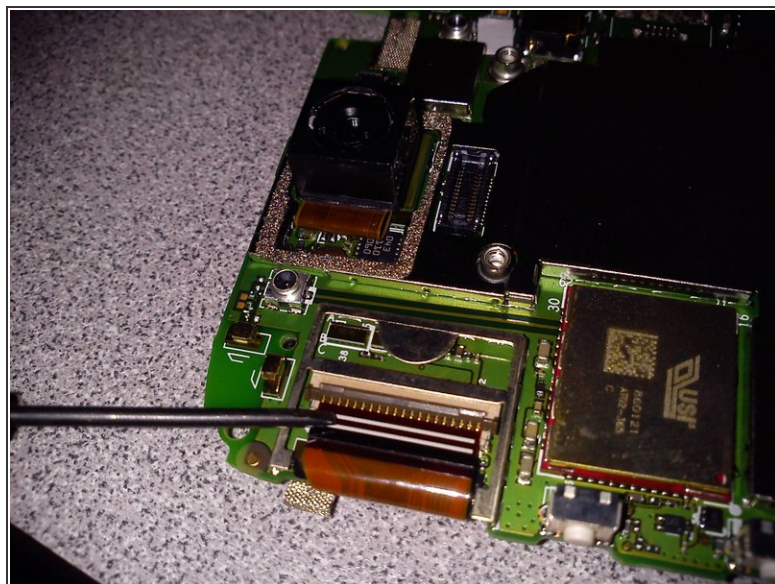
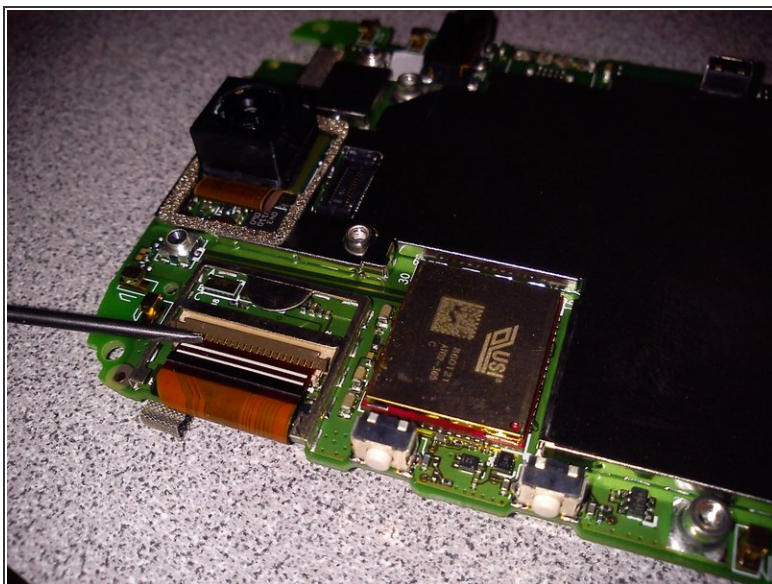
ⓘ (Fingers are released shown in orange)

Step 11



- Pry off metal cap to remove shielding to access LCD flex cable.

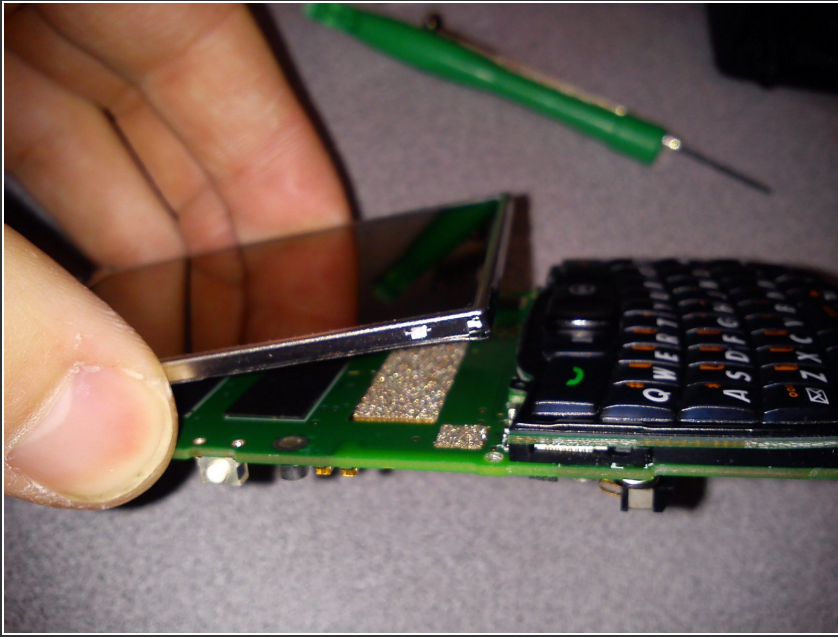
Step 12



- Use a flat head screwdriver to flip up the FPC connector.

⚠ Once the plastic flipper has been flipped, slowly nudge the flex cable out of the socket.

Step 13



- Slowly lift the LCD from the logic board
- ★ Be mindful of double-sided tape on the backside of the LCD holding the mainboard to the screen.
- i Always handle the LCD with care so you do not crack it or apply any finger prints to the face of the LCD

Step 14



- i Lay all the parts out so you can easily see what needs replacing or repairing.

To reassemble your device, follow these instructions in reverse order.