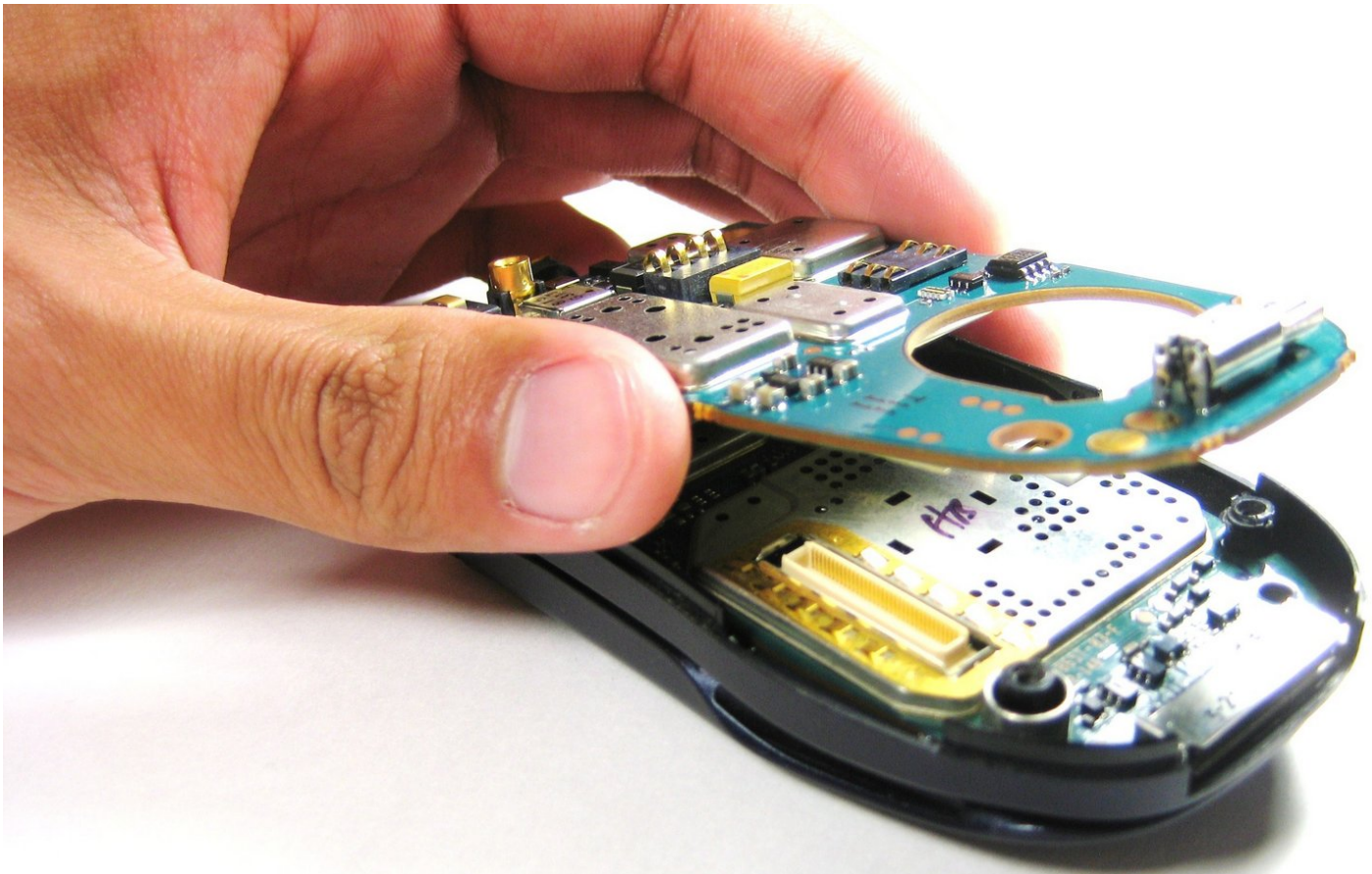




# Disassembling Motorola i90c Logic Board

Written By: Grant Glazebrook



---

# INTRODUCTION

This guide details how to remove the logic board.



## TOOLS:

- [Flathead 3/32" or 2.5 mm Screwdriver](#) (1)
  - [Tweezers](#) (1)
  - [T9 Torx Screwdriver](#) (1)
-

## Step 1 — Battery



- Slide the notch downward while pulling the back cover off to remove it.

## Step 2



- Use your fingers to push the battery upward from the bottom.
- Lift upwards to remove the battery.

## Step 3 — Antenna



- Unscrew the antenna in a counter-clockwise fashion.
- Remove the aluminum cover.

## Step 4 — Internal Backplate




- Unscrew the 3 screws shown.
- Lift up the right part of the Nextel logo and unscrew the screw underneath.



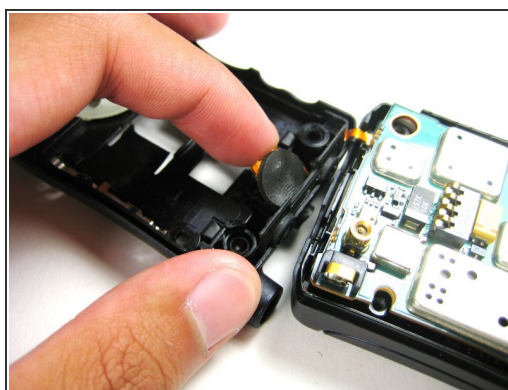
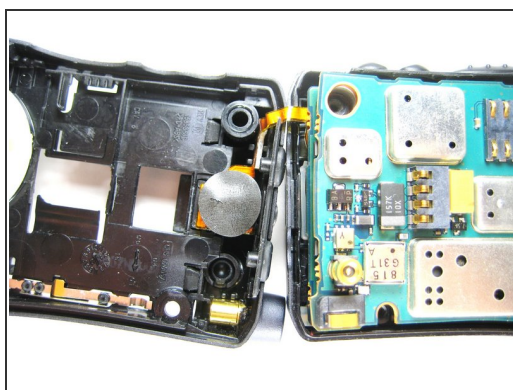
## Step 5



 DO NOT force the cover off as it could damage the ribbon cable!

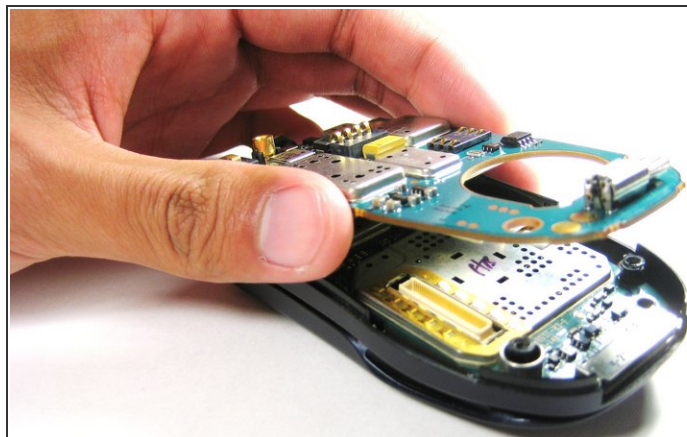
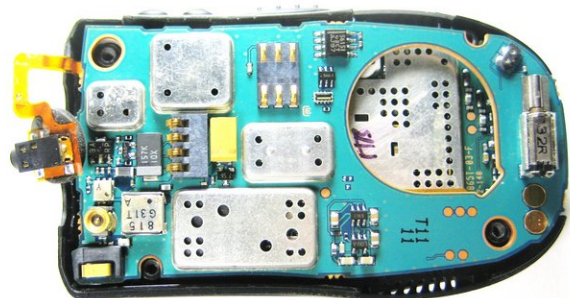
- Gently lift the back cover off.

## Step 6



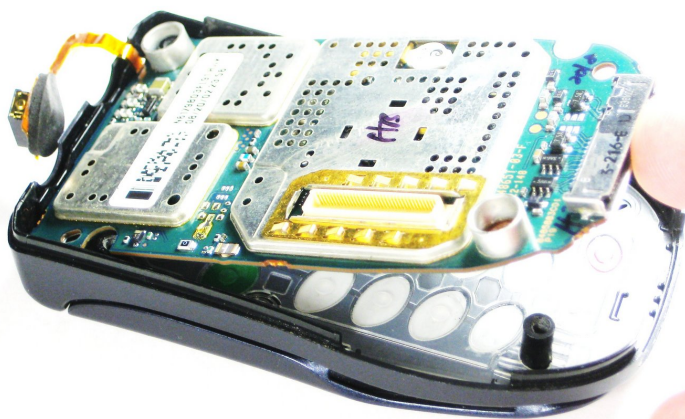
- Carefully pry off the connection between the headphone jack and logic board.

## Step 7 — Logic Board



- Lift the first logic board off of the rest of the device.

## Step 8



- Gently lift the second logic board from the rest of the device.
- ⚠ DO NOT force the board straight off as it could damage the ribbon cable!

## Step 9



- Using tweezers, carefully pull off the connector shown.

To reassemble your device, follow these instructions in reverse order.