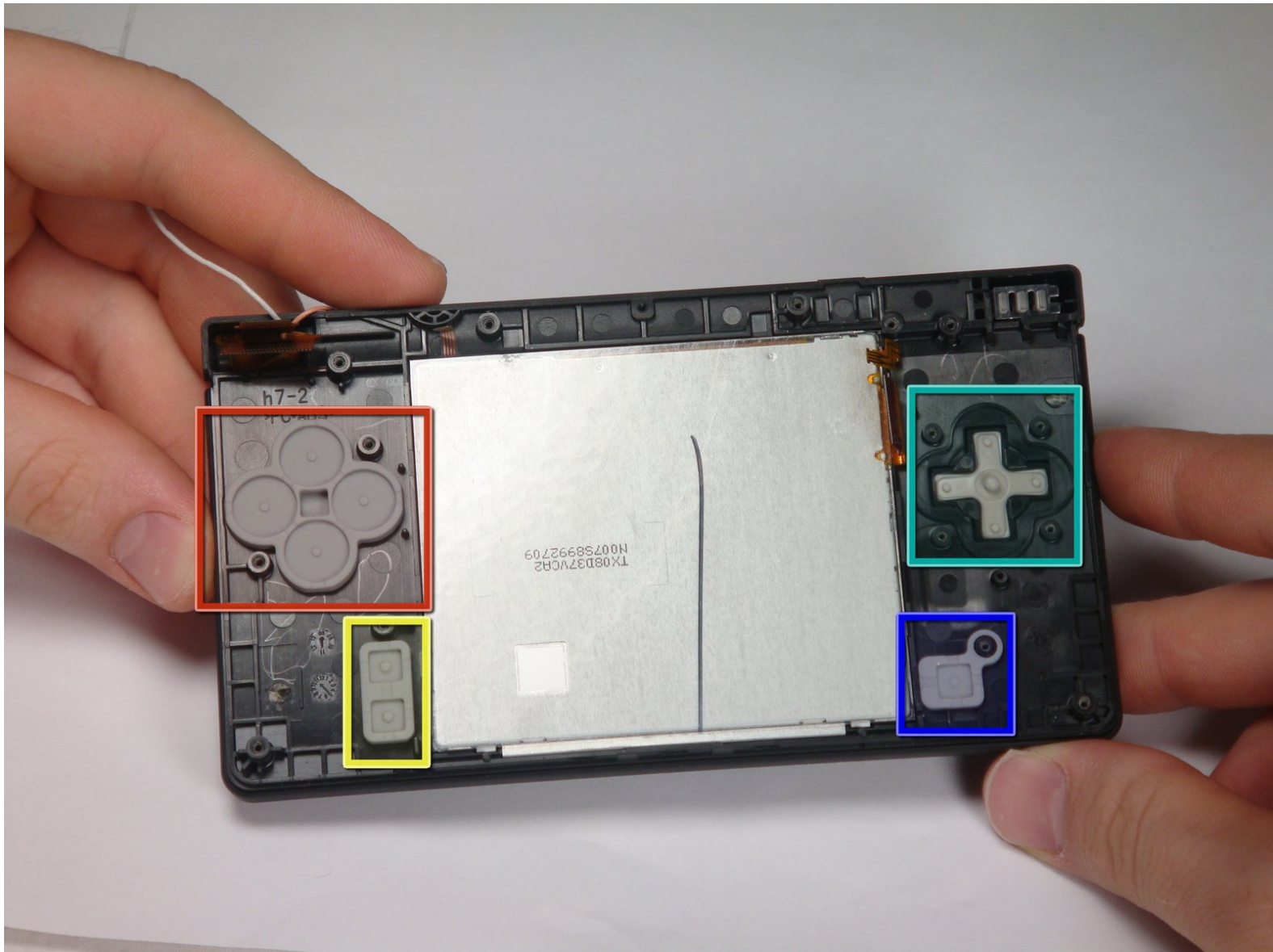




# Disassembling Nintendo DSi Bottom case

Written By: rjcamero



## INTRODUCTION

**This guide has been updated by iFixit staff! Read the new, official guide [here](#).**

A guide on how to disassemble the bottom case assembly, including removing the LCD and buttons.



### TOOLS:

- [Metal Spudger](#) (1)
- [Phillips #00 Screwdriver](#) (1)
- [iFixit Opening Tools](#) (1)
- [Spudger](#) (1)
- [Tweezers](#) (1)



### PARTS:

- [Nintendo DSi Touchscreen](#) (1)

## Step 1 — Battery



- Loosen the two screws on the battery panel. Then lift the panel up to remove it.

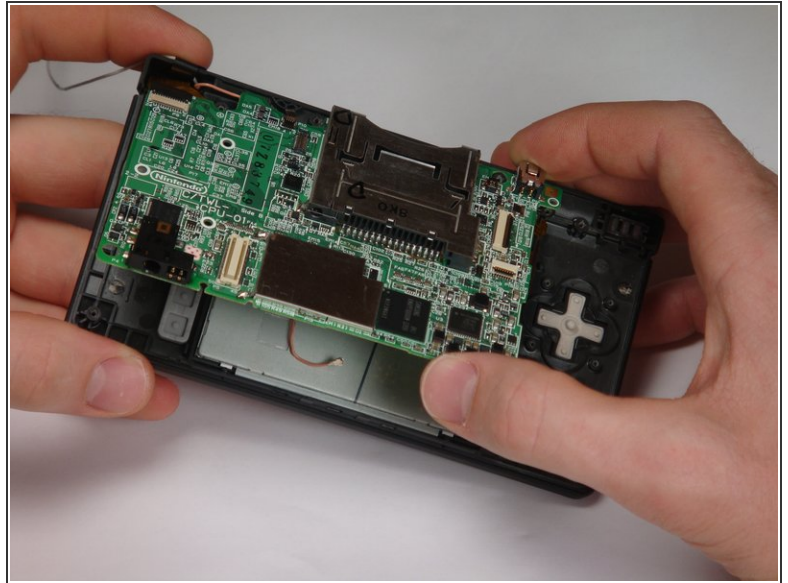
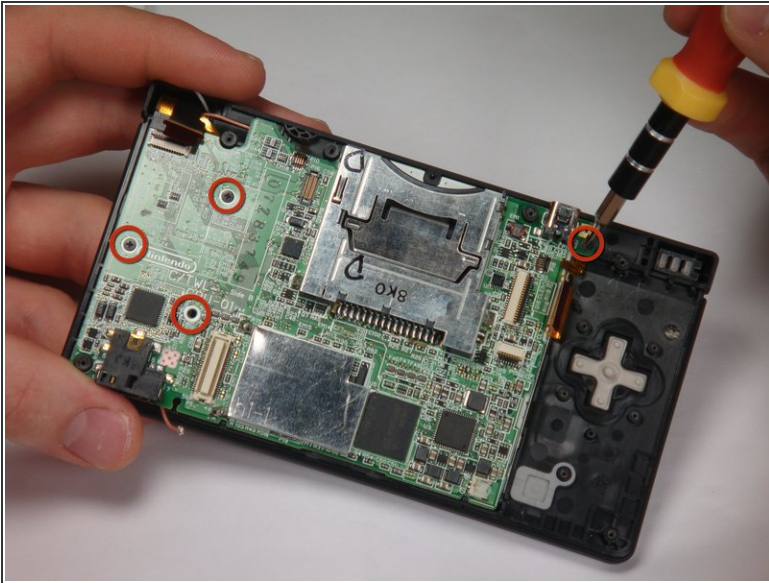
## Step 2



- L Button.
- Top of the battery pack.
- To remove the battery pack, place your fingernail or a spudger at the top of the battery near the L button. Gently lift the battery out.

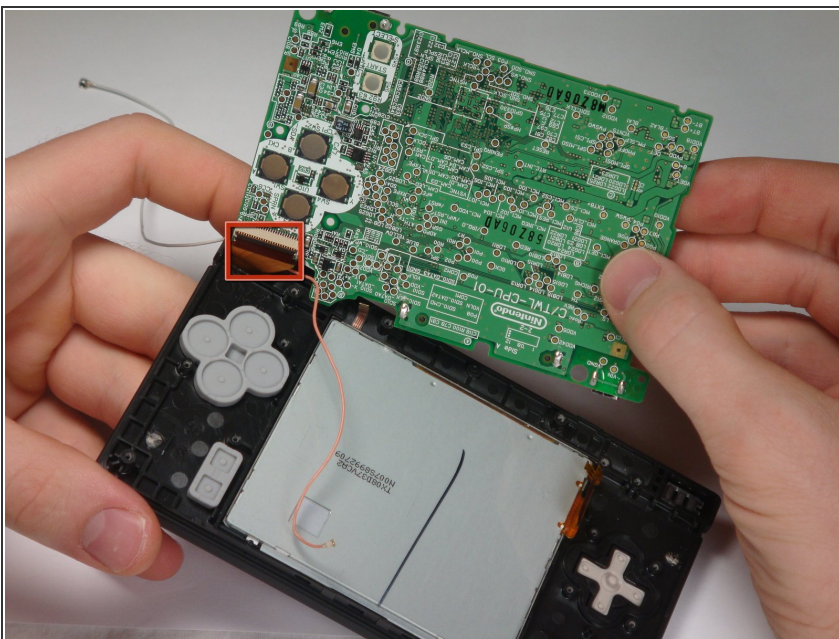


## Step 3 — Motherboard



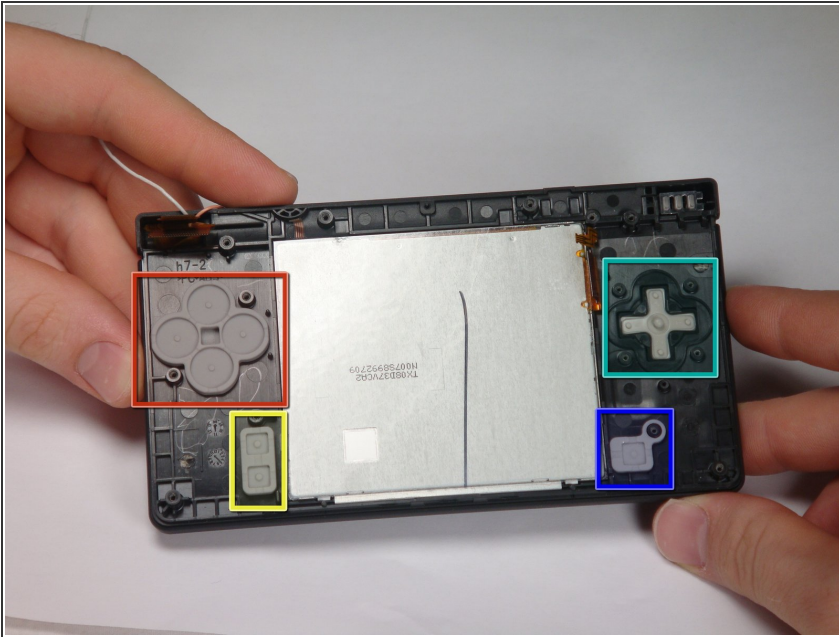
- Remove 4 Phillips screws from the board.
  - Lift the main board from the bottom end and flip it over to reveal the last connector.
- ⚠ Keep the main board fairly close to the case, making sure not to damage the last ribbon cable holding it in place.

## Step 4



- Disconnect the ribbon cable by gently using a plastic opening tool to flip up the black connector latch. The cable should easily slide out from the connector.
- The motherboard should now be free from the rest of the device.

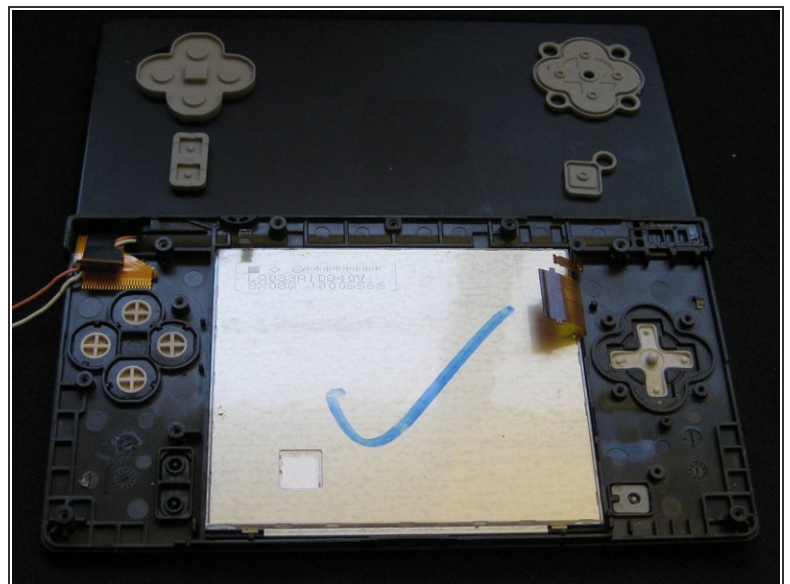
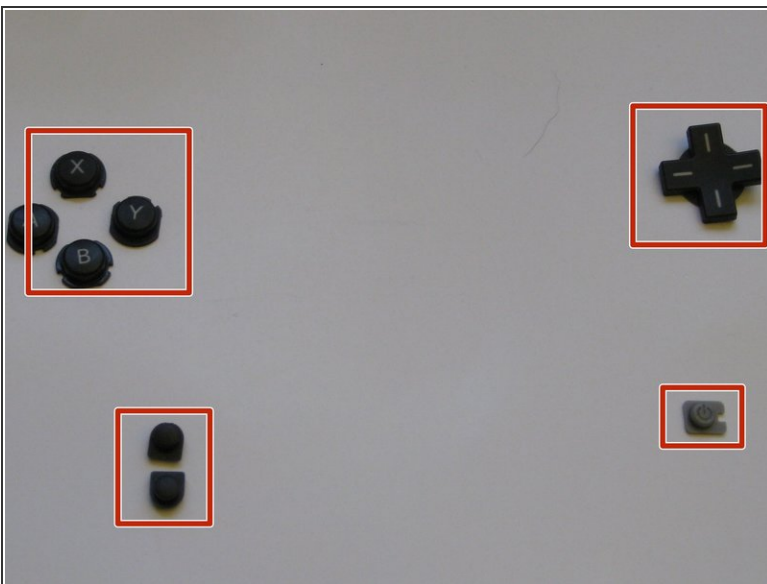
## Step 5 — Disassembling Nintendo DSi Bottom case



- ✦ Remove the rubber front-panel button membranes from the device. Pay careful attention to where the buttons go, so you can replace them correctly.

- A/B/X/Y button assembly
- Select/Start button assembly
- D-pad
- Power button

## Step 6

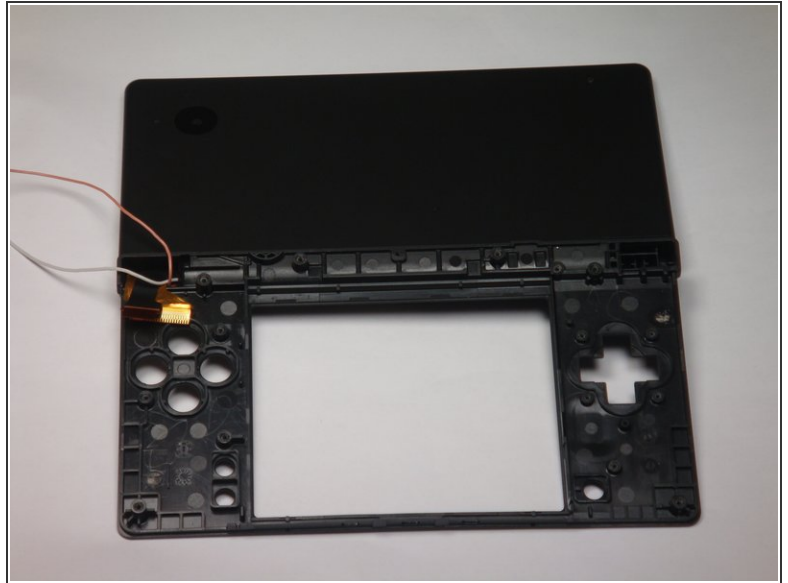
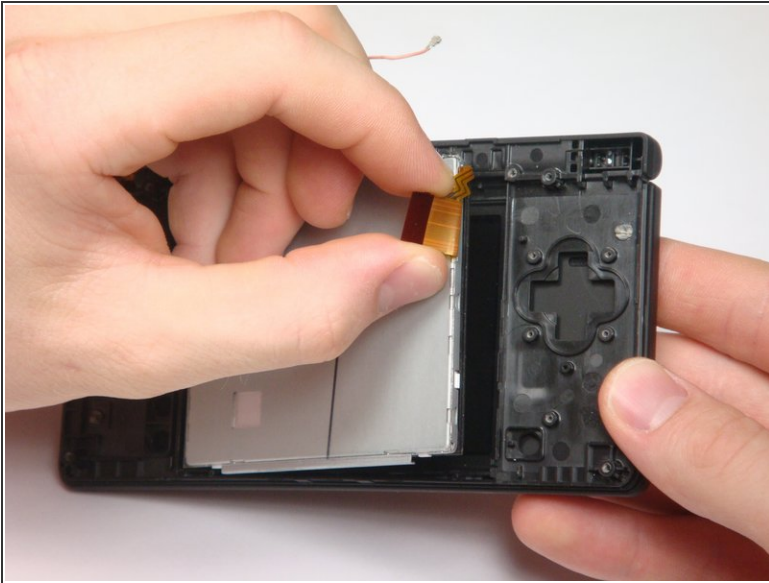


- Remove the plastic buttons and keep them in a safe place.

- ✦ All of the buttons have "key" notches to prevent them from being inserted incorrectly (backwards or in the wrong place), but it can take a while to figure out where everything goes if they get shuffled around.



## Step 7



- Flip the case open, and push the lower screen assembly out of the frame.

To reassemble your device, follow these instructions in reverse order.