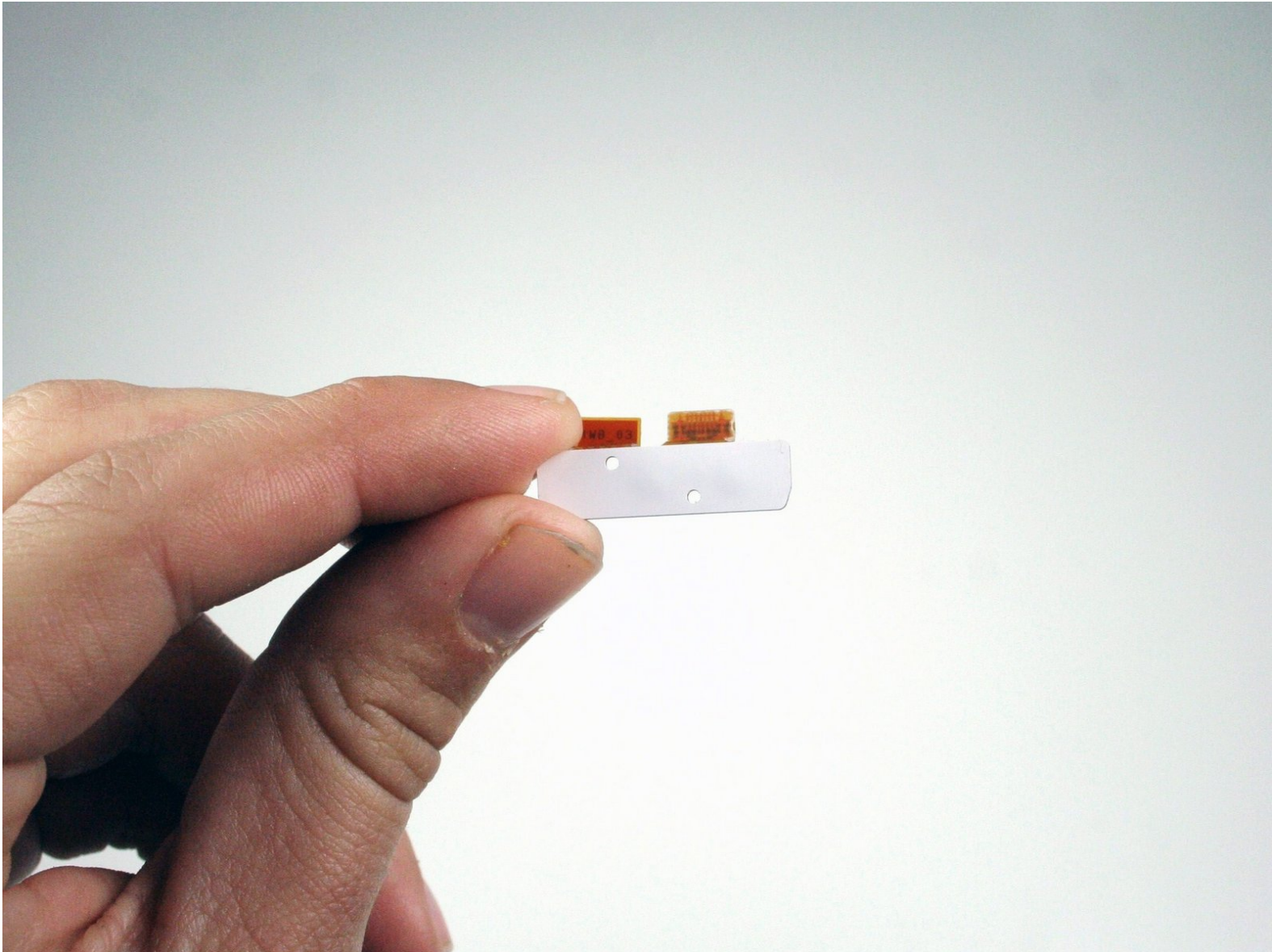




Disassembling Nokia 2366i Side Buttons

Written By: Jonathan Newman



INTRODUCTION

Removing the side buttons on the phone.



TOOLS:

- [Phillips #00 Screwdriver](#) (1)
 - [Spudger](#) (1)
 - [T6 Torx Screwdriver](#) (1)
-

Step 1 — Battery



- Turn off the phone.
- ⓘ Position the phone so that the back side is in view.

Step 2



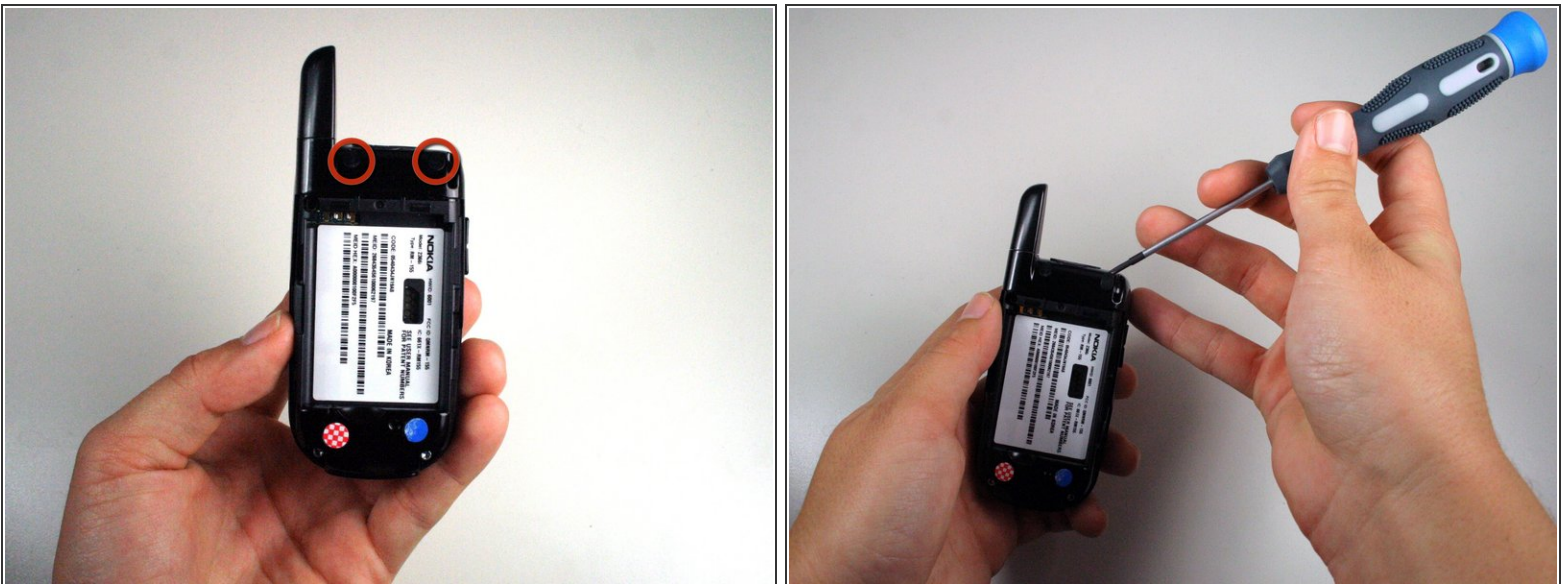
- Apply pressure on the cover while simultaneously sliding the cover downward.
- Remove the back battery cover.

Step 3



- Insert the spudger between the base of the phone and the phone battery.
- Position the phone so that the battery won't fall out of the phone.
- Carefully lift the battery out of the phone.
- ⓘ The battery lifts out of the phone easily.

Step 4 — Rear Case



- Use a Phillips #00 screwdriver or your fingers to remove the rubber tabs at top back of the phone.

Step 5



- Remove four 5mm screws from the back of the phone using a T6 Torx screwdriver:
 - 2 screws at the bottom
 - 2 screws at the top

Step 6



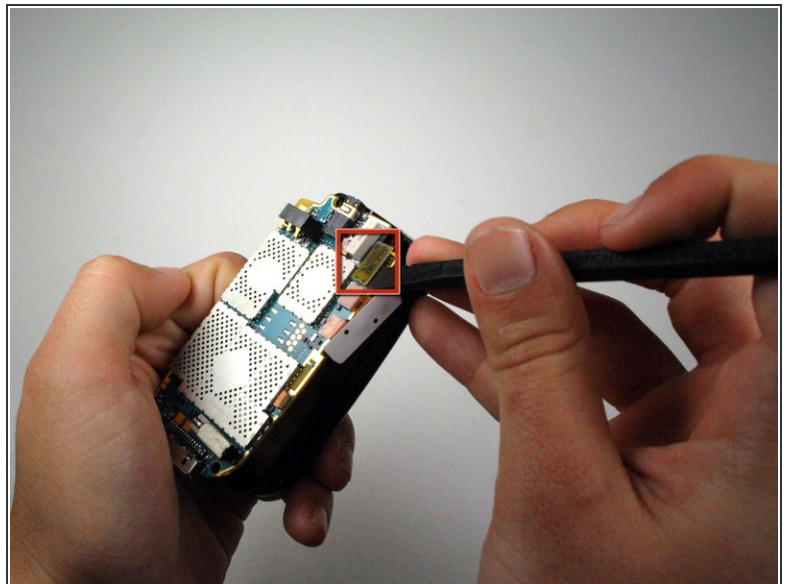
- ⓘ Rotate the phone clockwise so the edge is facing you.
- Insert the spudger in tabs between the outer casing and the inside frame.
- Slide the spudger upwards.
- ⓘ This will remove the rear case of the phone.

Step 7



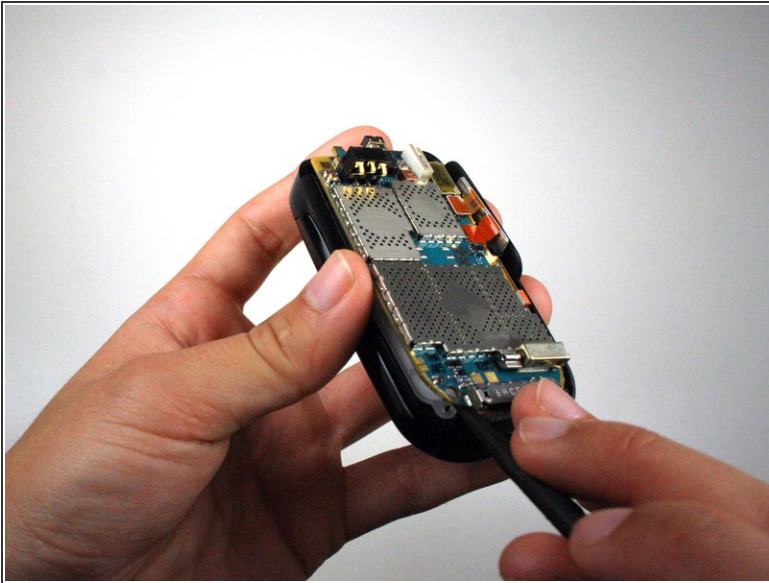
- The phone should now be in two different sections.
 - 1) The rear case of the phone.
 - 2) The motherboard and the rest of the phone.

Step 8 — Motherboard



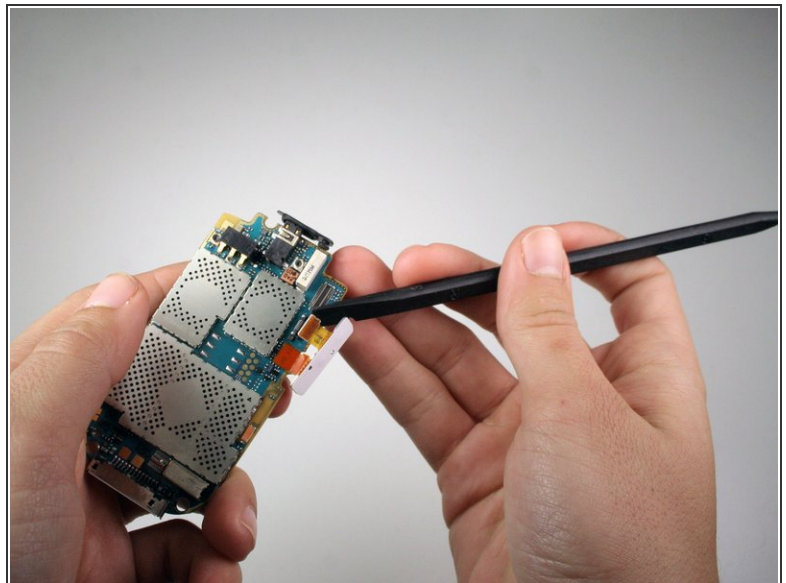
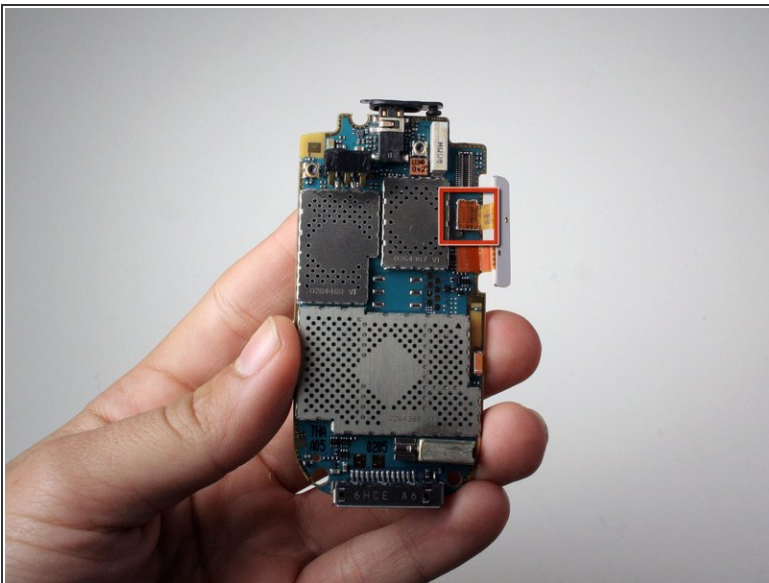
- Use the spudger to lift off the yellow clip near the top right corner of the motherboard.

Step 9



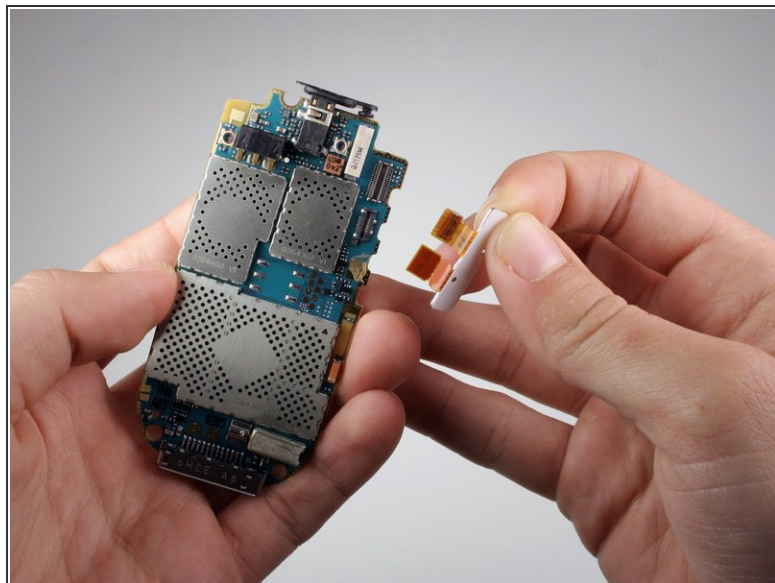
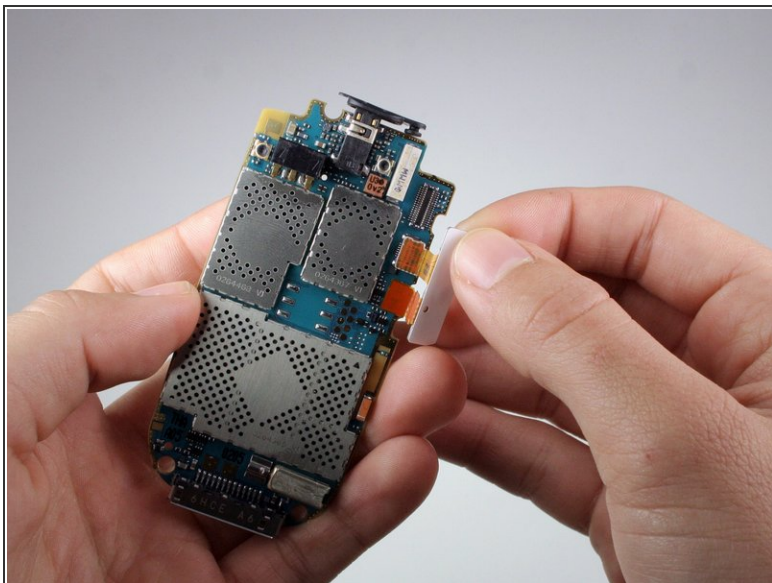
- ❗ Rotate the phone counterclockwise so that the edge is facing you.
- Use the spudger to lift the motherboard out of the base of the phone.
- Remove the motherboard from the base of the phone.

Step 10 — Side Buttons



- Use the spudger to pull off the top orange chip attached to the white tab.

Step 11



- Lightly pull up on the white tab to remove the orange tab from the logic board.
- ⓘ Don't worry about the glue on the bottom orange tab. It's only there to keep the side button in place.

To reassemble your device, follow these instructions in reverse order.