



Disassembling Nokia Classic 2600c-2b Phone

Complete disassembly of phone

Written By: Ian VanZandt

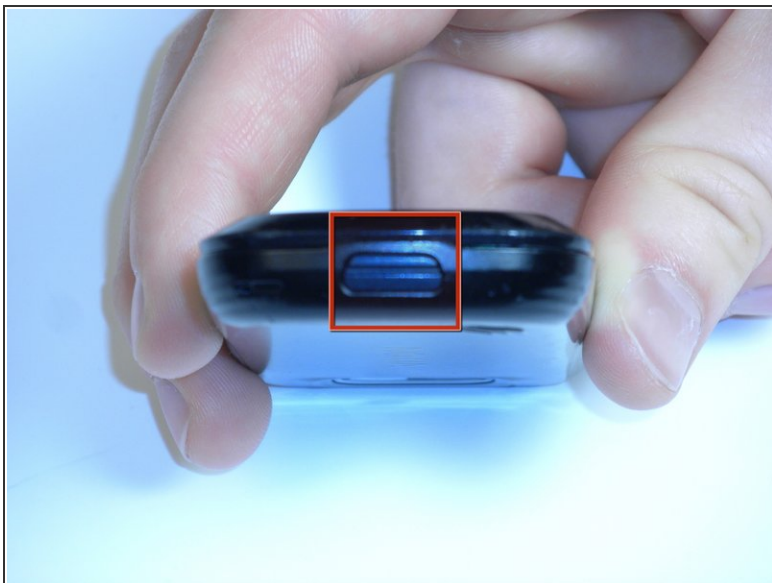




TOOLS:

- [iFixit Opening Tools](#) (1)
 - [T5 Torx Screwdriver](#) (1)
-

Step 1 — Phone



- Press down on the button located at the bottom of the phone, using the center ridge as a guide.
- Pull the phone apart from the bottom, keeping the button pressed down.

 **CAUTION!** The plastic opening tool may be used to gain leverage. Some force is required to open.

Step 2



- Remove the back cover to expose the battery.

Step 3




- Place a finger or plastic opening tool in the gap between the battery and the phone.
- Gently lift the battery out.

Step 4



- Locate the plastic latches on the left and right sides of the phone.
- Insert the plastic opening tool or a fingernail into each latch and pry them open individually.

 **CAUTION!** Some force is required.

Step 5



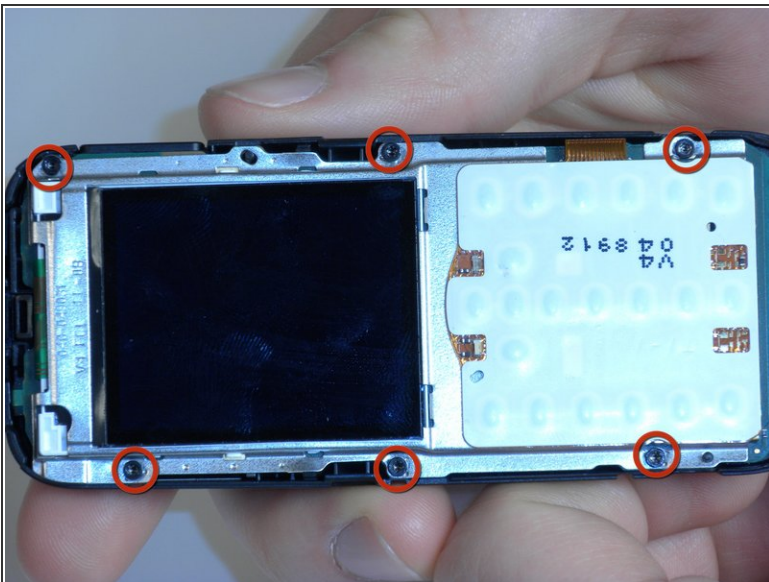
- Remove the faceplate with the number pad attached.

Step 6



- Turn the faceplate so the number pad faces downward.
- Lift the number pad out of the faceplate.

Step 7



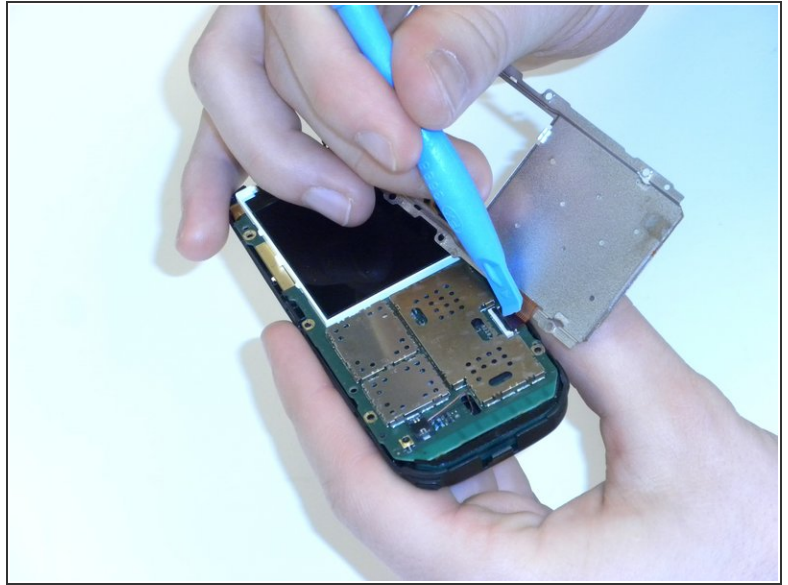
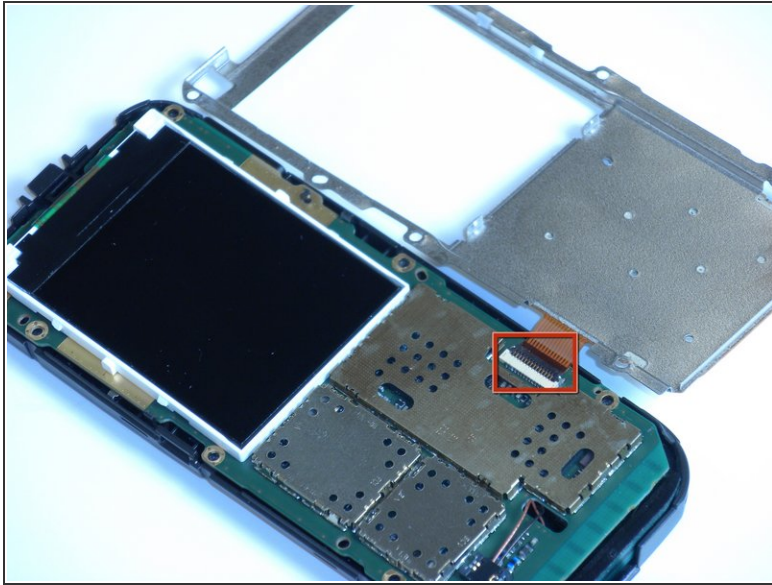
- Locate the six screws positions along the edges of the motherboard.
- Unscrew the six screws using the Torx 5 screwdriver (see Introduction for description of a Torx 5 screwdriver).



CAUTION! Place the screws in a secure location.

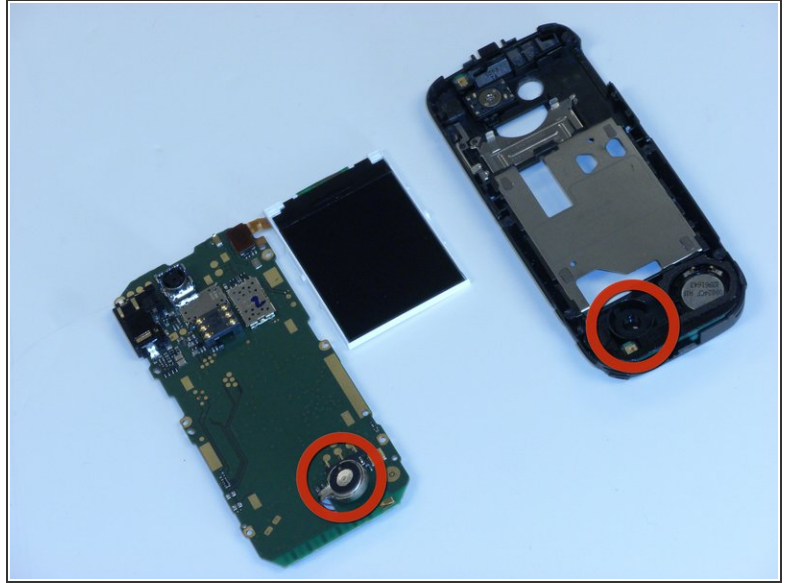
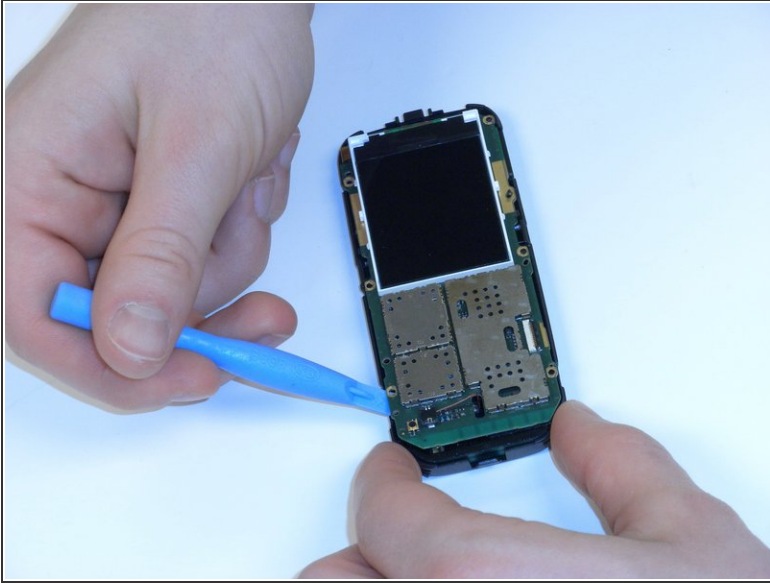
This document was generated on 2019-10-06 11:59:27 AM (MST).

Step 8



- Locate the orange ribbon tape connecting the metal display plate to the motherboard.
- Lift the black latch attaching the tape to the motherboard.
- Gently pull the tape out of the latch slot to remove the metal display.

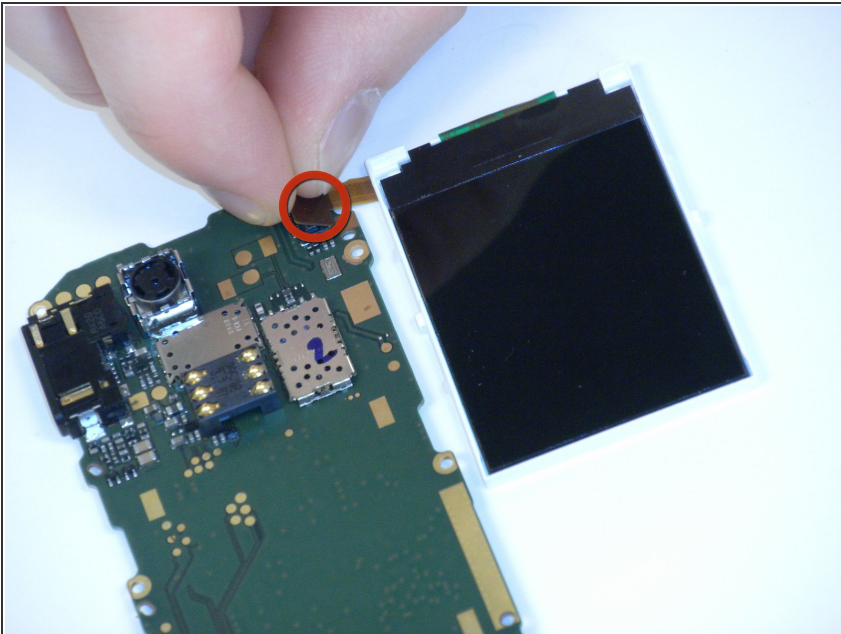
Step 9



- Using the plastic opening tool, gently pry off the motherboard from the plastic shell.

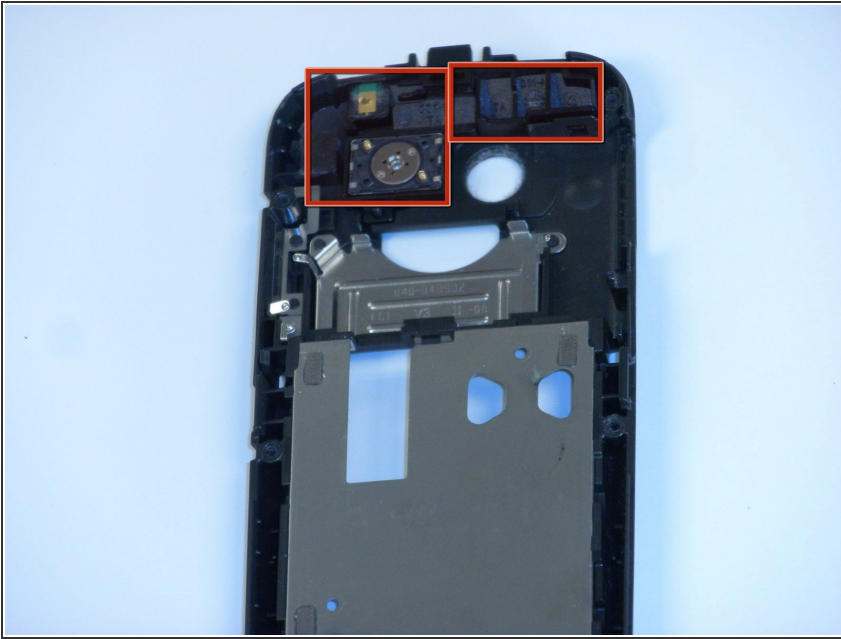
⚠ CAUTION! When pulling the motherboard out, be careful not to damage the battery under the lower left hand corner of the motherboard.

Step 10



- Turn the motherboard over and locate the orange ribbon tape connecting the display to the motherboard.
- Gently pull the tape up to remove the display.

Step 11



- Locate the camera component in the plastic shell removed from underneath the motherboard (It is one piece).
- Gently pull out the camera component using either a finger or plastic opening tool.

To reassemble your device, follow these instructions in reverse order.