



Disassembling Olympus FE-170 Casing

This procedure will direct the removal of the front and back panel of the camera. It requires a #0 phillips screwdriver and a plastic opening tool.

Written By: CCrane

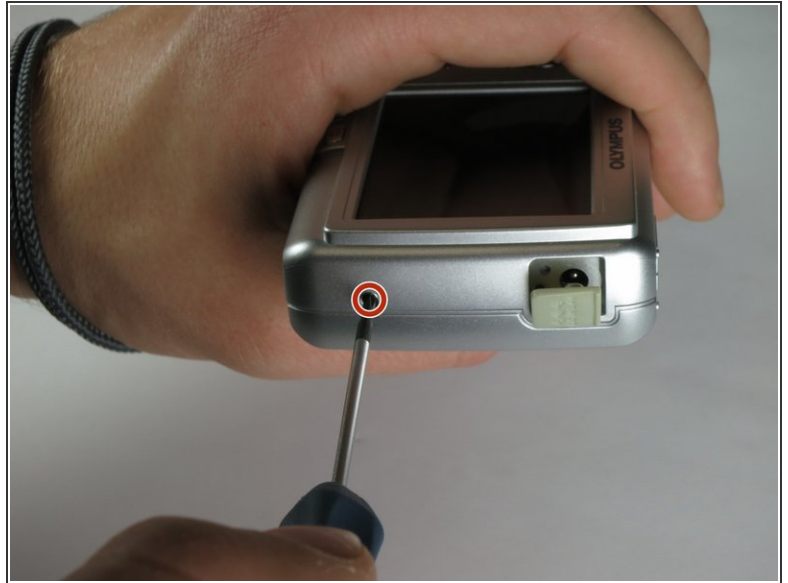




TOOLS:

- [Phillips #00 Screwdriver](#) (1)
- [iFixit Opening Tools](#) (1)

Step 1 — Casing



- Remove the 2 exposed screws on opposite sides of the camera. Turn the screws counter-clockwise to remove.

Step 2



- Open the battery compartment and remove the 2 screws in the top of the opening.

Step 3



- Remove the 2 exposed screws on the bottom of the camera.

Step 4



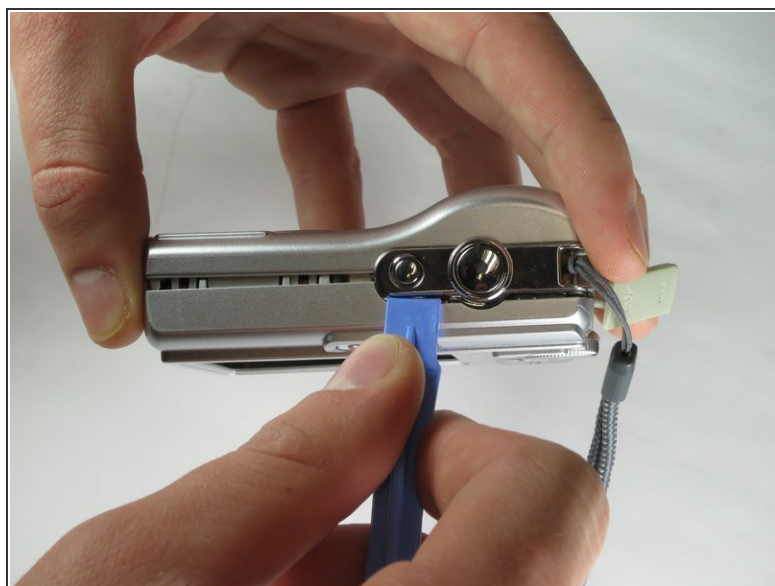
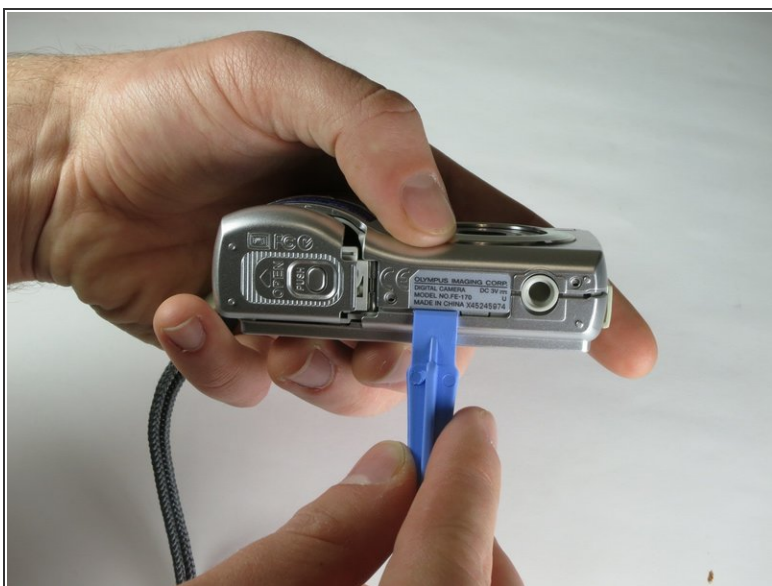
- Uncover the mini-usb dock on the side of the camera and unscrew the screw next to the flap joint

Step 5



- Uncover the video cable port on the side of the camera and remove the screw

Step 6



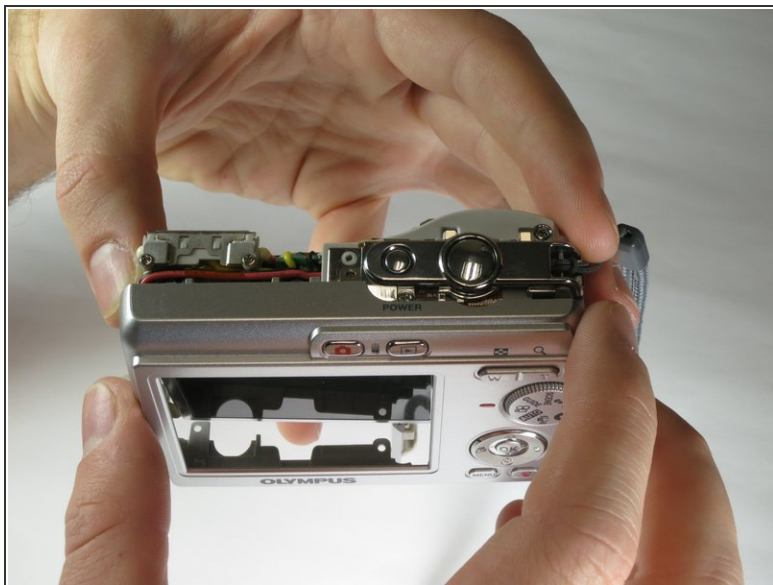
- Carefully slip the head of the plastic opening tool under the panels by finding the crack between the panels. Lightly apply pressure in the shown places at the top and bottom of the camera.

Step 7



- Loosen the panels on the sides of the camera in the shown places by slipping the plastic opening tool in the crack between the panels. Lightly apply pressure.

Step 8



- Ensure that the panels have been loosened. Carefully use hands to pull back and remove the panels.

To reassemble your device, follow these instructions in reverse order.