



Disassembling Olympus Pen E-PL7

This disassembly guide will show you the inner working of the Olympus Pen E-PL7.

Written By: Kelsea Weber



INTRODUCTION

This guide gives you a look at the major components of the Olympus Pen E-PL7 and provides complete disassembly instructions.

We highly suggest you use a [magnetic project mat](#) or an [organization tray](#). This camera has **many** different types of screws and keeping them organized is key to proper reassembly.




TOOLS:

- [Magnetic Project Mat](#) (1)
 - [Phillips #00 Screwdriver](#) (1)
 - [iFixit Opening Tools](#) (1)
 - [Spudger](#) (1)
 - [Tweezers](#) (1)
-

Step 1 — Battery



- Turn the camera upside down.
 - Push the grey tab to the right to open the battery compartment.
 - Pull out the battery.
-  The battery is not shown in these photos.

Step 2 — Back Case



- Use a Phillips #00 screwdriver to remove the six 2 mm screws on the bottom of the camera.

Step 3



- Remove the two 4 mm **reverse threaded** Phillips screws from the bottom of the camera.
- ⓘ Reverse threaded screws tighten counter clockwise and loosen clockwise.

Step 4



- Remove the two 4 mm Phillips screws under the HDMI port cover.

Step 5



- Use a Phillips #00 screwdriver to remove the 5 mm screw near the left hand grip.

Step 6



- Use a Phillips #00 screwdriver to remove the 5 mm screw near the right hand grip.

Step 7



- Flip open the LCD.
- Use a Phillips #00 screwdriver to remove the 2 mm screw beneath the LCD assembly.

Step 8



- Use a Phillips #00 screwdriver to remove the four 6.3 mm screws from the lens mount.

Step 9



- Remove the lens mount with tweezers.

Step 10



- Use tweezers to remove the inner metal ring.

Step 11



- Use tweezers to remove the two springs lying beneath the inner metal ring.

Step 12



- Use a Phillips #00 screwdriver to remove the three 5 mm screws.

Step 13



- Remove the two 4 mm Phillips screws.

Step 14



- Press and hold the lens release button while using tweezers to remove the lens hook.
- Use tweezers to remove the spring underneath the lens hook.

Step 15



- Use tweezers to remove the metal clip from the external flash mount.

Step 16



- Use a Phillips #00 screwdriver to remove the four 4 mm screws from the external flash port.

Step 17



- Remove the second external flash clip with tweezers.

Step 18



- Remove the external flash port casing to expose five more screws.

Step 19



- Use a Phillips #00 screwdriver to remove the two 6.4 mm screws.
- Remove the 2 mm Phillips screw.

Step 20



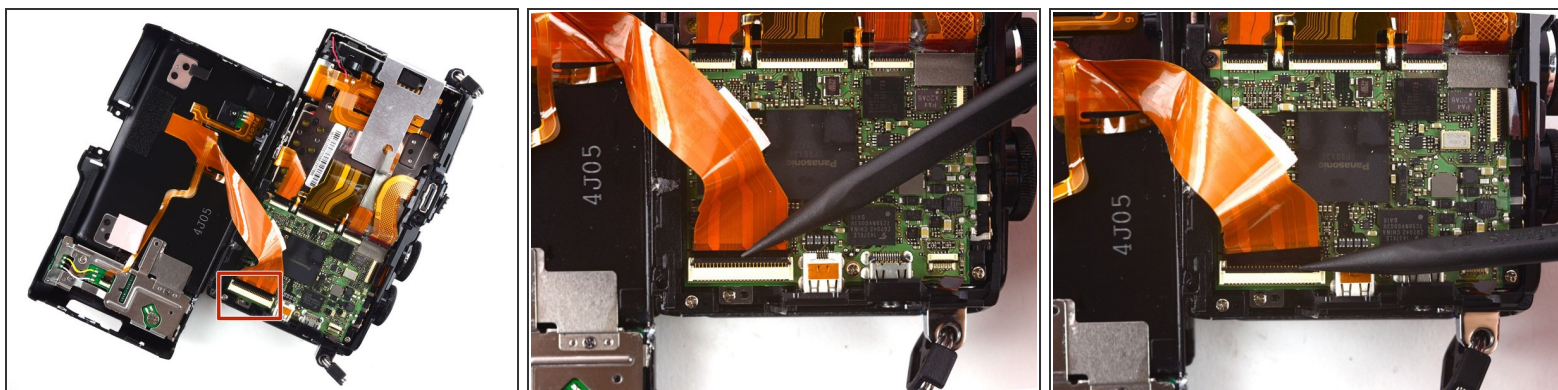
- Remove the two 3.8 mm Phillips screws from the sides of the external flash connector.

Step 21



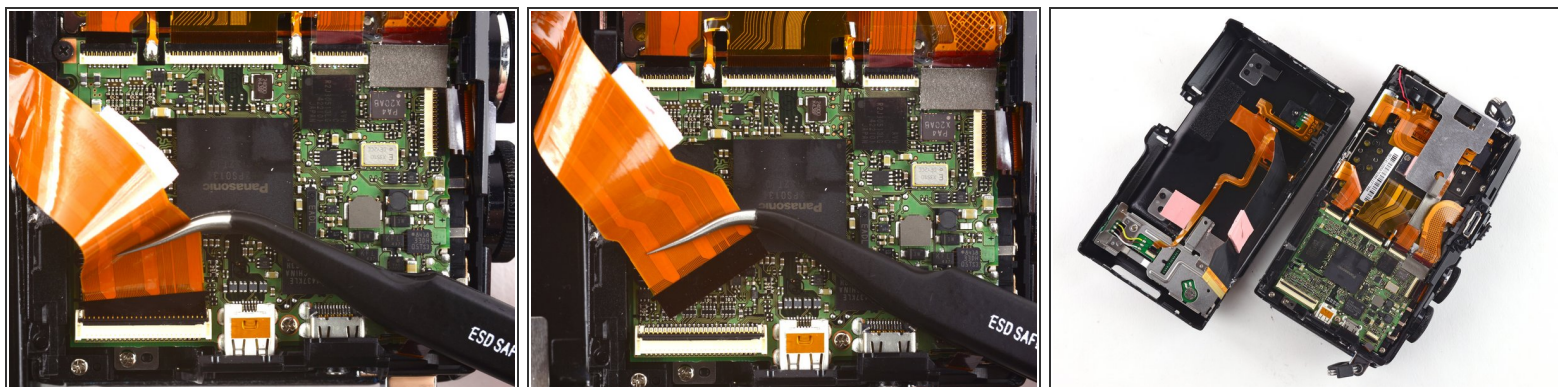
- Gently pull the back case away from the camera.
- ⚠ Do not attempt to remove the back case, as it is attached to the camera by a ribbon cable.

Step 22



- To remove the ribbon holding the back case to the camera, use the pointed end of a spudger to flip back the top bar on top of the ZIF connector.

Step 23



- Use tweezers to pull the ribbon out of the connector.
- Remove the back case.

Step 24 — Disassembling Olympus Pen E-PL7



- Use a Phillips #00 screwdriver to remove the two 1.6 mm screws near the left hand grip.

Step 25



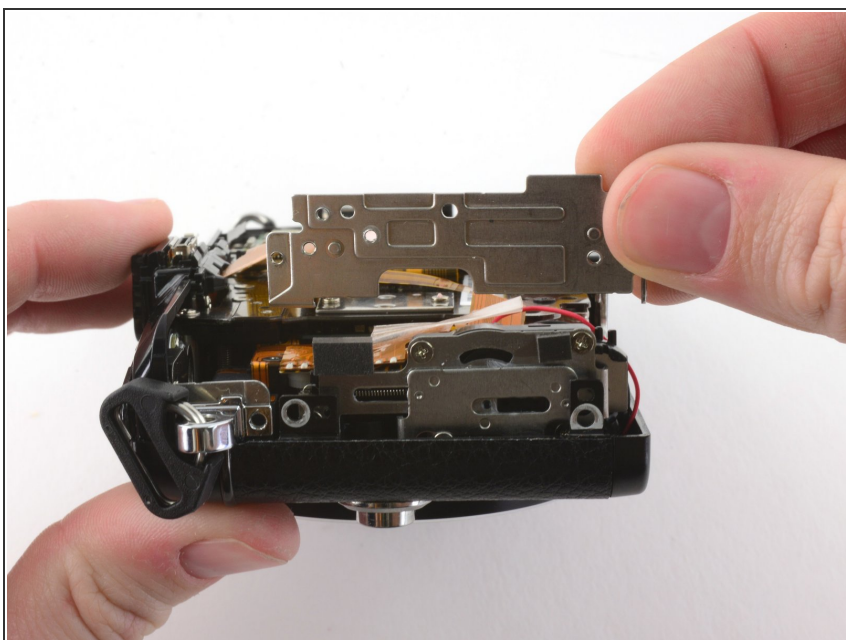
- Once the screws are removed, use two fingers to remove the metal clip.

Step 26



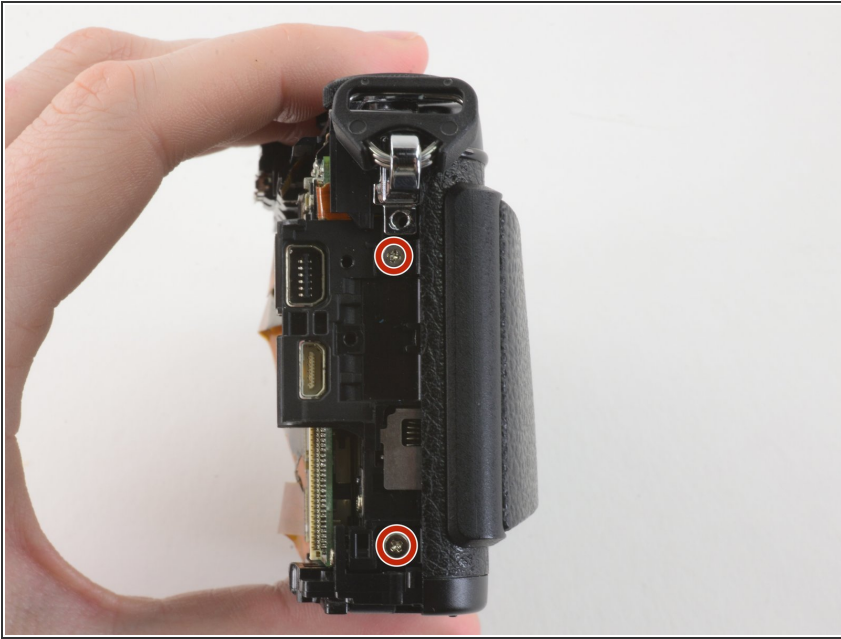
- Remove the 2.2 mm Phillips screw near the left hand grip, holding a second metal plate in place.
- Remove the 1.8mm Phillips screw.

Step 27



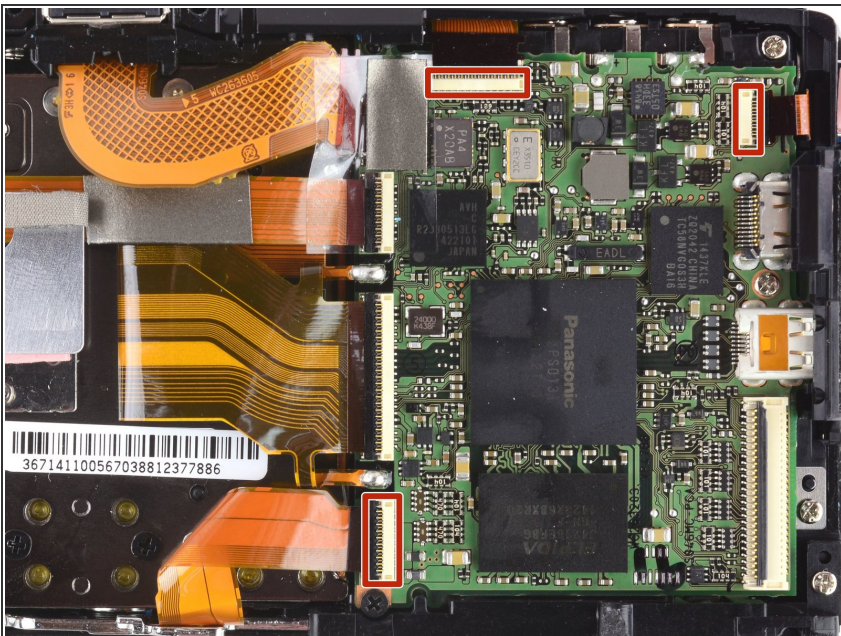
- Once the screws are removed, use two fingers to remove the metal plate.

Step 28



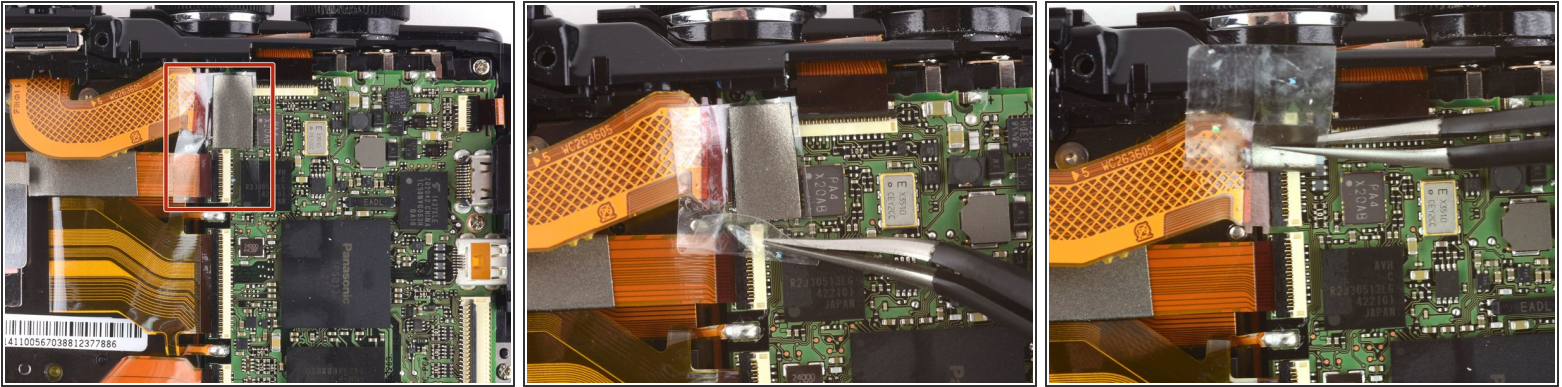
- Remove the two 4.1 mm Phillips screws near the right hand grip.

Step 29



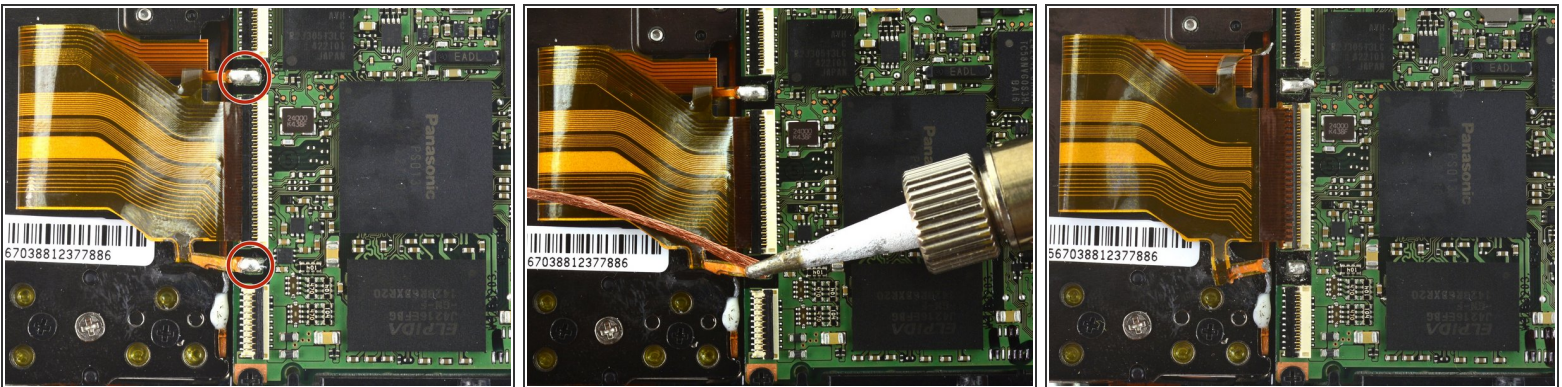
- Use a spudger to remove the three indicated ribbon cables from their ZIF connectors on the motherboard.

Step 30



- Use tweezers to remove the plastic cover from the two ZIF connectors in the upper left corner of the motherboard.
- Disconnect both ribbon cables.

Step 31



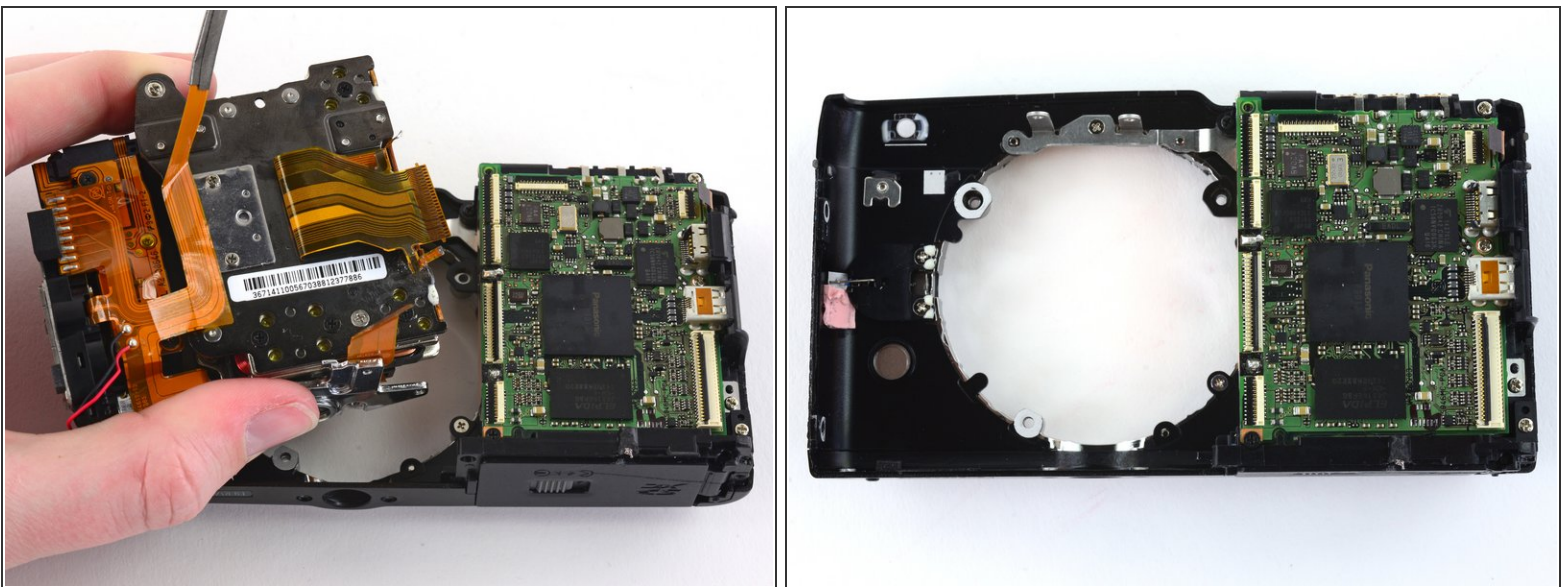
- Desolder the large ribbon cable from the motherboard at the solder points on either side of its ZIF connector
- Learn more about soldering with iFixit's [Soldering Technique Guide](#).

Step 32



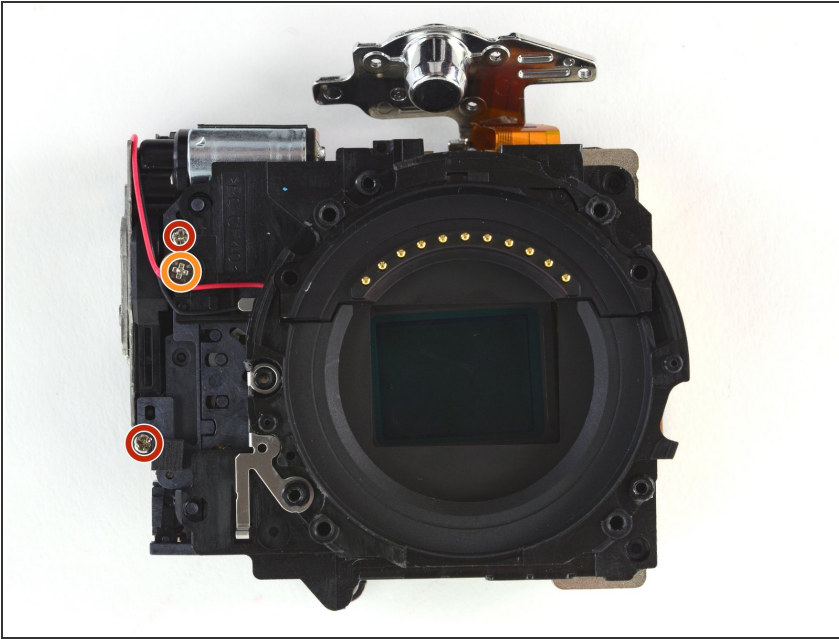
- Remove the 5.2 mm Phillips screw from the top of the right hand grip.
- Remove the top plate.

Step 33



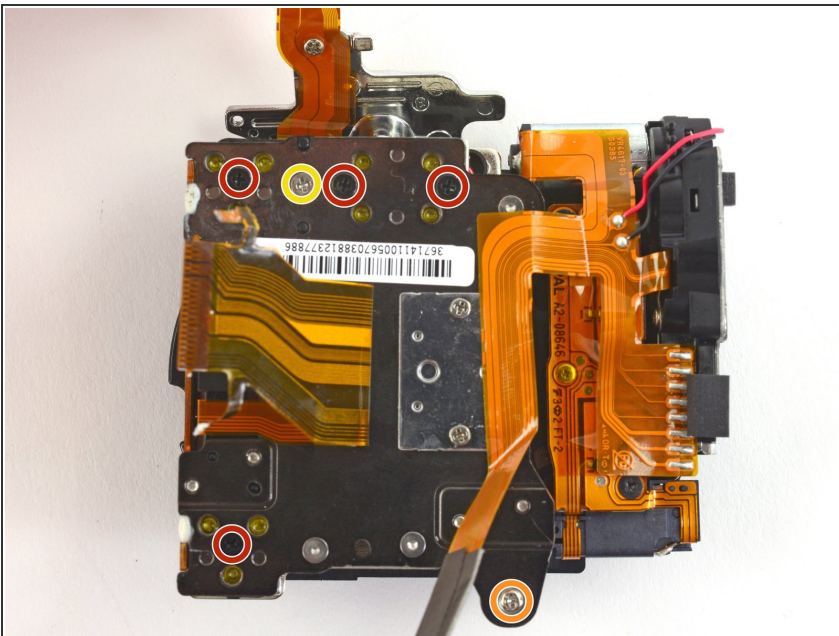
- Remove the sensor assembly from the front case.

Step 34



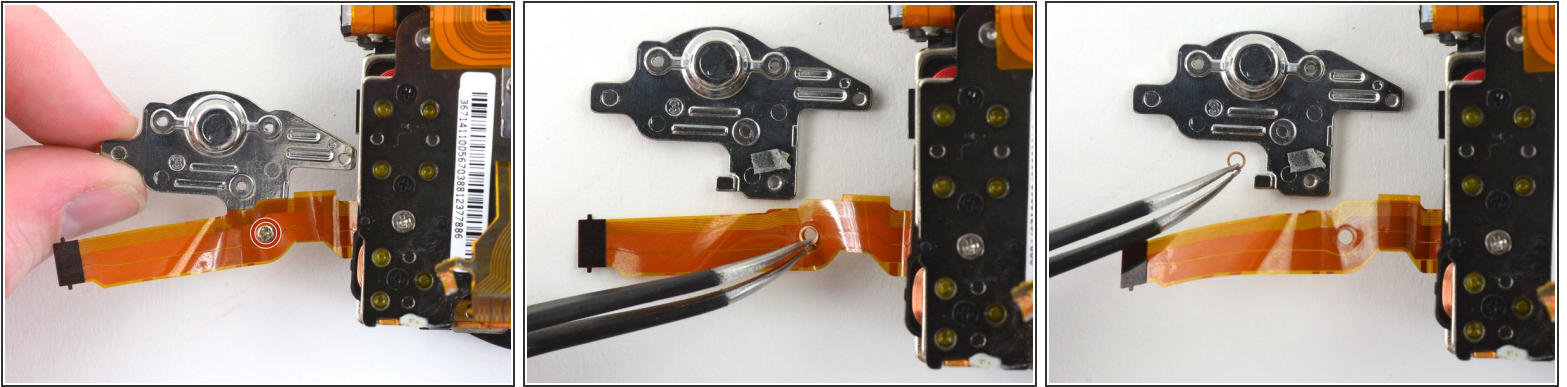
- Remove the two 4.3 mm screws from the front of the sensor assembly.
- Remove the 6.8 mm screw.

Step 35



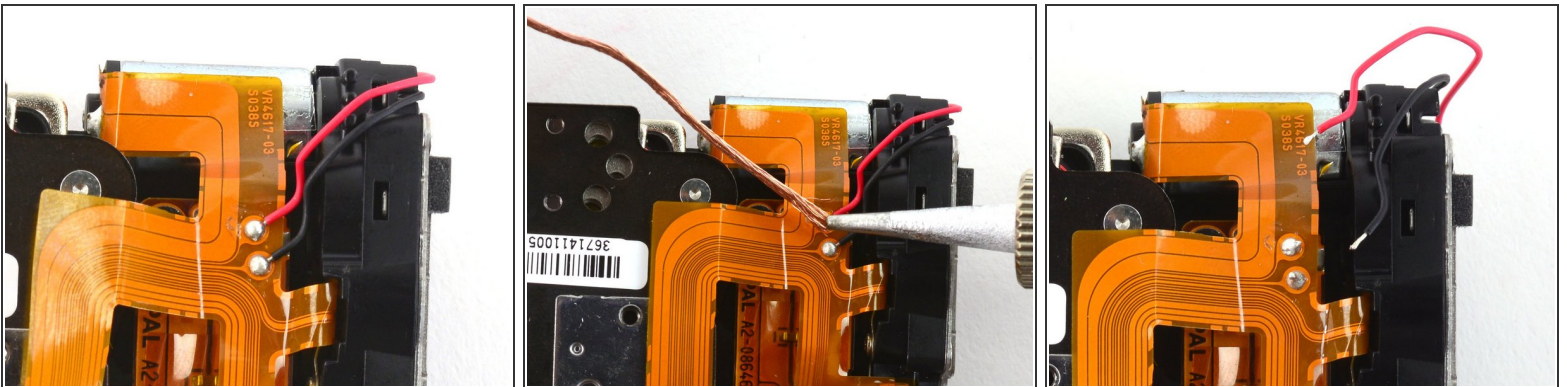
- Remove the four 1.9mm Phillips screws from the back of the sensor assembly.
- Remove the 14.5mm Phillips screw.
- Remove the 3.3mm Phillips screw.

Step 36



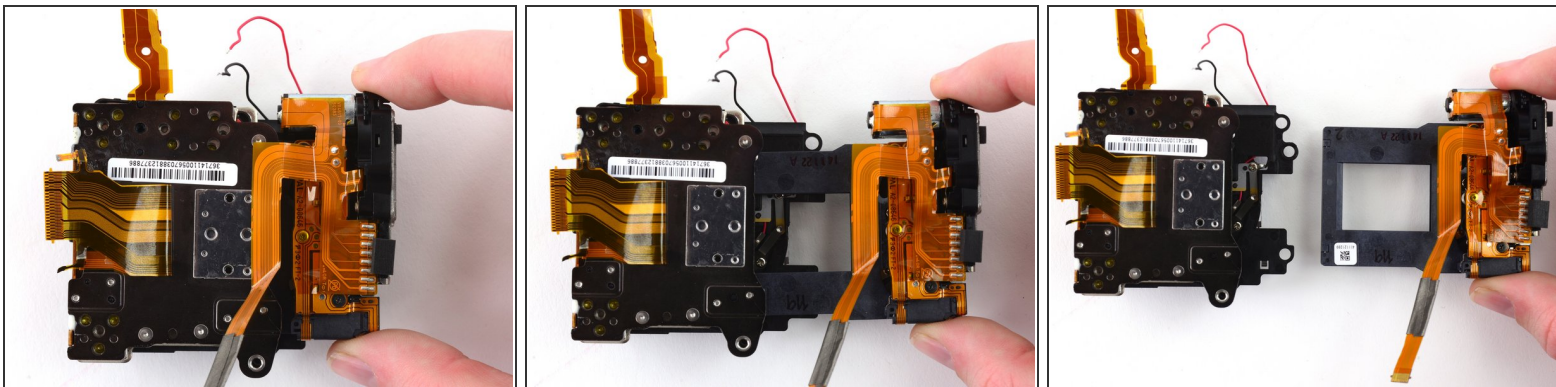
- Use a Phillips #00 screwdriver to remove the 1.7 mm screw securing the tripod mount to the ribbon cable.
- Use tweezers to remove the small copper ring underneath the screw.

Step 37



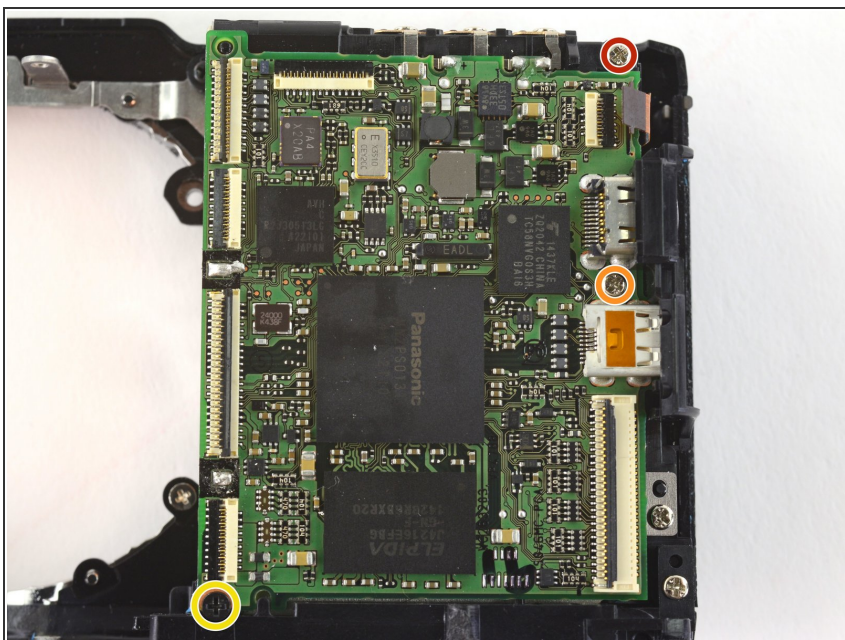
- Desolder the red and black wires from the back upper right corner of the sensor assembly.

Step 38



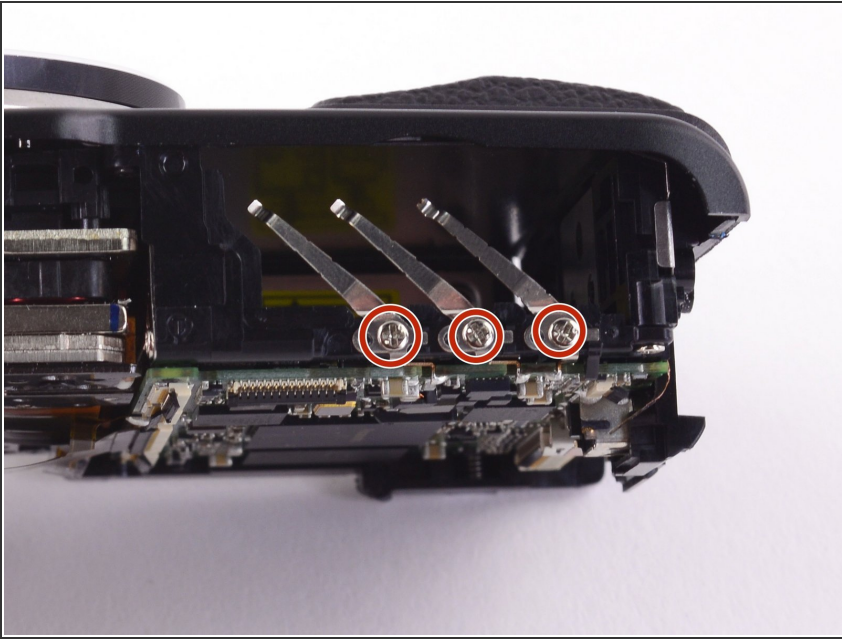
- Pull the sensor frame away from the sensor assembly.

Step 39



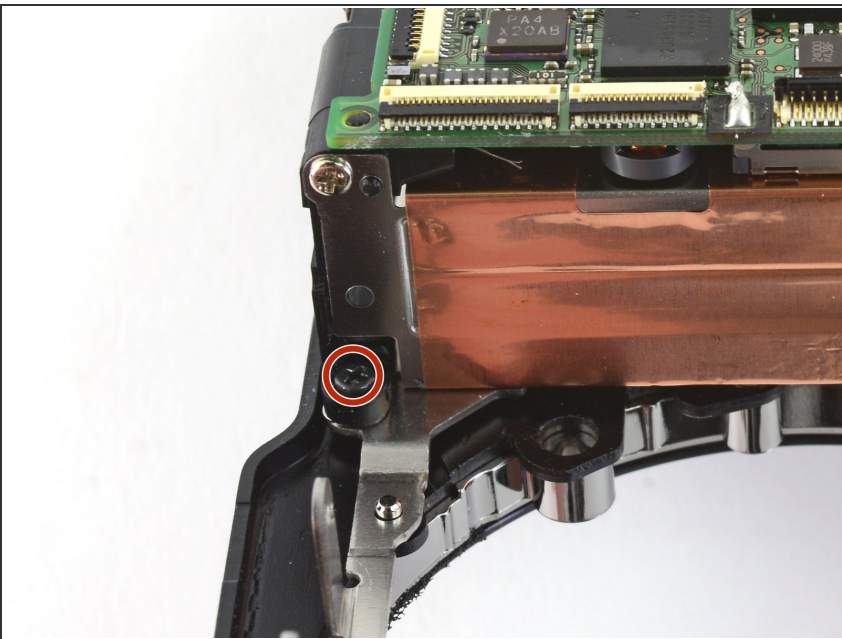
- Remove the 4.4 mm Phillips screw securing the motherboard to the battery compartment.
- Remove the 3.8 mm Phillips screw.
- Remove the 3.7mm Phillips screw.

Step 40



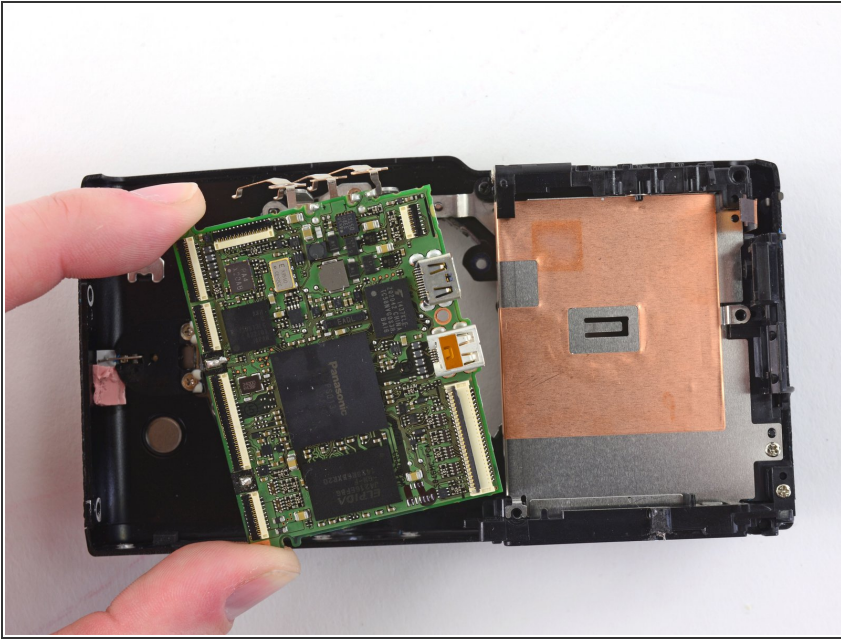
- Remove the three 3.3 mm Phillips screws at the top of the motherboard.

Step 41



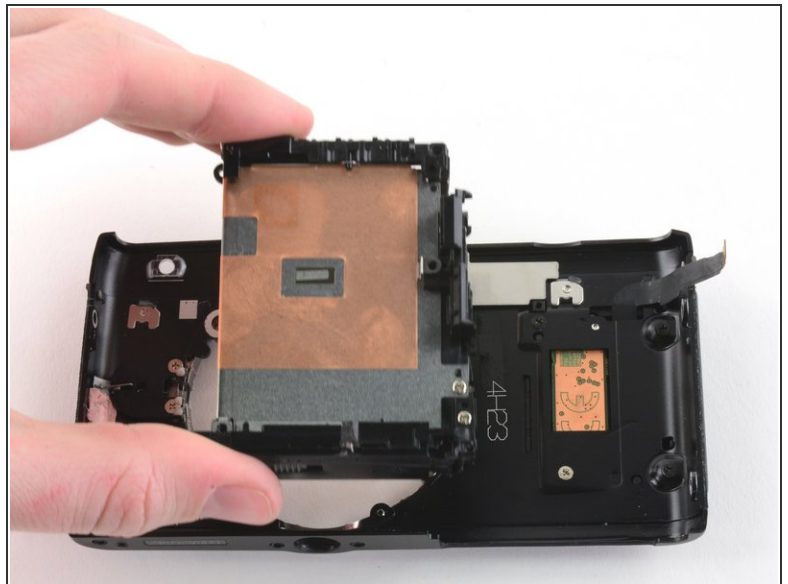
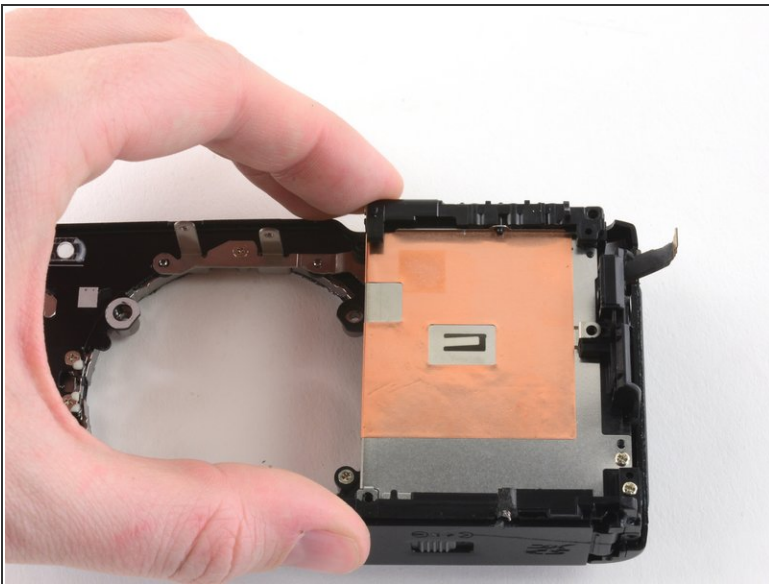
- Remove the 3.4 mm Phillips screw from the left side of the motherboard.

Step 42



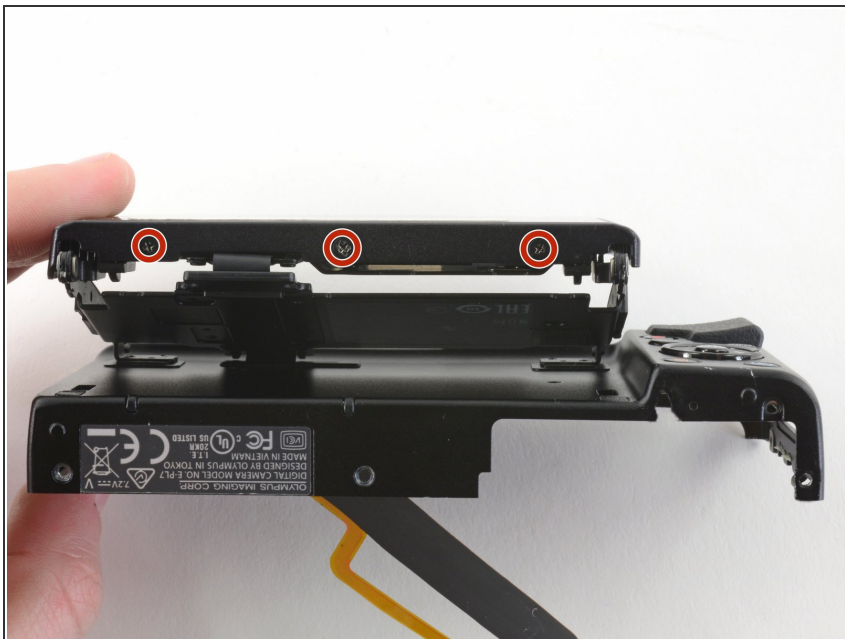
- Remove the motherboard.

Step 43



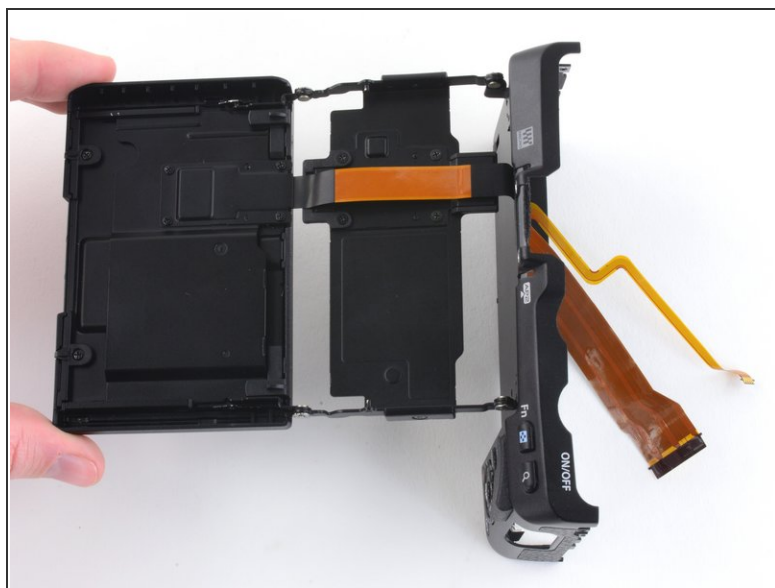
- Remove the battery compartment by hand.

Step 44



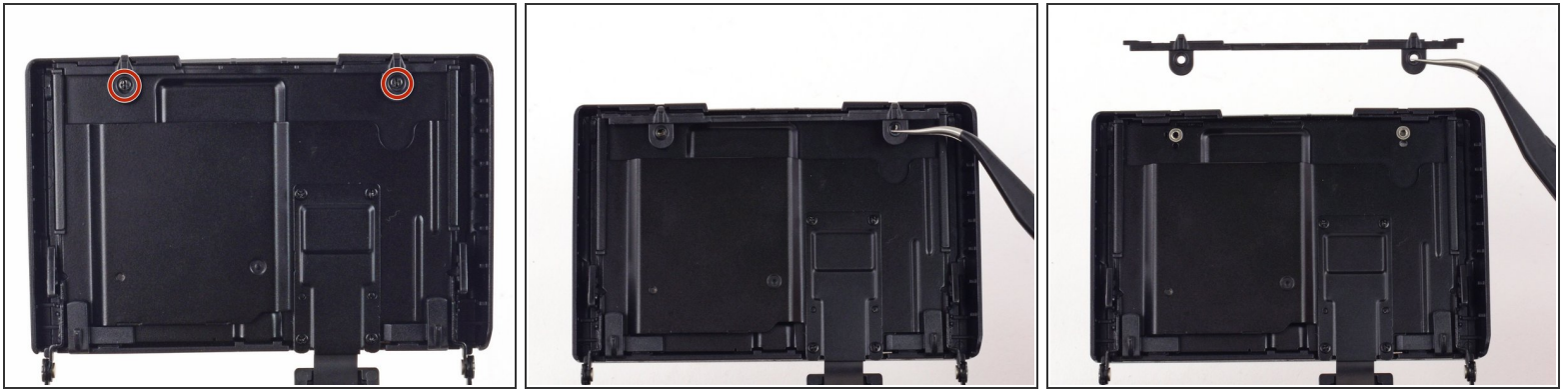
- Use a Phillips #00 screwdriver to remove the three 2.3 mm screws from the base of the LCD screen.

Step 45



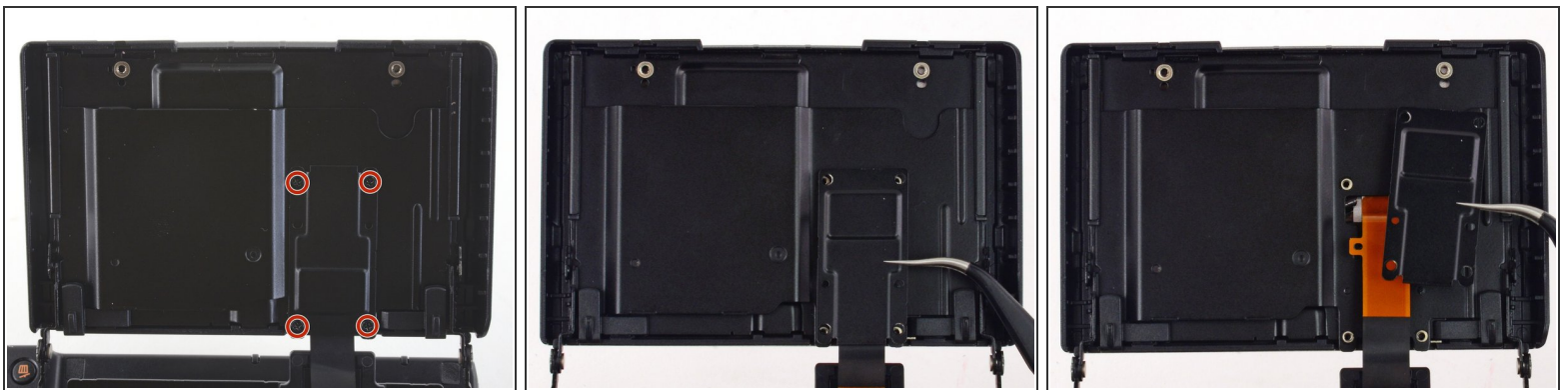
- Fully extend the LCD.

Step 46



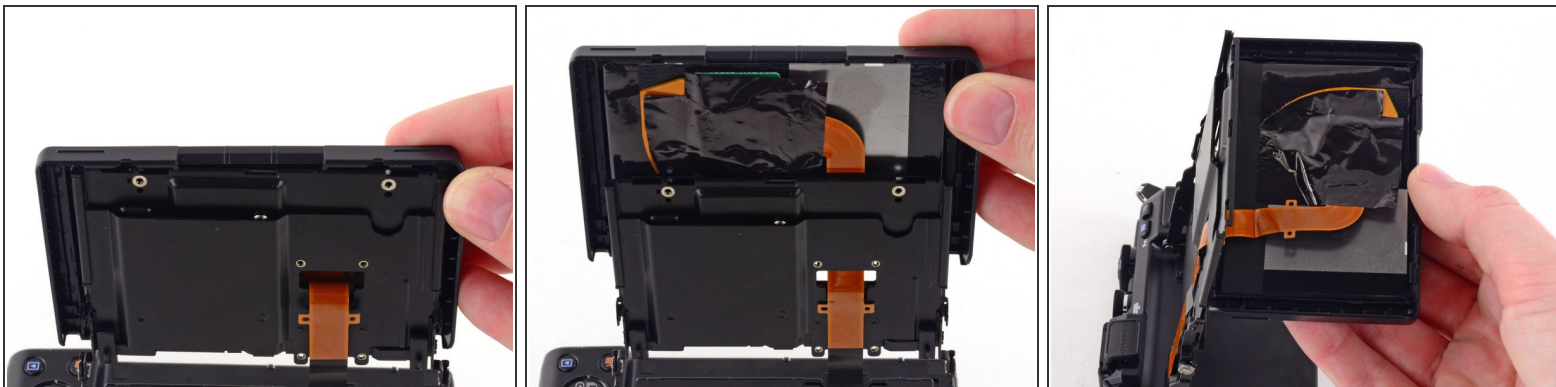
- Remove the two 2.2 mm Phillips screws located on the back of the LCD screen.
- Use tweezers to remove the top bracket.

Step 47




- Use a Phillips #00 screwdriver to remove the four 1.4 mm screws from the back of the LCD screen.
- Remove the LCD ribbon cable with a pair of tweezers.
- ⓘ The cover may simply fall off after the screws have been removed.

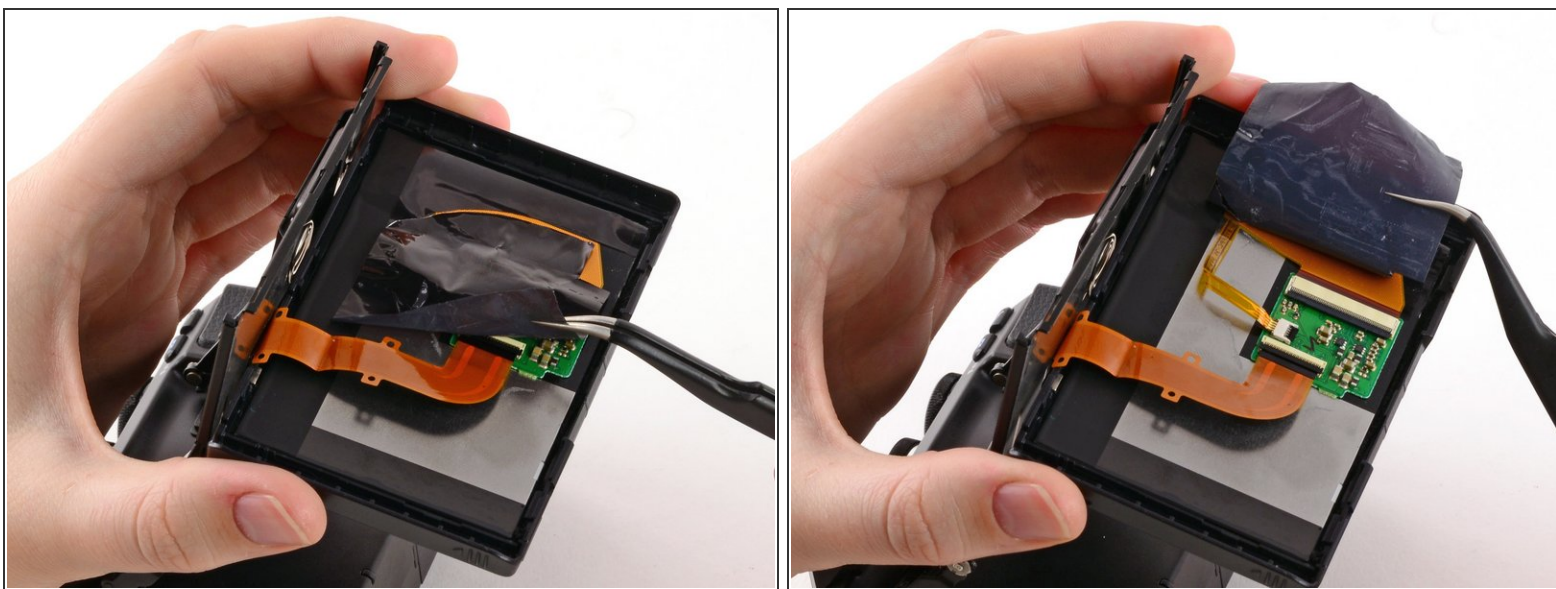
Step 48



- Carefully lift the LCD screen up and away from the assembly.

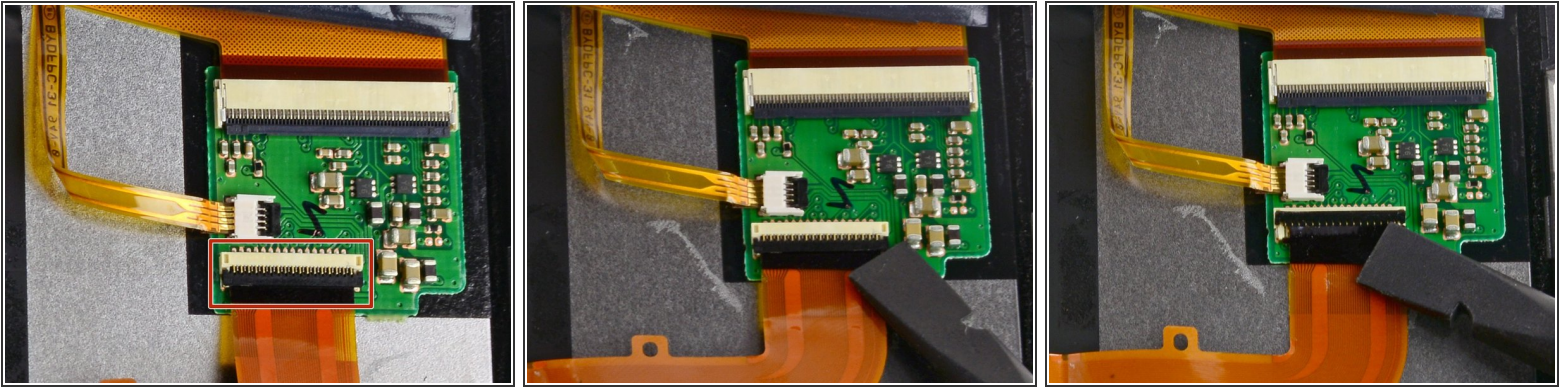
 Do not attempt to fully remove the screen, as it is attached to the assembly by a ribbon cable.

Step 49



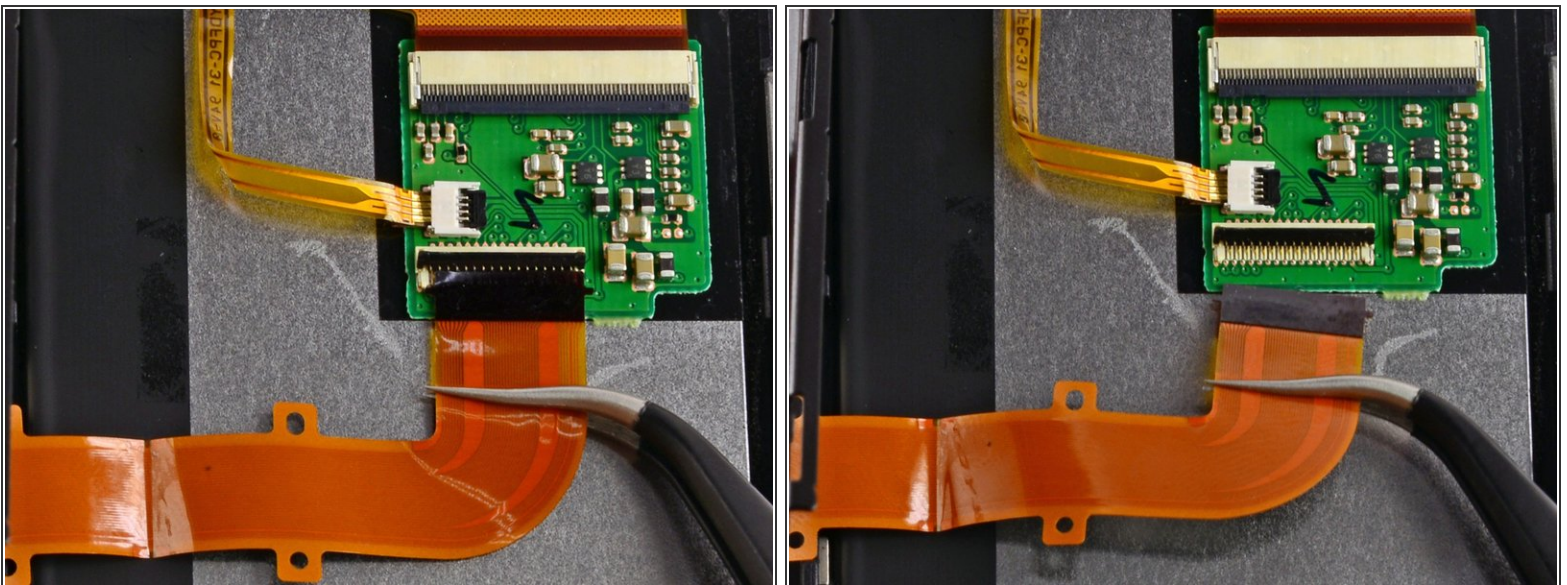
- Use tweezers to remove the plastic covering the LCD ribbon cable.

Step 50



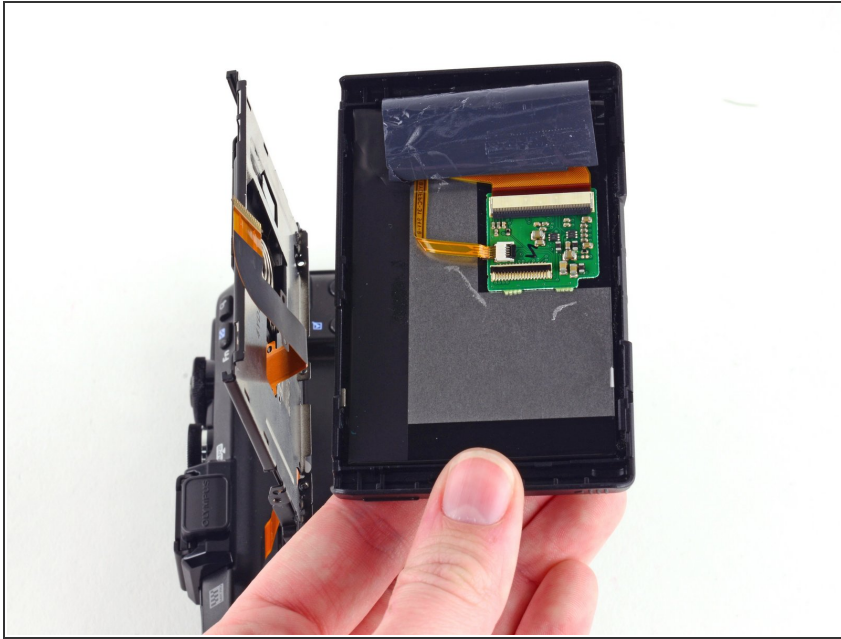
- Use the flat end of a spudger to flip back the black bar on the ZIF connector.

Step 51



- Gently pull the ribbon cable out with tweezers.

Step 52



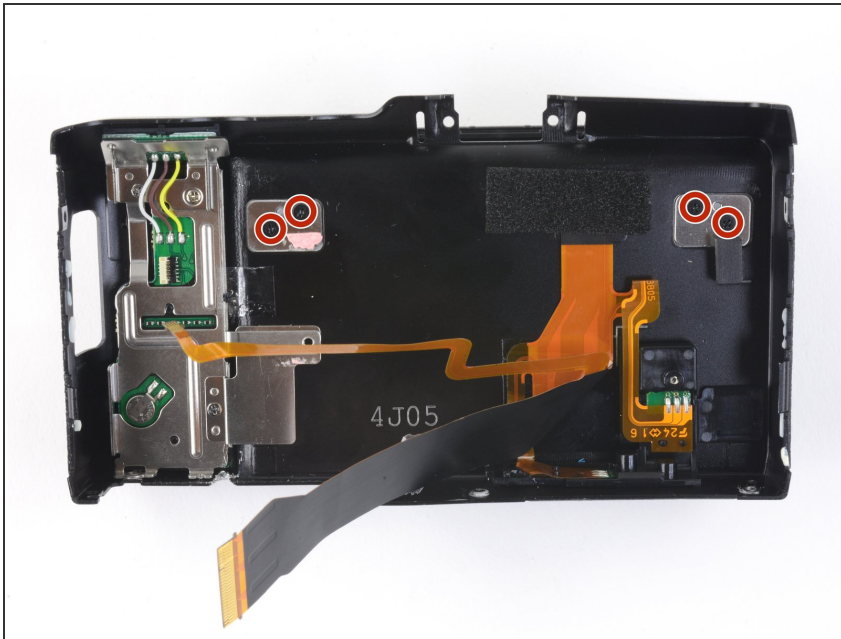
- Remove the LCD Screen.

Step 53



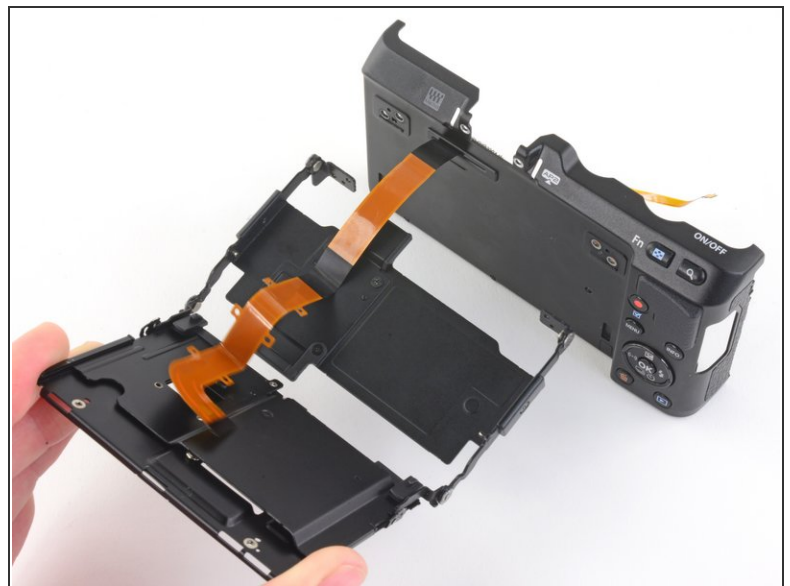
- Pull the ribbon cable through the hole in the LCD assembly.

Step 54



- Remove the four 2.4 mm Phillips screws from the inside of the back case.

Step 55



- Pull the LCD assembly away from the back case.

Step 56



- You have successfully disassembled the Olympus Pen E-PL7!

To reassemble your device, follow these instructions in reverse order.