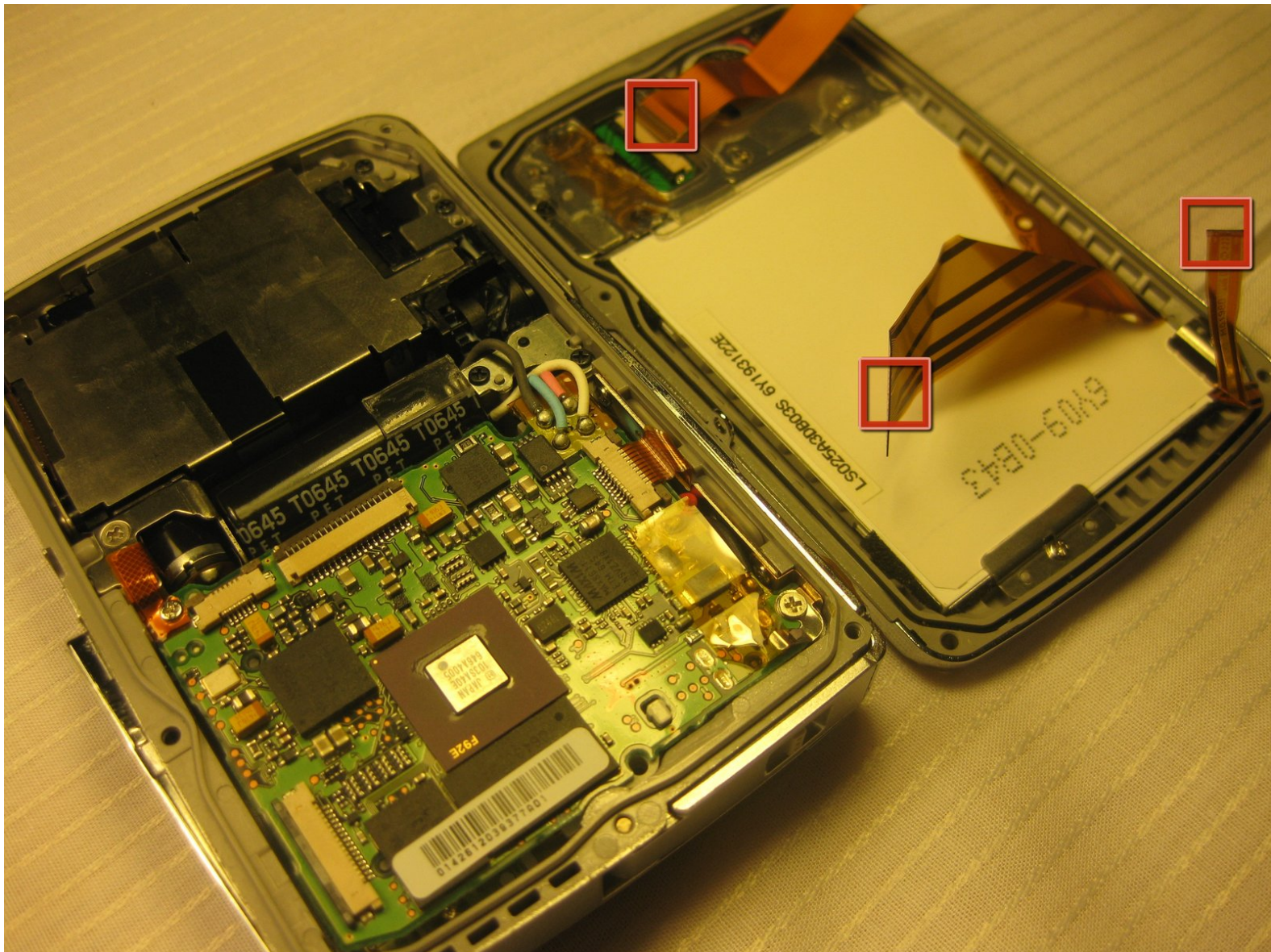




Disassembling Olympus Stylus 725 SW LCD Screen

Removing the LCD screen on the Olympus Stylus 725.

Written By: Bobby Hodges



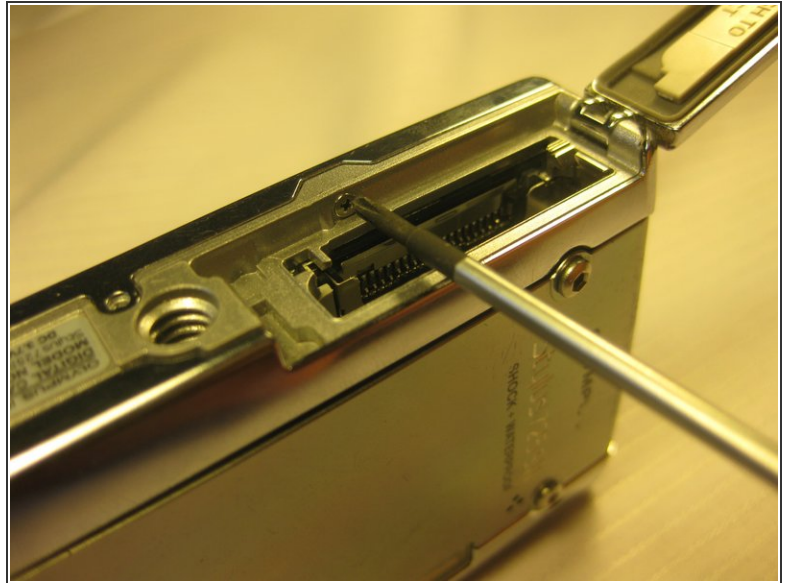
INTRODUCTION

This guide provides instructions for disassembling a broken LCD screen on the Olympus Stylus 725.

TOOLS:

- [Tweezers](#) (1)
Optional, but helpful
 - [Phillips #00 Screwdriver](#) (1)
-

Step 1 — Disassembling Olympus Stylus 725 SW Battery



i The battery is located on the bottom of the camera.

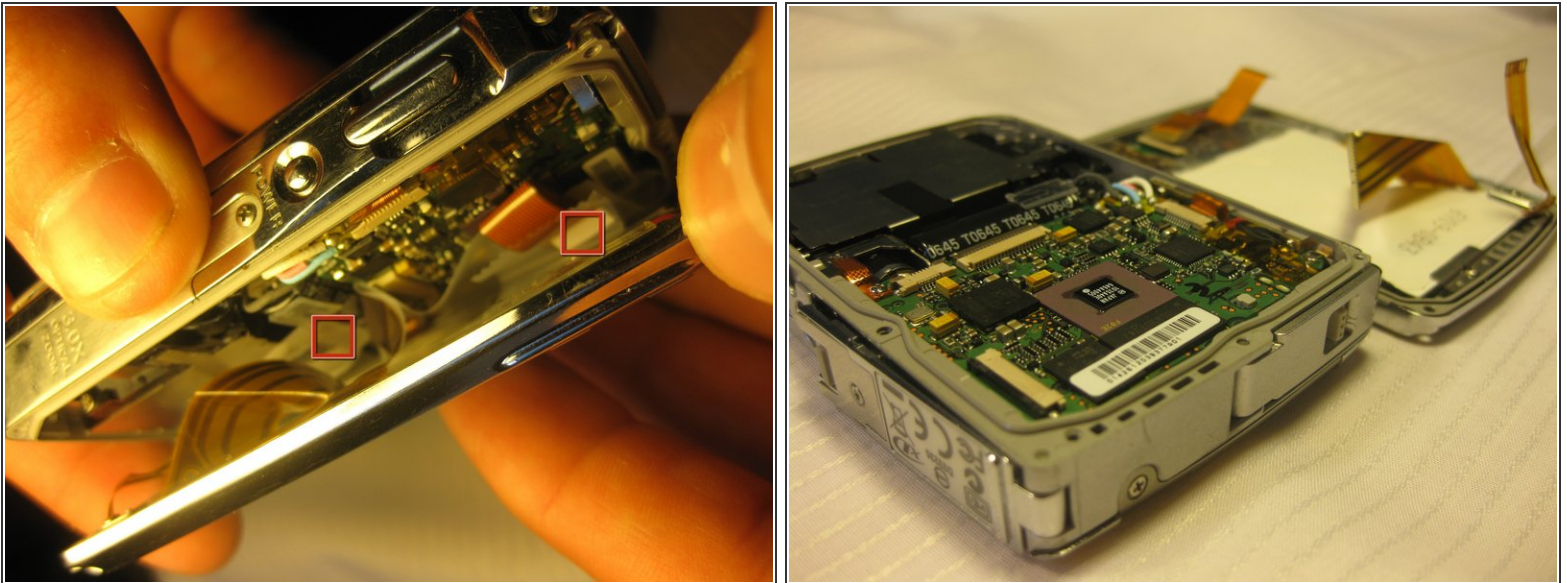
- Remove the battery by placing your thumb on the bottom flap and sliding the release button away from the side the lens is on. (The screwdriver is simply used as a reference point, no screws need to be removed)
 - Charge the battery for 60-90 minutes if your battery is dead.
- !** When installing a charged battery, align the battery appropriately, with the positive signs and negative signs lining up.

Step 2 — Back Panel



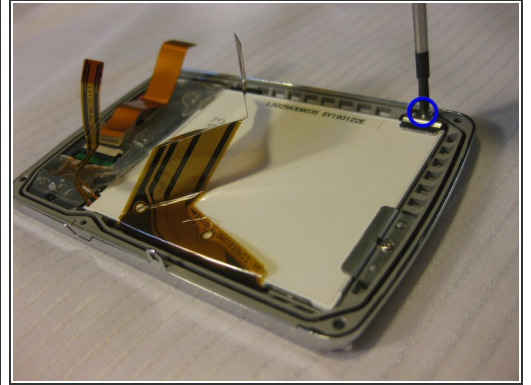
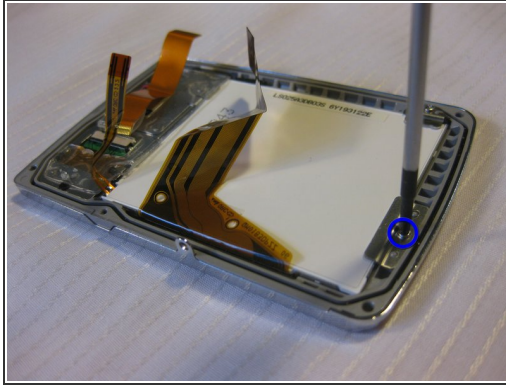
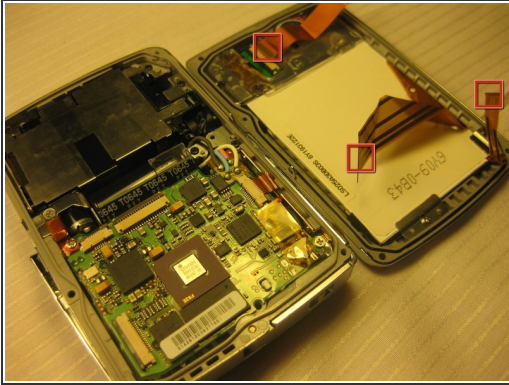
- Unscrew the 3mm long cover screws at the corners of the camera using a #00 Philips Screwdriver.
- Unscrew the 2mm long screws securing the sides of the camera which holds the back panel. Use the same screwdriver.

Step 3



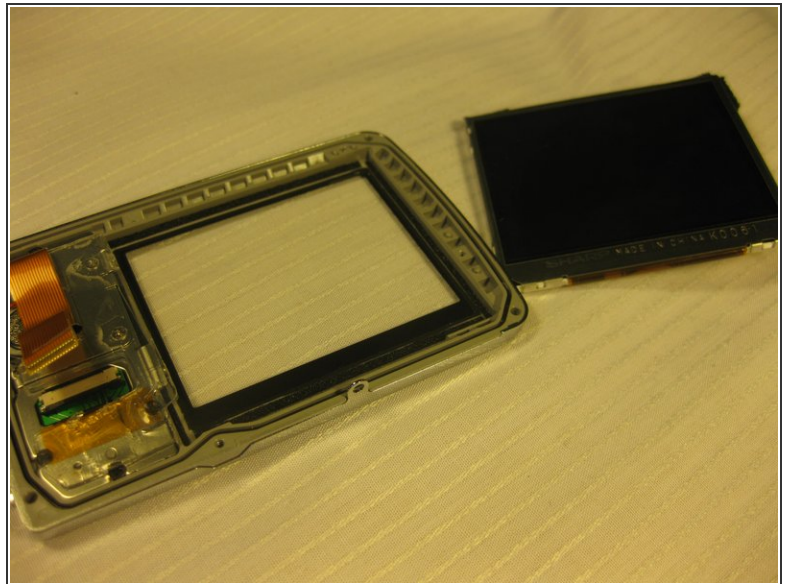
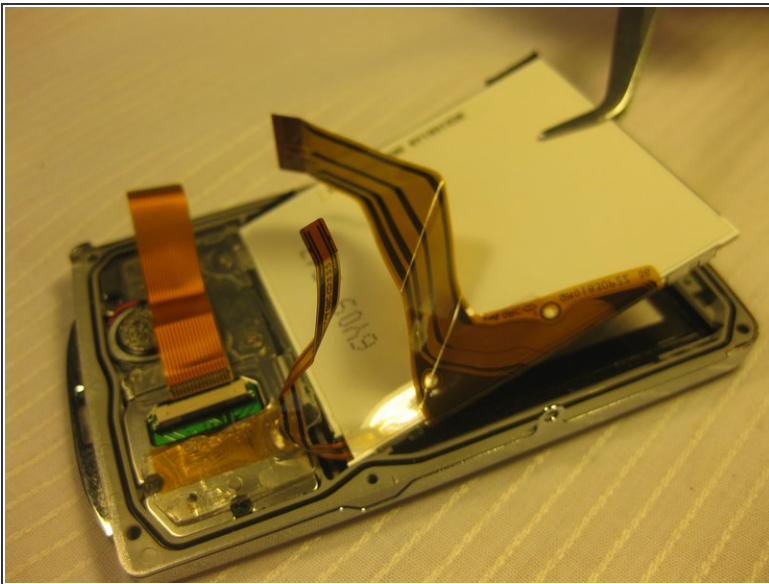
- ⚠ Be careful when removing the back cover, you will need to detach the connecting ribbons
- Detach the ribbons using your thumb, sliding them out of their slots.

Step 4 — Disassembling Olympus Stylus 725 SW LCD Screen



- Use a #00 Phillips head screwdriver to remove the screws in the back panel.
- After removing the back panel, slide the ribbons off the computer chip to detach them.

Step 5



- Use tweezers to remove the loosened LCD screen.
- ⚠ Be careful to not scratch the new LCD screen when replacing it.
- Carefully place the new screen in place of the old, making sure the label faces up.

Step 6



- Slide the ribbons back onto the computer chip.

Step 7



- Using the #00 Phillips head screwdriver from before, screw the screws in the back into the panel.

Be sure to test the device by turning it on once the screen has been replaced. Make sure that the new screen works properly.