



Disassembling Over-Ear Headphone

Sennheiser HD4199

This guide covers disassembly of the Sennheiser HD419 headphones for repair or replacement of the ear cushions or lead. The procedure is almost certainly the same for a number of visually similar Sennheiser headphones.

Written By: forevergoku



INTRODUCTION

By far the commonest fault with headphones is a broken lead. If the break is within the headphones themselves or at that end of the lead you will need to disassemble them in order to replace the lead or shorten it to eliminate the break.

TOOLS:

- [Pro Tech Toolkit](#) (1)
-

Step 1 — Disassembling Over-Ear Headphone Sennheiser HD4199



- Use two or three fingers slowly pull the cushion.

⚠ Caution: go gently and try not to apply too much force.

Step 2






- By feel, locate 4 screws under the foam, 2 each side.
- Scrap away just sufficient foam in order to be able to remove the screws, and remove them.

Step 3

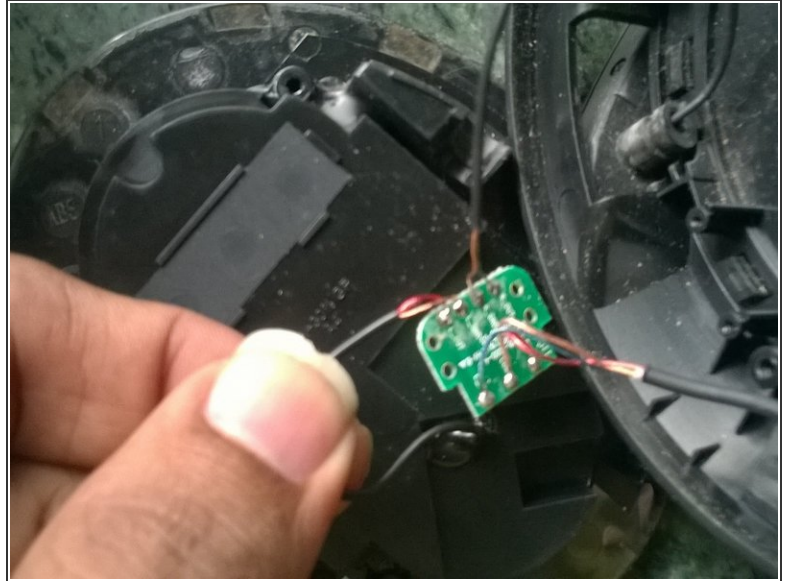
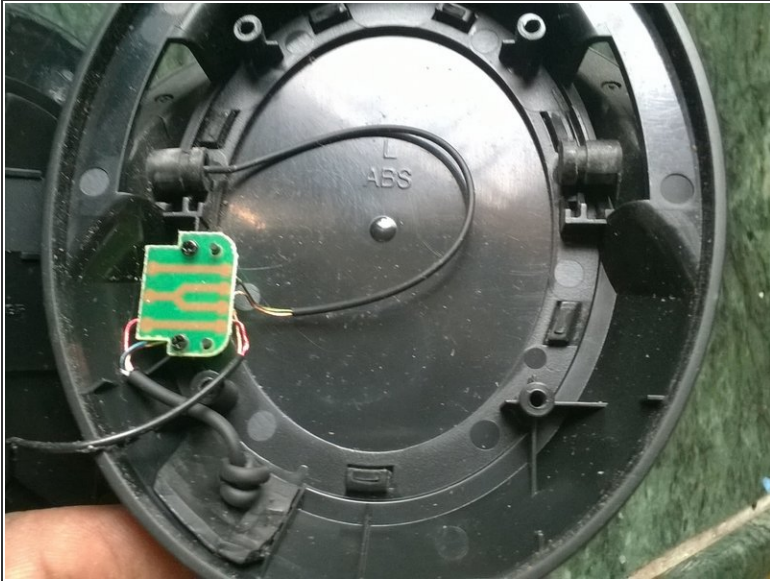


- The speaker assembly is now held in the shell just by a number of tabs around the edges. Gently prise it out from these tabs and remove it.

 Take care not to strain the wires.

-  On reassembly, make sure the headband fork is correctly positioned otherwise it will be impossible to locate the speaker faceplate correctly in the shell.
-  Also on reassembly, make sure the speaker face plate is secured behind all the tabs.

Step 4



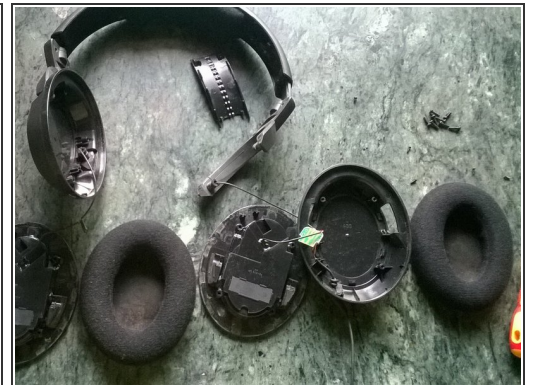
- On the right side connection are made via a small printed circuit board. Remove 2 screws in order to remove this for re-soldering or replacement of any of the wires.
- ⓘ On replacing this circuit board, take care to ensure that it's both the right way round and the right way up
- ⓘ If you are replacing the main lead with the jack plug on the end, make sure that you have suitable strain relief to prevent the lead pulling on the soldered connections.
- ⓘ The wire colours are:
 - Right: Red
 - Left: Green
 - Common (Ground): Gold.

Step 5



- Insert wisdom here.

Step 6



- Insert wisdom here.

To reassemble your device, follow these instructions in reverse order.

Camera used : lumia 520