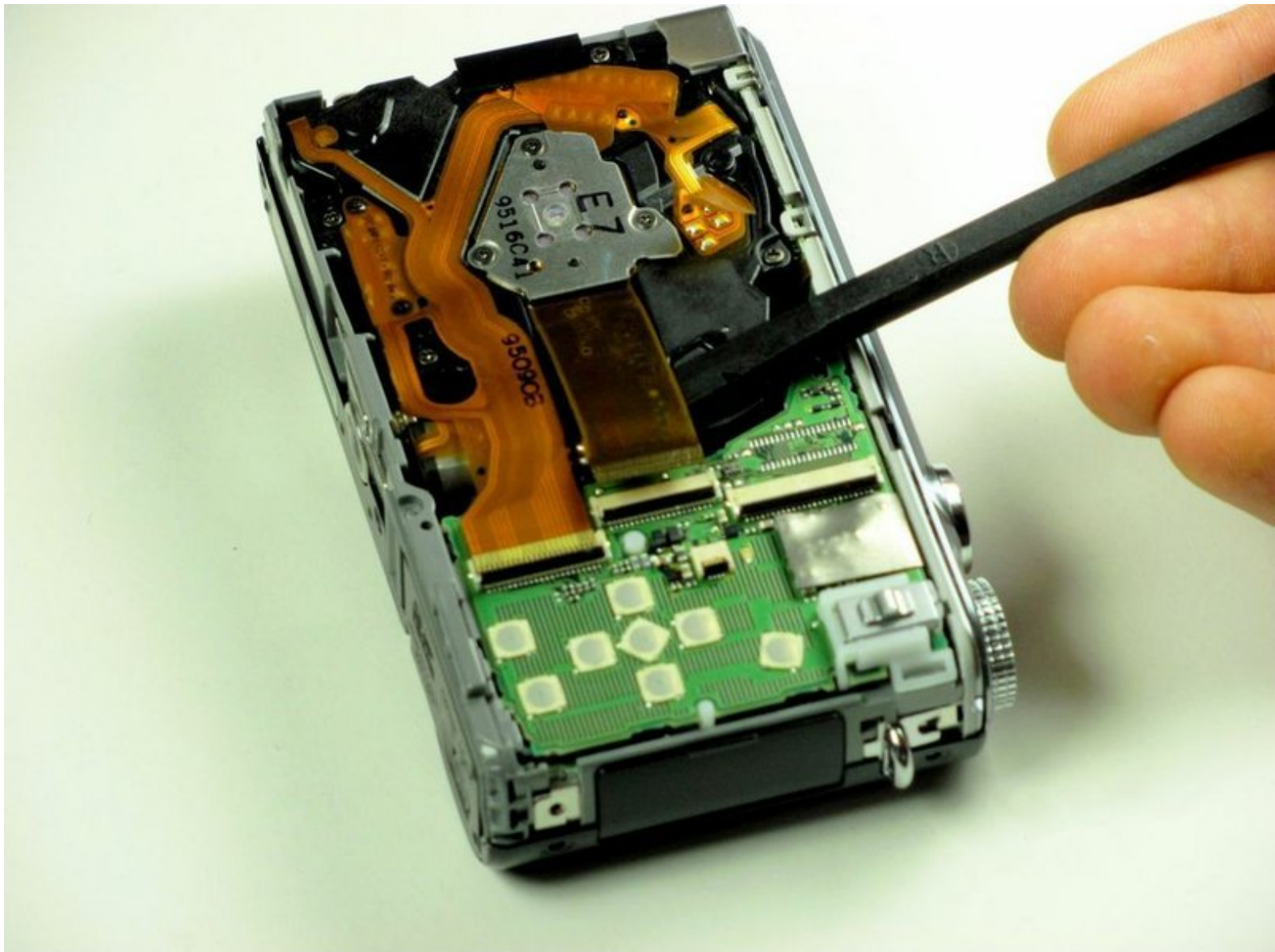




Disassembling Panasonic Lumix DMC-ZS3 Lens

These steps will show you how to correctly, and efficiently remove your camera's lens.

Written By: Kellen Ericson



INTRODUCTION

The lens can be safely removed in only seven simple steps.



TOOLS:

- [Phillips #00 Screwdriver](#) (1)
 - [Spudger](#) (1)
-

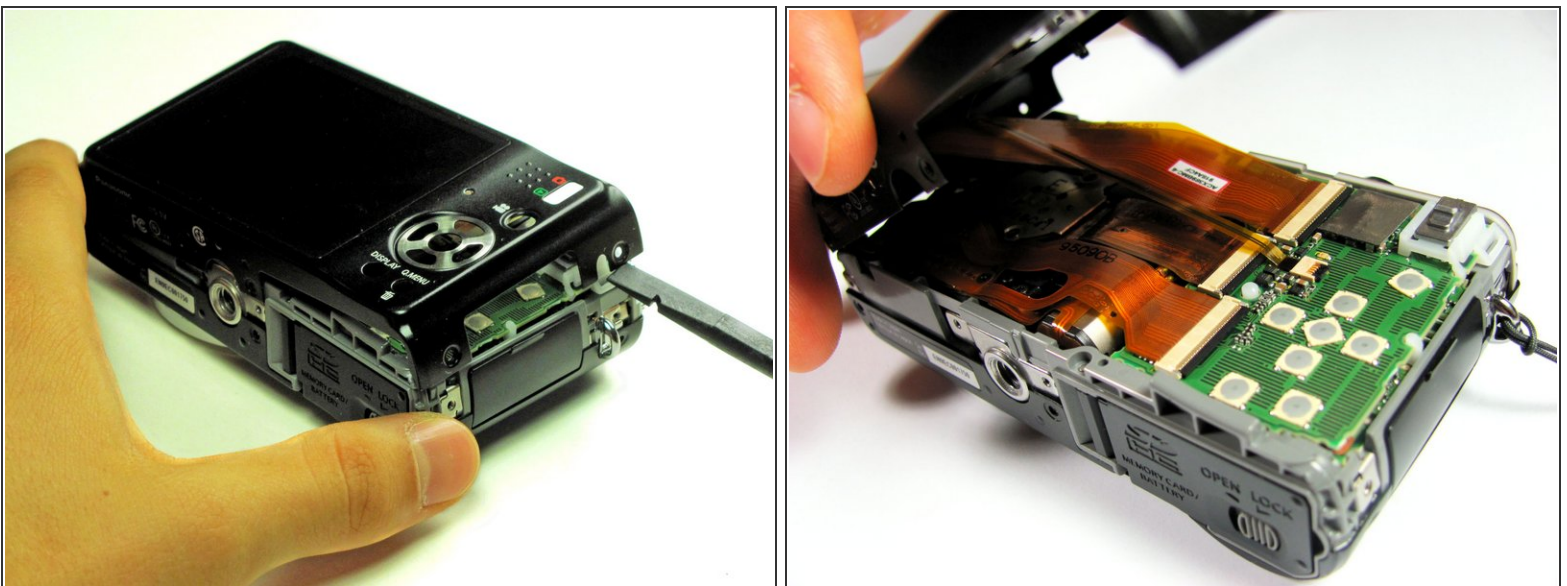
Step 1 — Back Cover



- Remove the following eleven screws securing the covers to the ZS3
 - Eleven 3 mm Phillips screws

⚠ Using too much pressure when removing the screws may strip the screws and complicate screw removal at a later time.

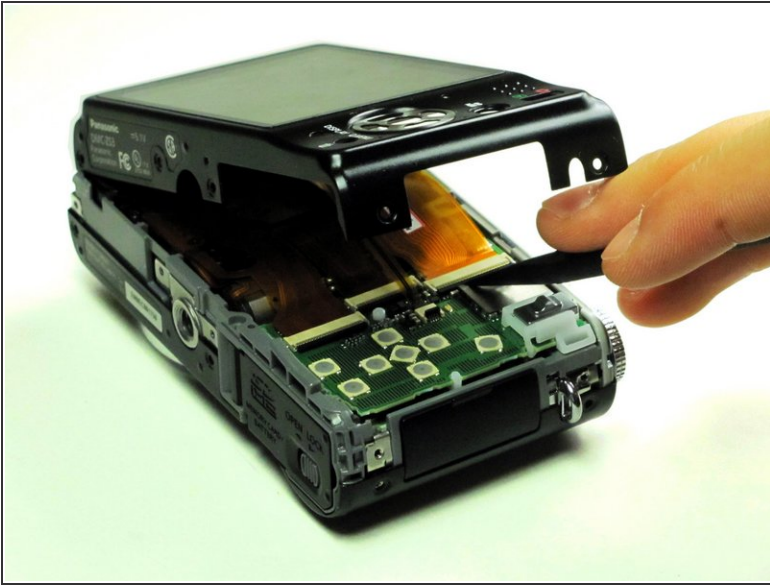
Step 2



- Use the flat end of a spudger to pry apart the back cover from the rest of the unit as shown.

⚠ Be sure to carefully and slowly lift the back cover. Forcefully lifting the back cover and fully separating it at this point may ruin internal connections.

Step 3



- Using your fingernail or a spudger, flip up the ZIF locking flap on the two LCD ribbon cable sockets that connect the back cover to the rest of the unit.

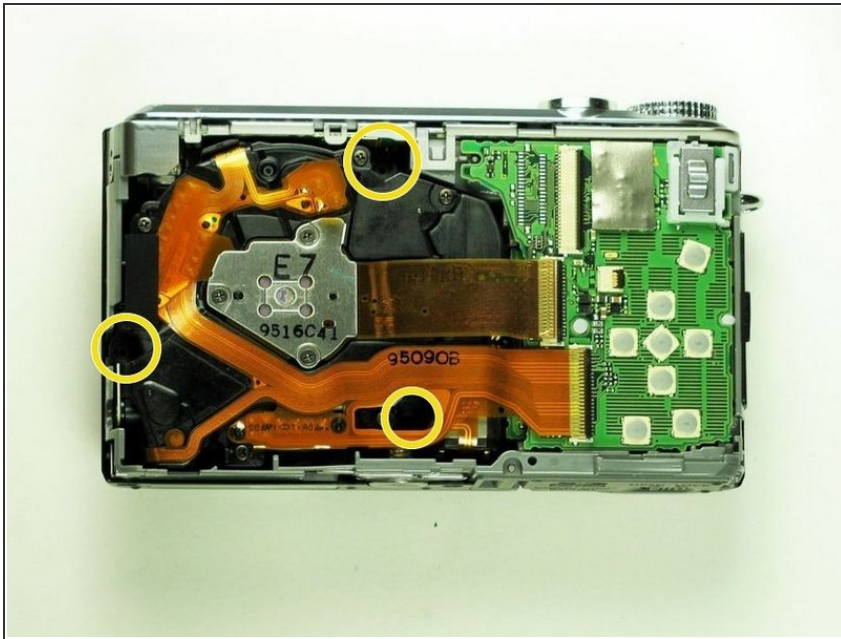
⚠ Be sure you are opening the locking tab, not pulling against the socket mounted to the board.

Step 4



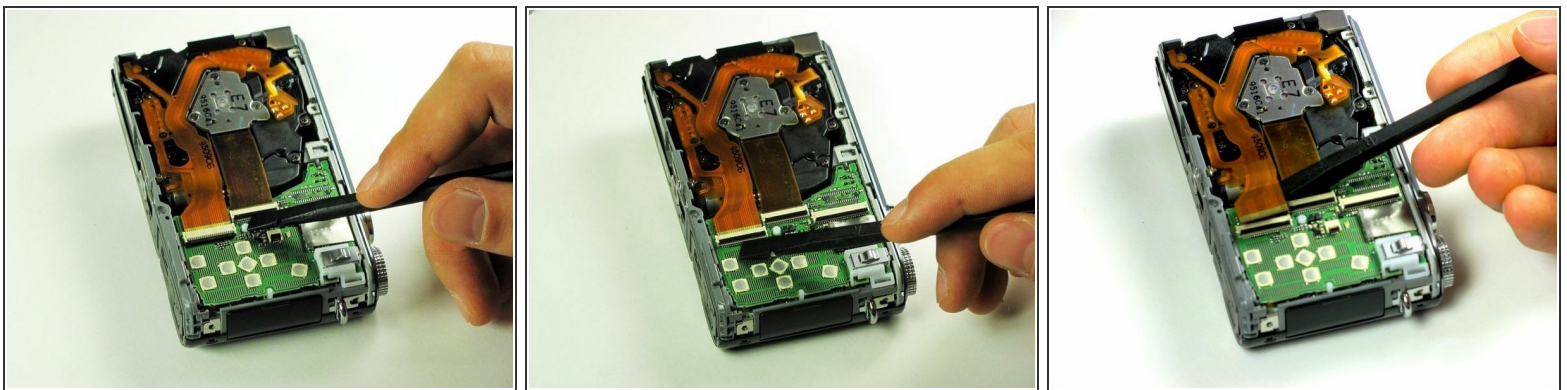
- Remove the two LCD board ribbon cables out of their sockets.

Step 5 — Lens



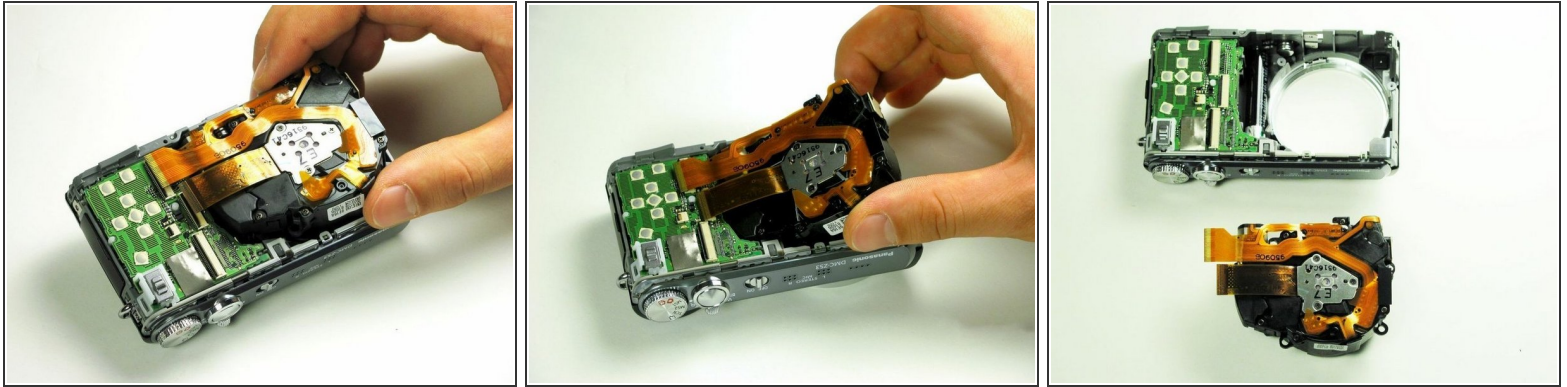
- Remove the three black screws that surround the lens.
- 3mm Phillips screws

Step 6




- Using a spudger, flip up the locking flaps on the two LCD ribbon cable sockets that connect the back cover to the rest of the unit.
- Disconnect the LCD ribbons gently using the spudger.

Step 7



- Using your fingers or a spudger, gently remove the lens mechanism from the rest of the camera.
- Unlock lens mechanism located on the bottom of the device using your fingers.

 Be sure to not use excessive force to avoid damaging any parts.

To reassemble your device, follow these instructions in reverse order.