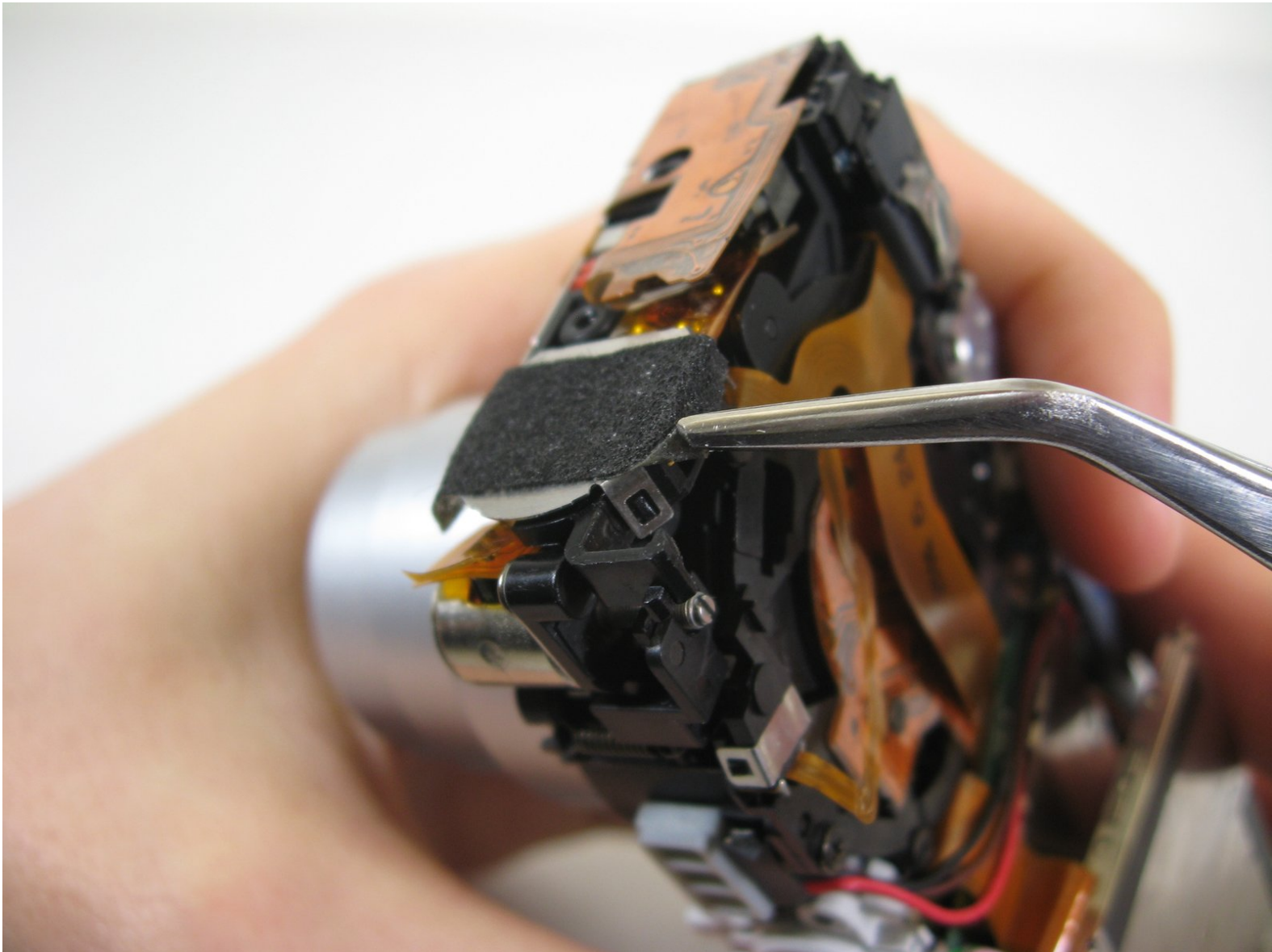




Disassembling Pentax Optio S4i Lens Assembly

Remove Lens assembly from camera's frame

Written By: Bassem Tossoun



INTRODUCTION

This guide will show you how to remove the main camera lens assembly from the camera's frame.



TOOLS:

- [Phillips #0 Screwdriver](#) (1)
 - [Spudger](#) (1)
 - [Tweezers](#) (1)
-

Step 1 — Front and Back Cover



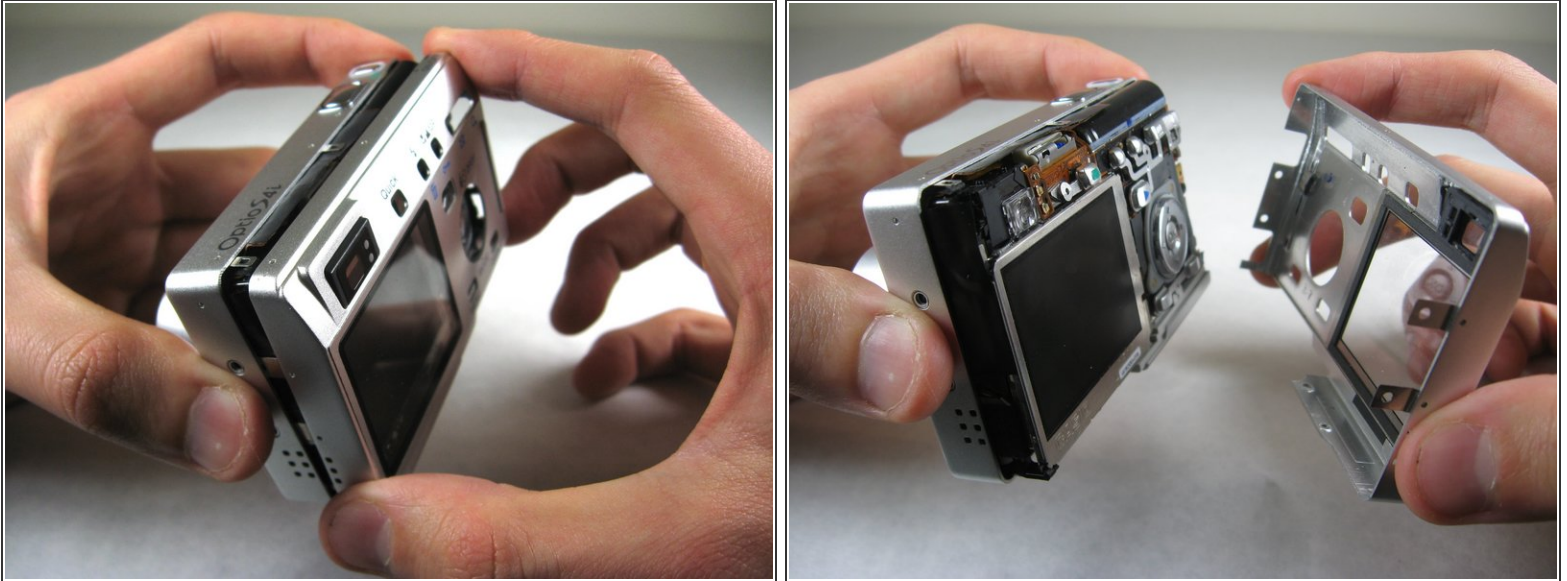
- Remove the following screws:
 - Two silver 3.15mm Phillips #00 screws on the right side of the camera
 - Two silver 2.08mm Phillips #00 screws on the left side of the camera

Step 2



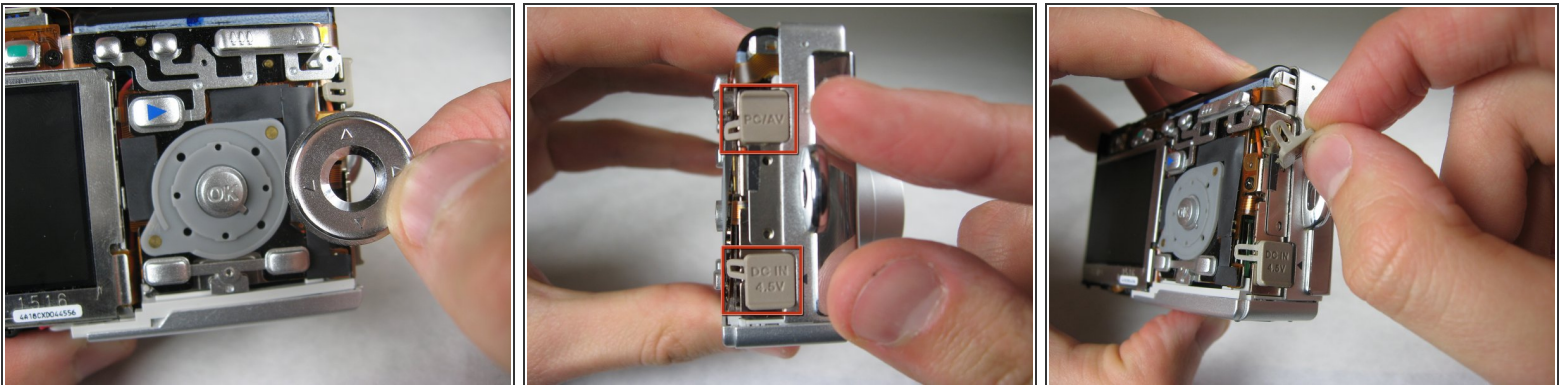
- Remove the two indicated screws on the bottom of the camera:
 - The screw circled in red is a longer silver 3.15mm Phillips #00 screw
 - The screw circled in blue is a shorter silver 2.25mm Phillips #00 screw


Step 3



- Carefully pull the back of casing away from the front.

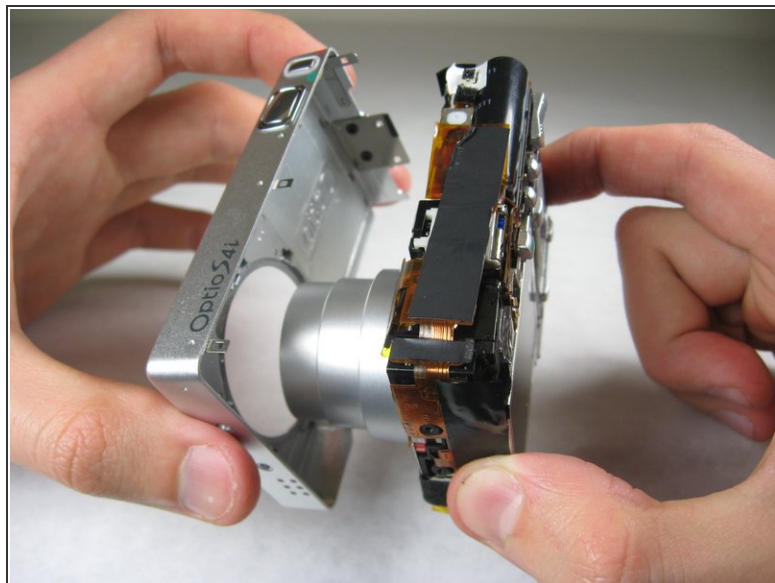
Step 4



 After removing the back cover, several things must be removed.

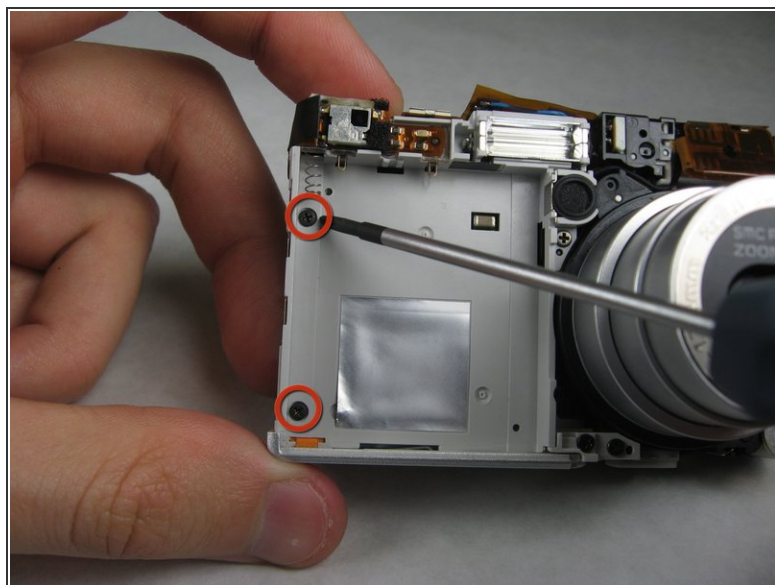
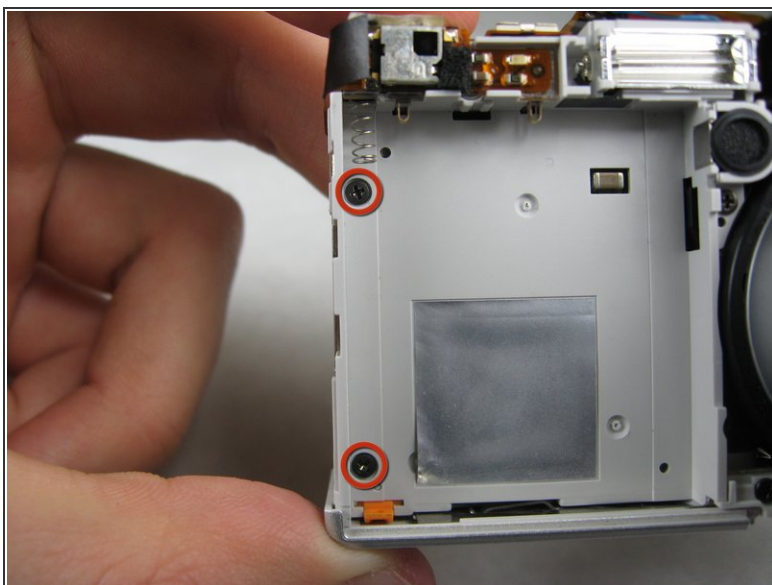
- Silver donut-shaped button will fall off. Place separately. Remove the plug covers on the right side of camera, labeled “PC/AV” and “DC IN 4.5V”.

Step 5



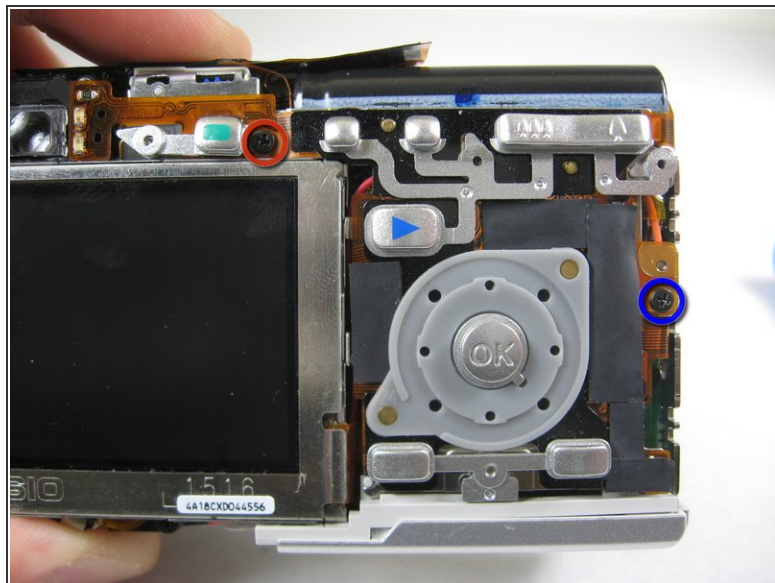
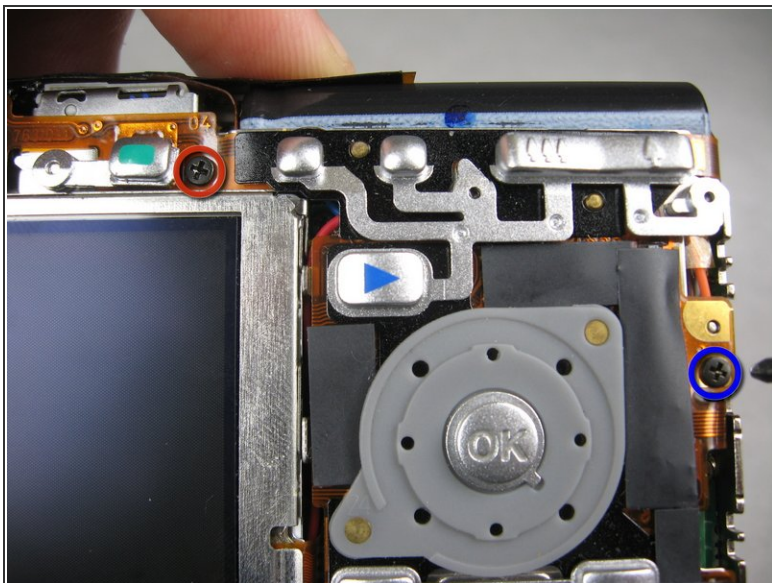
- To remove the front cover, gently hold the inside structure of the camera and slowly pull the front cover off.

Step 6 — LCD



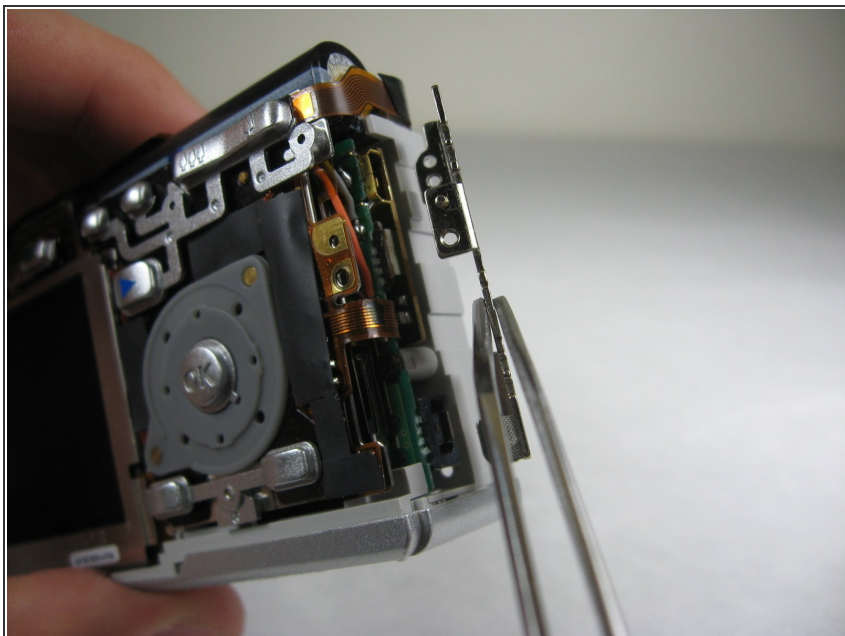
- On the front of the camera, in battery case, remove screws indicated:
 - Two black 2.05mm Phillips #00 screws

Step 7



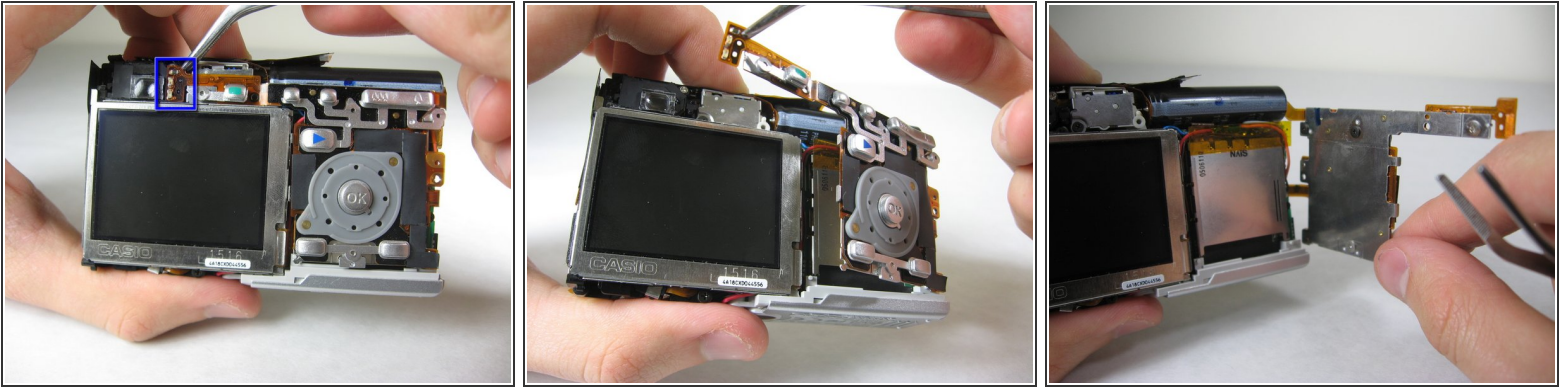
- Flip the camera over to the backside and remove screws indicated:
 - The screw circled in red is a longer black 3.00mm Phillips #00 screw
 - The screw circled in red is a shorter black 2.00mm Phillips #00 screw

Step 8



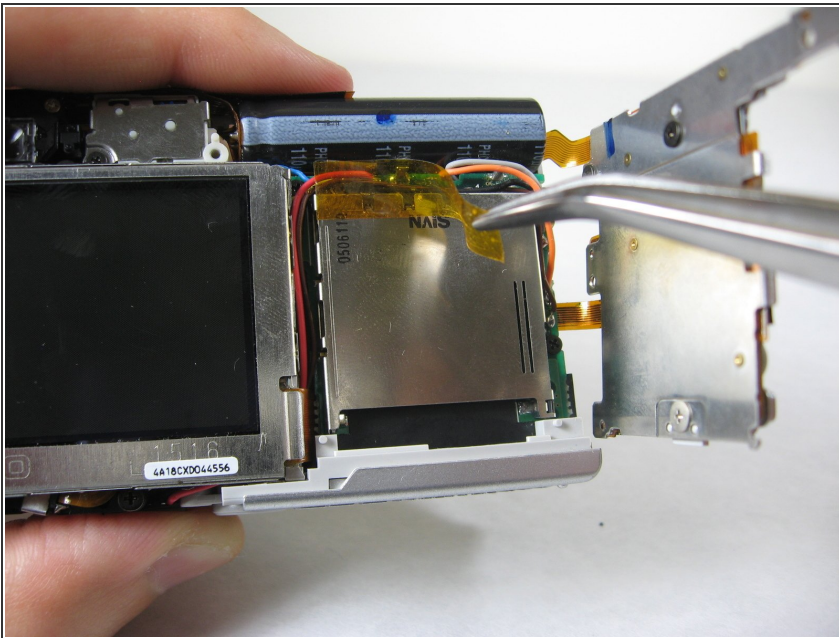
- Pull the cover plate off for the two power cord jacks.

Step 9



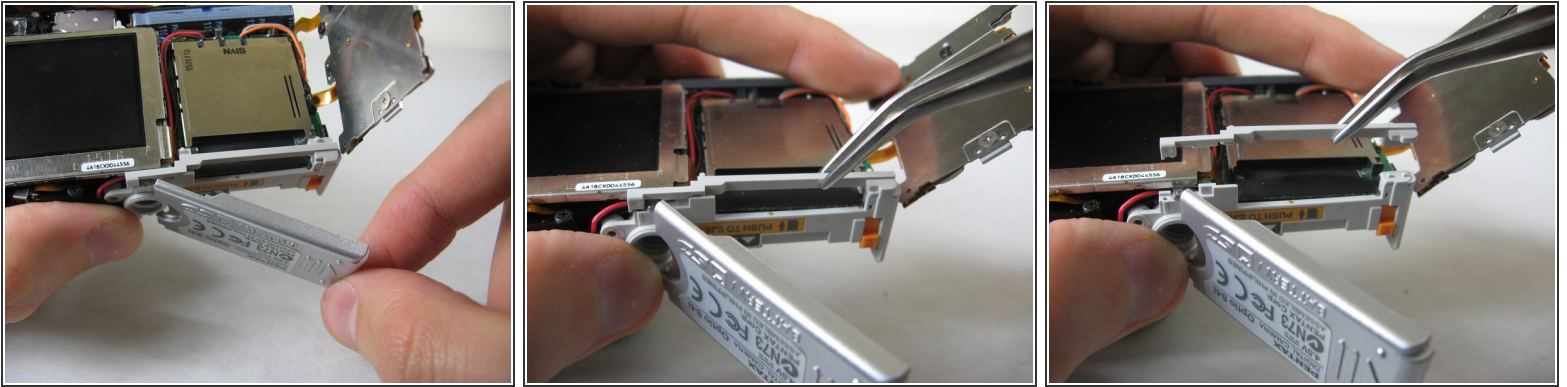
- Cautiously and gently pull up the control board at the upper left corner, next to the viewfinder.

Step 10



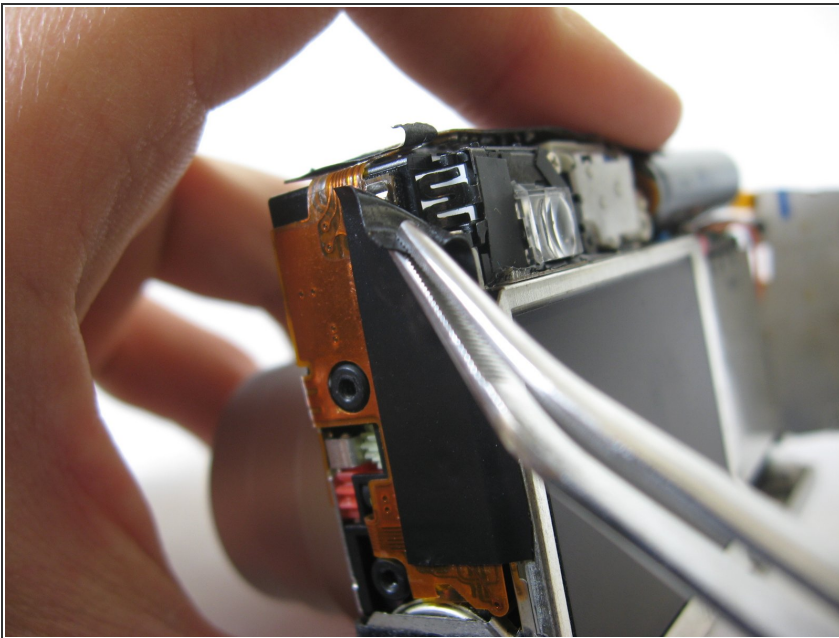
- Remove the orange tape on top of the SD cardholder.

Step 11



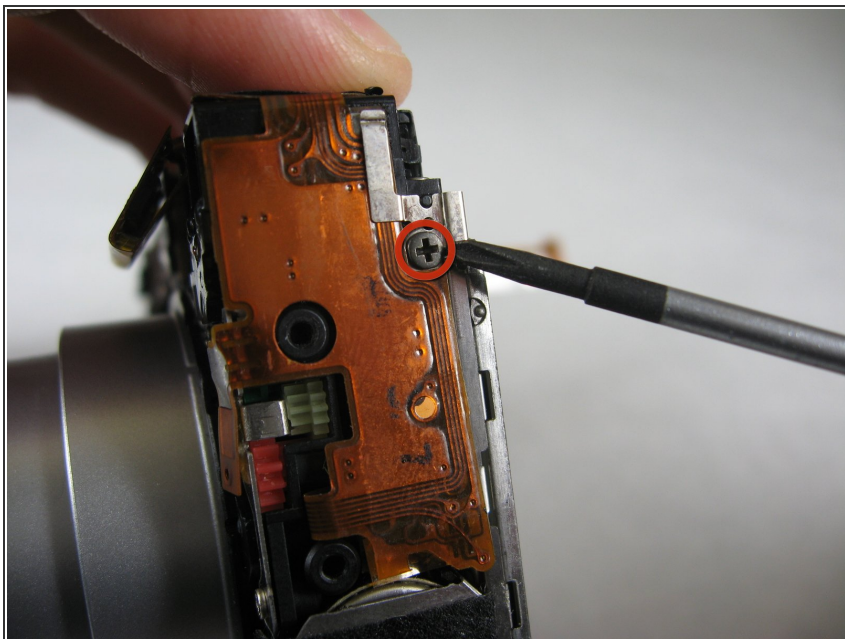
- Open the battery cover and lift plastic piece off.

Step 12



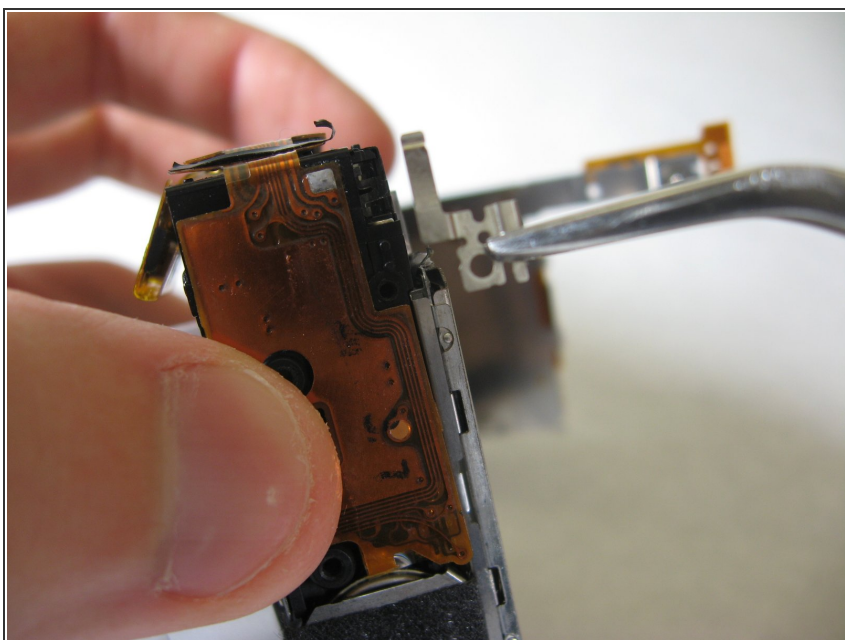
- Remove tape on left side of camera.

Step 13



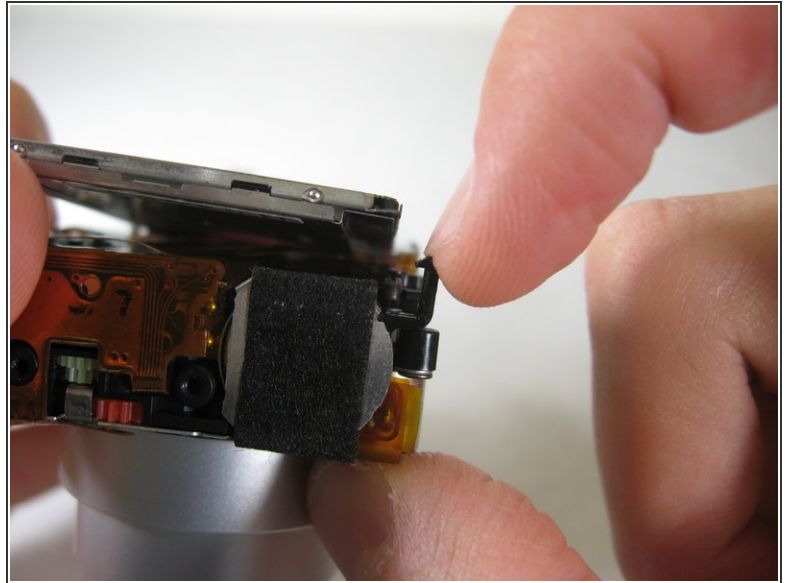
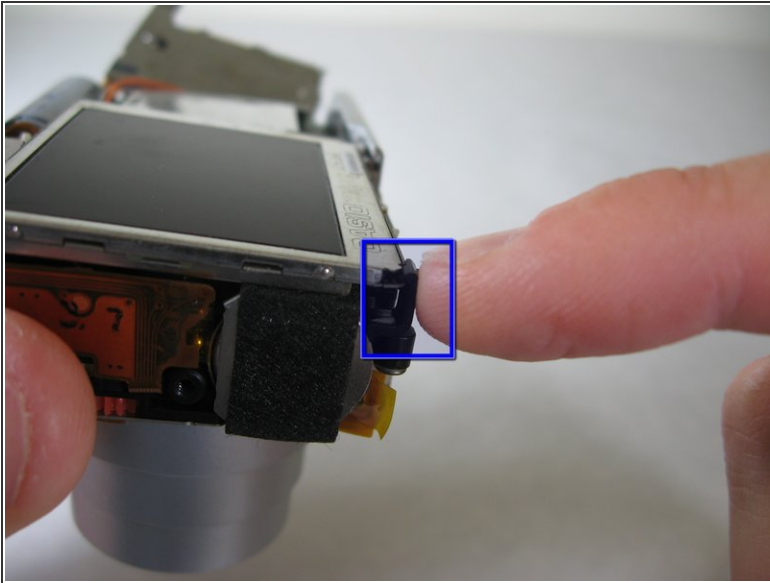
- Remove the indicated 2.40mm Phillips #00 screw to release top left LCD bracket.

Step 14



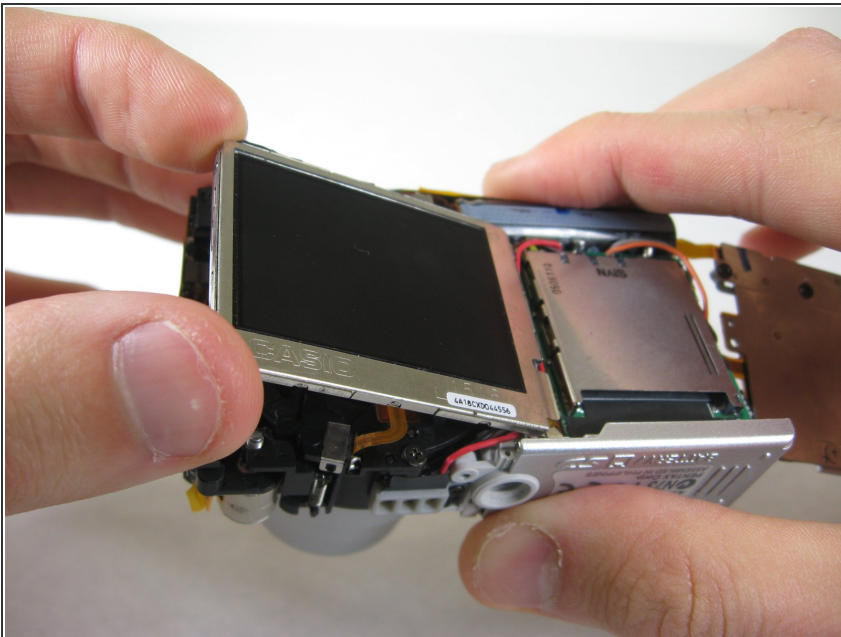
- Remove top left LCD bracket.
- ⚠ This is a small piece, be careful not to lose it.

Step 15



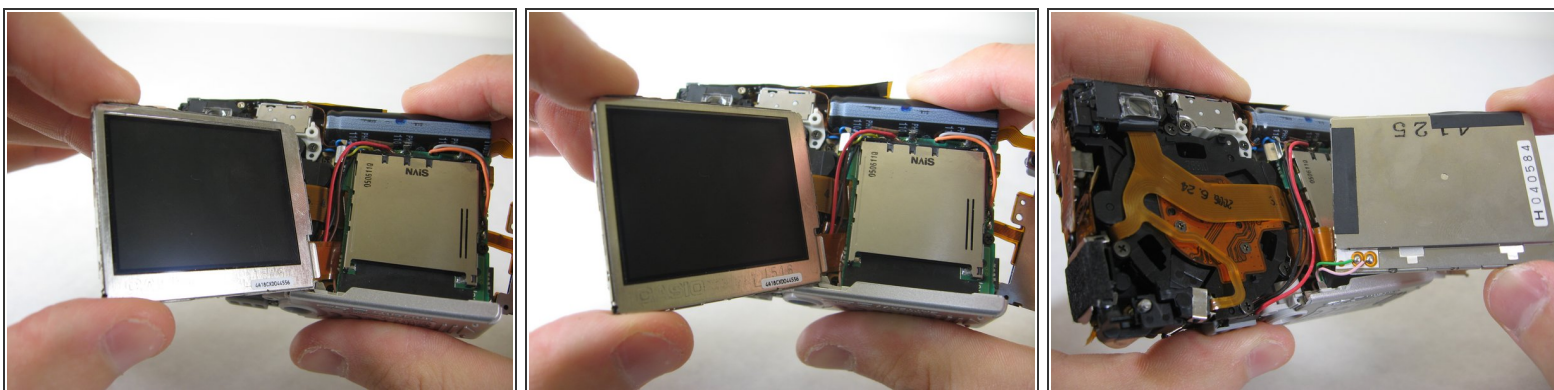
- Push down bottom left LCD bracket to release the LCD from grip.

Step 16




- Gently lift up LCD screen.

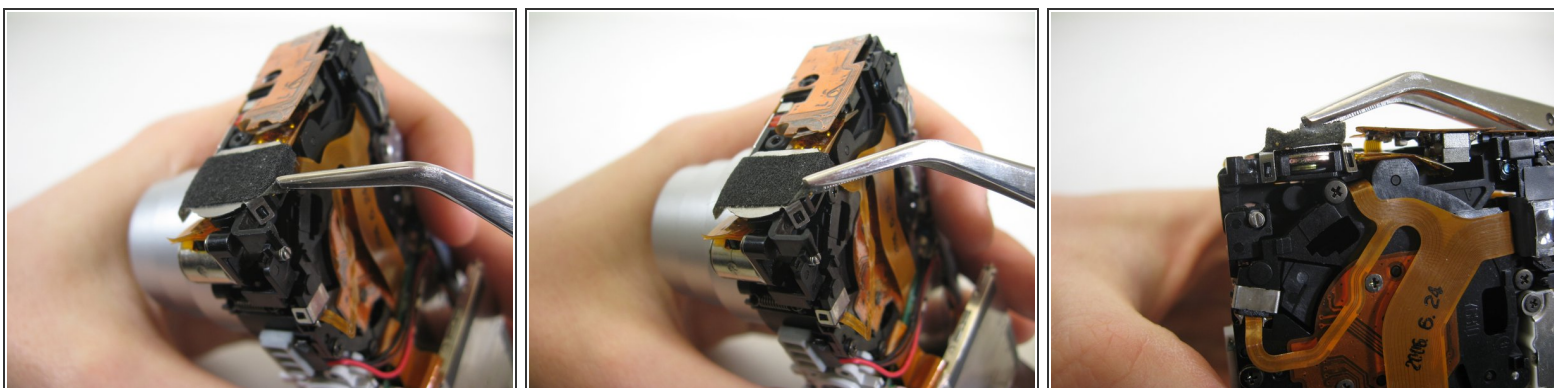
Step 17



- Slowly pull LCD screen to the left to remove it from the other grips.

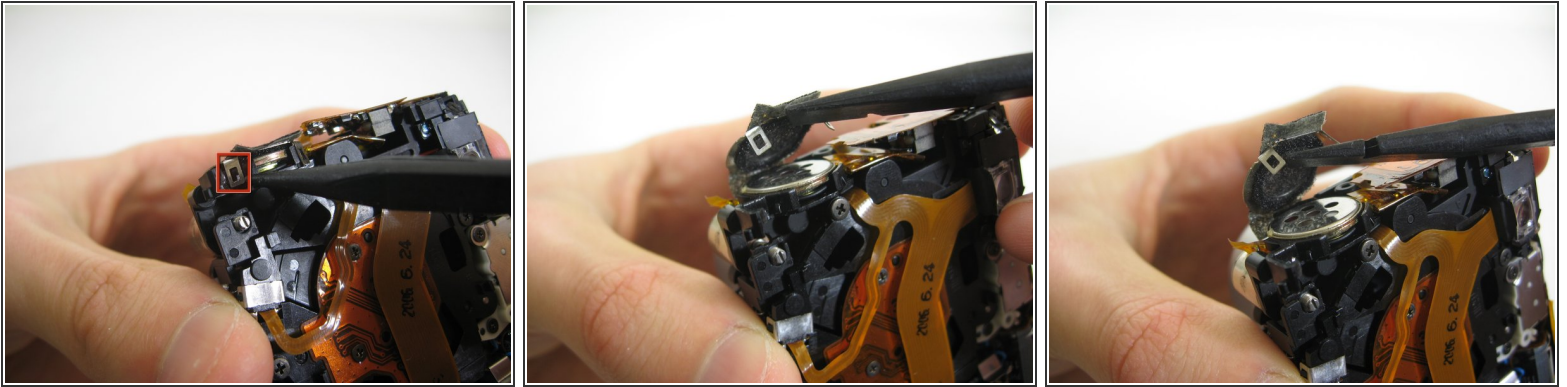
 **BEWARE:** The LCD screen is attached to the logic board by two wires at the bottom.

Step 18 — Lens Assembly



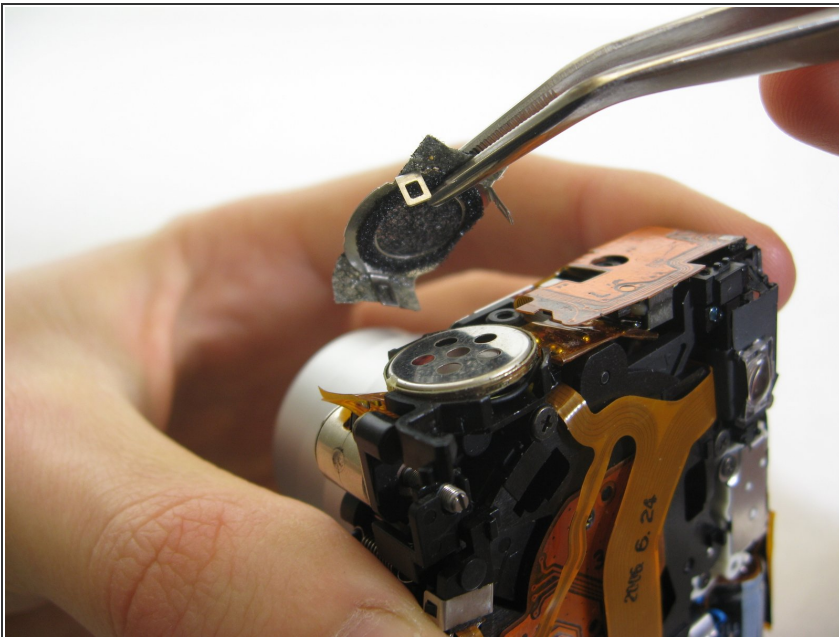
- Lift up tape slightly on both sides of speaker.

Step 19



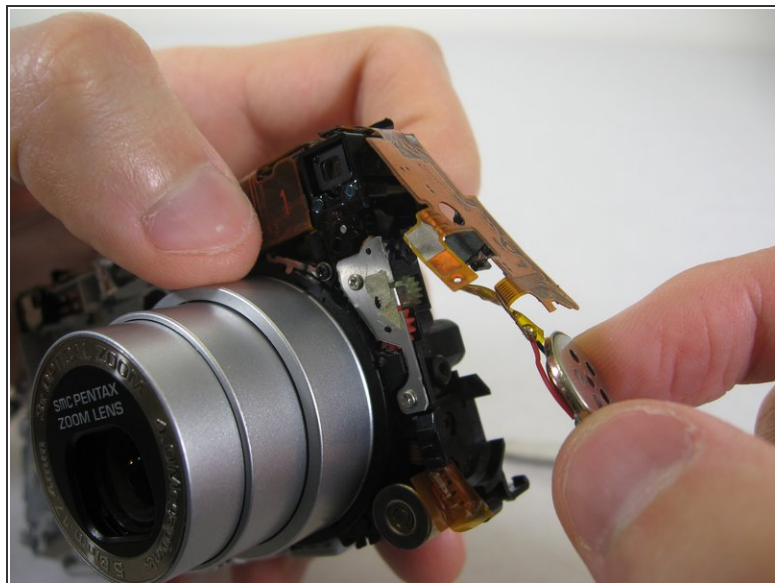
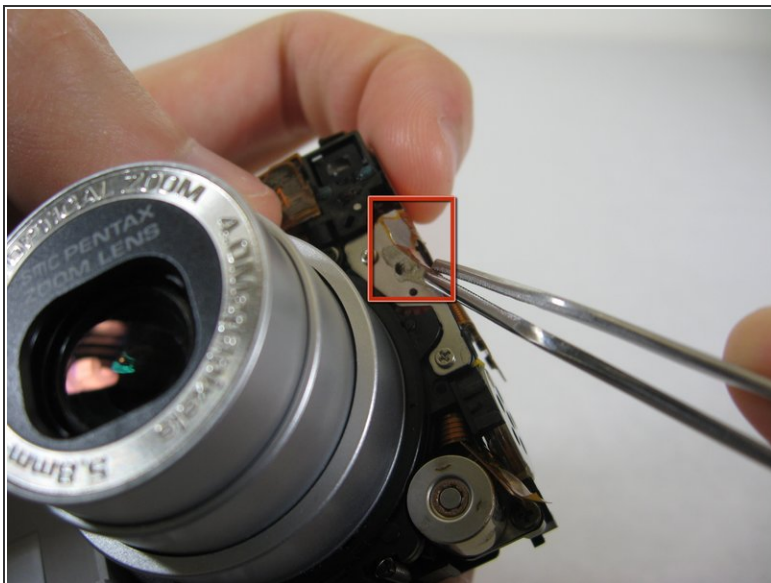
- Use the pointed end of a spudger to lift up brackets.
- Lift speaker cover out.

Step 20



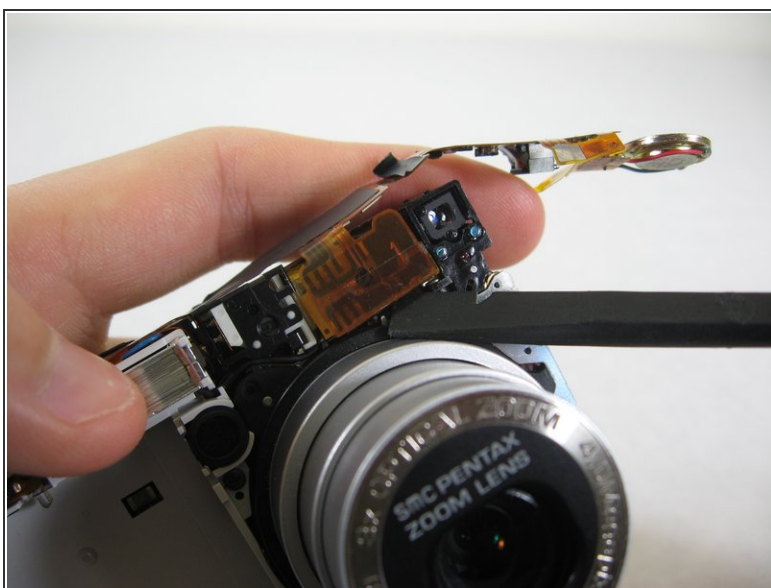
- Remove speaker cover.

Step 21



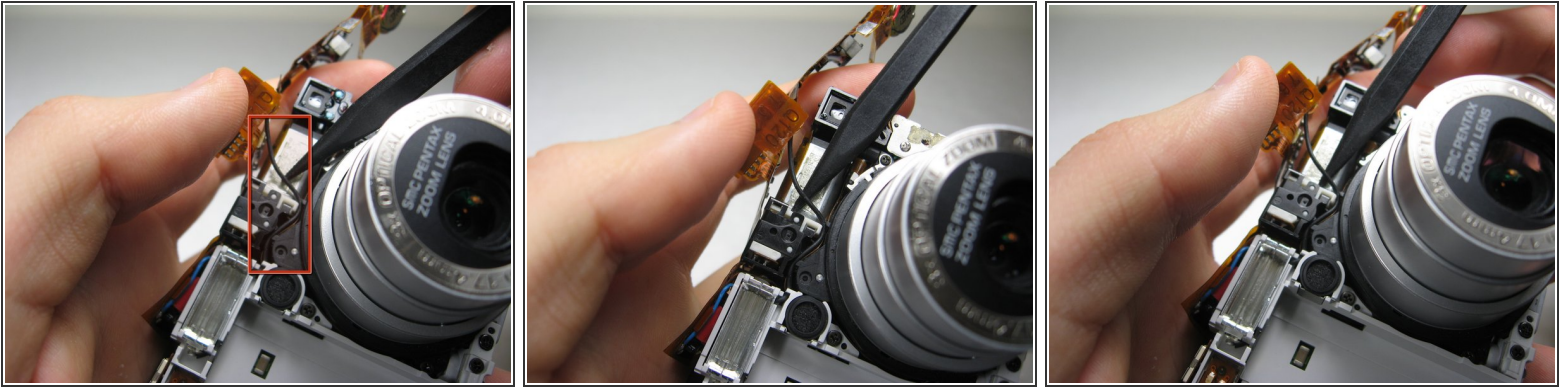
- Turn camera to front.
- Carefully peel off orange wire tape. The tape is glued to the surface indicated.
- Lift speaker from holder.

Step 22



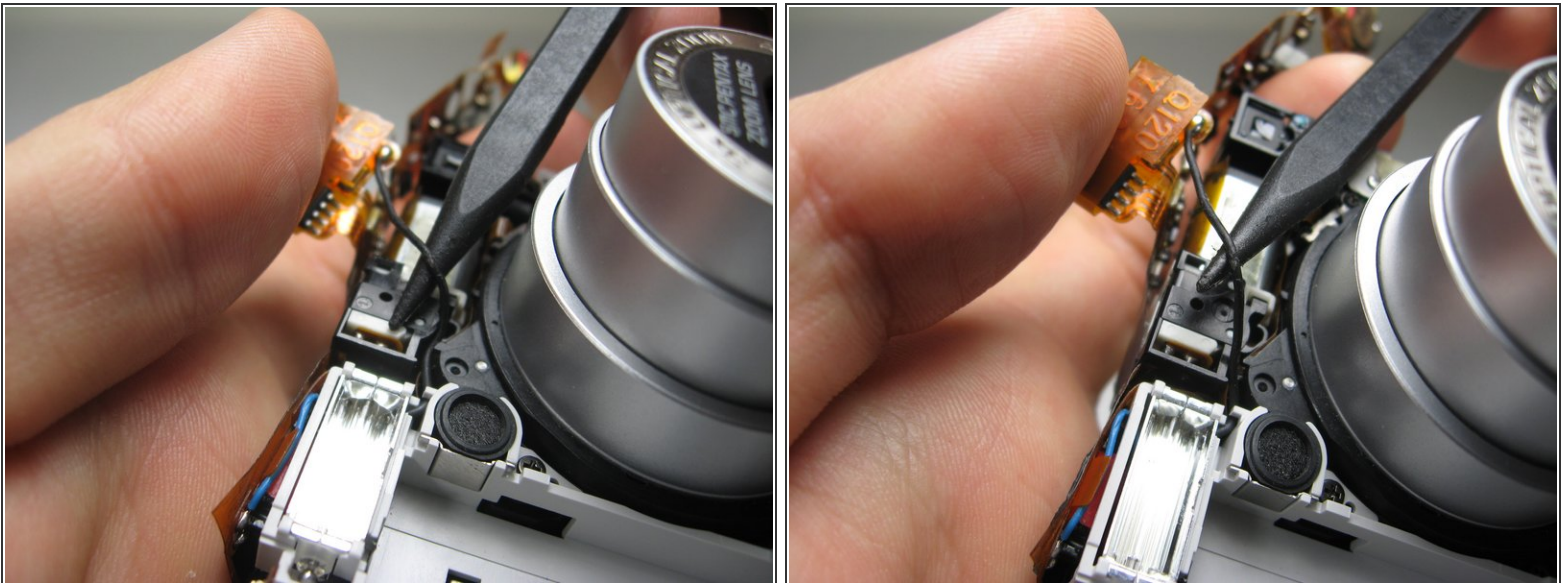
- Use a wedge to lift up the wire tape flap.

Step 23



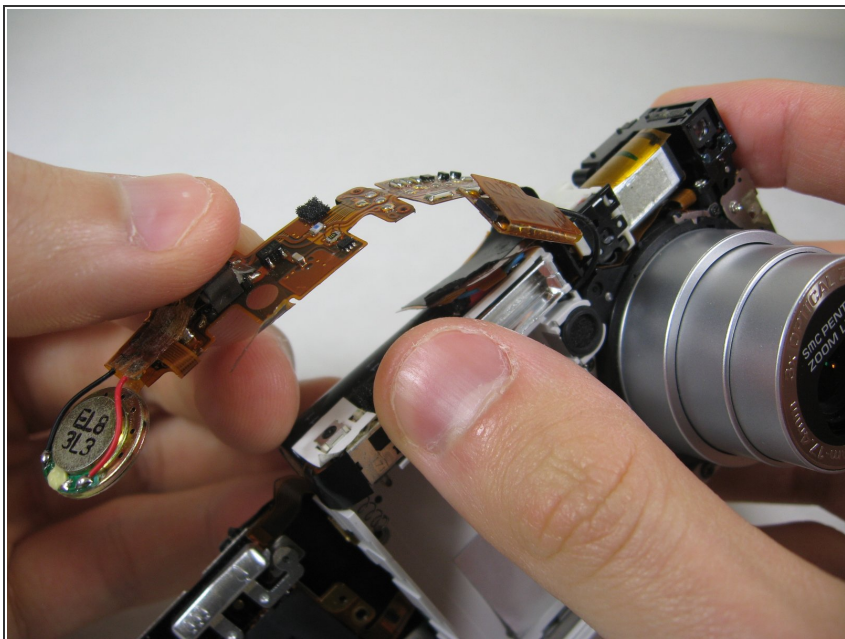
- Insert the point of a spudger underneath the wire shown.

Step 24



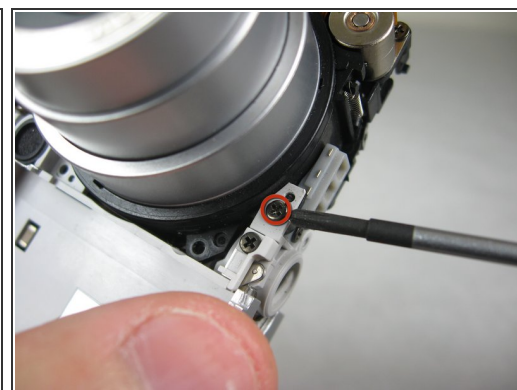
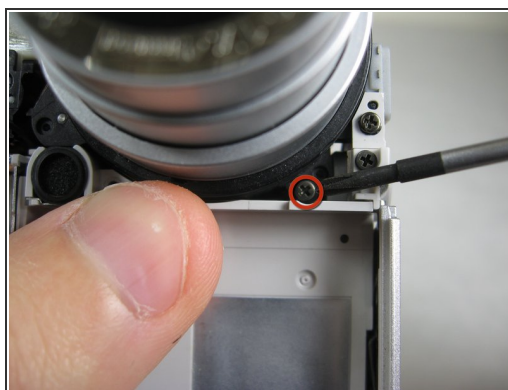
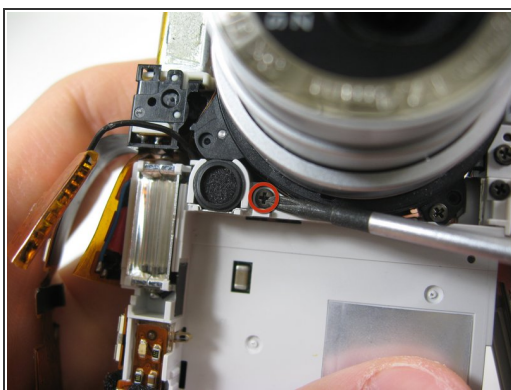
- Carefully lift the wire out of the crevasses.

Step 25



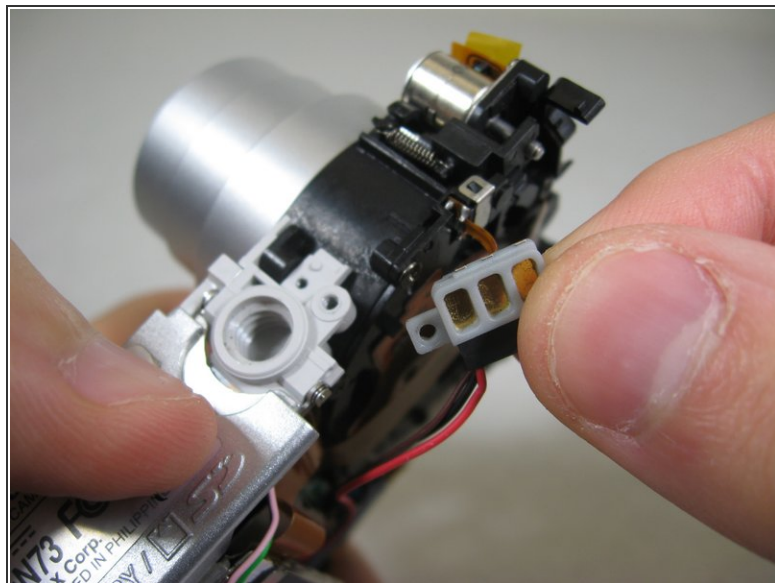
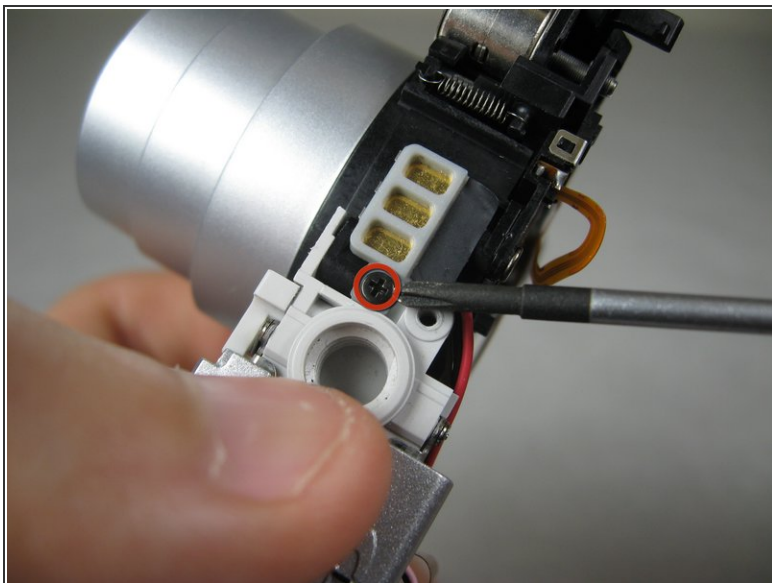
- Slowly bend the speaker's wire tape away from the lens assembly. Avoid creasing the tape.

Step 26



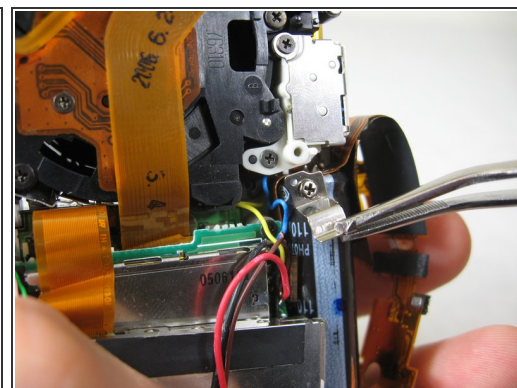
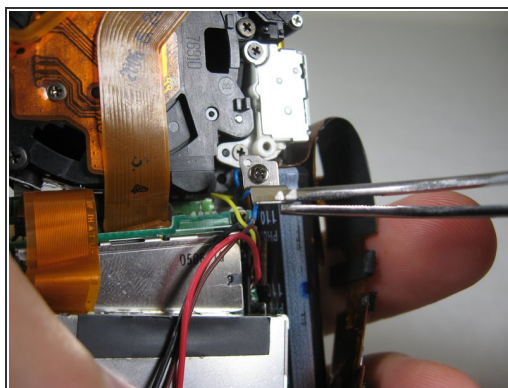
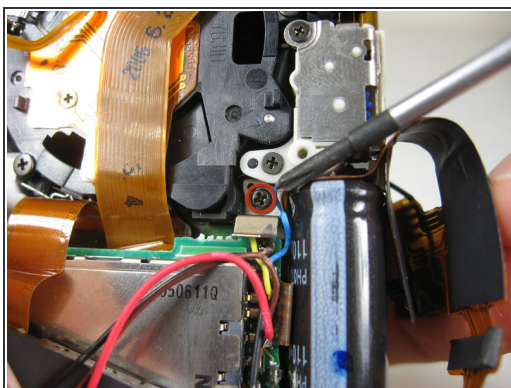
- Remove indicated screws:
 - Three Black 3.80mm Phillips #00 screws.

Step 27



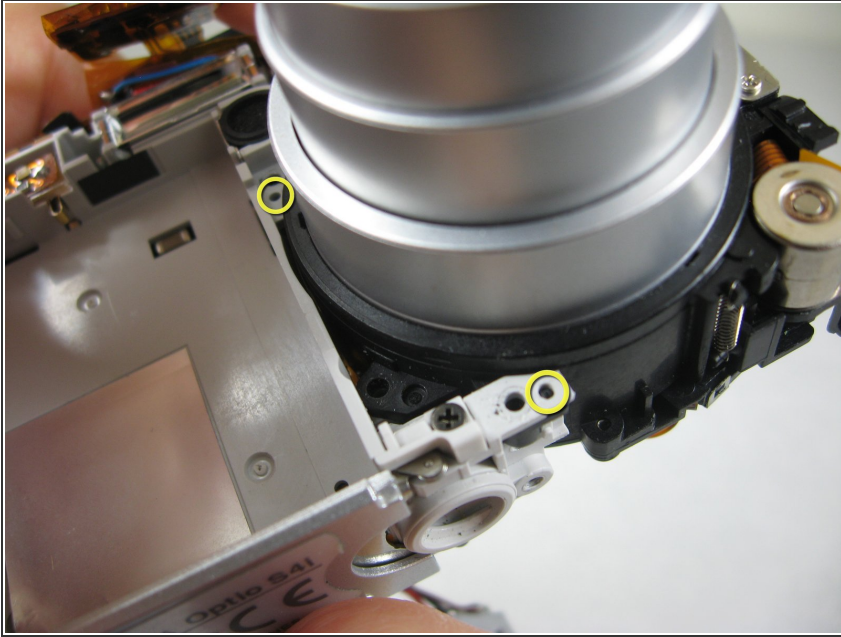
- Remove the indicated black 3.40mm Phillips #00 screw on the bottom of the camera.
- Remove copper leads.

Step 28



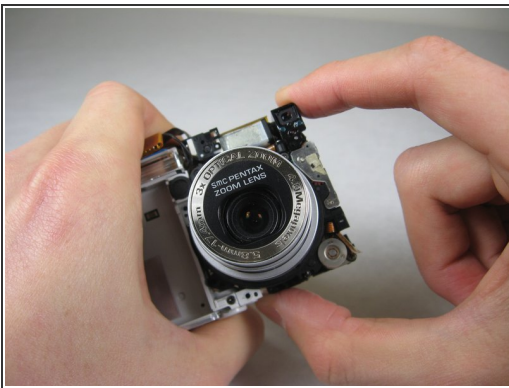
- Unscrew the indicated 3.80mm Phillips #00 screw on the back of the camera.
- Remove screw and bracket.


Step 29



- Turn the camera over to the front.
- In the following step, you will undo the indicated pegs. PROCEED TO THE NEXT STEP.

Step 30



- Carefully holding the camera, grab the corresponding two points.
 - Carefully twist the lens assembly away from you. You will be turning your hand clockwise.
 - Pull lens assembly out.
-  The lens assembly is attached to the logic board by wire tape.

To reassemble your device, follow these instructions in reverse order.

