



Disassembling Philips Portable Speaker SBA1610 37 Battery Casing

This guide illustrates how to access the battery panel and how to remove the battery panel. This allows access to the inside of the speaker system.

Written By: Christopher Neal





TOOLS:

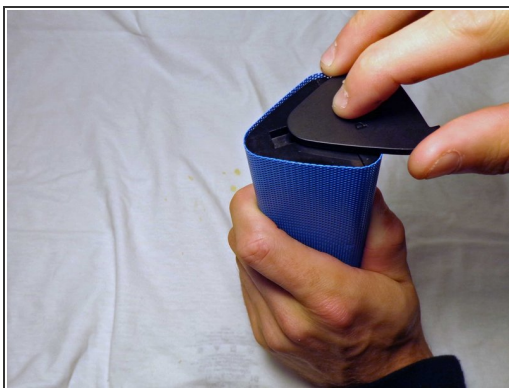
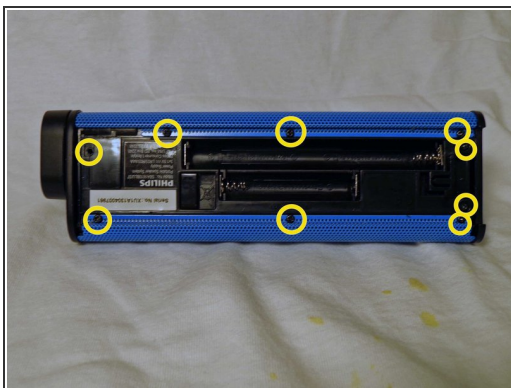
- [Phillips #0 Screwdriver](#) (1)
 - [iFixit Opening Tools](#) (1)
-

Step 1 — Battery Casing



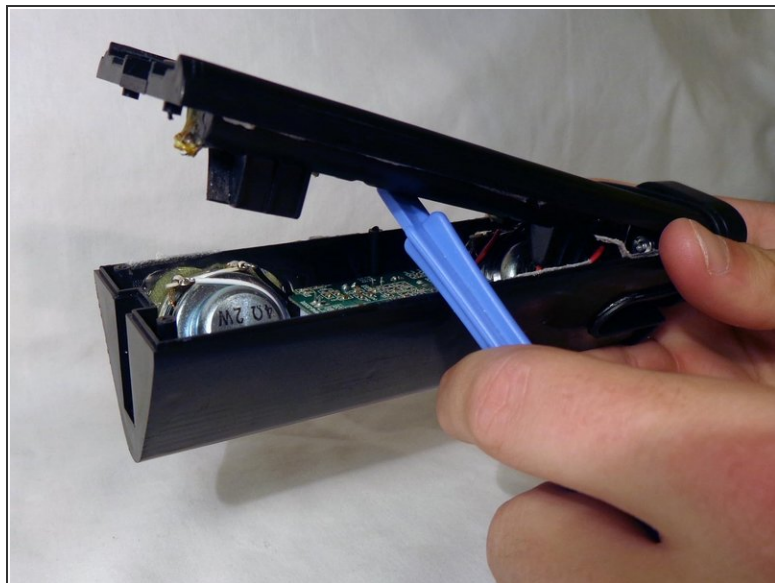
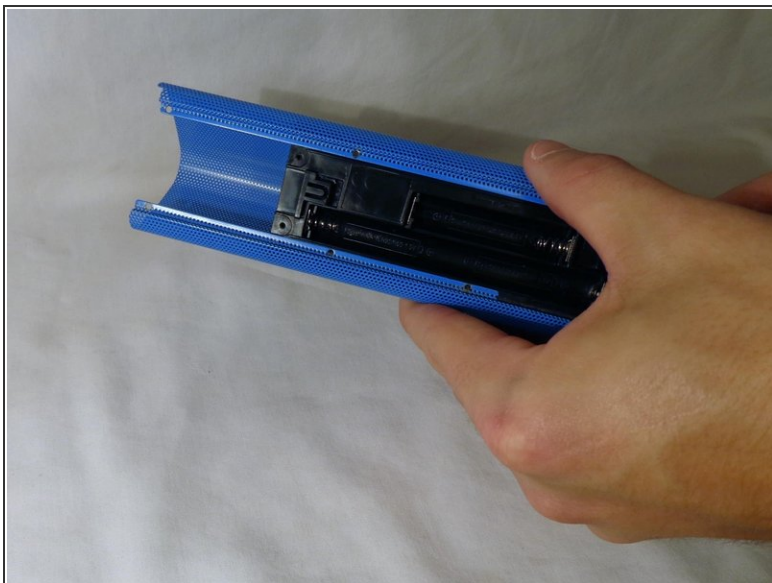
- Remove the back cover by sliding it off.
- Remove the 3 AAA batteries.

Step 2



- Unscrew the nine exterior screws on the back panel using a PH0-size Philips-head screwdriver.
 - NOTE: A larger screwdriver head and more force may be required for damaged screws.
- Remove the triangular end piece by pulling it straight off.

Step 3



- Remove the colored grill by sliding it off in the direction of the removed end piece.
- Pry off the back battery panel with the plastic opening tool.
 - NOTE: Be careful to avoid tearing any wires.

To reassemble your device, follow these instructions in reverse order.