



# Disassembling Philips wake up light HF3485 Diffuser

In this guide we will be removing the diffuser and the bottom panel of this lamp. This is necessary to access the electronic boards.

Written By: David



---

## INTRODUCTION

In this guide we will be removing the diffuser and the bottom panel of this lamp. This is necessary to access the electronic boards.

---

### TOOLS:

- [Sharp knife, Scissors, Blue Jeans](#) (1)
  - [Flathead Screwdriver](#) (1)
  - [Philips extra long screw driver](#) (1)
  - [2.5 mm Flathead Screwdriver](#) (1)
-

## Step 1 — Main board



- **WARNING** Make sure that the power cord of the lamp is unplugged and thus you will not encounter any live wire that tend to hurt...
- Stand the lamp up on a table and slightly press on the top gray panel of the lamp.

## Step 2



- Turn the lid anticlockwise.
- The top can now be easily removed.

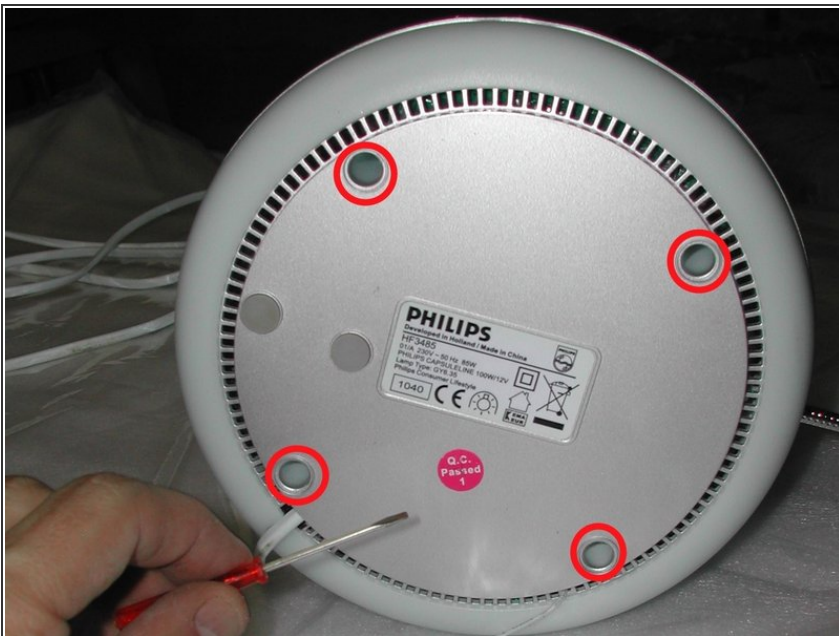


### Step 3



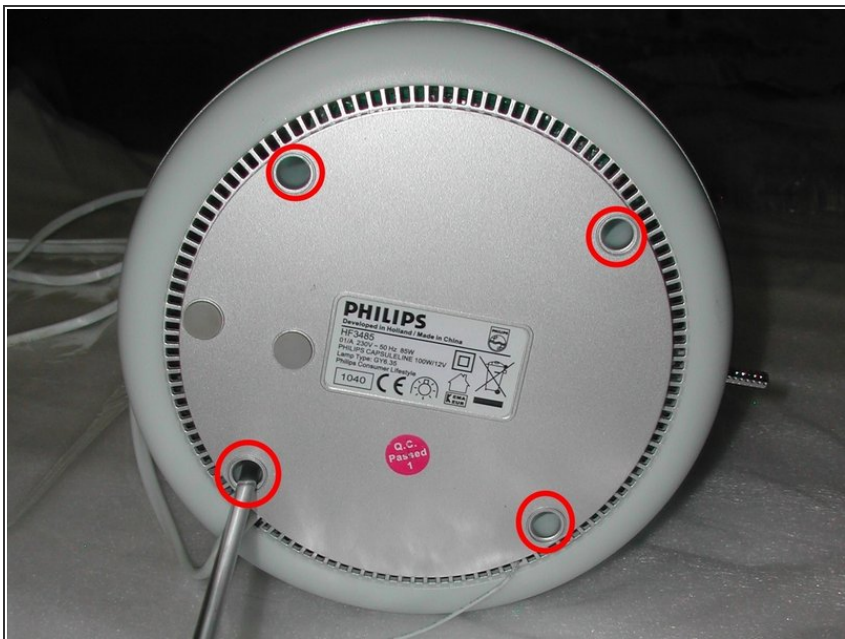
- Take off the bulb from the socket.
- By means of a long Philips screwdriver remove the 3 screws that holds the GU5.3 light bulb socket in place.

### Step 4



- Lay the lamp down on the table.
- With a small flat screwdriver peel off the four rubber feet hiding screws of the lamp bottom panel.

## Step 5



- With a long Philips screwdriver remove the four screws from the deep holes of the bottom panel.

## Step 6



- With a small flat screwdriver remove the bottom trim by gently levering at the snaps joining it with the command unit.

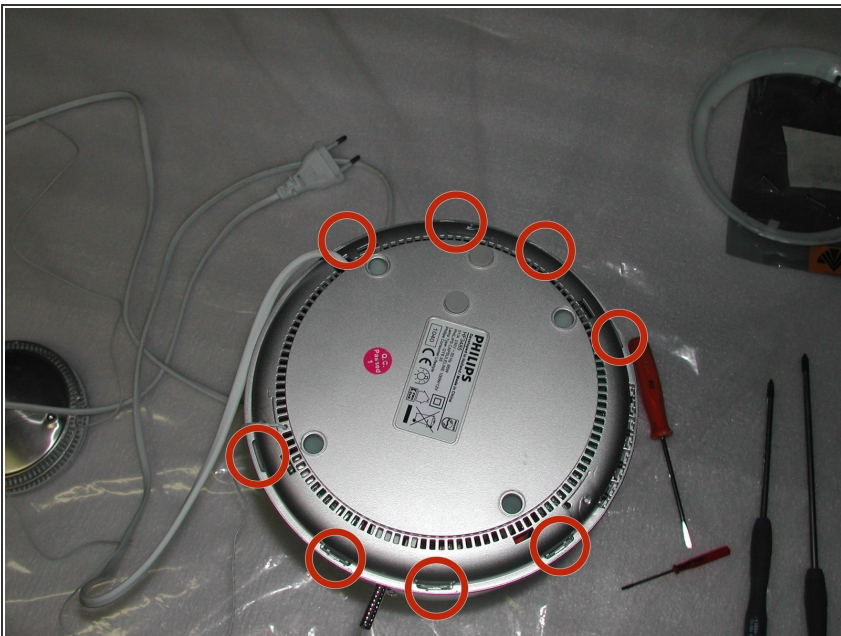


## Step 7



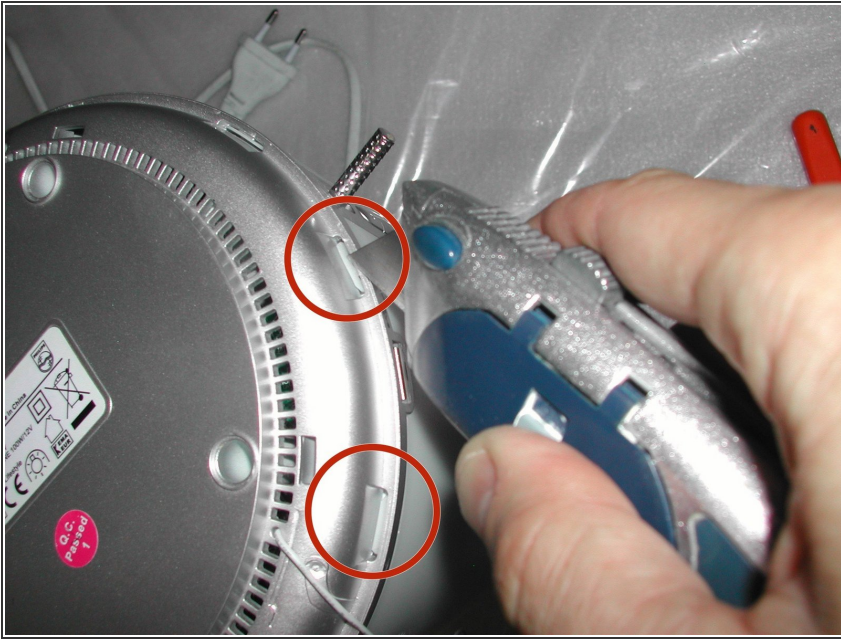
- Carefully remove the bottom trim.

## Step 8



- Locate the 8 plastic snap-ins that hold the diffuser attached to the bottom board of the lamp.
- These snap-ins are strongly attaching the diffuser to the bottom board and we may have to break one or two of them in order to separate the diffuser.

## Step 9



- Cut one or two plastic snap-ins with a box-cutter.
- This will ease to free the other plastic snap-ins without any other risk of damage. Philips must have designed this so that the lamp can not be serviced.

## Step 10



- With a small straight screwdriver free the remaining 6 snaps by simultaneously press each snap and pull the diffuser off the bottom board.



## Step 11



- Smoothly pull off the main board from the diffuser.
- On the figure note the snap-ins in green that remain intact from the previous step and the snap-in in orange that was cut.

## Step 12



- With a pair of scissors cut the plastic clip fastener that ties the two wires of the bulb socket.
- This step is necessary to loose the main board.



## Step 13



- Now we can go ahead with the fixing of the electronic board.

To reassemble your device, follow these instructions in reverse order.