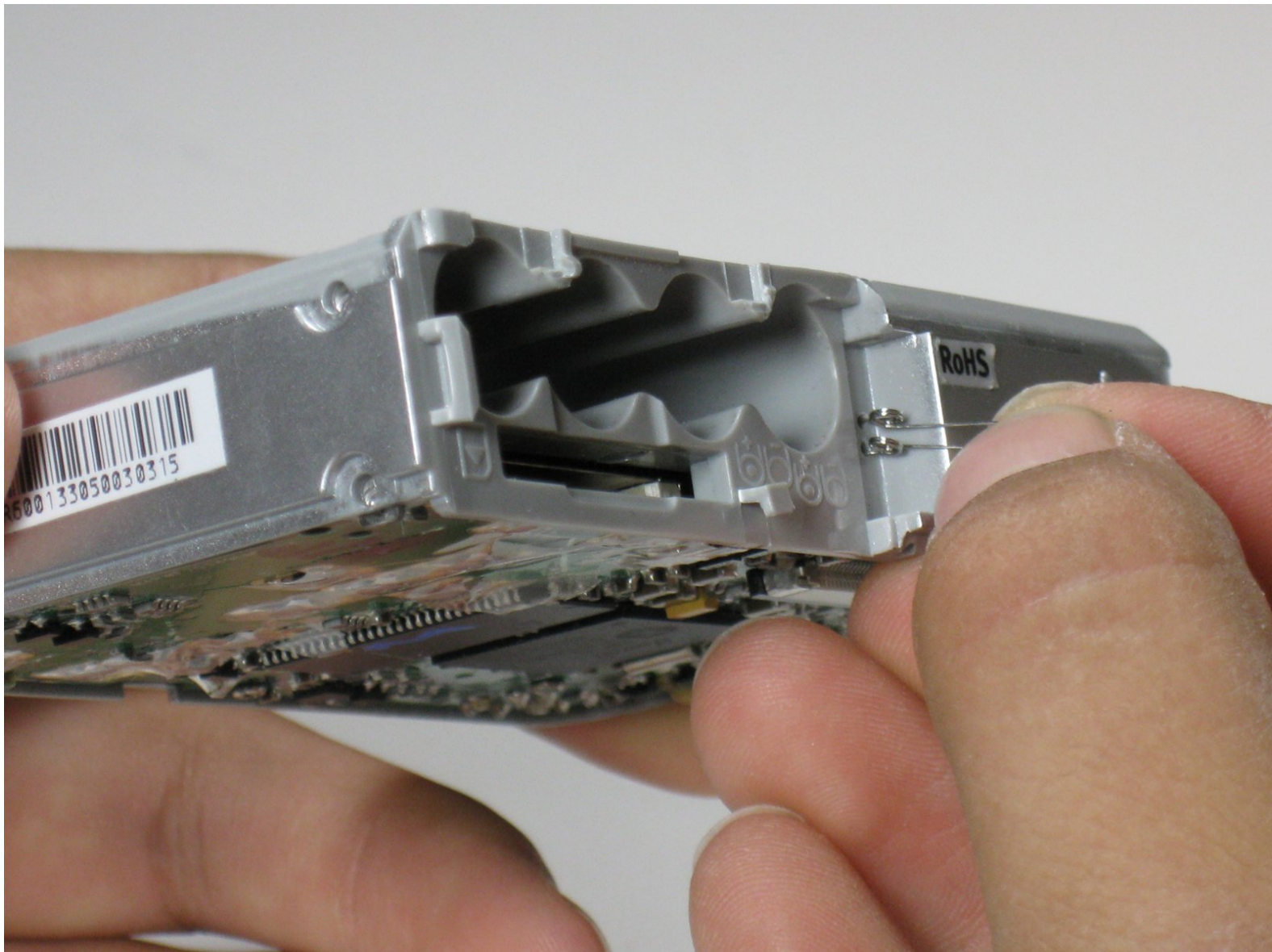




Disassembling Polaroid a520 Battery cover

Replacing the spring loaded battery cover

Written By: Dani



INTRODUCTION

How to replace the spring loaded battery cover or the spring.



TOOLS:

- [Phillips #00 Screwdriver](#) (1)
 - [Spudger](#) (1)
-

Step 1 — Disassembling Polaroid a520 Battery



- Locate the battery cover on the bottom of the camera.

Step 2



- Place your thumb on the battery cover and push towards the arrow. The cover will release and pop open.

Step 3



- Remove the batteries from the camera.

Step 4 — Disassembling Polaroid a520 Casing



- Unscrew and remove four (3mm) screws on the right side of the camera. This will release the front and back casings.

Step 5



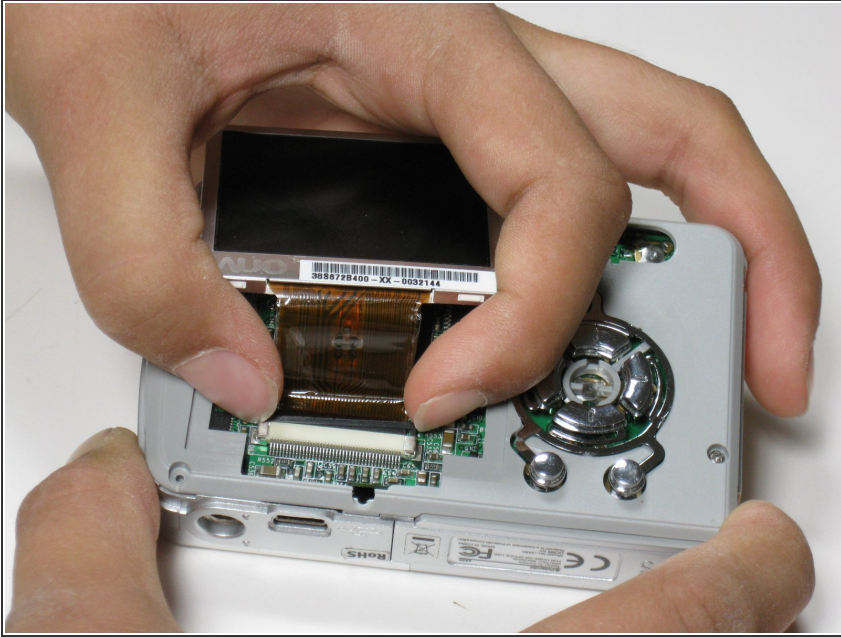
- Use your nail or a flat object to pry up the edge of the front casing. Push the casing up and back.
- Repeat this step for the back casing.

Step 6 — Disassembling Polaroid a520 LCD Screen



- Locate the black plastic strip under the screen above the white plastic strip.

Step 7



- Pull up both sides of the black piece up about a mm.
- ⚠ The black plastic piece is not meant to come all the way off, just enough to release the screen.
- Once the piece is lifted carefully slide the screen out of the slot.

Step 8 — Disassembling Polaroid a520 Battery cover



- Unscrew the four (6mm) screws from the inner casing.

Step 9



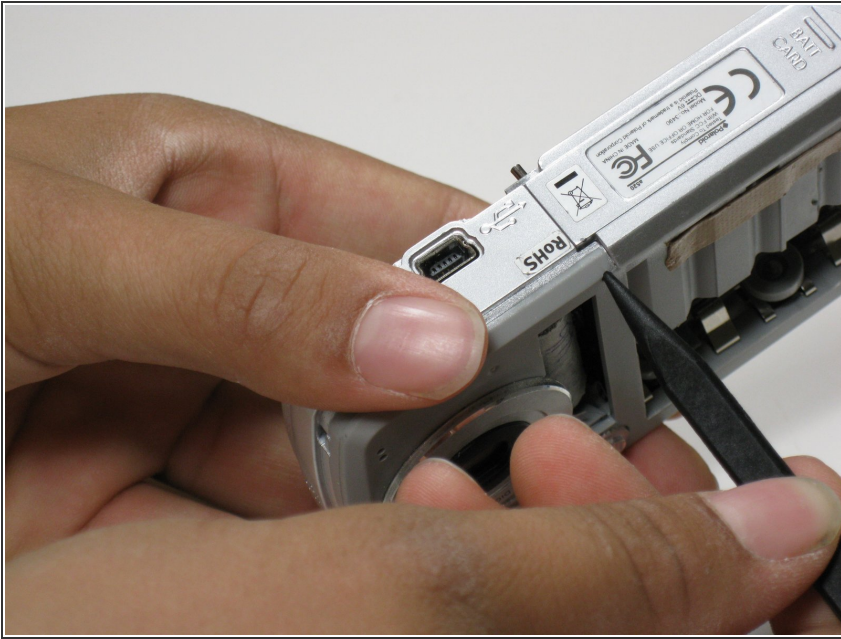
- Pull the inner casing off.
- If all the screws are out the casing will come off easily. If it doesn't check to make sure all the screws are completely out of the plastic.

Step 10



- Locate the push pin near the bottom of the camera.

Step 11



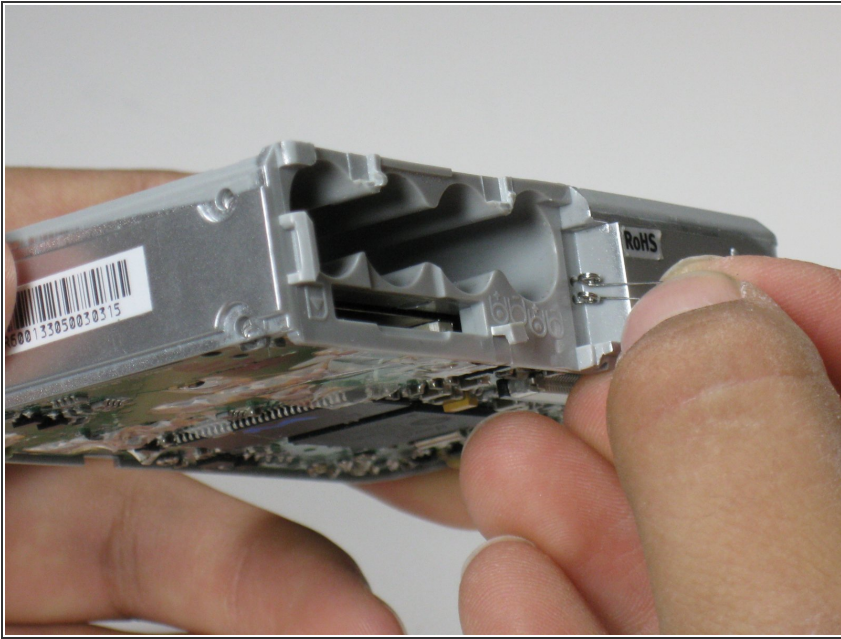
- Use the spudger to push the push-pin partly through.

Step 12



- From the other side pull the pin all the way out. The battery cover will fall off.

Step 13



- The spring can just be pulled out of the holes.

To reassemble your device, follow these instructions in reverse order.