



Disassembling Polaroid a520 Lens

Removing the Lens from the camera for replacement.

Written By: Dani





TOOLS:

- [Phillips #00 Screwdriver](#) (1)
 - [Spudger](#) (1)
-

Step 1 — Disassembling Polaroid a520 Battery



- Locate the battery cover on the bottom of the camera.

Step 2



- Place your thumb on the battery cover and push towards the arrow. The cover will release and pop open.

Step 3



- Remove the batteries from the camera.

Step 4 — Disassembling Polaroid a520 Casing



- Unscrew and remove four (3mm) screws on the right side of the camera. This will release the front and back casings.

Step 5



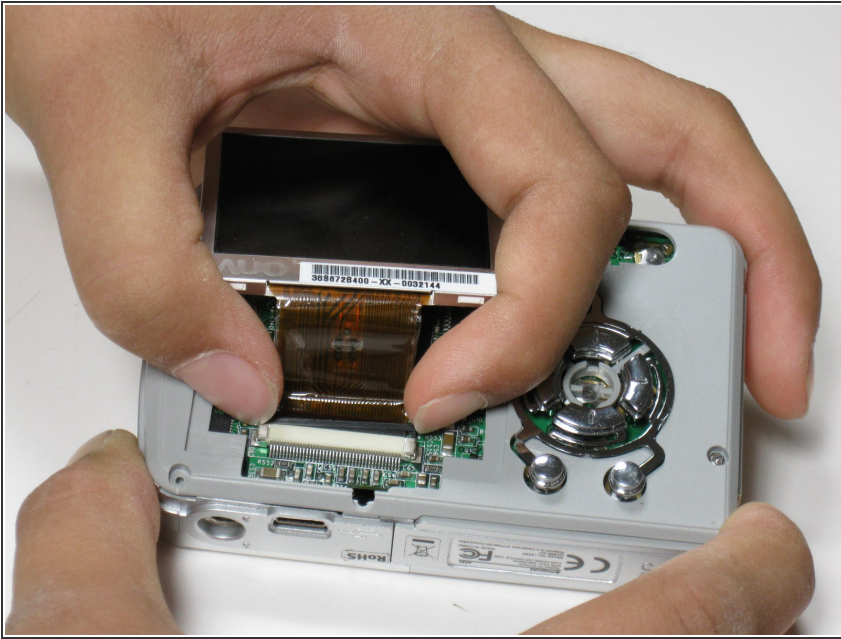
- Use your nail or a flat object to pry up the edge of the front casing. Push the casing up and back.
- Repeat this step for the back casing.

Step 6 — Disassembling Polaroid a520 LCD Screen



- Locate the black plastic strip under the screen above the white plastic strip.

Step 7



- Pull up both sides of the black piece up about a mm.
- ⚠ The black plastic piece is not meant to come all the way off, just enough to release the screen.
- Once the piece is lifted carefully slide the screen out of the slot.

Step 8 — Logic Board



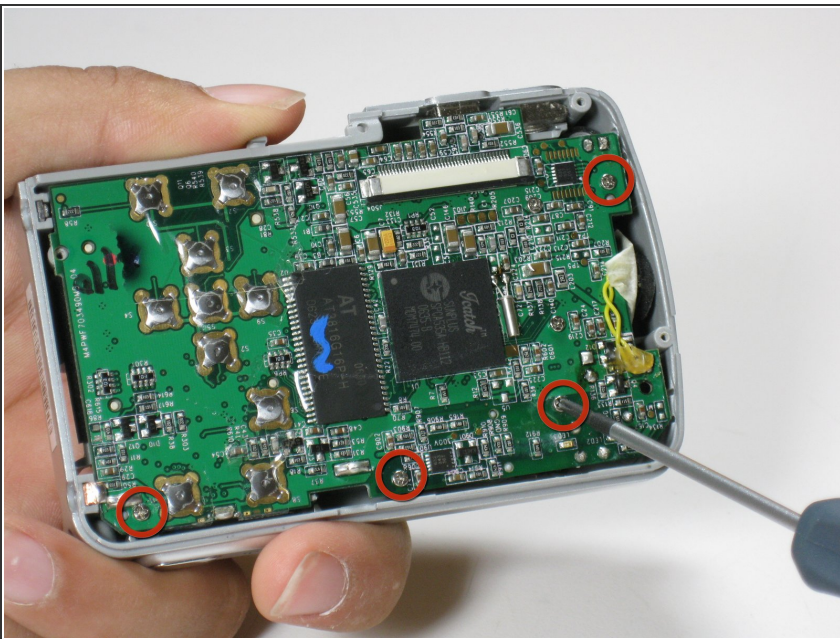
- Unscrew and remove the four (6 mm) screws on the inside casing.

Step 9



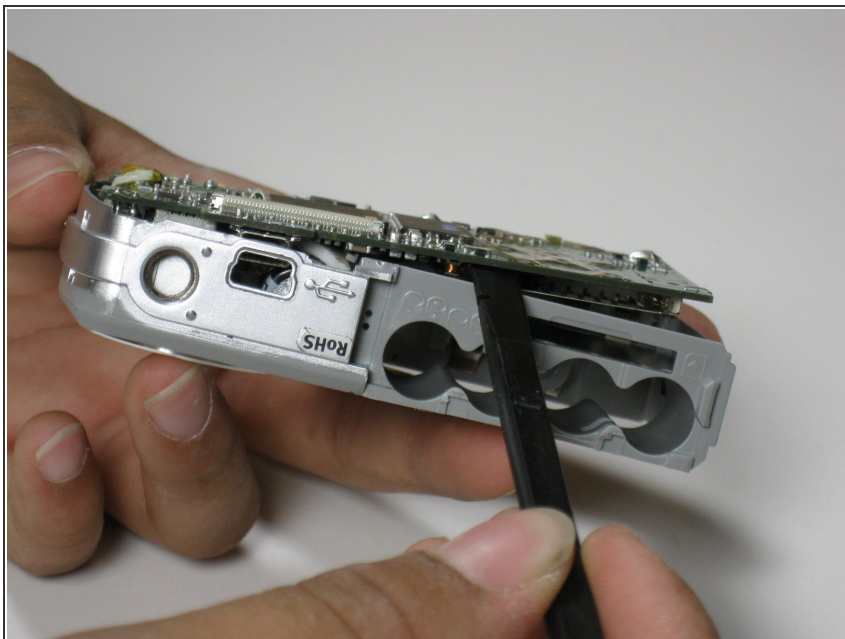
- Pull the inner casing off of the camera.

Step 10



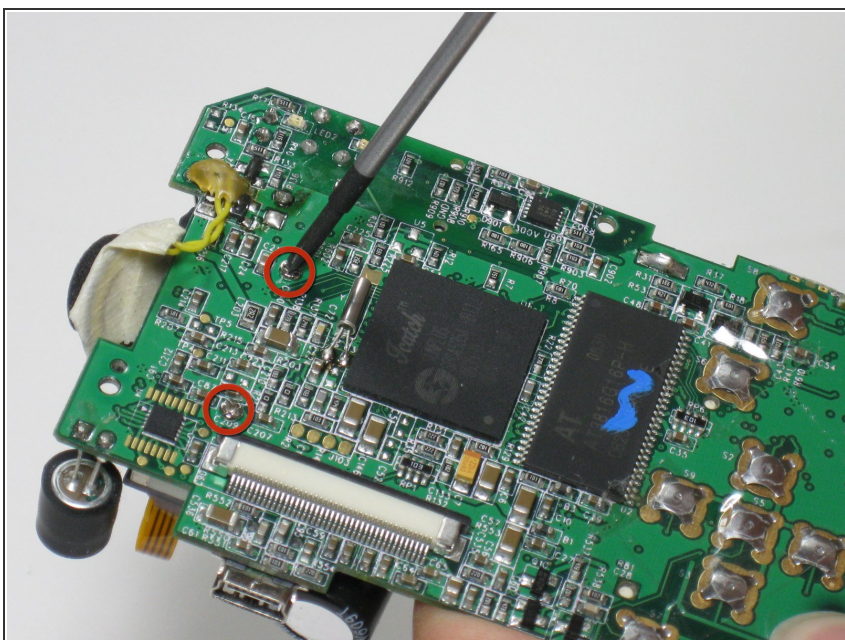
- Unscrew and remove the four (4mm) screws from the logic board.

Step 11



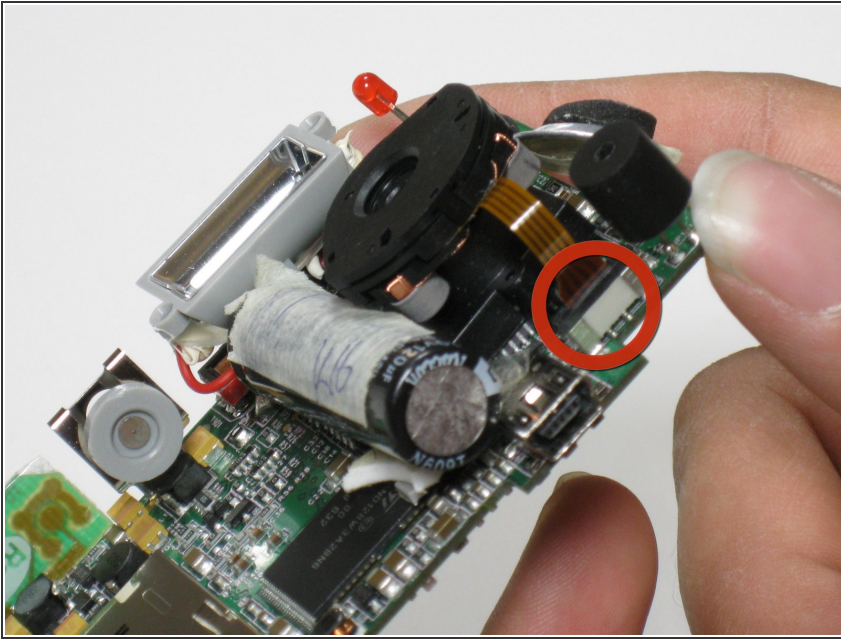
- Use a spudger to pry up all four sides of the logic board and slide it out of the camera.

Step 12 — Lens



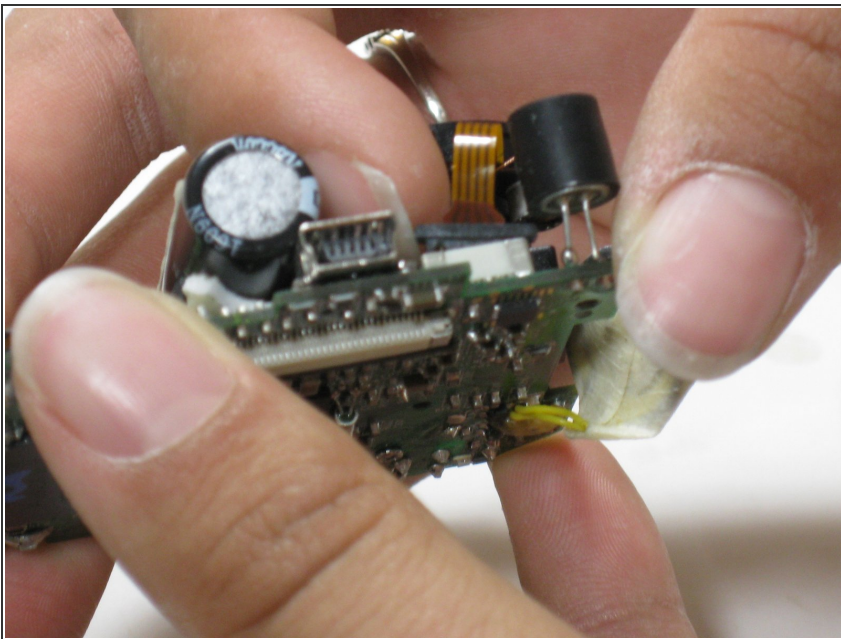
- Unscrew and remove the two (5mm) screws from the logic board to the far left.

Step 13



- Locate the black plastic piece behind the lens.

Step 14



- Similar to the LCD screen, pull the black piece up about a mm and it will release the lens.
- ⚠ The piece will not come all the way off; only enough to release the lens.
- Once the black piece is lifted slide the ribbon out to release the lens.

To reassemble your device, follow these instructions in reverse order.