



# Disassembling RCA RCT6272W23 Case

Disassemble your device case

Written By: Stephen Radachy



# INTRODUCTION

In this guide, we will go through disassembling your device's case to access internal components

---

## TOOLS:

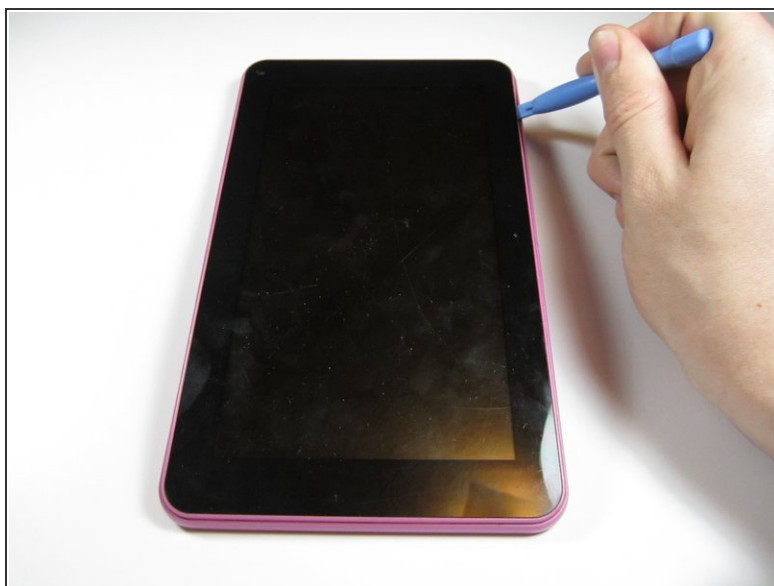
- [Phillips #00 Screwdriver](#) (1)
  - [iFixit Opening Tools](#) (1)
-

## Step 1 — Disassembling RCA RCT6272W23 Case



- Use a philips #00 screwdriver to unscrew both 4.064mm screws at the top of the device which hold it together.

## Step 2



- Press a plastic opening tool into the space between the front and back portions of the case.
- Run it along the perimeter of the device to unhook the many plastic tabs.
- Gently pull both sides apart.

⚠ The speaker is connected to the back cover so be careful when separating

To reassemble your device, follow these instructions in reverse order.