



# Disassembling Samsung Captivate Glide Phone

This guide shows how to quickly and easily replace any of the modular parts.

Written By: alcs99



---

## INTRODUCTION

The Samsung Captivate Glide is a fairly easy device to take apart and repair. Only a single screwdriver tip is needed and the parts are all modular and can be replaced easily. This device is similar to the Samsung Captivate, except the Samsung Captivate Glide, as the name implies has a slide-out QWERTY keyboard.



### TOOLS:

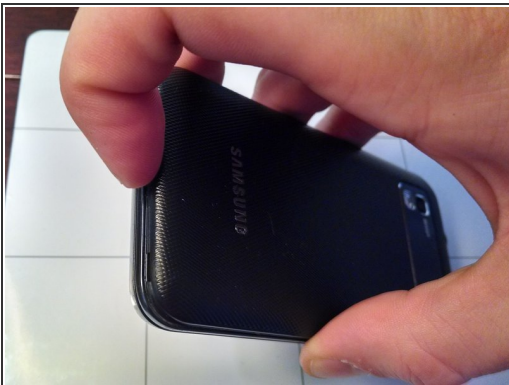
- [Phillips #00 Screwdriver](#) (1)
  - [Tweezers](#) (1)
  - [iFixit Opening Tools](#) (1)
-

## Step 1 — Phone



- The Samsung Captivate Glide is fairly easy to take apart and replace any of the modular internal components

## Step 2 — Battery Removal



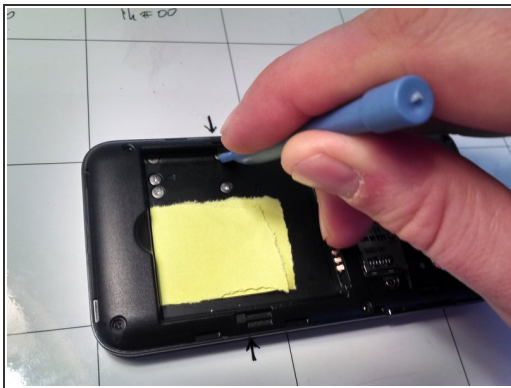
- First remove the battery

### Step 3 — Unscrewing the Back



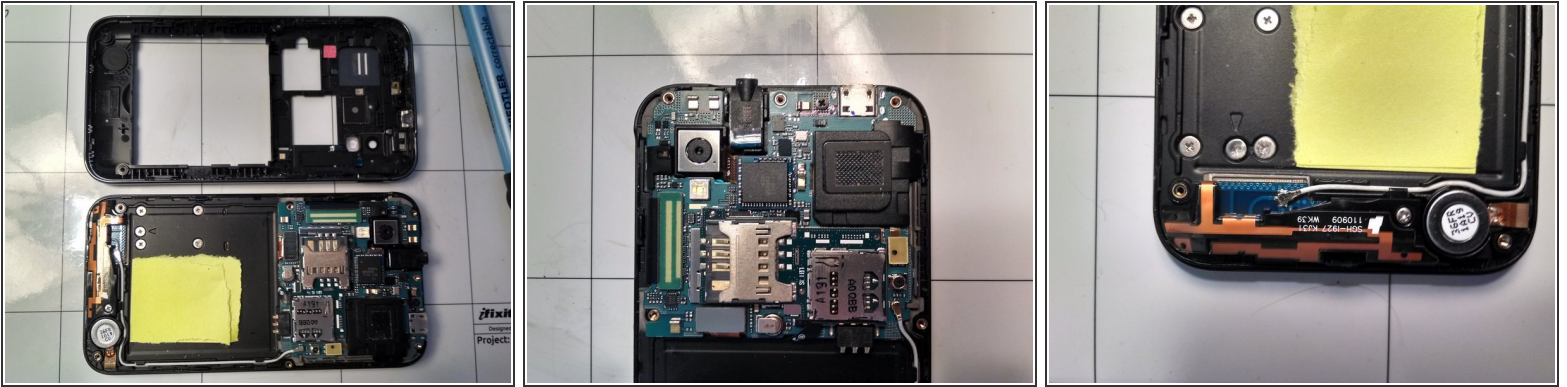
- Using the Phillips #00 screwdriver remove the seven screws indicated here.

### Step 4 — Prying Up The Back



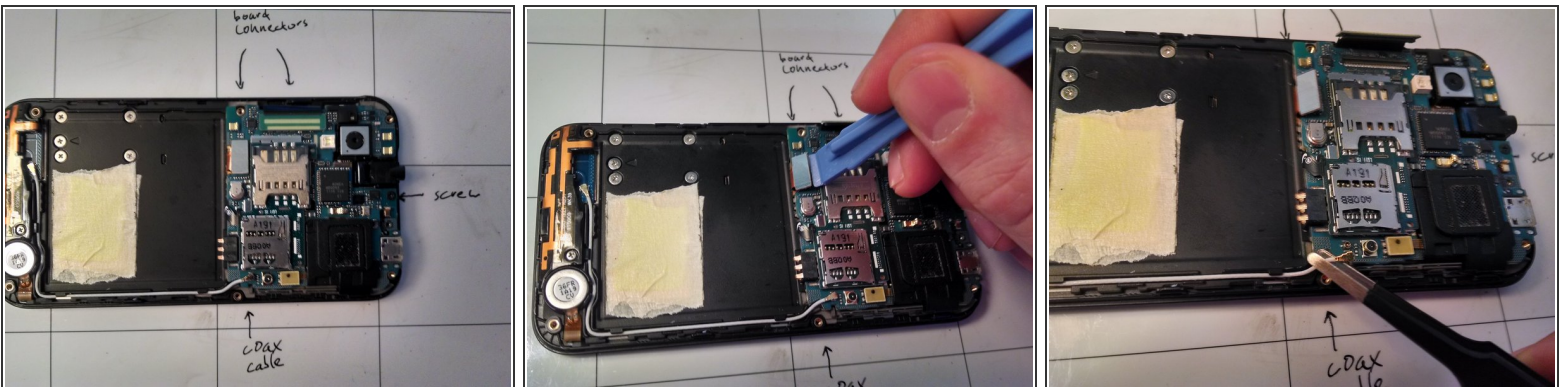
- Plastic molded clips hold the back panel in place and can be removed by first inserting the plastic opening tool into the indicated locations and prying up to pop the back up.
- Then using a wider lipped plastic opening tool pry the outside of the housing up and the back will remove cleanly.

## Step 5 — The Phone's Innards



- Shown here are internals of the phone.

## Step 6 — Motherboard Removal



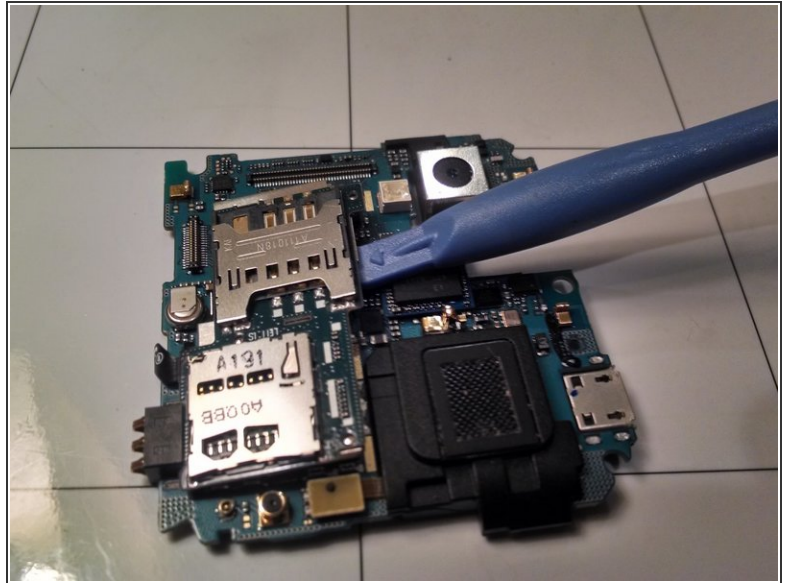
- In order to remove the motherboard remove a single screw with the phillips #00 screwdriver, gently pry up the two pop connectors on the board, and finally pull off the coaxial cable.

## Step 7 — Motherboard Removal



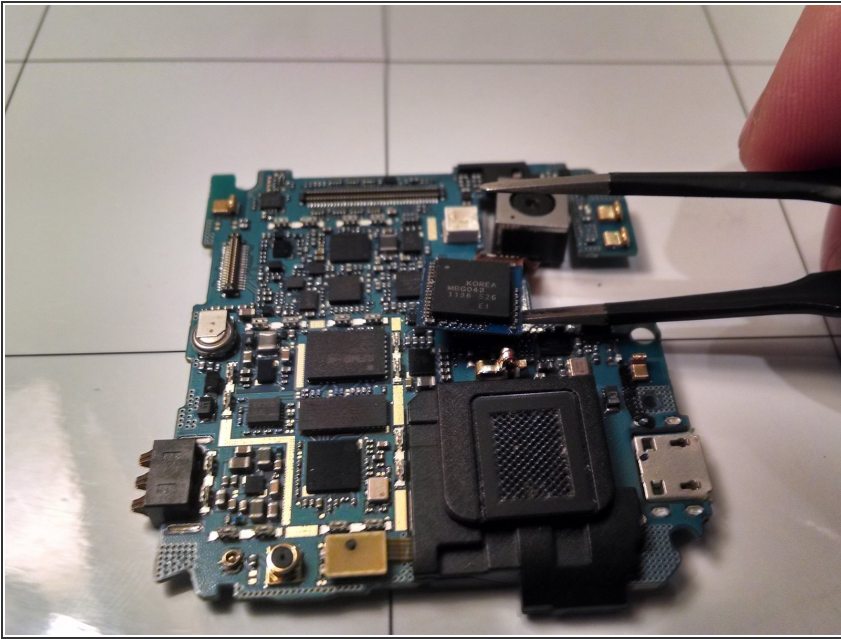
- The motherboard comes out of the phone body easily.

## Step 8 — Daughterboard Removal



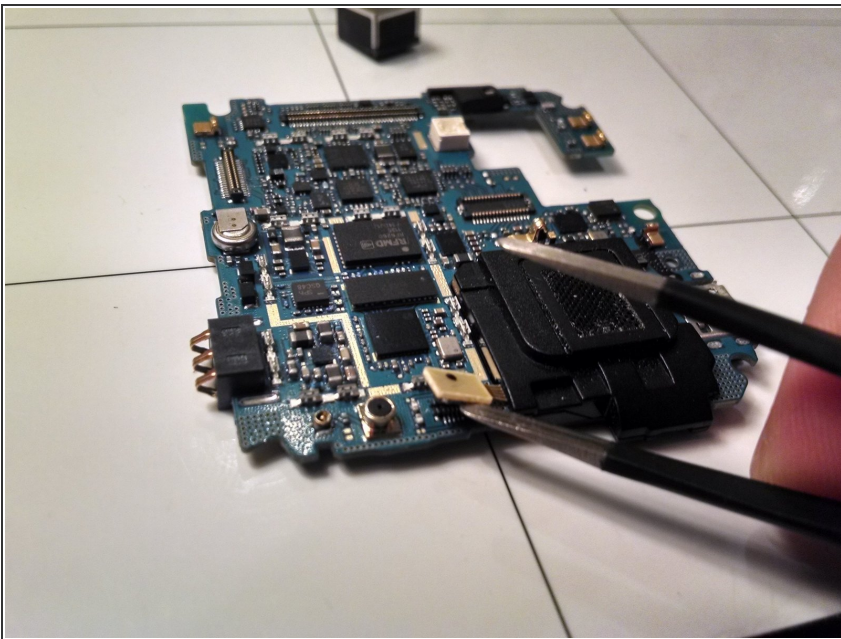
- The modular pieces of the motherboard are easily removed and replaced as needed.
- First the daughter board containing the SIM card and microSD card can be removed by disconnecting a single pop connector from the board and then gently pry the daughter board up and it will come loose. It is held down to the motherboard by the stamped metal board level shielding cages.

## Step 9 — Camera Removal



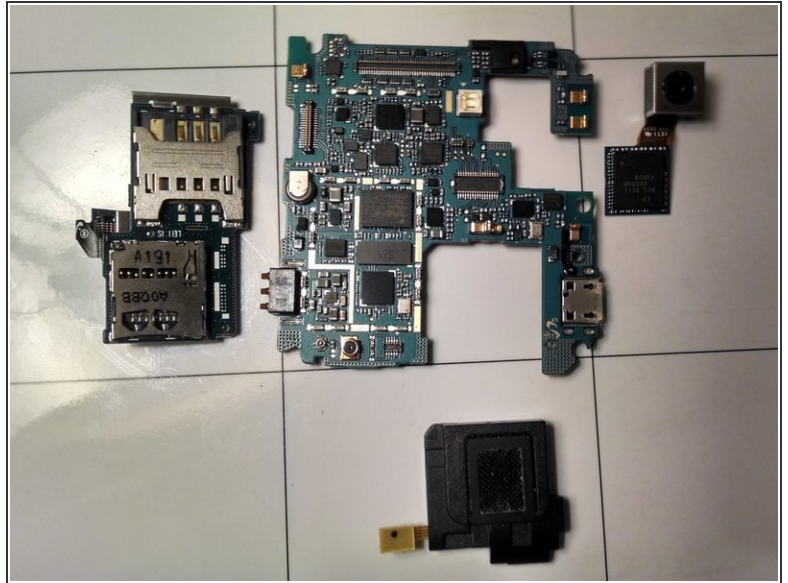
- The camera can be easily removed from the motherboard by pulling up on the board pop connector.

## Step 10 — Speaker Removal



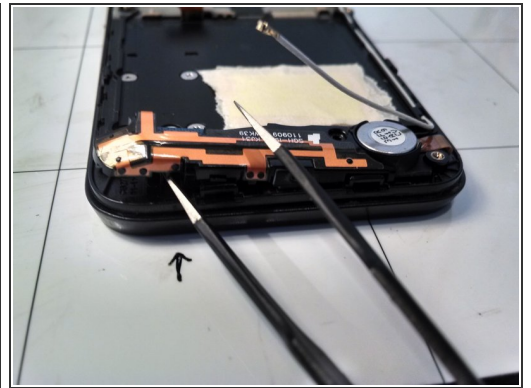
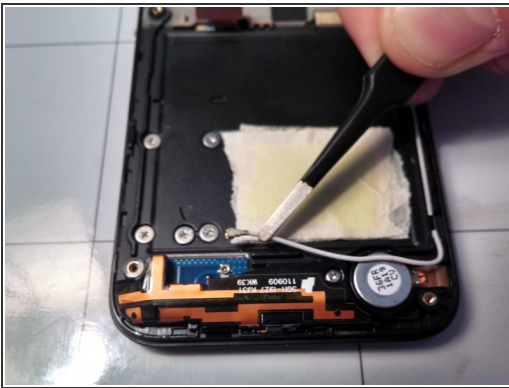
- The speaker is also easily removed by pulling up on the pop connector.

## Step 11 — The Disassembled Motherboard



- Shown here are all the pieces of the motherboard.

## Step 12 — Antenna Module Removal



- The antenna module can be removed by disconnecting the coaxial cable and a single phillips #00 screw.
- The antenna module can be prying upward at the location indicated.

## Step 13 — Antenna Module



- Shown here is the antenna module.

## Step 14 — Base and Screen



- The screen and base are shown here.

To reassemble your device, follow these instructions in reverse order.