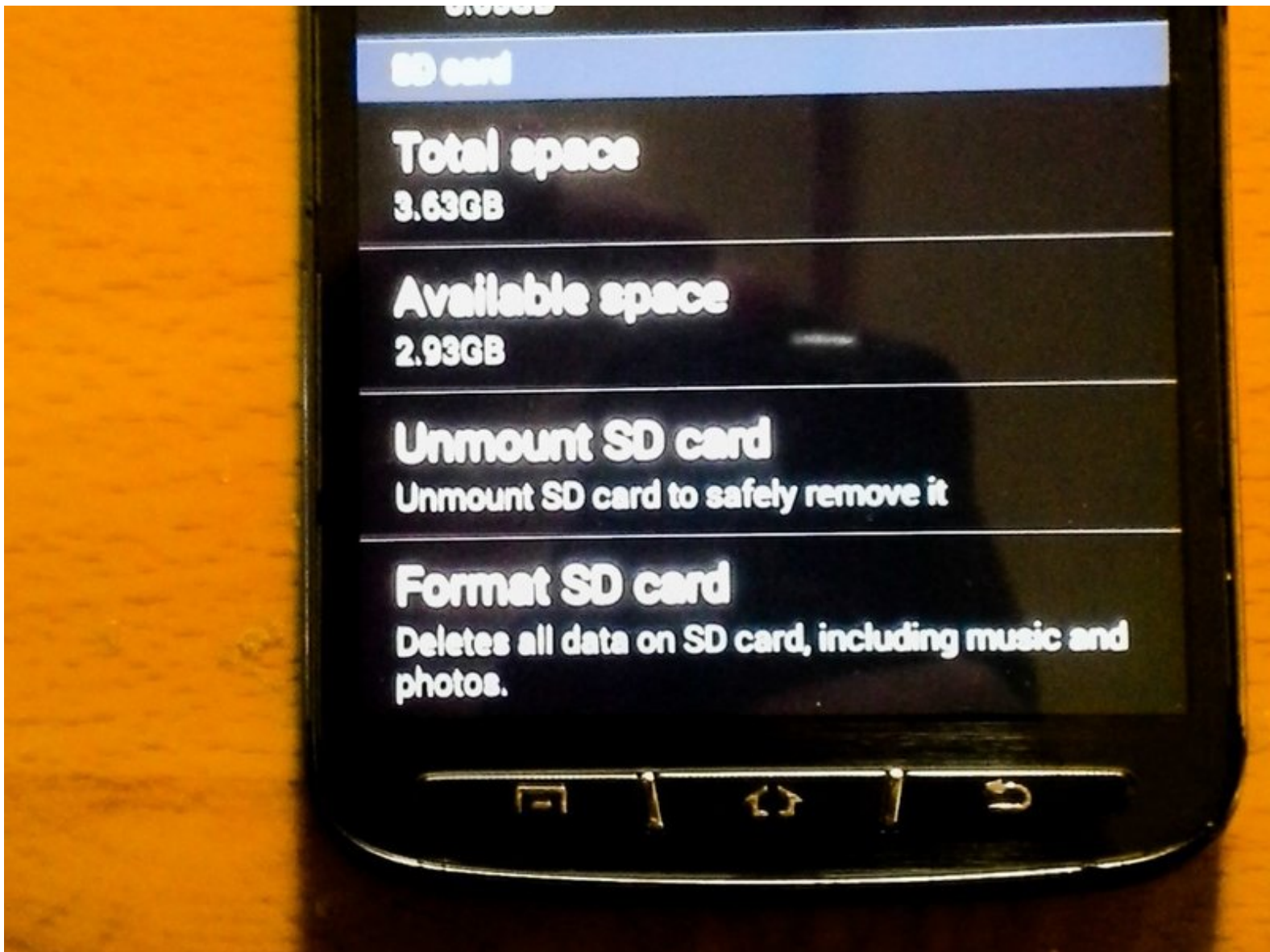




Disassembling Samsung Galaxy S4 Active

In this guide I will show you how to COMPLETELY disassemble your S4 Active. So that if you are ever making any repairs, you won't unintentionally damage your phone.

Written By: Tucker Cunningham



INTRODUCTION

While disassembling my S4 Active to replace my rear camera, I accidentally broke my mid-frame. (broken mid-frame = no longer water resistant) This is due to the fact that I couldn't find a complete disassembly guide for the Samsung Galaxy S4 Active to show me the proper way to remove it. I've got new parts coming in the mail. So while I wait, I figured I would make this guide so that no one else has to damage their phone!



TOOLS:

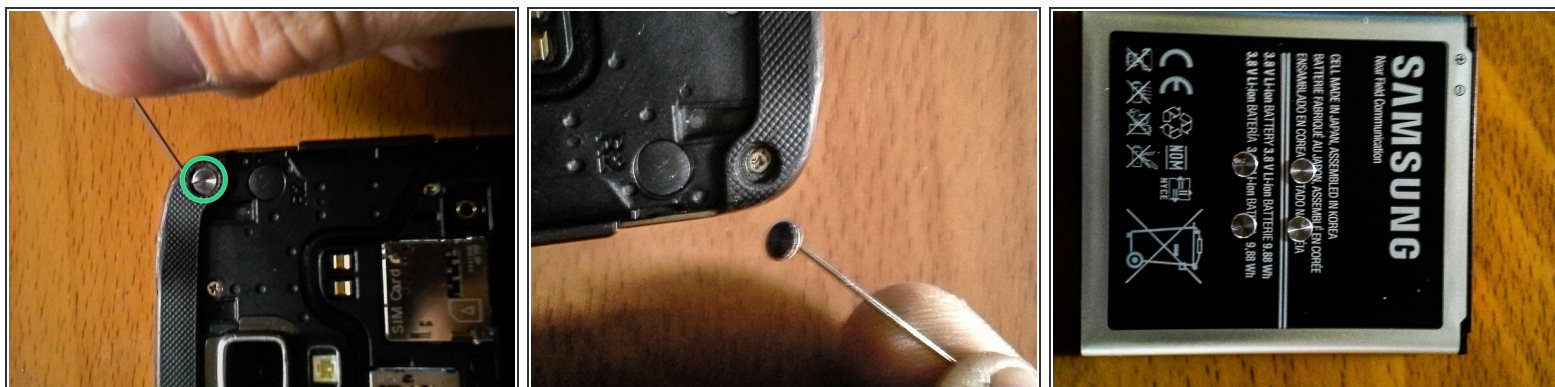
- [Phillips #00 Screwdriver](#) (1)
 - [Spudger](#) (1)
 - [iFixit Opening Tools](#) (1)
 - [Magnetic Project Mat](#) (1)
 - [Tweezers](#) (1)
 - [Phillips #0 Screwdriver](#) (1)
 - [Flathead 3/32" or 2.5 mm Screwdriver](#) (1)
-

Step 1 — Disassembling Samsung Galaxy S4 Active



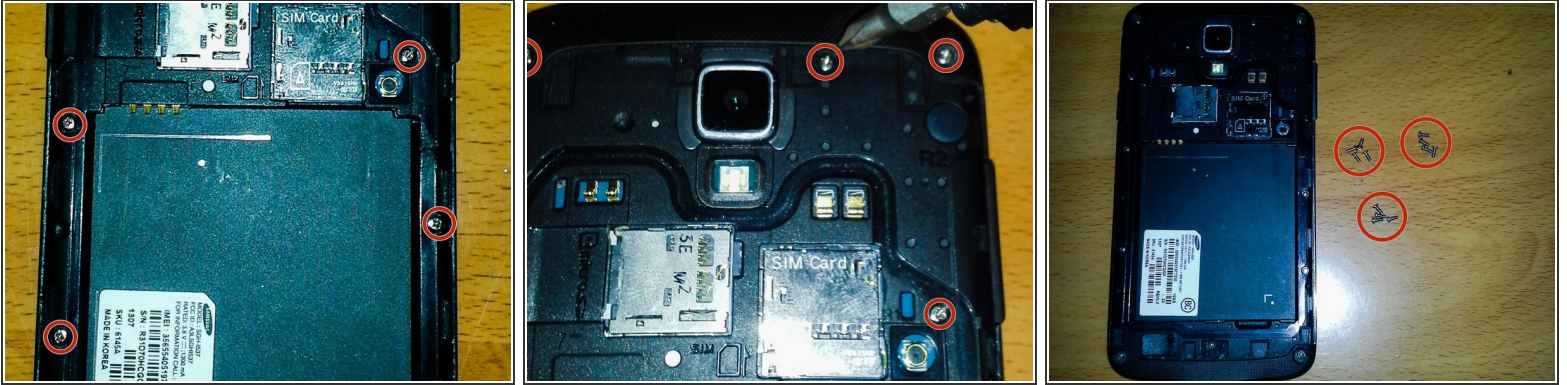
- First of all if you have a micro SD card you need to unmount it.
- Now you need to power off your device and then remove the back casing.
- Your next step is to remove the battery, SIM card, and your microSD.

Step 2 — Make all hardware accessible.



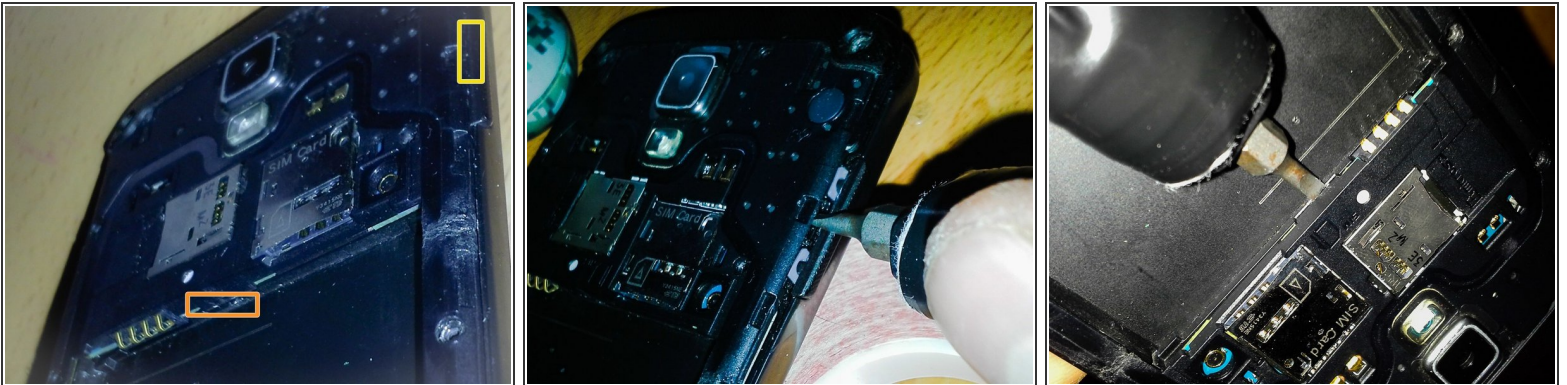
- Now you have to remove 12 screws from the mid frame. But first you must remove the 4 metal circles from the corners of your device.
- I found that a sewing needle is the easiest way to remove just about everything but the screws in your phone.
- I like to stick the 4 metal circles to my battery once removed so I don't lose them.

Step 3 — Remove screws



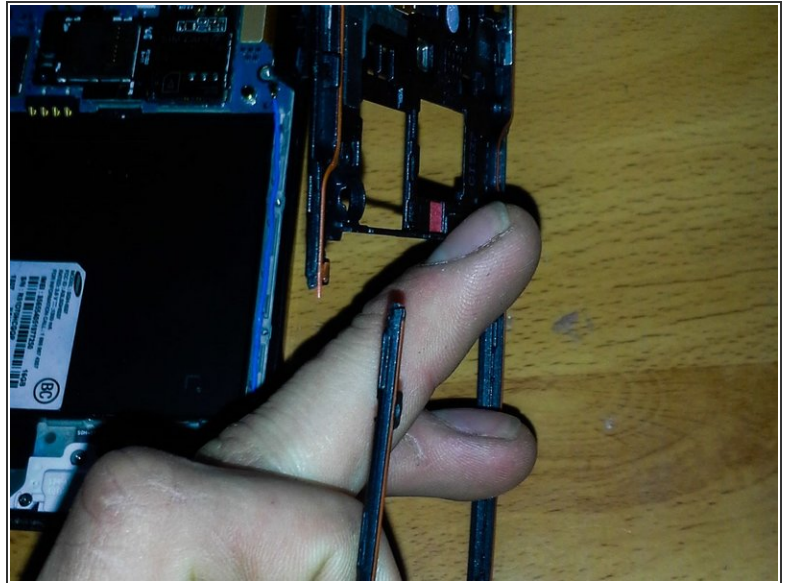
- Now take out the 12 midframe screws.
- Be sure to put them in some sort of container because they are impossible to find when they hit the floor!

Step 4 — Security clips




- ⚠ Be very cautious when removing the midframe. There are 2 hidden security clips on it. (My midframe broke because I did not know about the security clips when I went to pull my midframe off)
- One of the clips is between your volume button and the midframe. Gently push a flathead screwdriver or a thin blade in between the frame and the volume button.
- The other clip is directly in between the SIM slot and the 4 prong battery terminal. You will see a gap at the bottom of it, lightly pry it up to disengage the clip.

Step 5 — Remove midframe

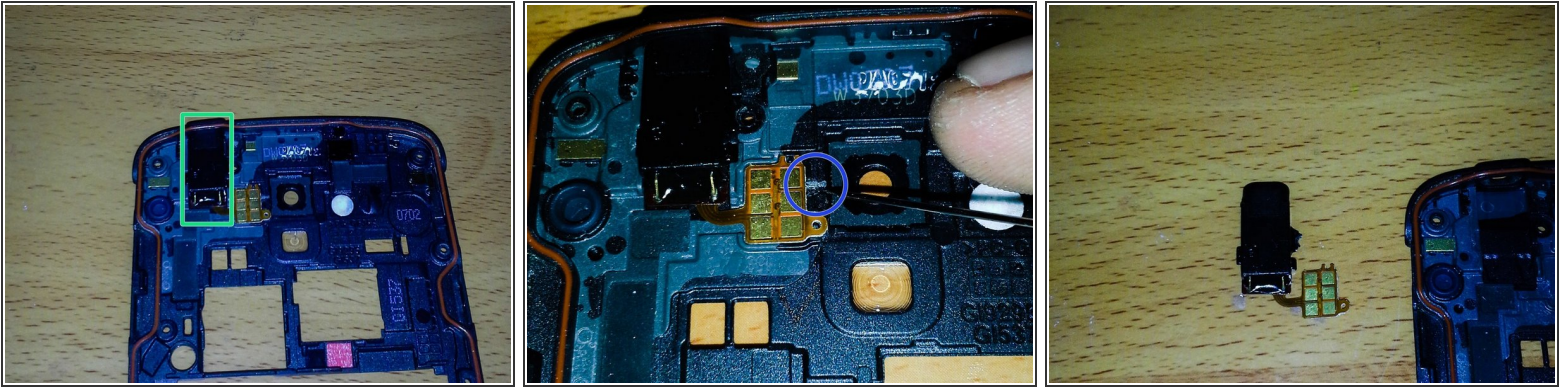


- As you pull the midframe off you will notice that your charging cover fell off the phone. No need to worry, it gets closed back in the phone during reassembly.

 This is what happens when you don't disengage the security clips

- Now you can set the main frame aside because you have one more thing to do to the midframe

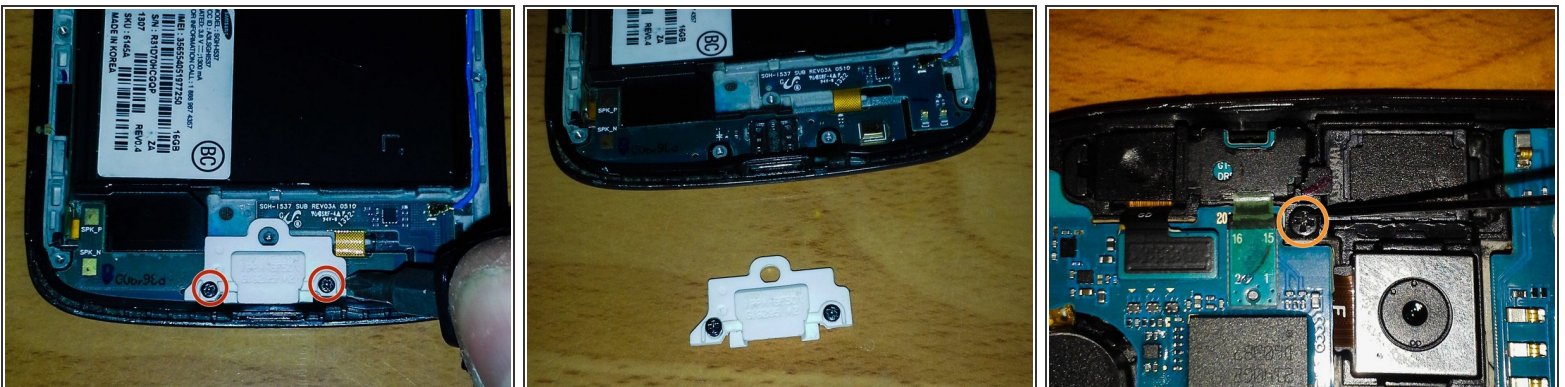
Step 6 — Headphone jack



- Unlike the standard Galaxy S4, the headphone jack on the S4 Active is attached to the midframe instead of the mainframe.
- All removable flex cables will have an access slot to get a tool (I use a sewing needle) underneath the adhesive and pry it up.
- Once this is done you can remove whatever component is attached to the flex cable. In this case it is the headphone jack.

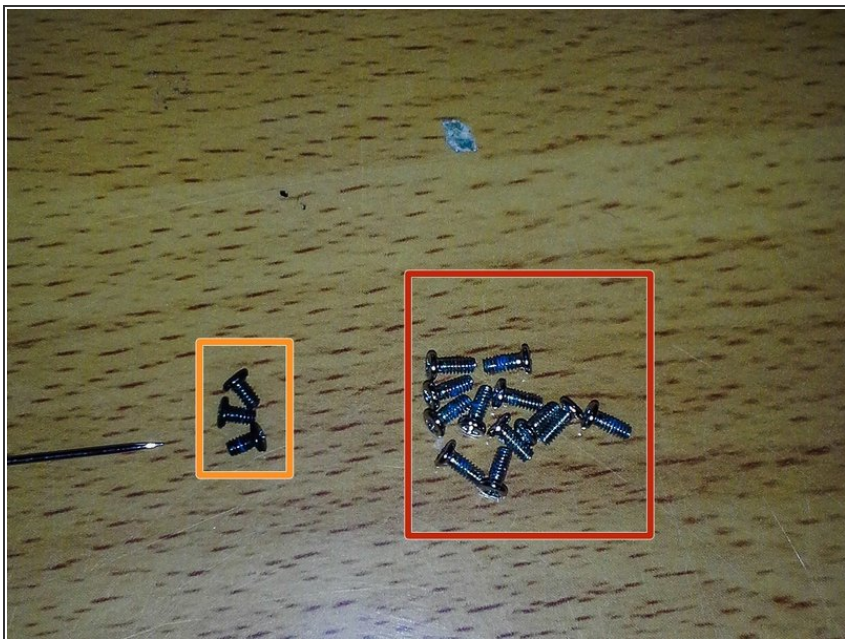
⚠ Always remember to be gentle with the flex cables to avoid rips and tears.

Step 7 — Daughterboard and Motherboard screws



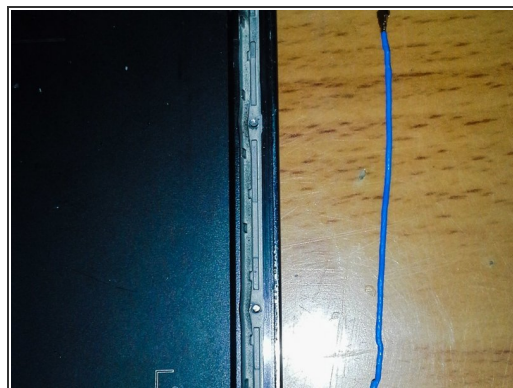
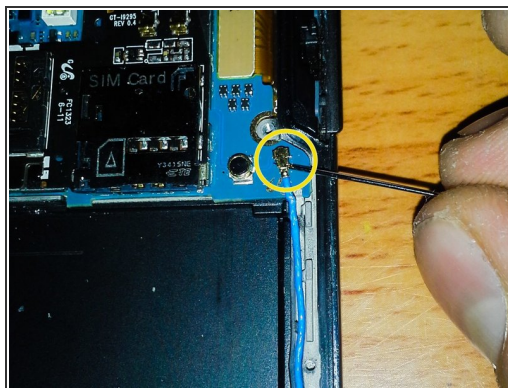
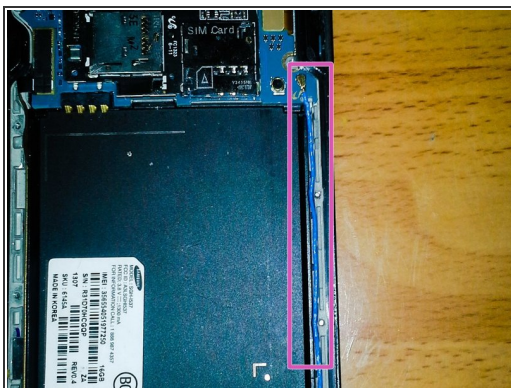
- There are 2 black screws anchoring down the daughterboard/USB charging dock. They are located in the white USB protector
- The final screw in your S4 Active is at the top of the motherboard, on the left side of the earpiece and rear facing camera.

Step 8 — All 15!



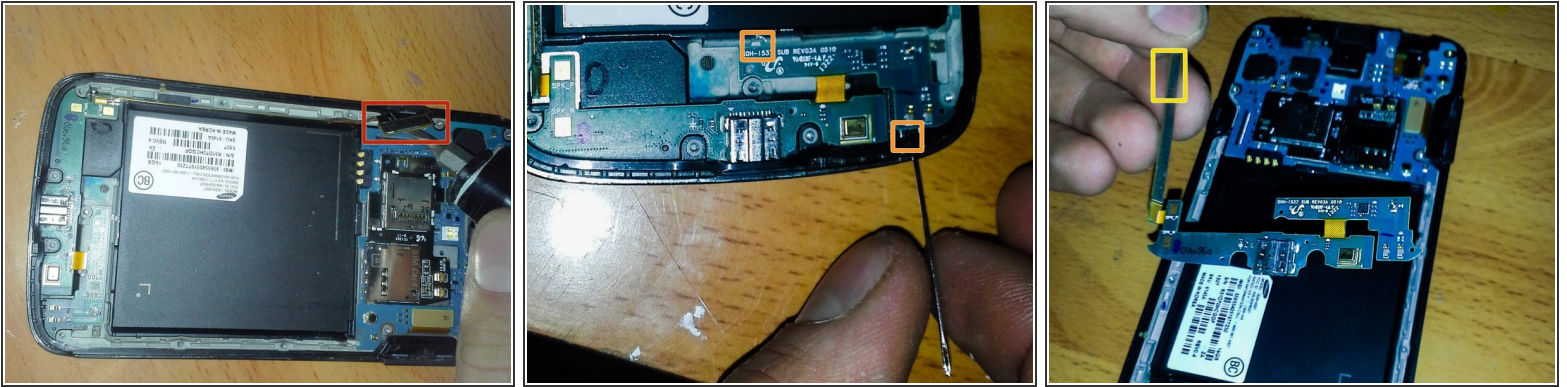
- There is a total of 15 screws.
- 12 (stainless) Midframe screws.
- 3 (black) board screws.

Step 9 — Antenna



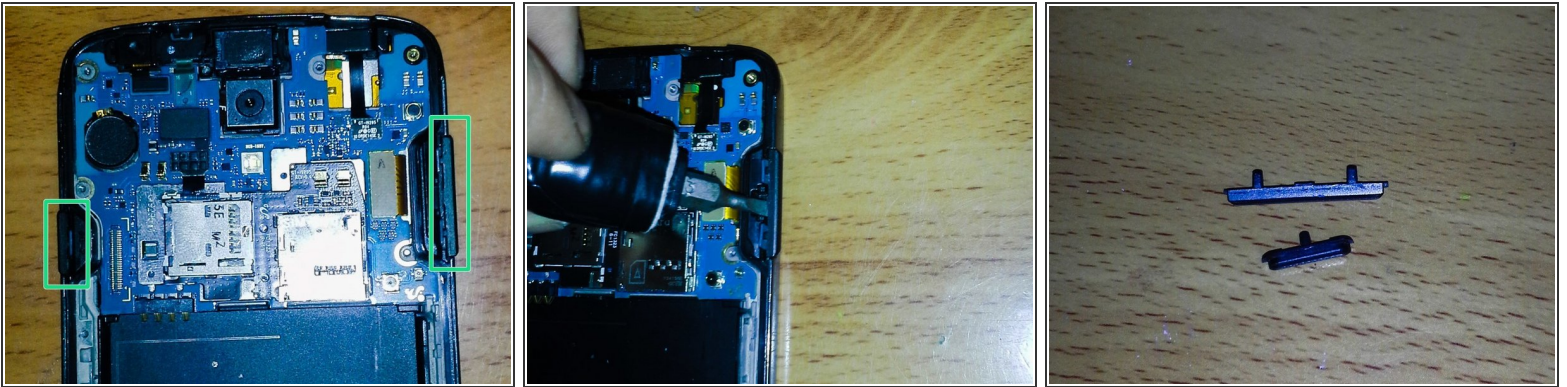
- The antenna runs from the motherboard down to the daughterboard.
- Disconnect both ends of the antenna and set it to the side

Step 10 — USB charging port/Daughterboard



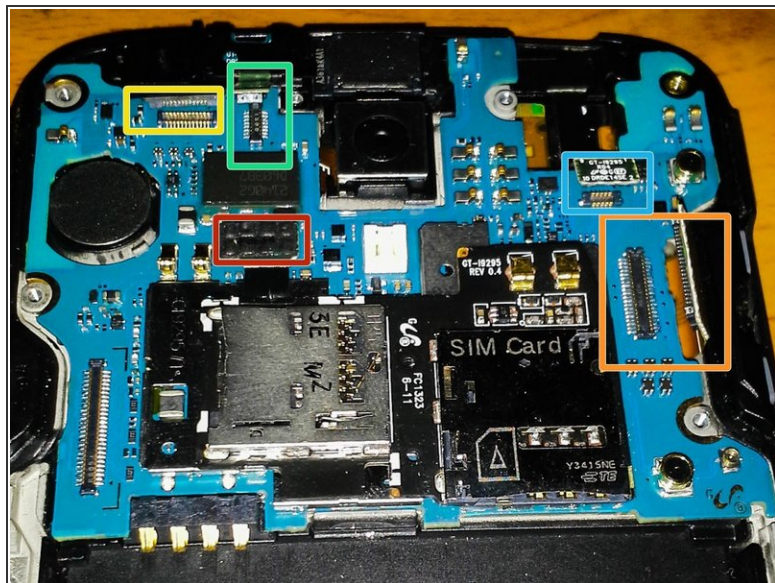
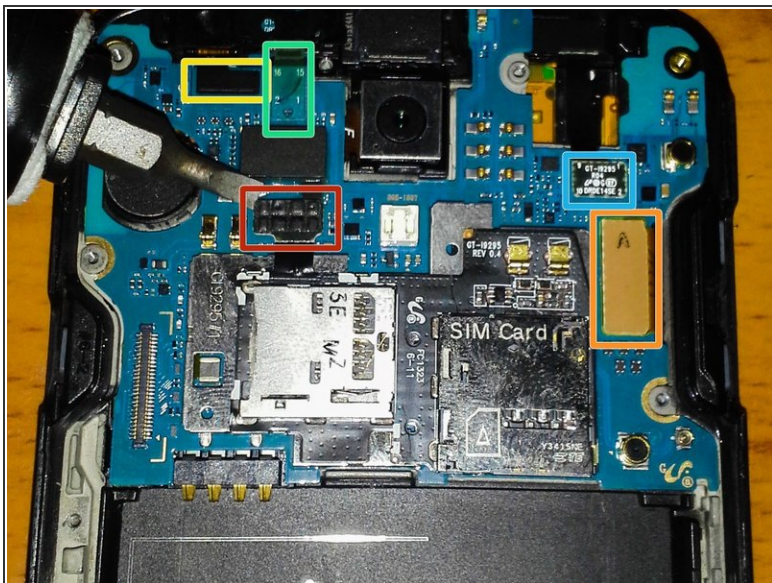
- Gently pry the flex cable connector from the motherboard.
- Find the 2 daughterboard access slots and pry the daughterboard from the phone.
- Grab the flex cable and pull the charging port and daughterboard out of the phone. (They are one piece and should come out without any resistance)

Step 11 — Power/volume buttons



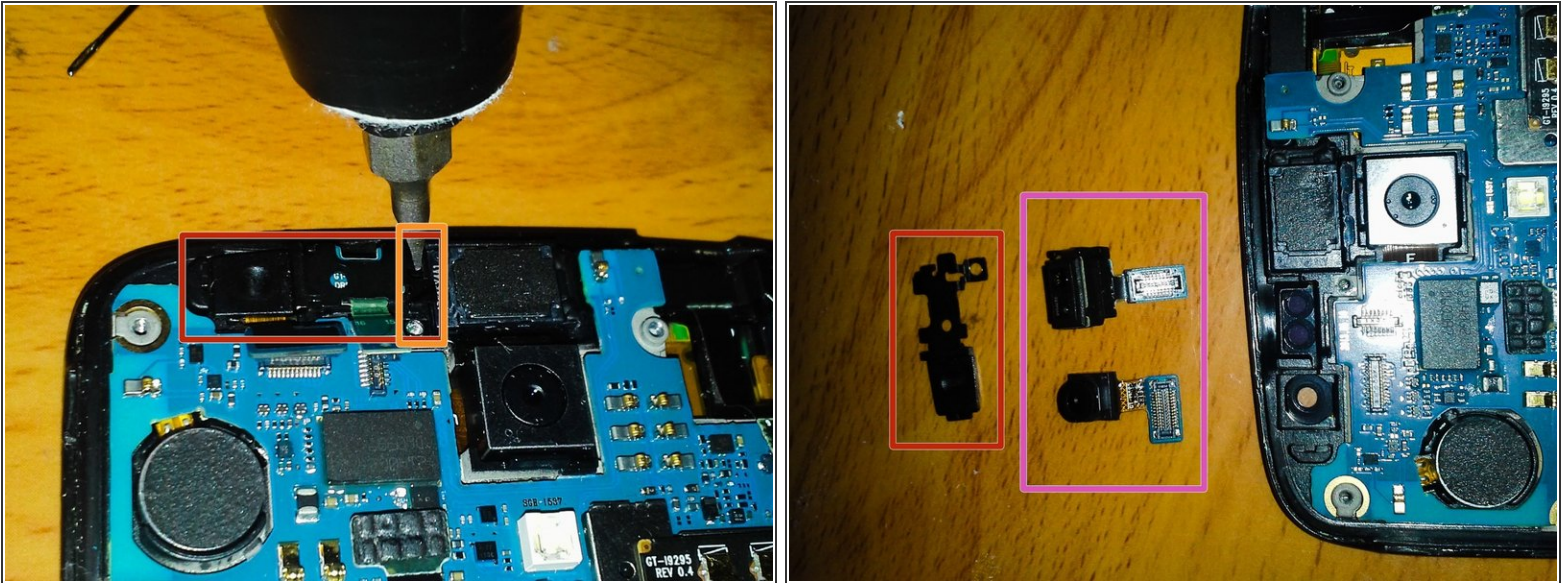
- These buttons come out fairly easily. Not so much going back in though.
- Just stick a pry tool behind the button and pop it out.

Step 12 — Free the mother!



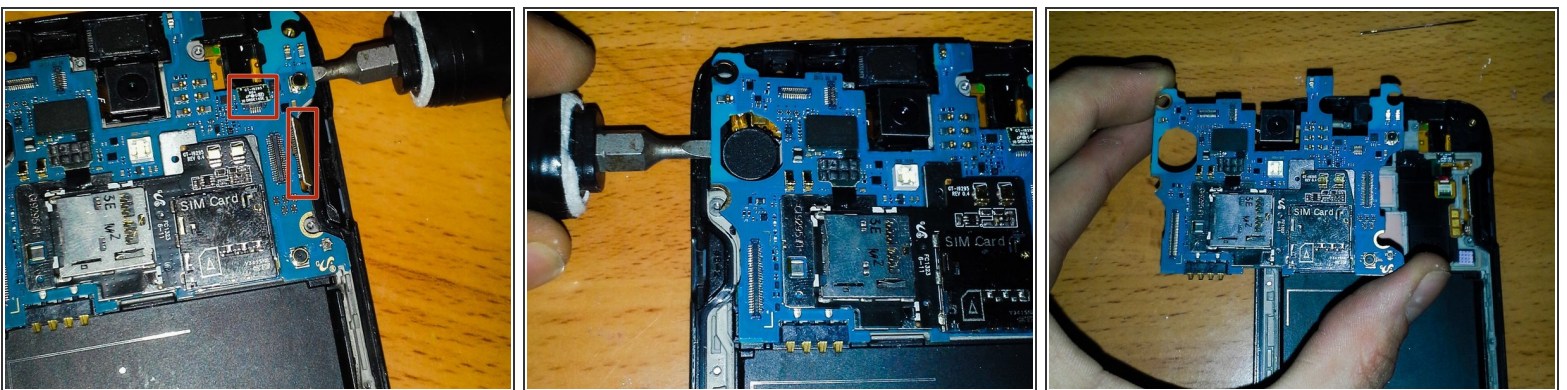
- Disconnect all cable connectors.
- SIM/SD Reader
- Digitizer
- Front Facing Camera
- Proximity Sensor
- LED Status Light/RGB Sensor Module

Step 13 — Front camera and proximity sensor



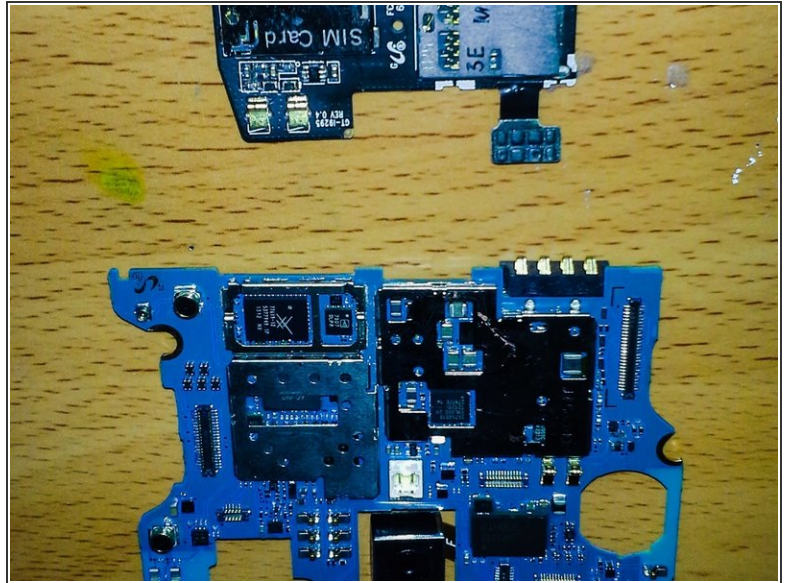
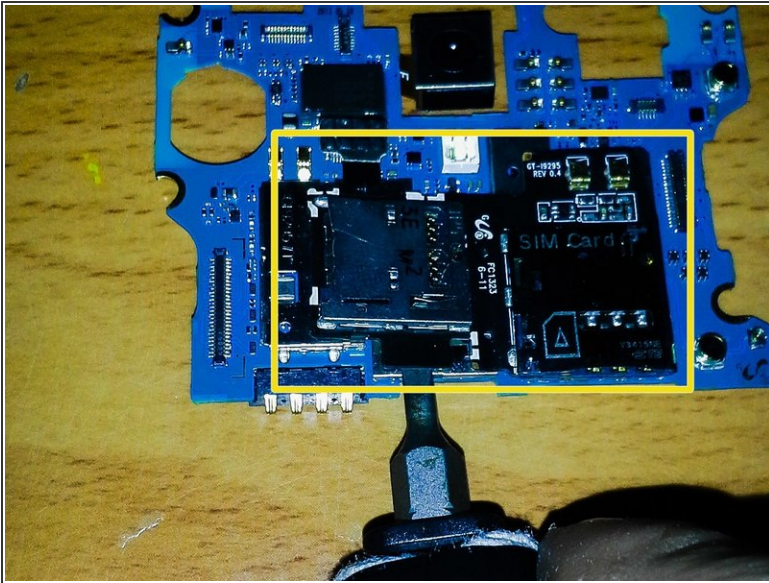
- There is a (black) metal bracket holding down the Front Facing Camera and Proximity Sensor.
- Pry it off from the right side.
- Remove Proximity Sensor and Front Facing Camera.

Step 14 — Motherboard



- One side at a time, GENTLY pry the motherboard from the phone.
 - Do NOT snag/hit any remaining flex cables with the Motherboard as you remove it.
- ⚠ Only touch the motherboard on its edges to prevent ESD damage. (Electrostatic Discharge) It could potentially fry your motherboard.

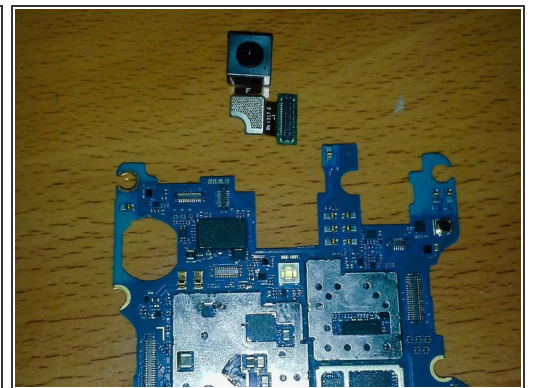
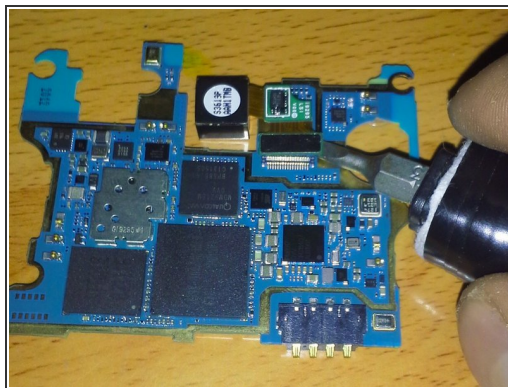
Step 15 — SIM/SD Reader



⚠ Only remove this if you are actually replacing it! It doesn't come off or go back on easily.

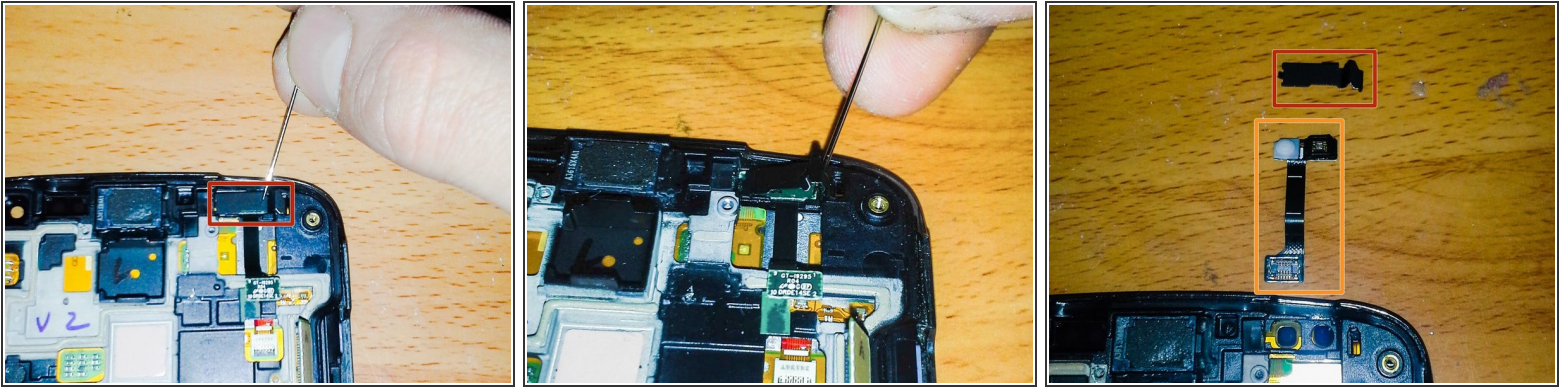
- My SIM Reader is broke but, it is attached to the Micro-SD so I have to replace the whole Unit.

Step 16 — Rear Facing Camera



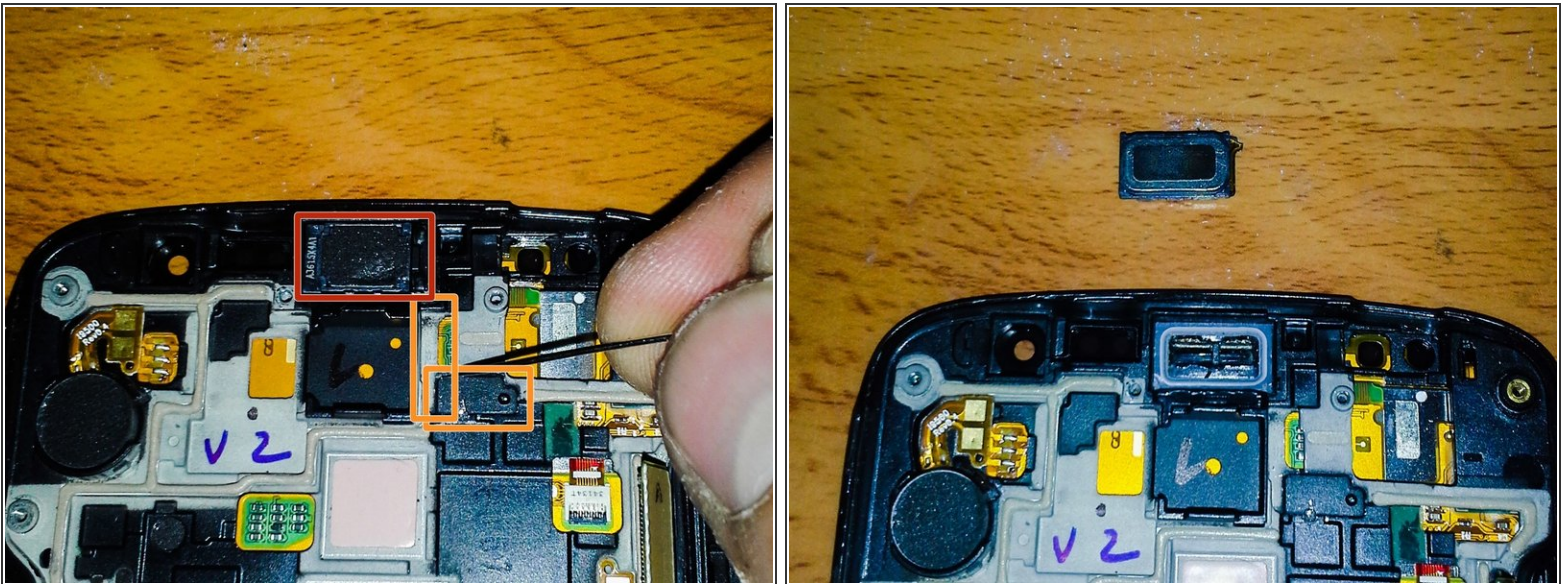
- Turn the motherboard over and disconnect flex cable connector.
- ⓘ Set the motherboard off to the side in a safe spot until you reassemble your phone.

Step 17 — LED STATUS LIGHT/RGB Sensor



- This component has a bracket holding it down as well, remove it the same way as the last one.
- Remove LED Status Light/RGB Sensor

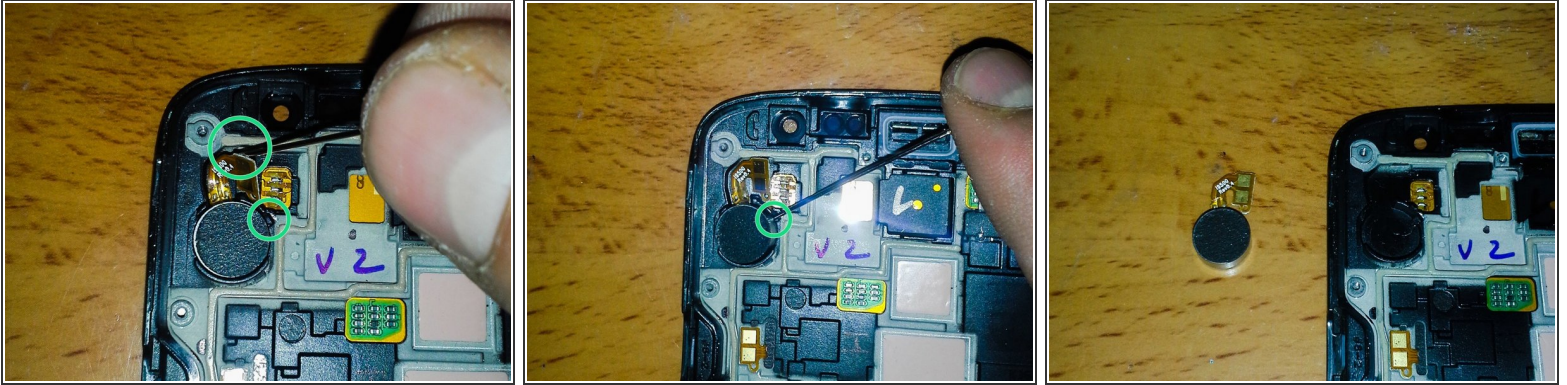
Step 18 — Earpiece Speaker



⚠ Broke my Earpiece Speaker. Ebay here I come!

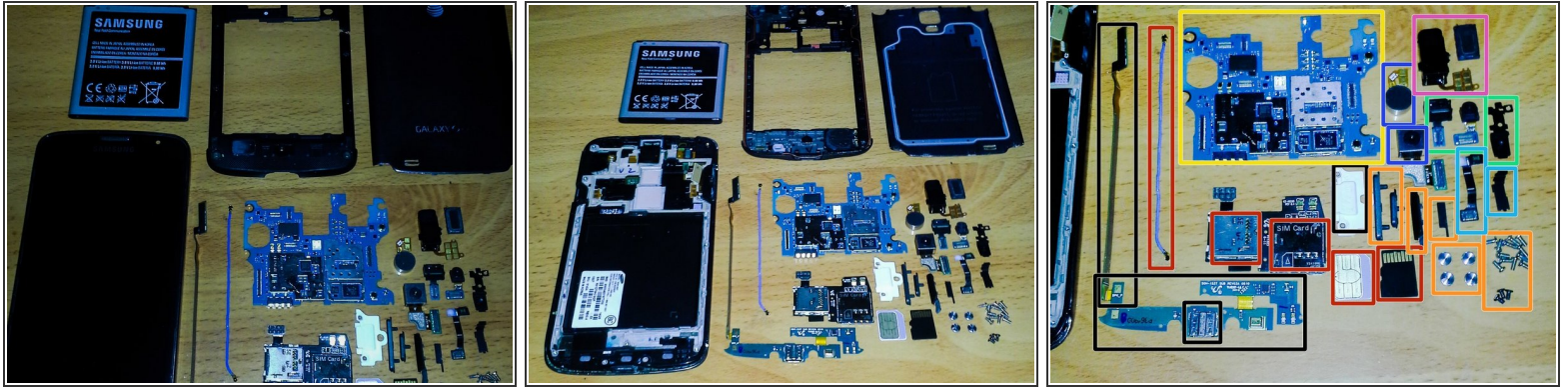
- Proof as to why you need to be careful with flex cables.
- I would recommend using 2 prying tools on your Earpiece flex cable. The adhesive has a really strong bond to the phone. (the orange highlights where the flex cable should be)

Step 19 — VIBRATOR



- Look for the access slot under the flex cable AND the vibrator. Lot of adhesive under the vibrator.
- Remove vibrator.

Step 20 — And thats a wrap!



- Daughterboard/USB Port/USB Protector/Flex Cable Connector.
- Antenna/SIM/SD Reader/SIM card/Micro-SD card.
- USB Water Cover/ Volume/Power Buttons/Screws and misc hardware
- Motherboard
- Front Facing Camera/Proximity Sensor/Bracket
- LED Status Light/RGB Sensor Module/Bracket
- Rear Facing Camera/Vibrator
- Headphone Jack/Earpiece Speaker

To reassemble your device, follow these instructions in reverse order.