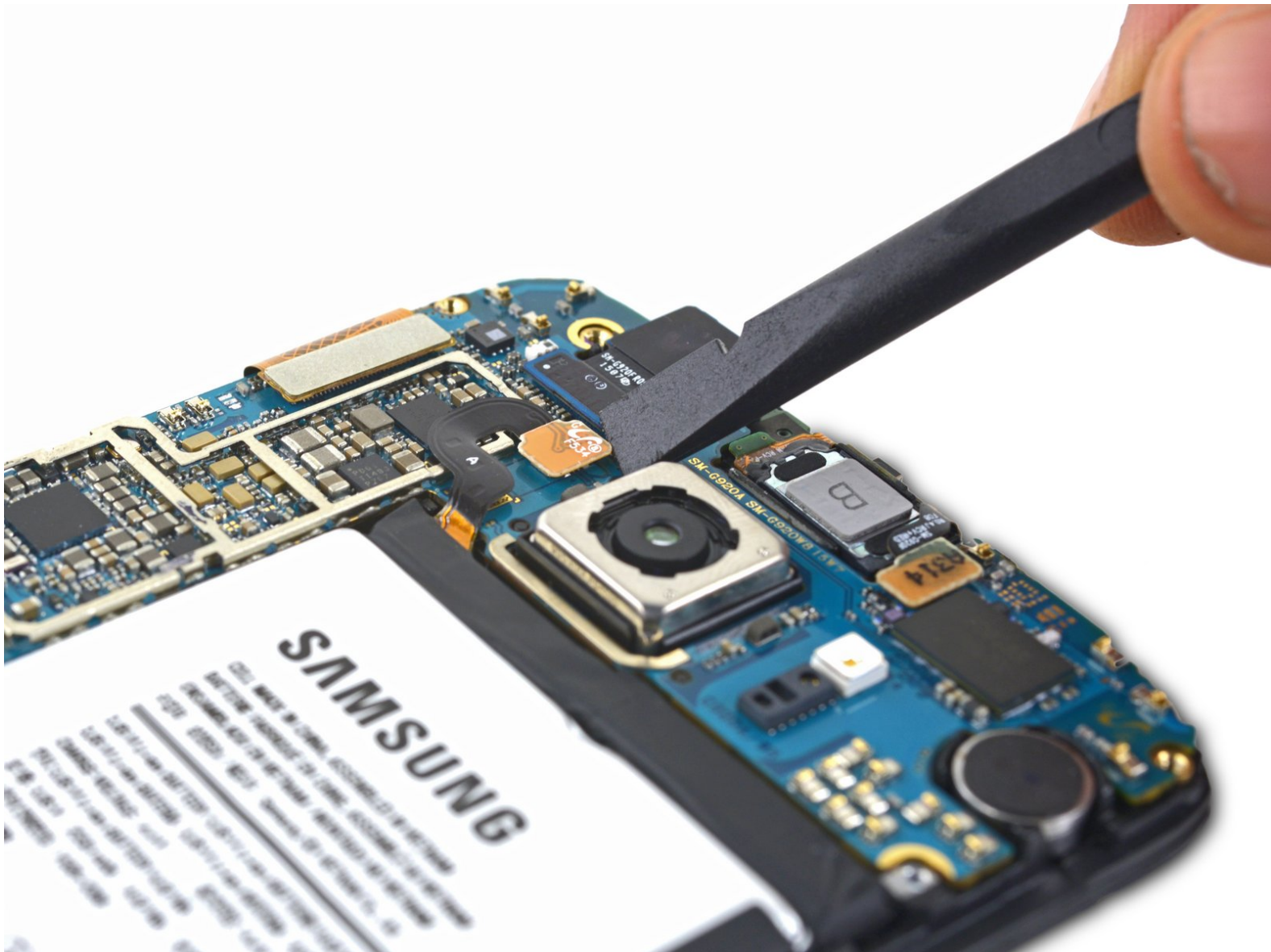




Disassembling Samsung Galaxy S6 Battery Connector

Prereq Only

Written By: Dante Mazzanti



INTRODUCTION

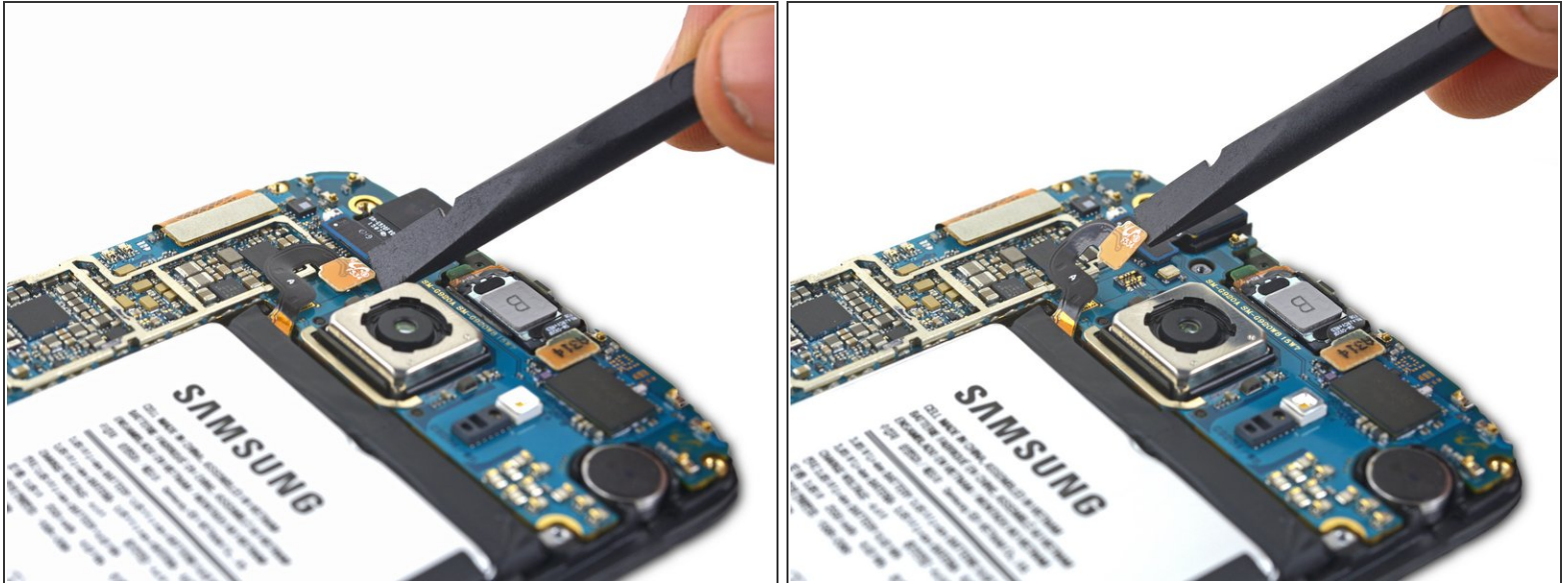
Prereq for disconnecting the battery.



TOOLS:

- [Spudger](#) (1)
-

Step 1 — Disassembling Samsung Galaxy S6 Battery Connector



- Use the flat end of the spudger to disconnect the battery connector from its socket on the motherboard.

To reassemble your device, follow these instructions in reverse order.