



Disassembling Samsung Galaxy s 2 (T-mobile) (T989) Phone

Quick Easy Guide that you can't hardly find anywhere else on the internet.

Written By: Emily



INTRODUCTION

Im going to teach you how to take apart your phone relatively easily.



TOOLS:

- [Flathead 3/32" or 2.5 mm Screwdriver](#) (2)
 - [Phillips #00 Screwdriver](#) (1)
-

Step 1 — Phone



- This is your phone!
- Take back case off.
- Take battery out.

Step 2



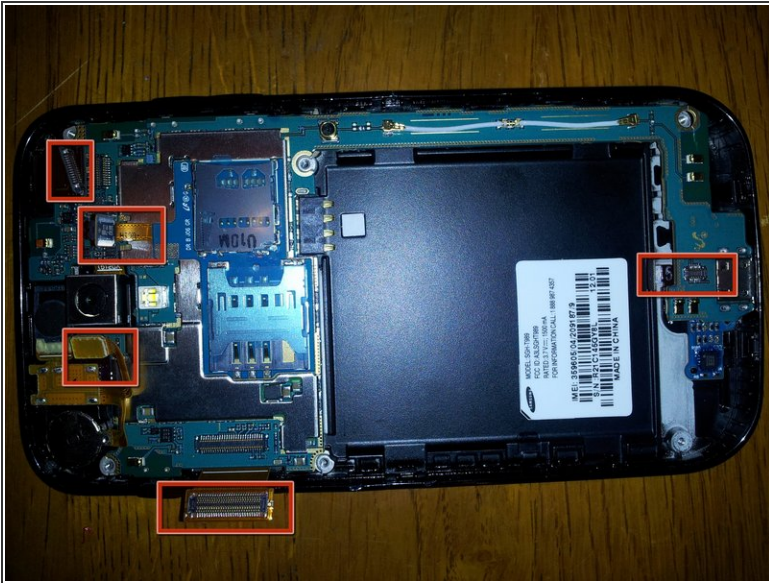
- Remove the 6 screws holding the back plate to the phones frame.
- PUT THEM IN A SAFE PLACE SO YOU DONT LOSE THEM!

Step 3



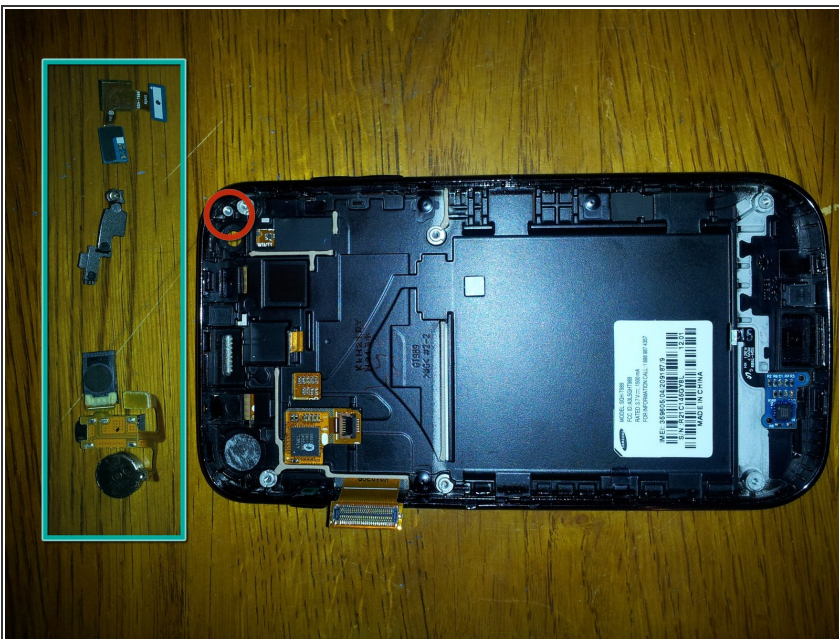
- Insert the Flat head screwdriver into the side of the phone and pry up the back plate.
- I used two flatheads and used one to hold the section i had pryed up until i could wedge the rest out.
- You do have to be careful with this step not to use too much force on the back plate, however it held up pretty well on mine.
- Once you have all the sides pryed loose the back plate should just pop right off!

Step 4



- Unlatch the 5 ribbon connectors. This will make the motherboard ready to be removed.
- Simply lift it out!

Step 5



- Unscrew the final screw up in the top right corner, holding the front facing camera in place
- Remove the headphone jack (plus attached components) and front facing camera
- They have sticky tape keeping them attached to the phone, so dont be afraid to pull!

Step 6



- This is everything i have instructed to take apart, to put back together, just reverse the steps
- Good Luck!

To reassemble your device, follow these instructions in reverse order.