



# Disassembling Samsung SPH-A760 Keyboard

Written By: doconnor



---

# INTRODUCTION

How to remove keyboard



## TOOLS:

- [Phillips #0 Screwdriver](#) (1)
  - [Spudger](#) (1)
  - [Magnetic Project Mat](#) (1)
-



## Step 1 — Disassembling Samsung SPH-A760 Battery



- Push open the latch and remove the battery.

## Step 2 — Disassembling Samsung SPH-A760 Antenna



- Twist off the antenna.
- Pop off the transparent cylinder.

## Step 3 — Logic Board



- Remove the five screws as shown.

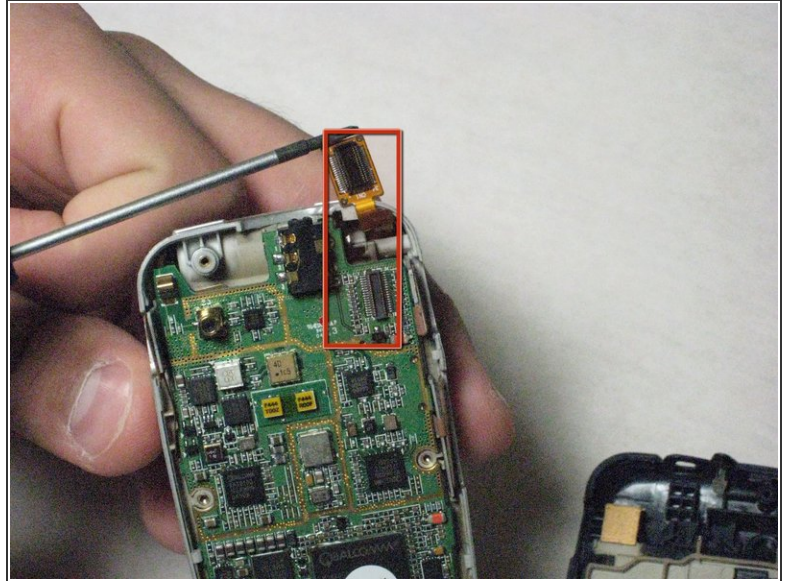
## Step 4



- Carefully pry the back plate off.

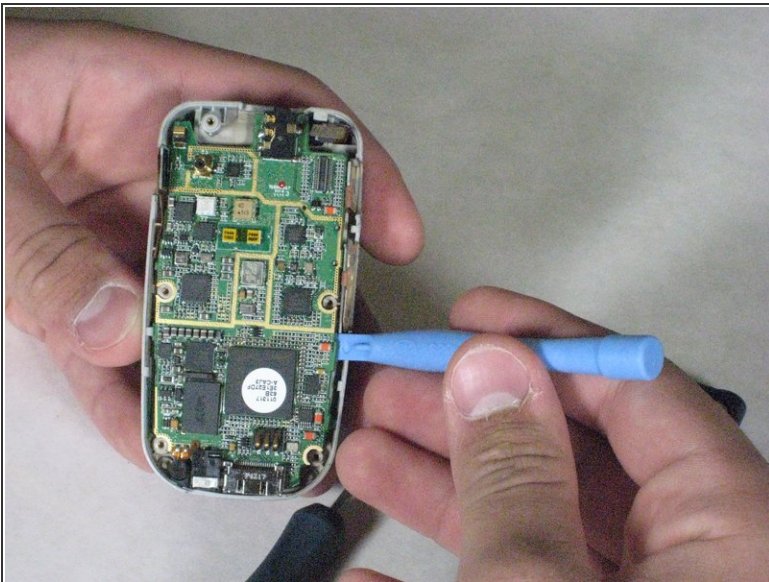


## Step 5



- Carefully detach golden screen connector.

## Step 6



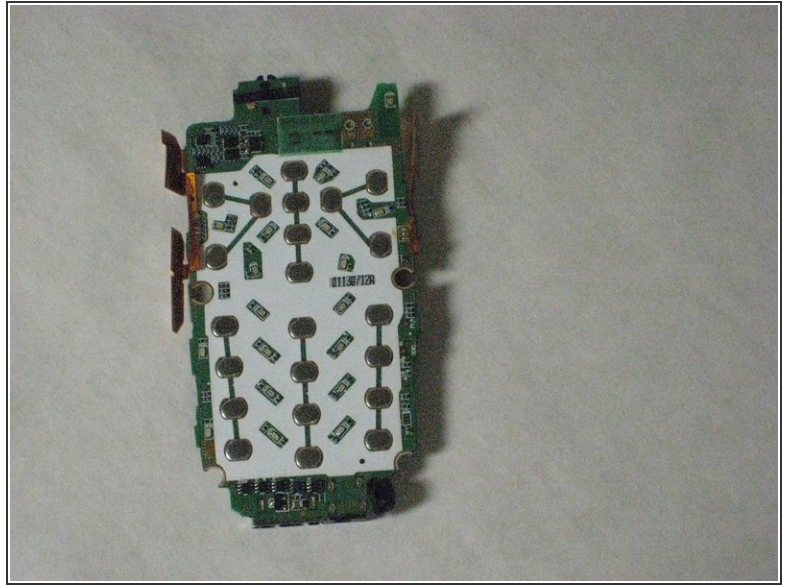
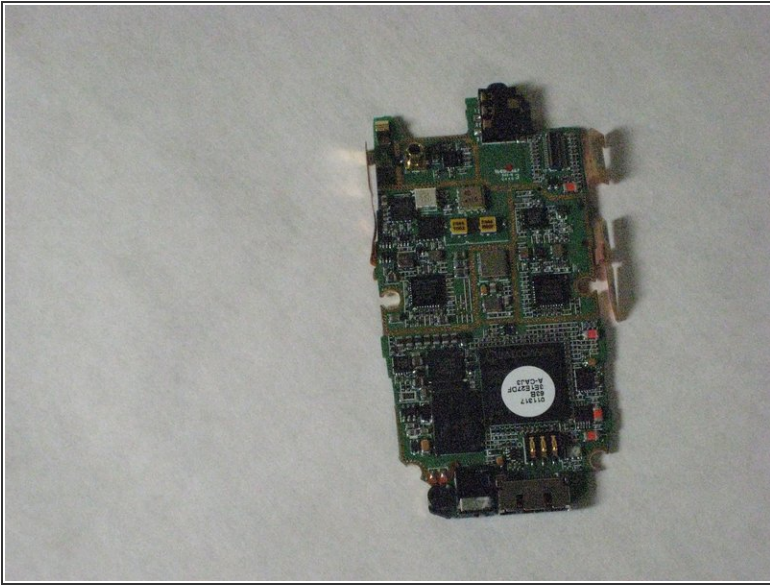
- Pop out the logic board with spudger.



Caution: Do not touch with bare hands, use tweezers or wash hands before contact.



## Step 7



- Place the logic board on a clean tray.

## Step 8 — Keyboard



- Peel off the keyboard.

To reassemble your device, follow these instructions in reverse order.