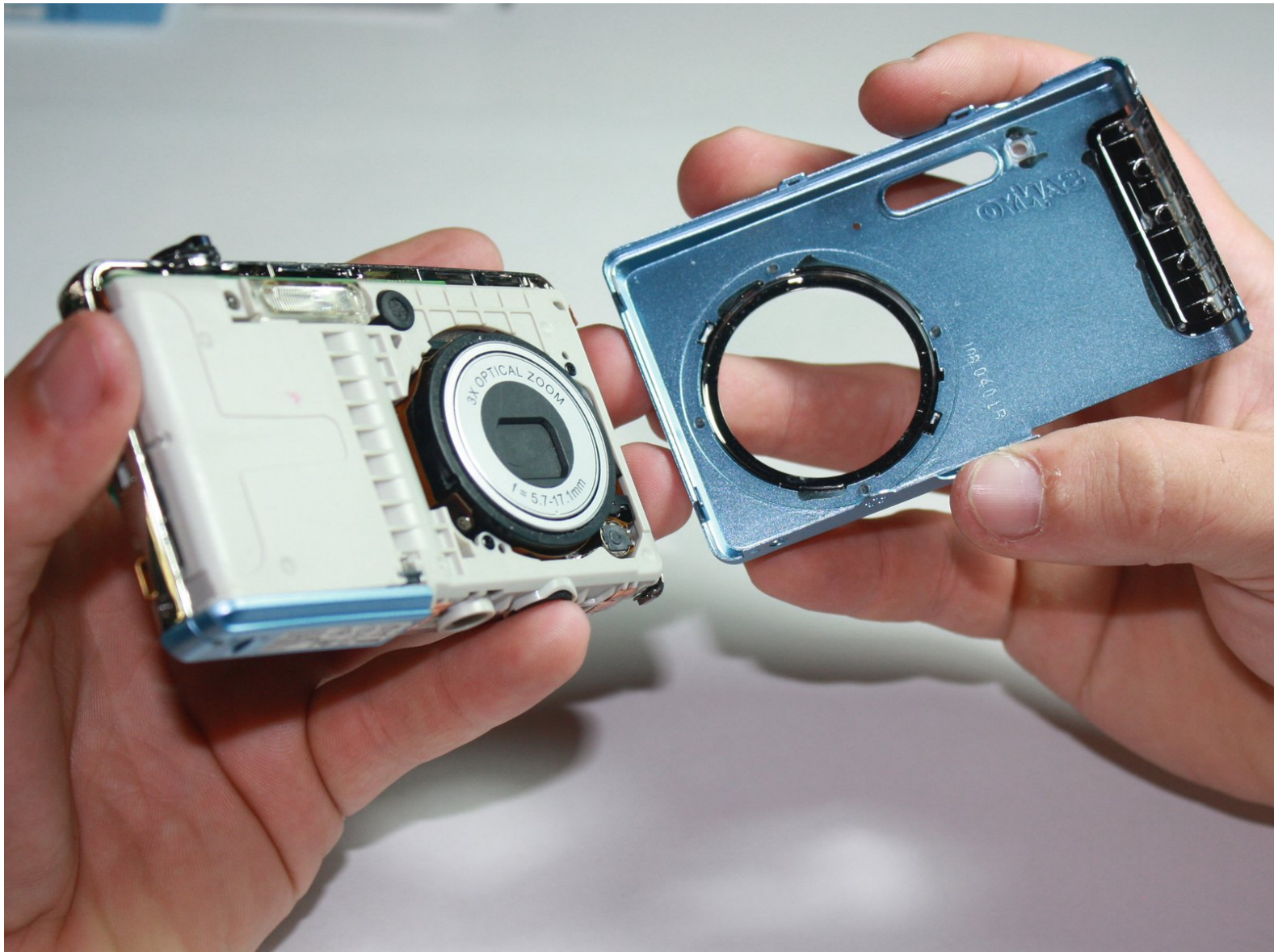




Disassembling Sanyo VPC-T850 Outer Casing

Written By: Jonathan Yau



INTRODUCTION

This is how you would remove the outer panels of the Sanyo VPC-T850. This step is required for any repairs or a tear down.

TOOLS:

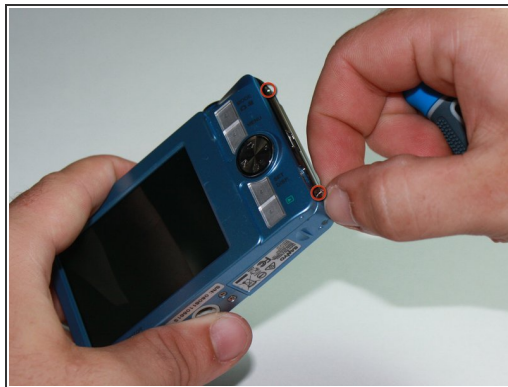
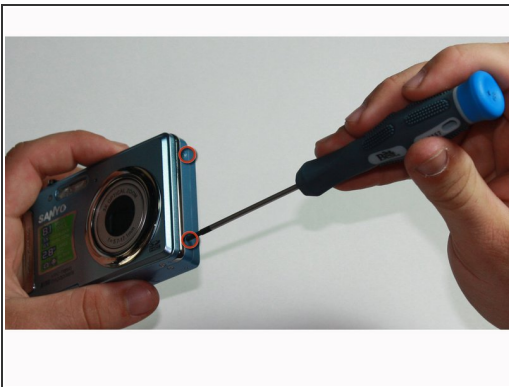
- [Phillips #00 Screwdriver](#) (1)
 - [Spudger](#) (1)
-

Step 1 — Disassembling Sanyo VPC-T850 Outer Casing



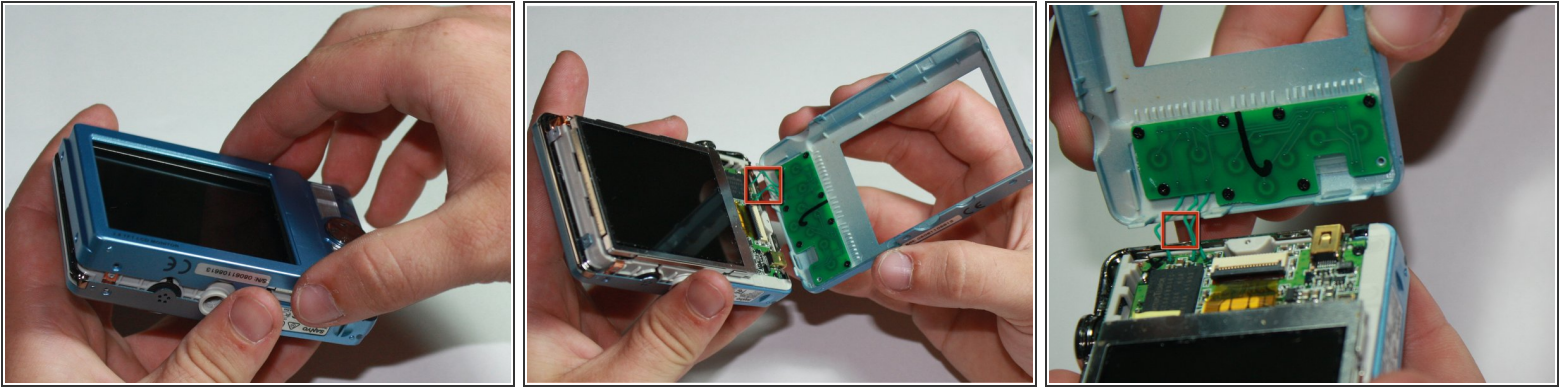
- Turn the camera off by pressing the small, square button embedded in the top rim of the camera.
 - Slide out and open the hatch located on the bottom-right side of the camera.
 - In the revealed compartment, move the small notch and push in on the battery to remove it.
- i** During reassembly, there is an arrow on the battery indicating which way it goes in.

Step 2 — Remove Screws



- Using the Phillips #00 Screwdriver, remove the 8 screws located around the sides and bottom of the camera.
- i** Look for the screwhead with the label PH00 on the side in the kit provided.
- ★** Be sure to save these screws in a secure area to ensure they are not lost.

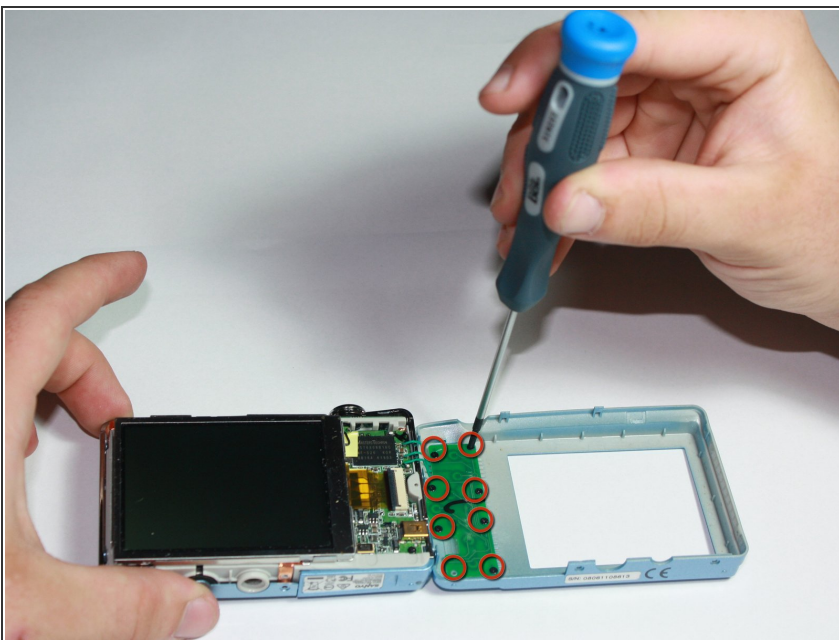
Step 3 — Remove Rear Panel



- Using the spudger, slowly pry the rear panel away from the left side.

⚠ Be careful not to damage the three green cables as you remove the rear panel of the camera.

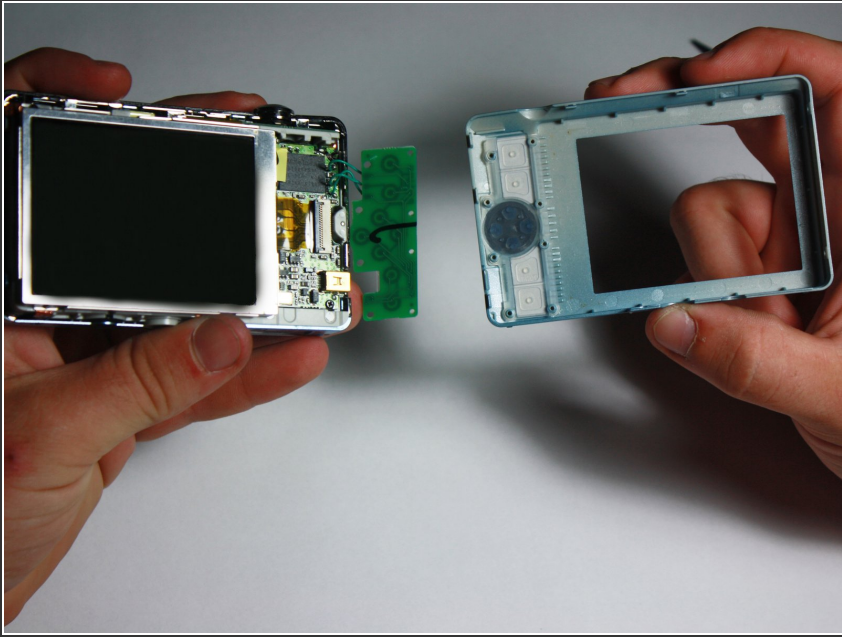
Step 4



- Using the Phillips #00 Screwdriver, remove the 8 black screws connecting the green keypad chip to the rear panel.

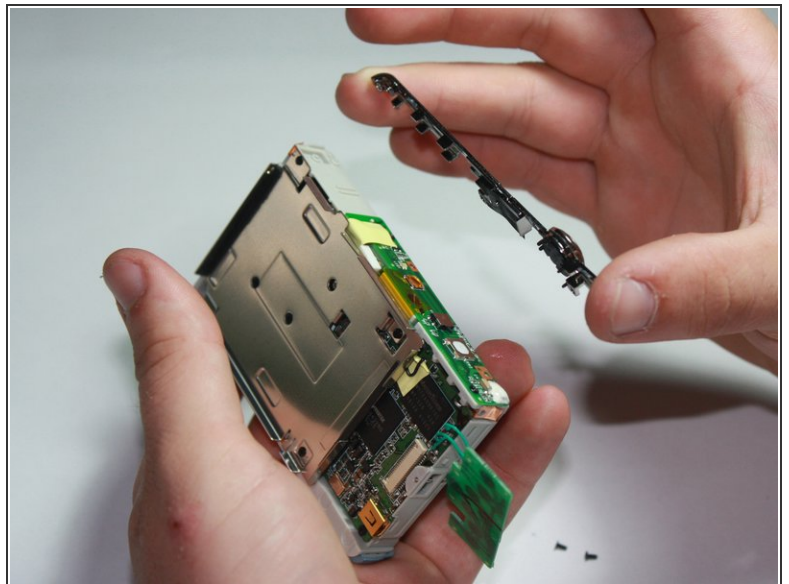
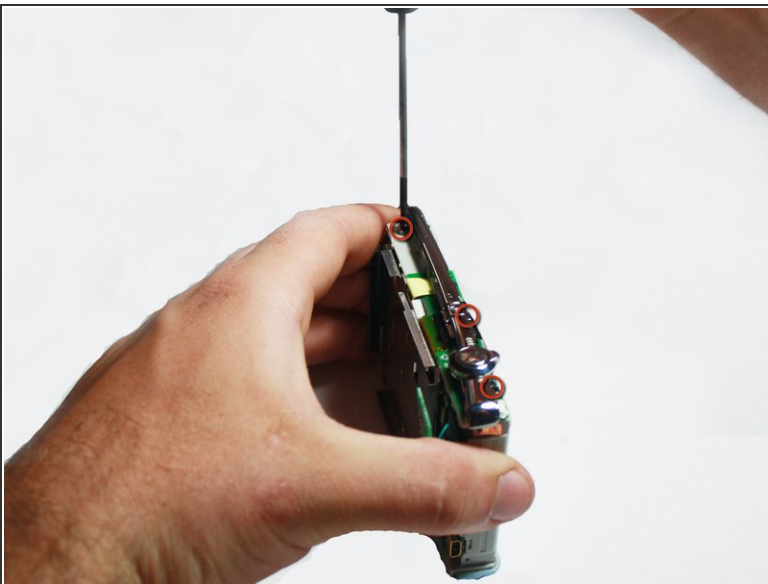
⚠ Do not put any excessive force on the green wires.

Step 5



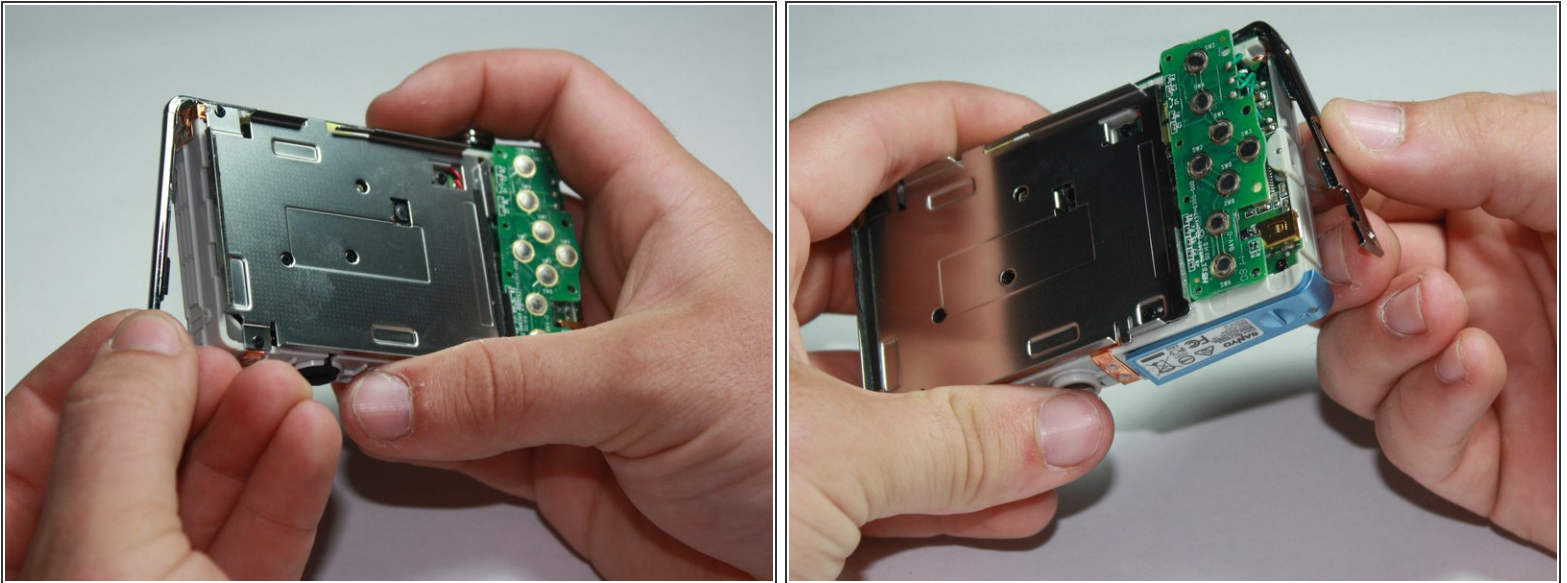
- Separate the rear panel from the rest of the camera assembly.

Step 6



- Using the Phillips #00 Screwdriver, remove the 3 screws located across the top of the camera.

Step 7




- Carefully pull off the side covers wrapped around the camera.

Step 8 — Remove Front Cover



- Using the spudger, gently pry the front cover of the camera off.

 As the front cover is fragile, it can easily break if not removed carefully.

To reassemble your device, follow these instructions in reverse order.