



Disassembling Sonos Play 1 Rear Housing Cover

Prerequisite Only

Written By: Adan Camerino Macias



INTRODUCTION

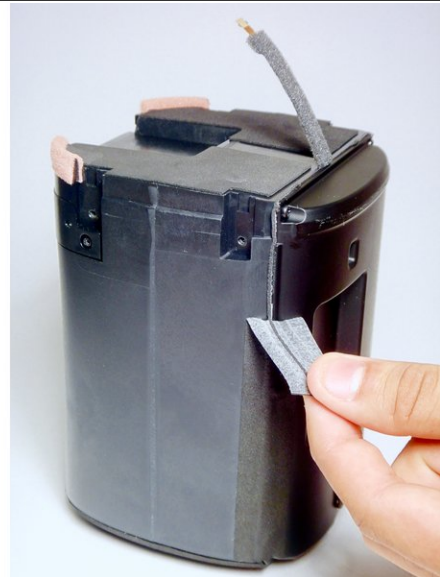
This guide is a prerequisite for several other Sonos Play: 1 guides.



TOOLS:

- [Tweezers](#) (1)
 - [iFixit Opening Tools](#) (1)
 - [64 Bit Driver Kit](#) (1)
-

Step 1 — Disassembling Sonos Play 1 Rear Housing Cover



- Using a plastic opening tool, remove the grey tape from both sides of the device.

Step 2



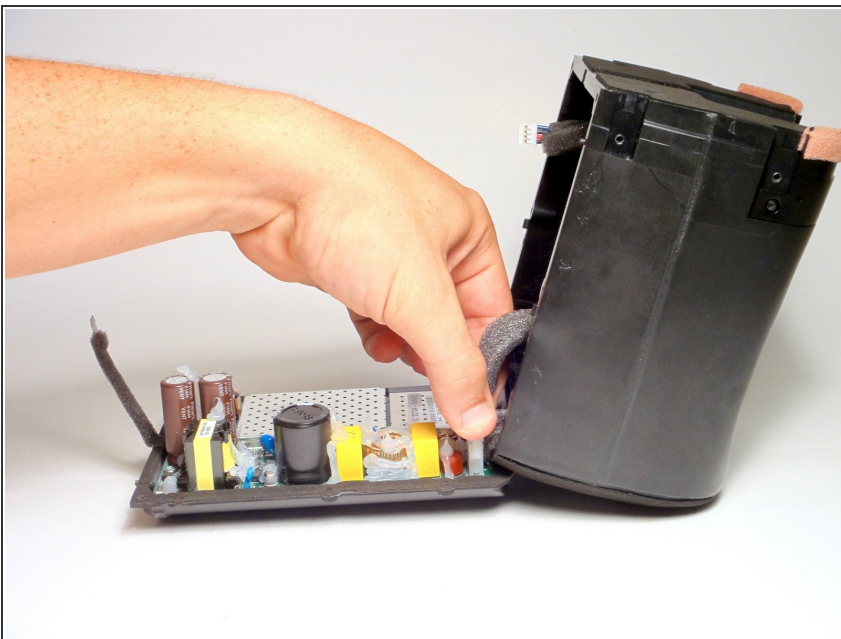
- Remove the six 9 mm Torx #9 screws.
 - Using a plastic opening tool, detach the rear housing cover from the housing.
- ⚠ Try not to jerk the rear housing cover, as its wires are still connected to delicate electronics.

Step 3



- Using tweezers, grip the connector fixed to the motherboard's audio cable.
- While pulling on the connector, detach the cable by pressing the connectors release.

Step 4



- Using your fingers, grip the connector fixed to the motherboard's power cable and detach it.
- You will now be able to remove the rear housing cover.

To reassemble your device, follow these instructions in reverse order.