



# Disassembling Sony Action Cam HDR-AS15 Circuit Board

This guide will show you how to access the internal circuit board of the Sony HDR-AS15. This is not a replacement guide.

Written By: Scott Scarpinato



---

## INTRODUCTION

You will take apart the camera case to access the circuit board after removing the battery. Be ready to handle small parts and screws.



### TOOLS:

- [Phillips #00 Screwdriver](#) (1)
  - [Tweezers](#) (1)
  - [iFixit Opening Tools](#) (1)
-

## Step 1 — Getting to the Battery



- To access the battery, push left on the rear cover of the action cam. The rear panel should easily slide to the side.

## Step 2 — Removing the Battery Tray



- Open the rear panel outward to reveal the battery tray and memory card slot.
- Pinch the protruding bar next to the "Pull" text and slide the tray outwards.



### Step 3 — Removing the Battery



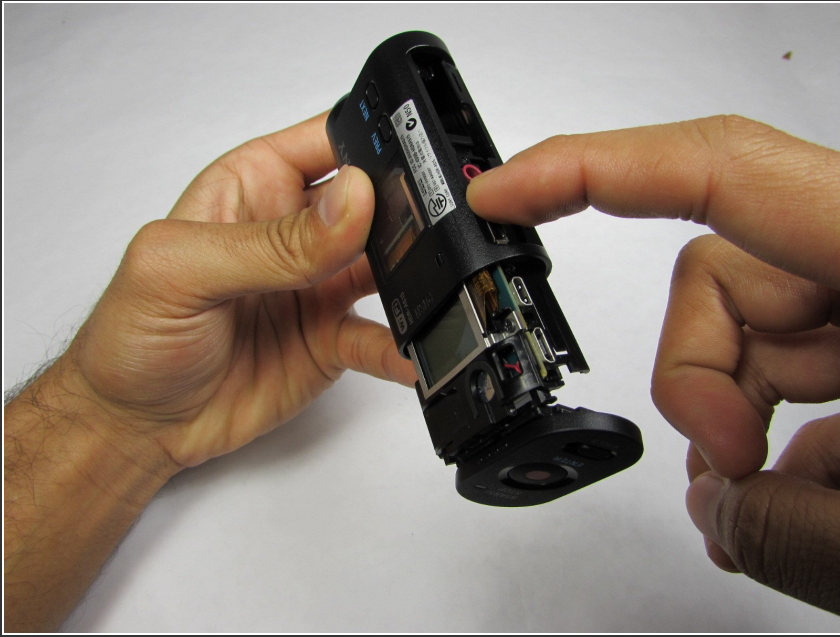
- When the battery tray has been removed from the Action Cam, you can simply pull the battery out of the tray.

### Step 4 — Taking off the screws and bottom plate



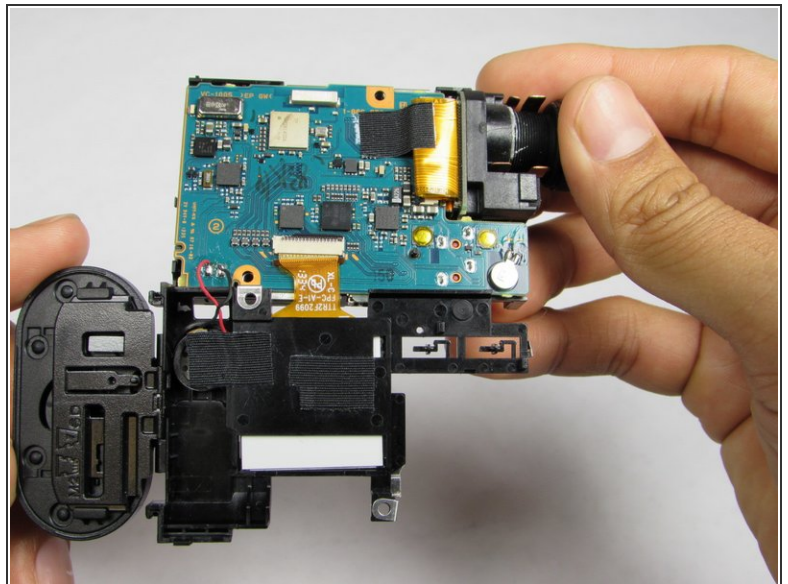
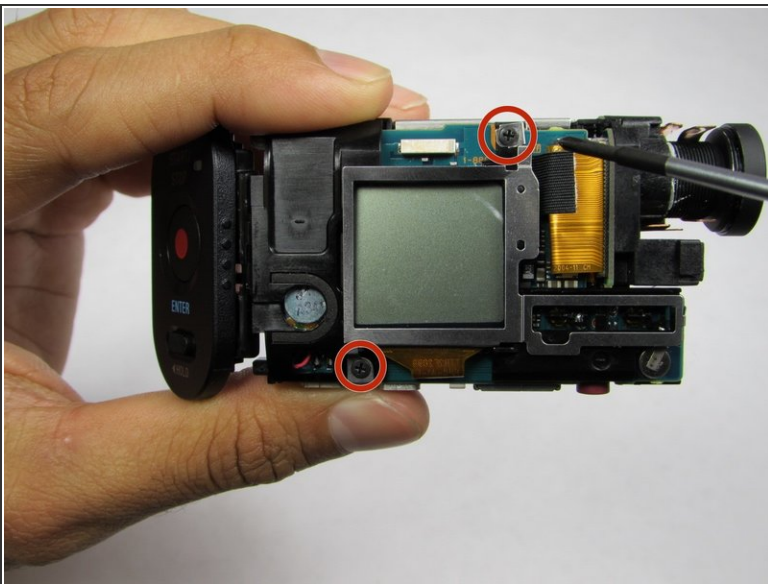
- Open the bottom tab with your finger or a plastic opening tool.
- Pull the tab out, not up, to remove it completely.
- Remove the two screws indicated by the second photo.
- Once the screws are removed, extract the plastic plate as shown in the third photo.

## Step 5 — Extracting the Electronics



- Separate the outer casing from the electronics by pushing on one of the ports toward the back end of the case. The electronics should slide right out.

## Step 6 — Exposing the circuit board



- Remove the two 1/4 in. Phillips screws on the LCD side of the device using a #00 Phillips head screwdriver.
- Flip the LCD display downward to reveal the circuit board.

To reassemble your device, follow these instructions in reverse order.