



Disassembling Sony Clie PEG-NR70 The Case

Written By: Daniel Soski





TOOLS:

- [Phillips #00 Screwdriver](#) (1)
-

Step 1 — The Case



- Unscrew the 1.9mm screw located at the top of the device with a Phillips #00 screwdriver.

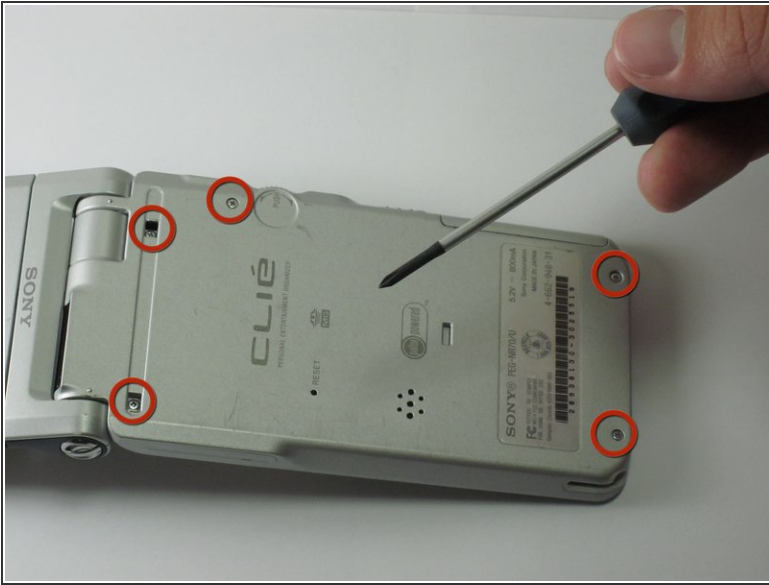
ⓘ It may be helpful to set up a piece of paper to keep track of where removed screws came from.

Step 2



- Unscrew the 2.5mm screw located on the left side of the device with a Phillips #00 screwdriver.

Step 3



- Unscrew the five 2.5mm screws on the back panel with a Phillips #00 screwdriver.
- Remove the back panel by lifting it away with your hands.

To reassemble your device, follow these instructions in reverse order.