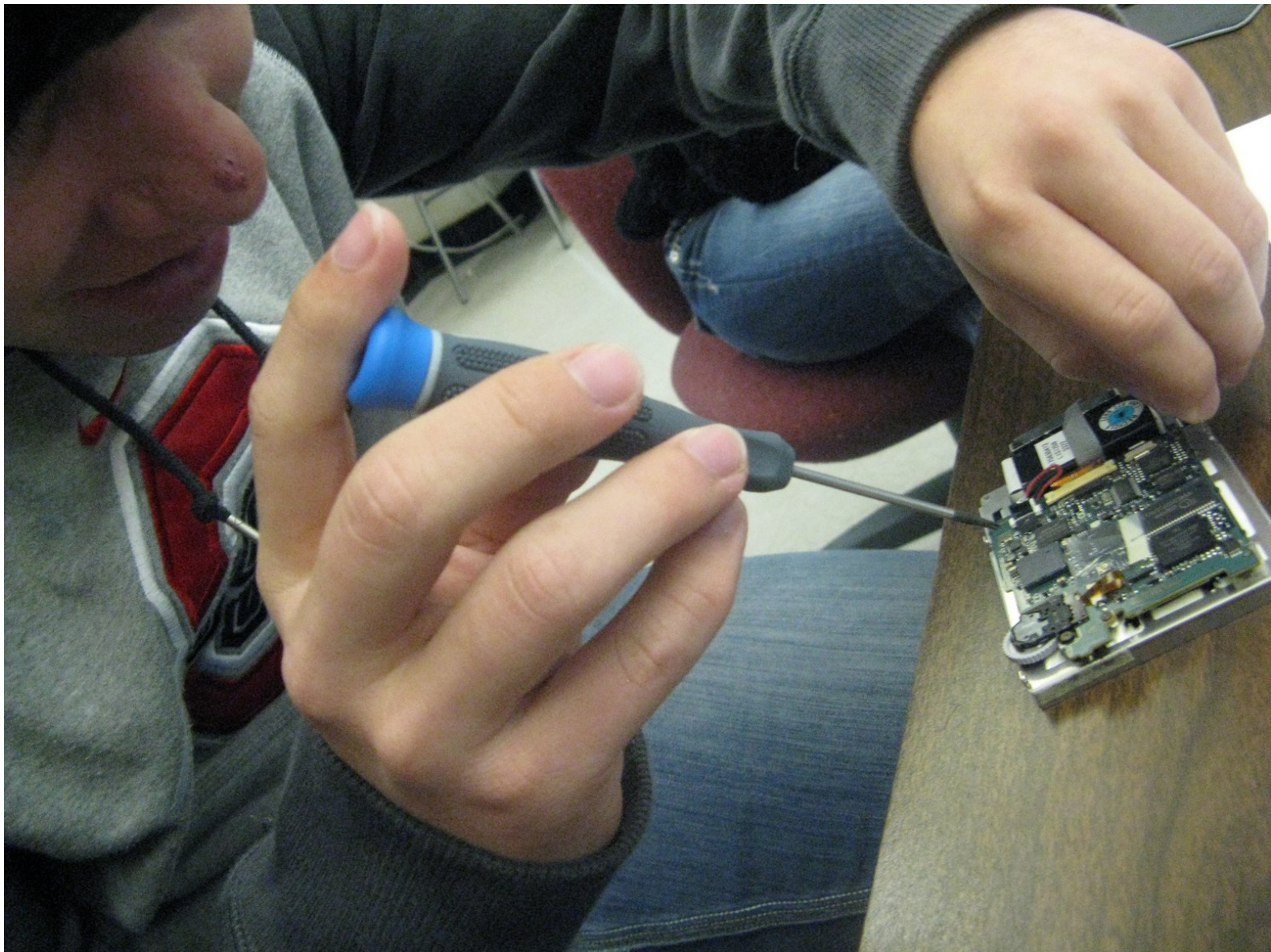




# Disassembling Sony Clie PEG-SJ22 Motherboard

Written By: Samantha Taylor

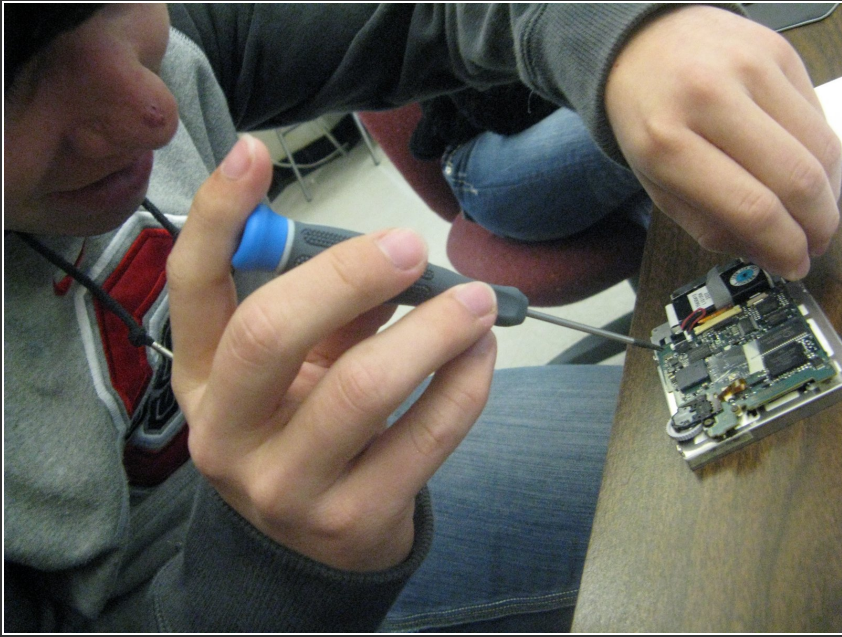




## TOOLS:

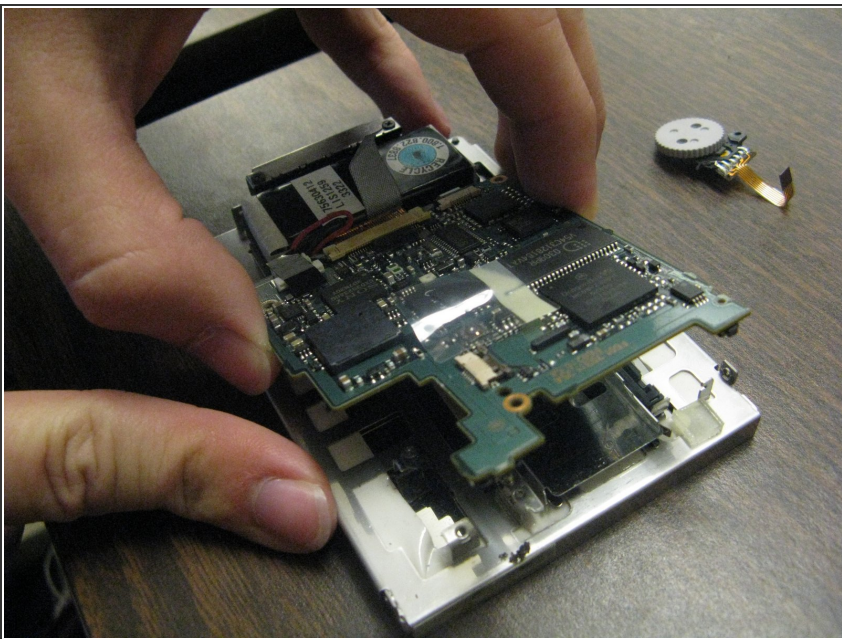
- [64 Bit Driver Kit](#) (1)
-

## Step 1 — Disassembling Sony Clie PEG-SJ22 Motherboard



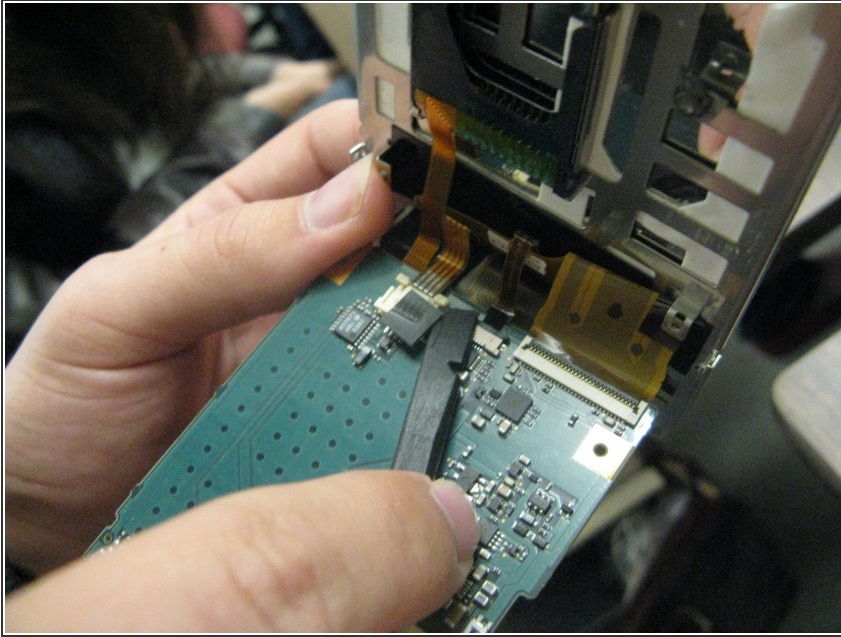
- On the back of motherboard, unscrew the 5 screws on the back

## Step 2



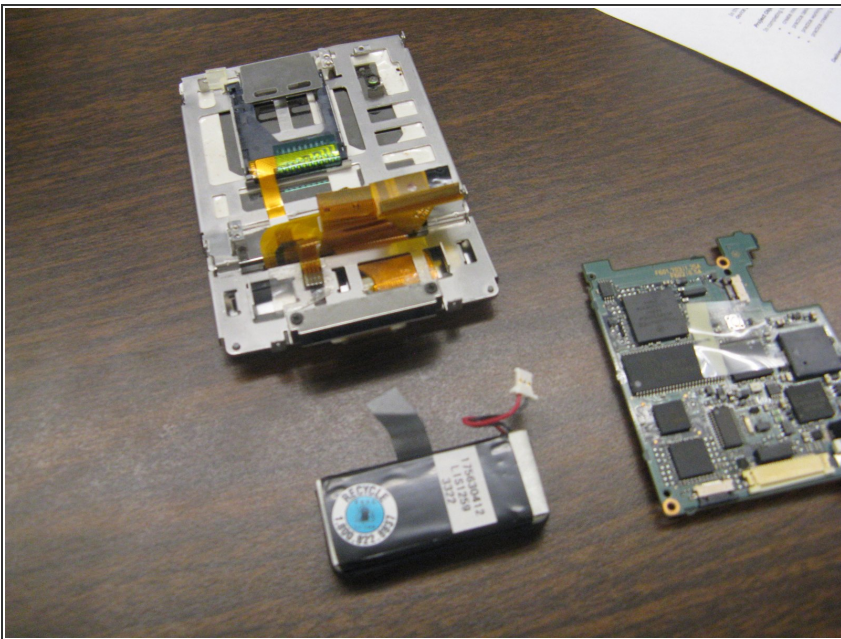
- Uplift from the upper left side3 to unclip motherboard

### Step 3



- Remove ribbons that connect the screen to the motherboard and remove battery

### Step 4



- This is what your device should look like after the motherboard is removed

To reassemble your device, follow these instructions in reverse order.