



Disassembling Sony Clie PEG-SL10

Complete dissassembly of the Sony Clie PEG-SL10

Written By: Steve





TOOLS:

- [Phillips #0 Screwdriver](#) (1)
-

Step 1 — Sony Clie PEG-SL10



- Start here with your Clie in hand.

Step 2



- Unlock the cover slide lock.

Step 3



- Remove cover.

Step 4



- Remove the six case screws on the sides and bottom of the device.

Step 5



- Remove the front case.

Step 6



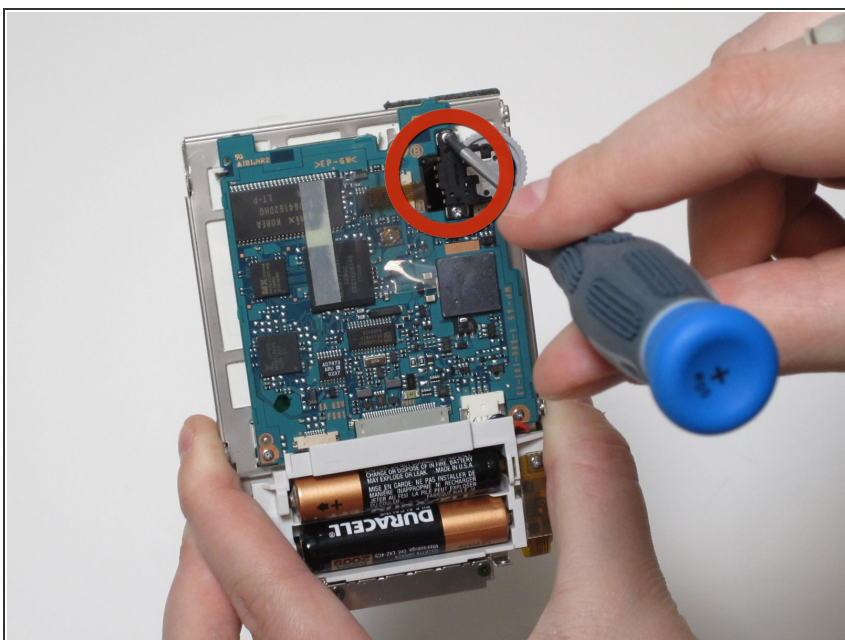
- Turn the device over and remove the back case.

Step 7



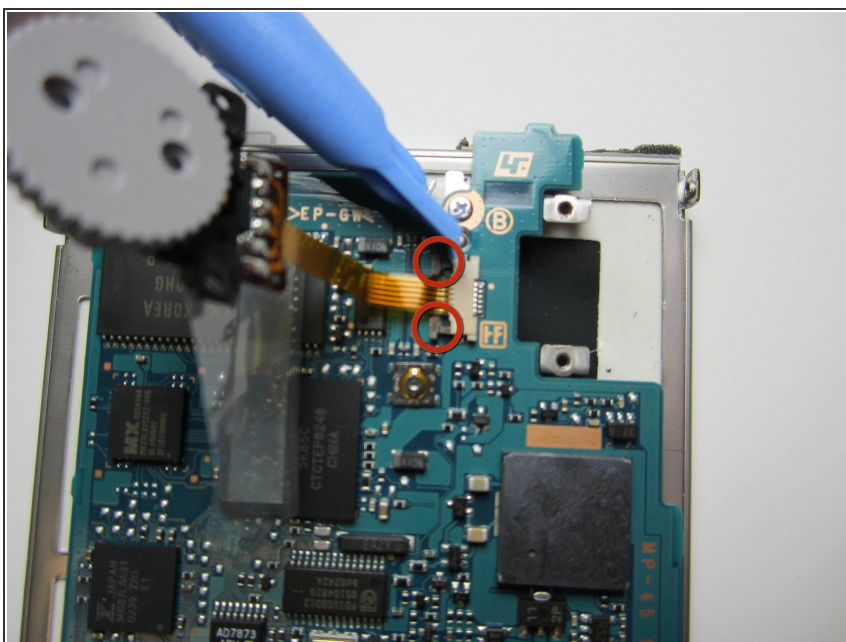
- Allow room for the case to come off from the scroll wheel.

Step 8



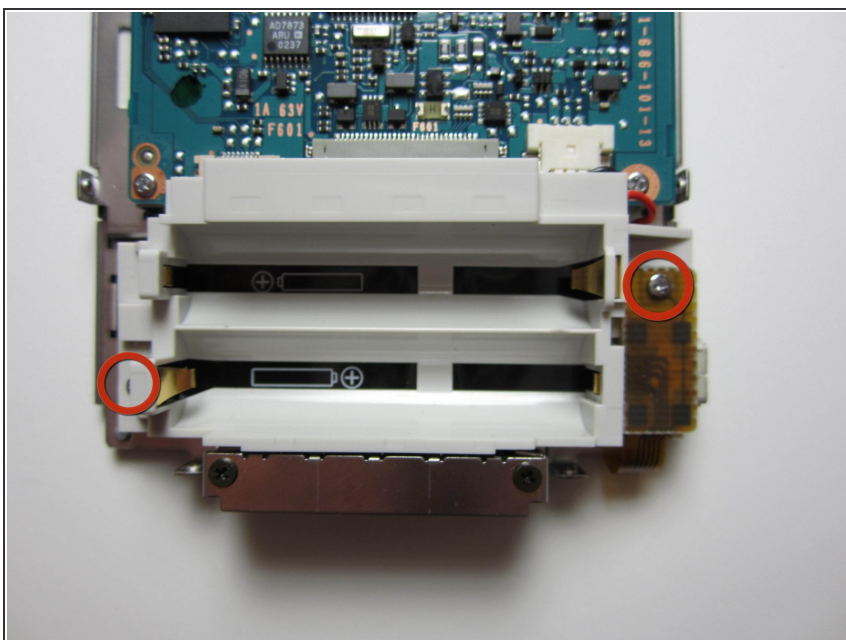
- Remove the two screws holding the scroll wheel in place.

Step 9



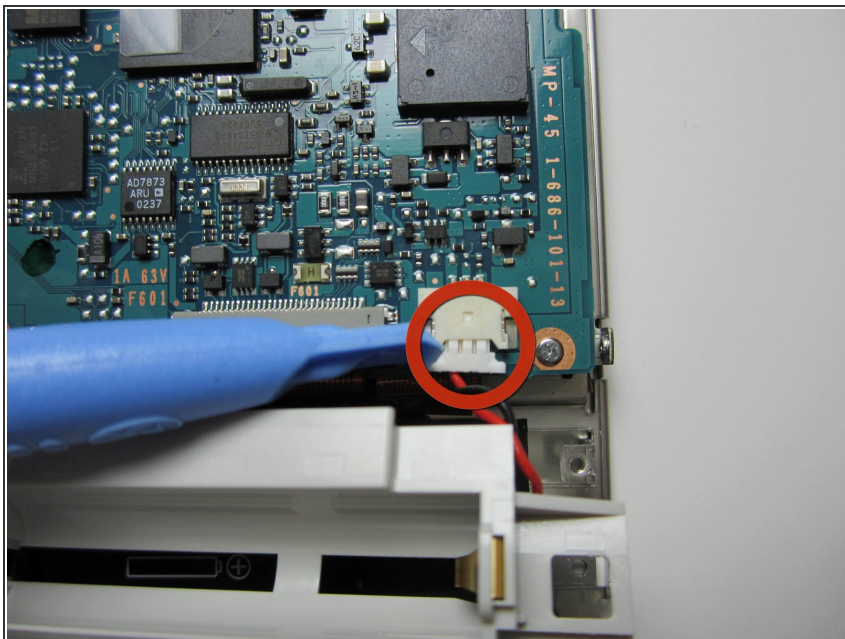
- Pull out both sides of the clip to remove the scroll wheel power cable from the device.

Step 10



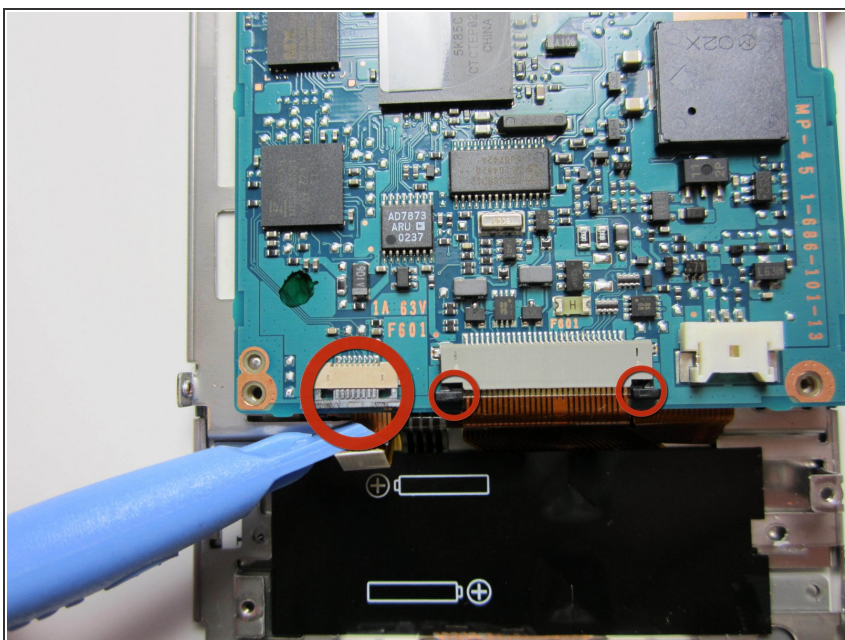
- Unscrew the two screws to remove the battery harness.

Step 11



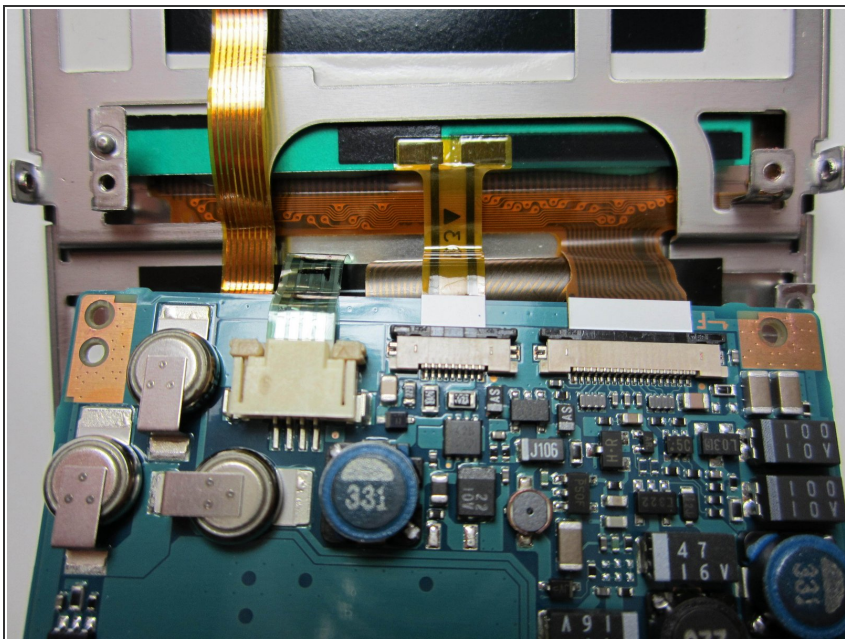
- Pull the power cable from the socket.

Step 12



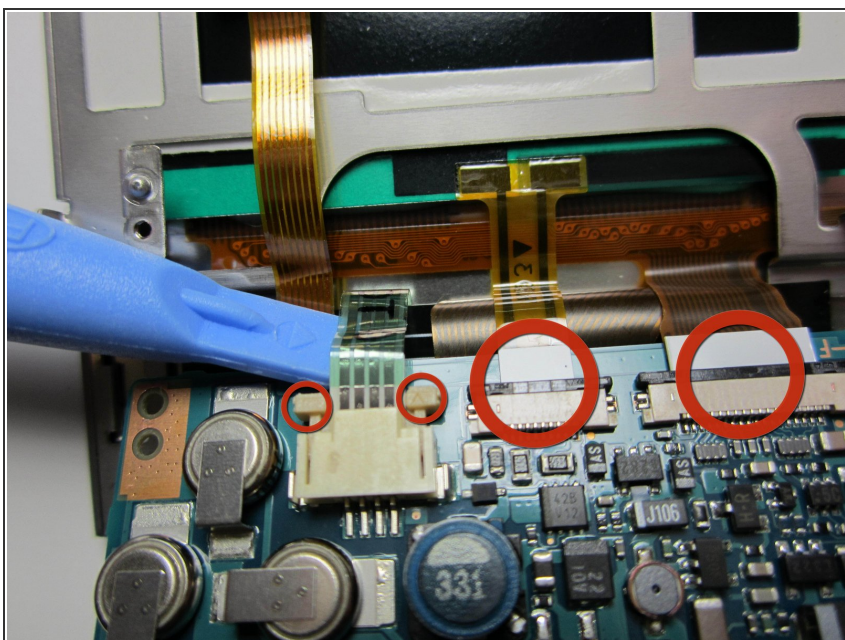
- Pull out the clips to remove the power cables from the motherboard.

Step 13



- Rotate the motherboard toward you to expose the power cables on the other side.

Step 14



- Pull out the clips to remove the power cables from the motherboard.

To reassemble your device, follow these instructions in reverse order.