



# Disassembling Sony Cyber Shot WX80 Total

## Disassembling Part by Part

This guide will take you through disassembling the entire camera. Use this guide to disassemble your camera up to the point of the component that you wish to replace.

Written By: Scott Grambo



## INTRODUCTION

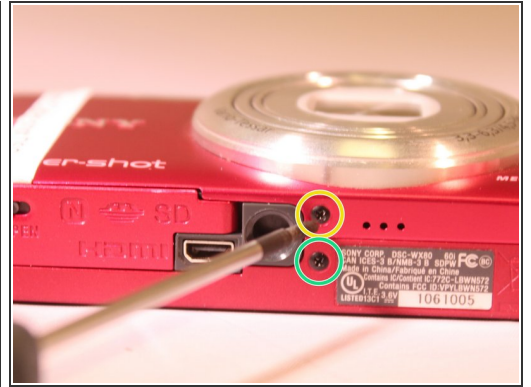
Make sure you have the necessary tools in order to complete the disassembly for the Sony Cyber Shot WX80 and be sure to have a steady hand when dealing with the smaller and more fragile parts.

---

### TOOLS:

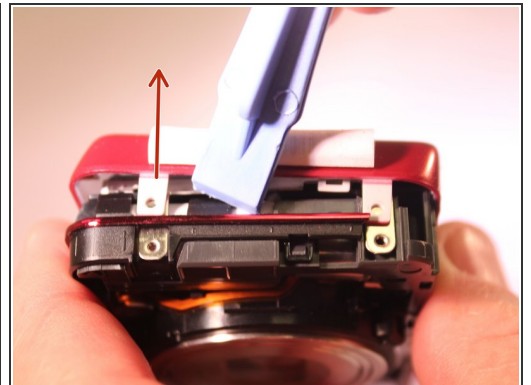
- [Phillips #00 Screwdriver](#) (1)
  - [Spudger](#) (1)
  - [iFixit Opening Tools](#) (1)
  - [Magnetic Project Mat](#) (1)
  - [Tweezers](#) (1)
-

## Step 1 — Total Disassembly Part by Part



- Begin by removing all six #00 screws holding the outer chassis together.
- ⓘ Remember to keep track of all screws as they are small and very easy to lose

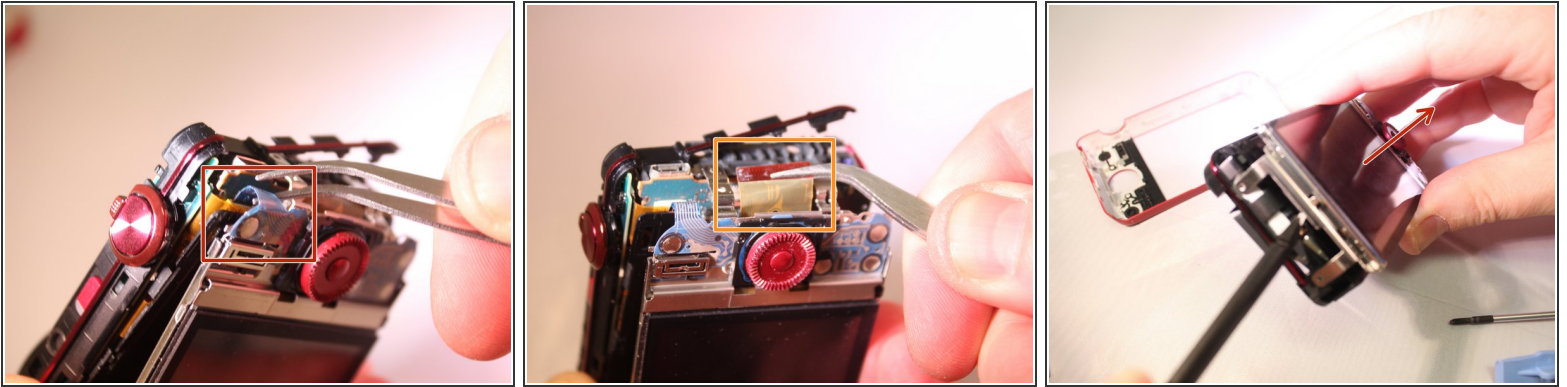
## Step 2



- ⓘ At this point most of the parts in the camera should be free moving.
- ⓘ Take note of the small free moving flap near the battery port seen in the first of the three photos.
- Now pry apart the top and bottom shell of the case.

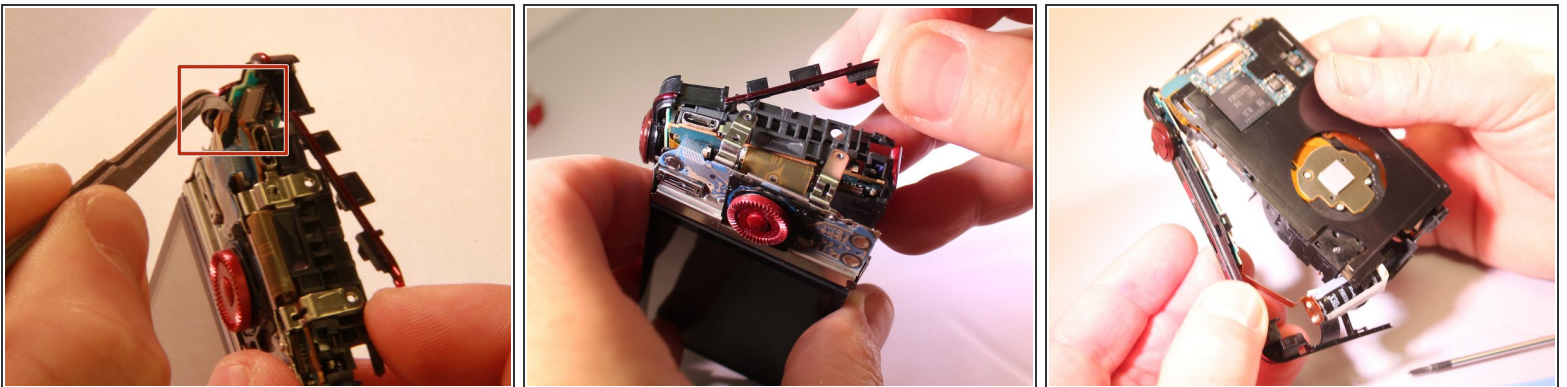


### Step 3



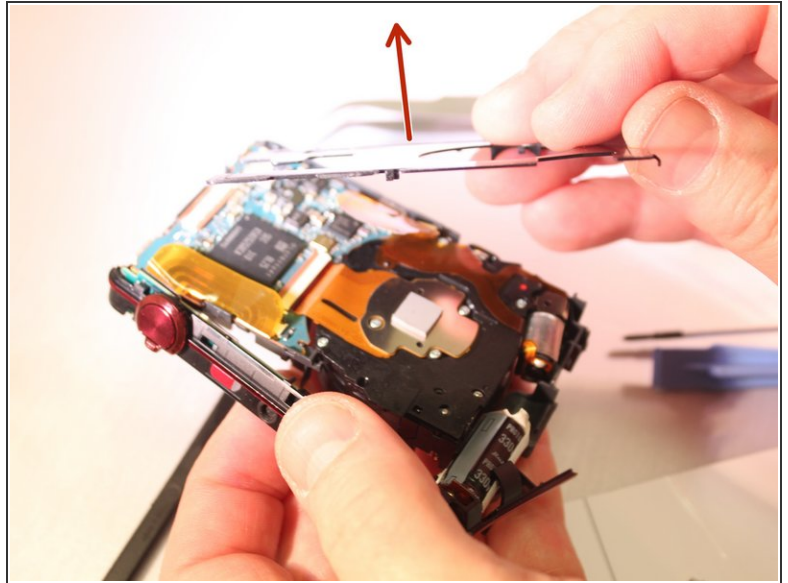
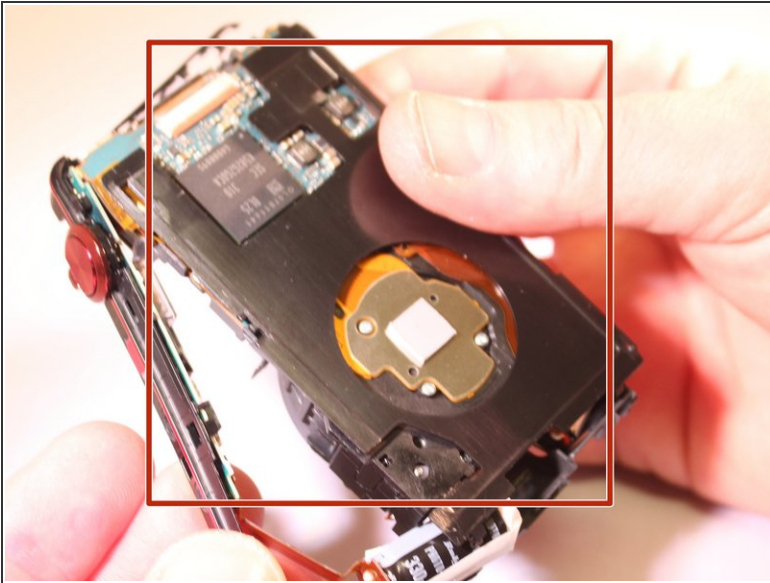
- Remove the two ribbon cables holding the LCD screen in place. Pull them directly out of the port they are plugged into.
- ⚠ Take care not to tear these ribbons as they are the communication network that your screen uses to operate.
- Now that your LCD screen is detached you can pull it apart from the rest of the camera.

### Step 4



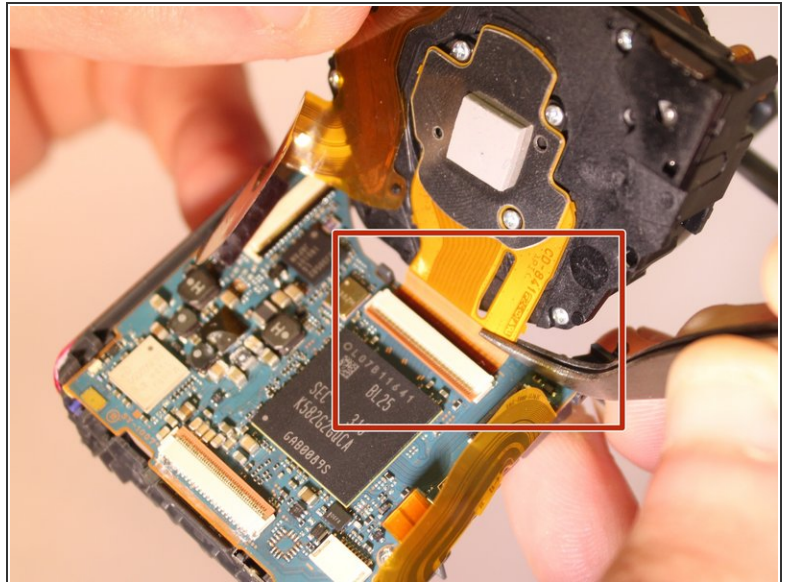
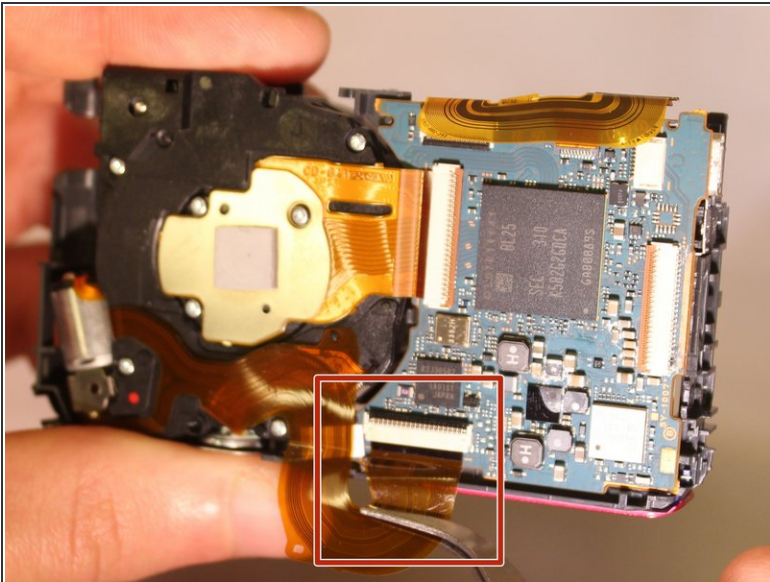
- The inner lining frame has an orange ribbon cable (circled in the image) that needs to be detached before it can be safely removed.
- ⚠ Carefully remove the inner frame lining as it can be fragile.

## Step 5



- After the LCD screen has been removed there is a black metal plate that can be pulled off revealing the motherboard and the lens.

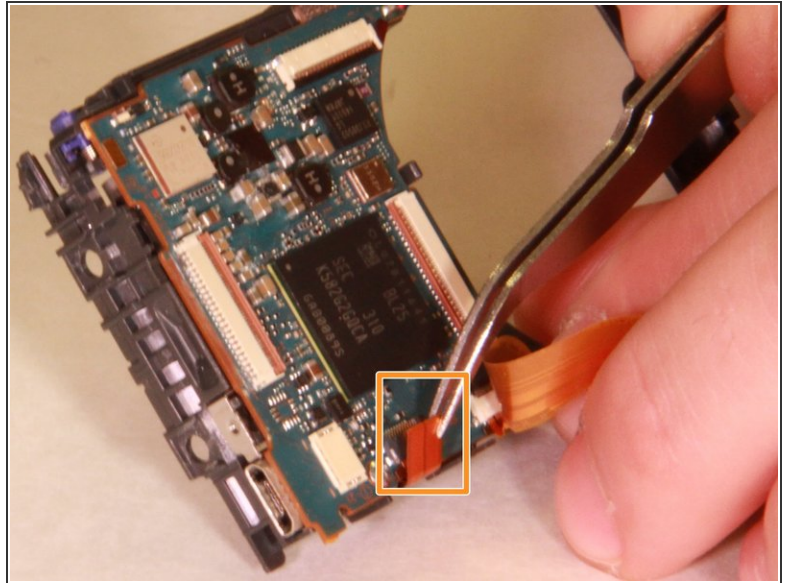
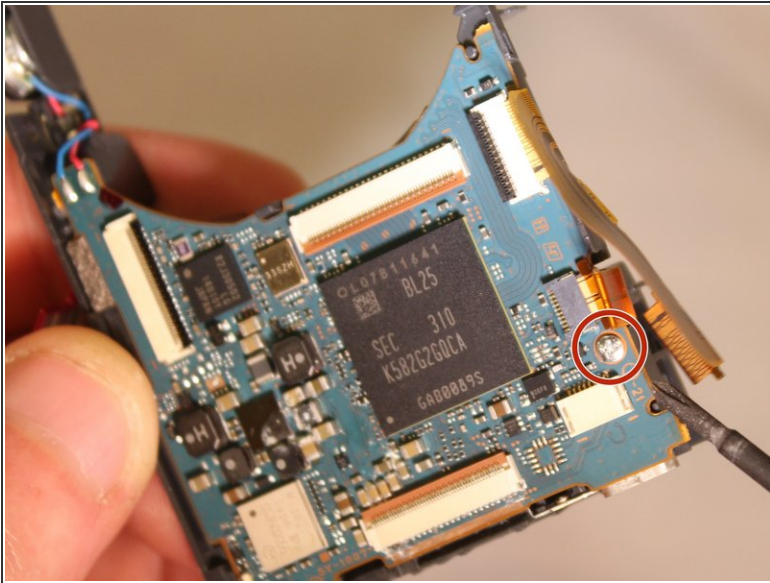
## Step 6



- To separate the motherboard from the lens there are two ribbon cables that need to be pulled out of their ports.



## Step 7



- Finally to separate the motherboard from the base skeleton frame, one last silver screw and one ribbon cable need to be removed.

To reassemble your device, follow these instructions in reverse order.