



Disassembling Sony Cyber-shot DSC-W230

Separating Camera and Display

Separating the display portion of the unit from the camera sensor.

Written By: Steve Van Hall



INTRODUCTION

Before the display and camera housing can be repaired or replaced they must first be separated. This guide will detail how to prepare the display and camera for separation.



TOOLS:

- [iFixit Opening Tools](#) (1)
-

Step 1 — Disassembling Sony Cyber-shot DSC-W230 Exterior Case



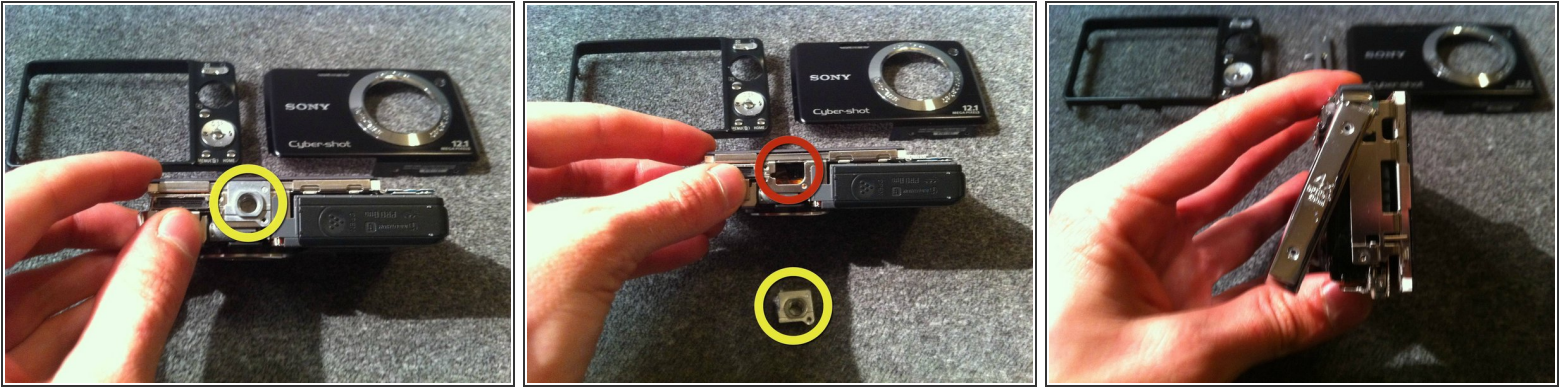
- Begin by placing the camera upside down and removing the three small center screws.
- All screws are the same size and length and can be used interchangeably.

Step 2



- Turn the camera on its side (Counterclockwise). Remove the two small screws on either side of the silver panel.
- Turn the camera 180 degrees onto its other side and remove the two small screws on either side of the silver panel.

Step 3



- Locate the camera's tripod mount located on the bottom of the camera.
- Carefully remove the camera's tripod mount and place it aside.
- Be careful not to lose this piece.
- Rotate the silver panel labeled 4x clockwise.

Step 4 — Separating Camera and Display



- Align the camera so that the side with "4x Optical Zoom" is facing toward you.
- Gently twist the bottom corner clockwise until you feel the side panel unlock.
- Lift off the side panel and set aside.

Step 5



- Rotate the camera 180 degrees to face the side panel with the lanyard loop on it.
- Gently lift the panel vertically until it lifts off

⚠ Take care to not lose the small rectangular portion on the bottom of the panel.

Step 6



- Position the camera so the bottom is facing up and the display away from the surface.
- Gently pry the screen portion from the camera portion with your fingers or a plastic prybar.
- ⚠ Do not fully separate the two components! the screen is attached by two ribbon cables.
- Lay the display flat to expose the circuit board and the display control ribbon cables.

To reassemble your device, follow these instructions in reverse order.