



Disassembling Sony Ericsson QuickShare T630 Phone Enclosure

This is a prerequisite guide for accessing the internal components of the Sony Ericsson QuickShare T630.

Written By: Christine Becker



INTRODUCTION

This guide acts as a prerequisite for the guides following it. This will show you how to disassemble to phone enclosure in order to access the internal components of the device.

TOOLS:

- [T8 Torx Screwdriver](#) (1)
 - [Spudger](#) (1)
-

Step 1 — Sony Ericsson QuickShare T630 Phone Enclosure



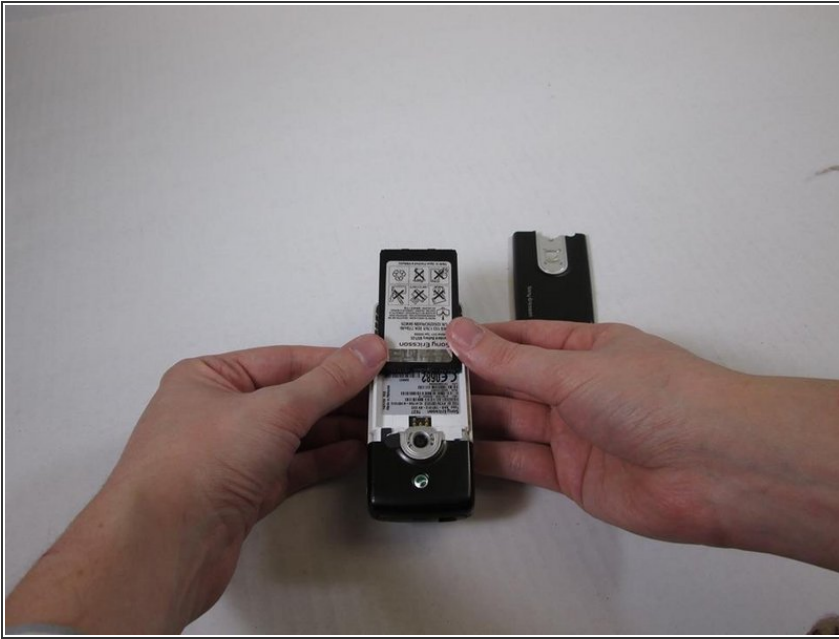
- Begin the disassembly by placing your Sony Ericsson QuickShare T630 on a flat surface.

Step 2



- Slide the protective panel on the backside of the phone downward and remove it entirely, revealing the battery underneath.

Step 3



- Slide the battery upward to remove.

Step 4



- Remove the rubber plug located near the camera by gently prying upward with your fingers.
- Gently lift the camera shield after removal of the rubber plug.

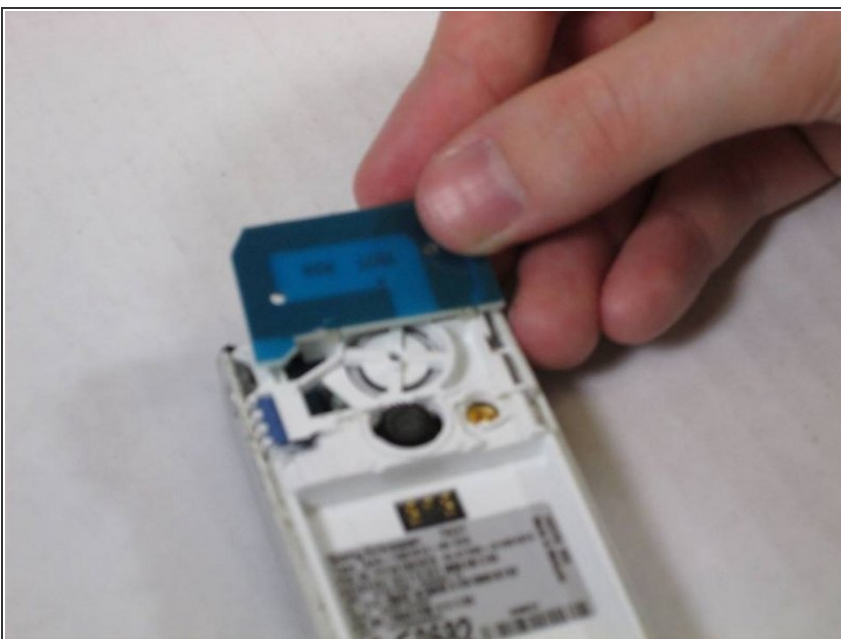
Step 5



- Pry the remaining panel to loosen its contact to the phone using a spudger.
- Slide the panel upward to remove it completely.

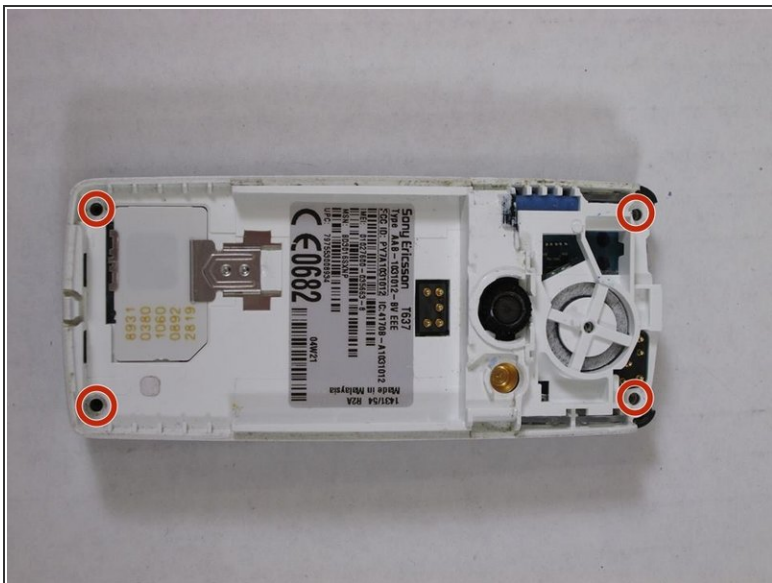
⚠ These steps will require a slight appliance of force.

Step 6



- Slide the aerial upward to remove it.

Step 7



- Remove the four screws located at each corner of the device.

Step 8



- Gently lift and remove the front panel of the phone after removing the screws.

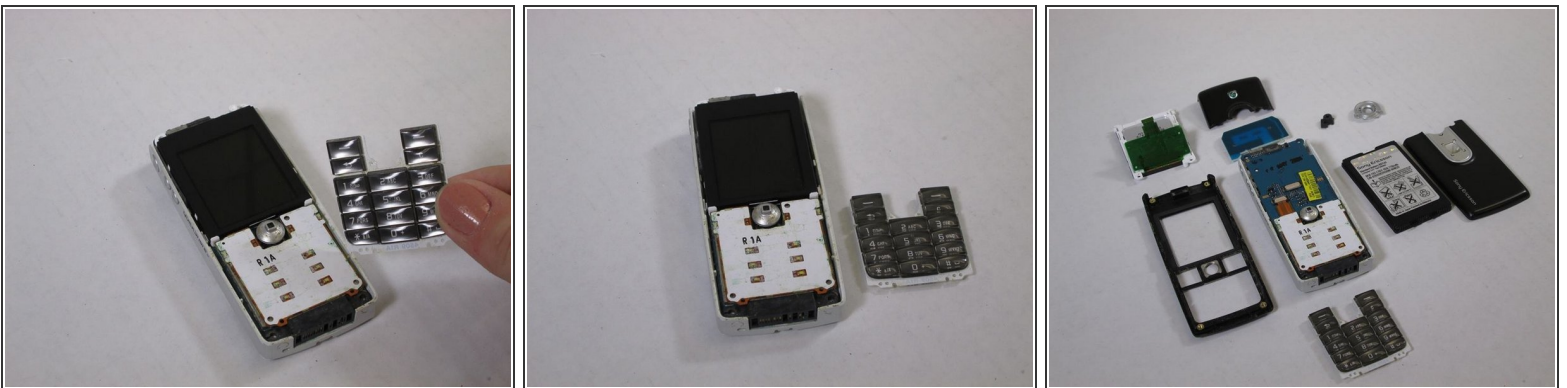
Step 9



⚠ This step is NOT required for joystick maintenance or keypad maintenance and replacement! Continue on to step 10 if you are attempting to achieve either of these goals.

- Slowly lift the screen to reveal the green circuit ribbon connecting the screen to the phone.
- Gently pull the ribbon from the circuit.
- Remove the now disconnected screen.

Step 10



- Remove the keyboard by slowly pulling it away from the circuit board.
- i** There are no direct connections between the keyboard and phone.
- i** These are all of the parts covered in this disassembly that make up the Sony Ericsson QuickShare T630.

To reassemble your device, follow these instructions in reverse order.