



# Disassembling Sony Ericsson T68i

This guide will help you to disassemble your Sony Ericsson T68i.

Written By: Tim Dascomb



---

# INTRODUCTION

This guide will help you to disassemble your Sony Ericsson T68i.



## TOOLS:

- [T6 Torx Screwdriver](#) (1)
  - [iFixit Opening Picks set of 6](#) (1)
-

## Step 1 — Disassembling Sony Ericsson T68i



- Remove the battery from the back.

## Step 2

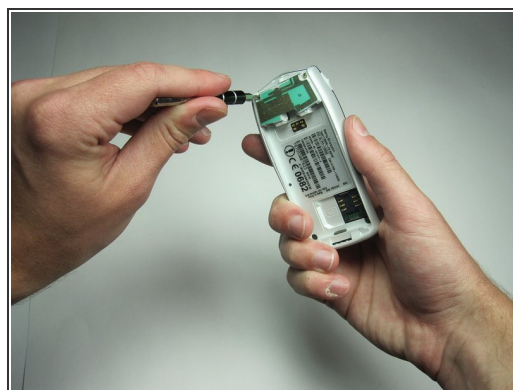


- Remove the plastic cover from the back. Pry it off from the top first with a thin plastic shim, then remove it from the two bottom clips.


⚠ When removing the top part do not bend it too far down, or else you risk breaking the two bottom clips.



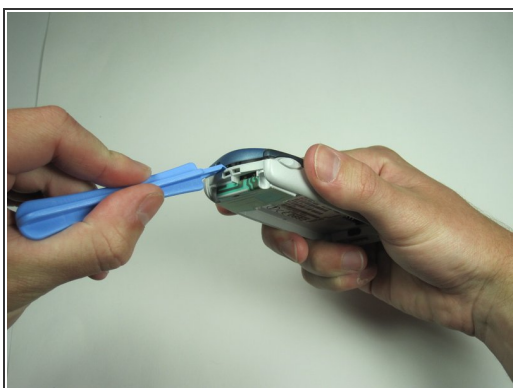
## Step 3



- Unscrew all four Torx T6 screws.

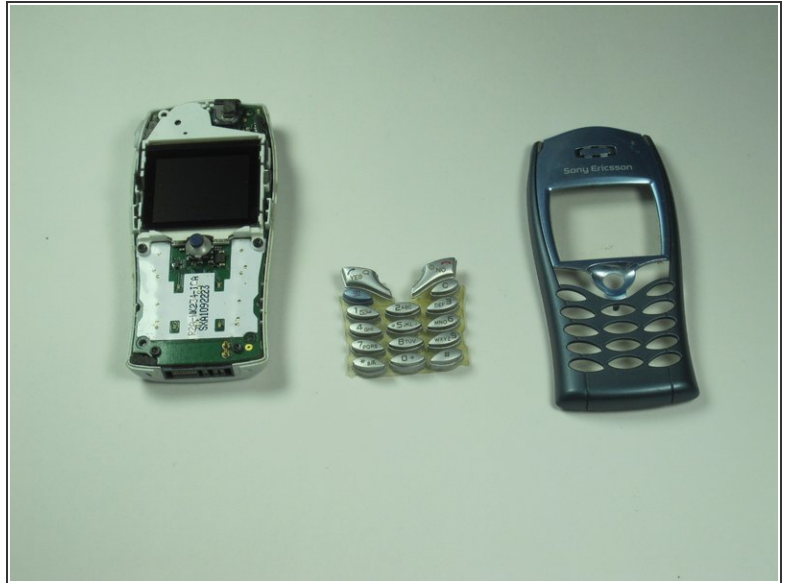
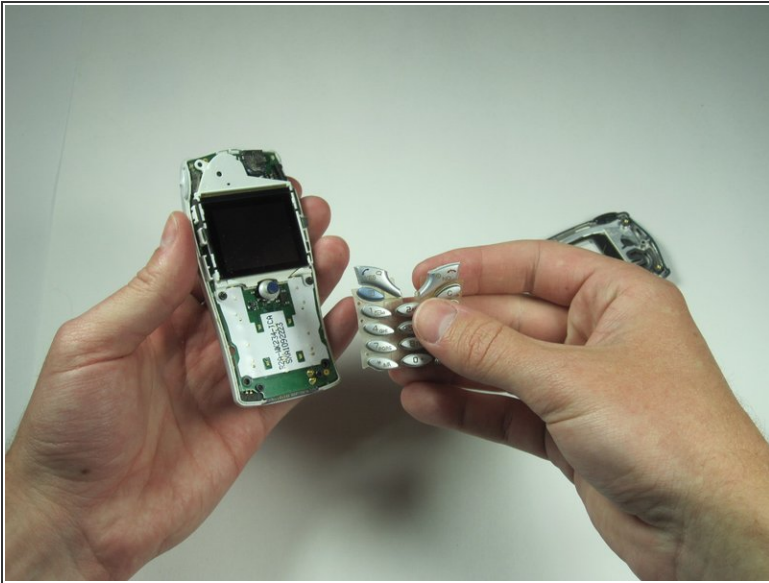
 Keep in a safe place.

## Step 4



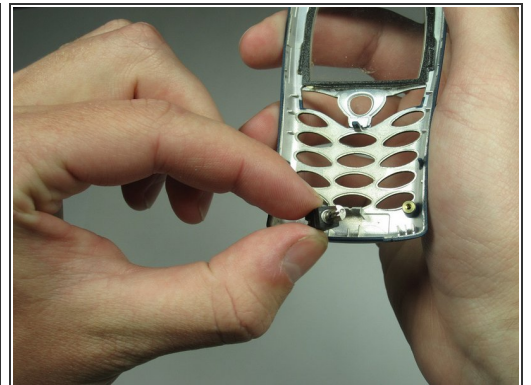
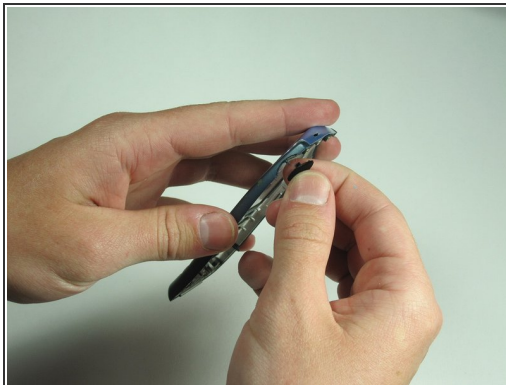
- After removing the screws, the two halves will separate. If not, then pry them gently apart.

## Step 5



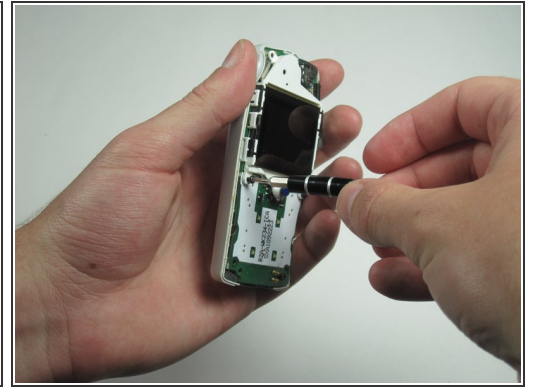
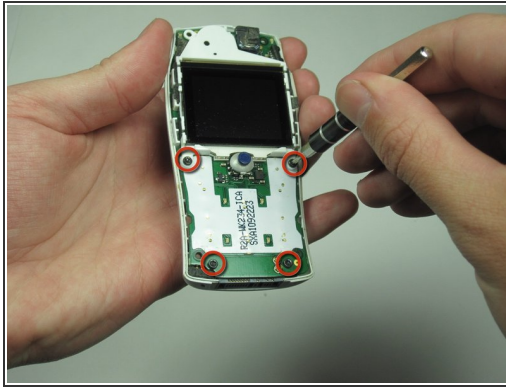
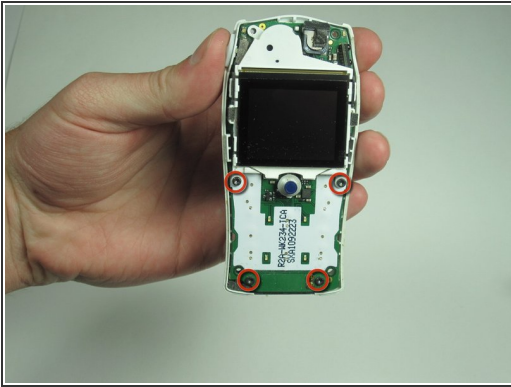
- Pull off the keypad.

## Step 6



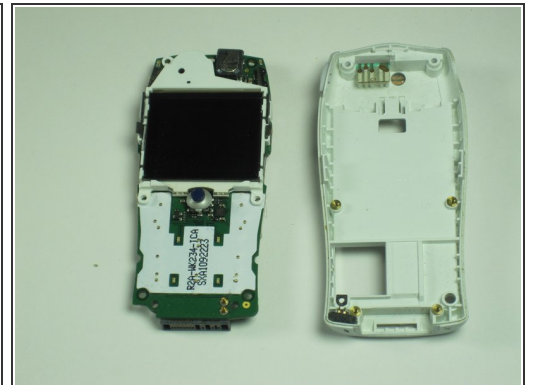
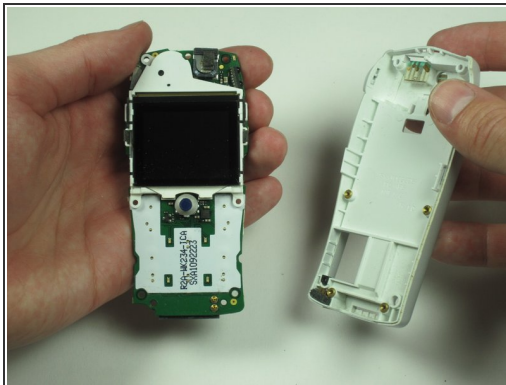
- Gently pull off the infra red window and the vibra motor.

## Step 7



- Remove the circuit board and screen from the device.
- Use your T6 to remove the 4 screws holding the cover on.

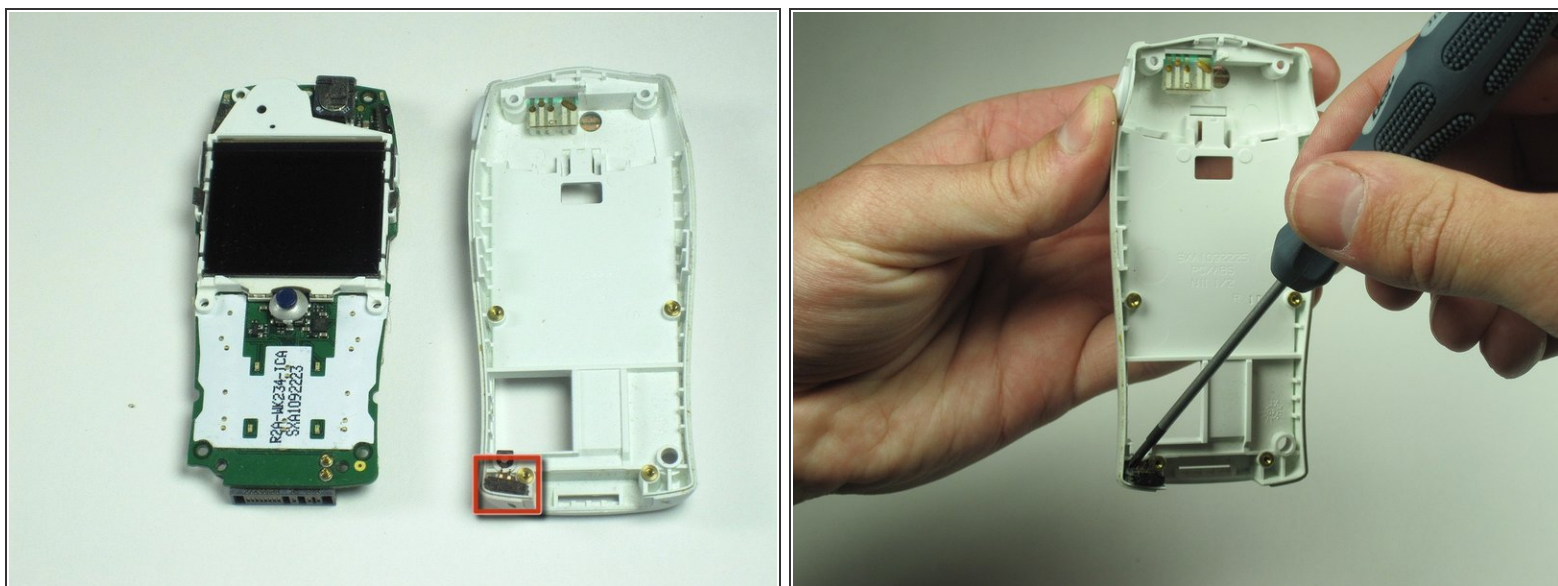
## Step 8



- Remove the board and screen.

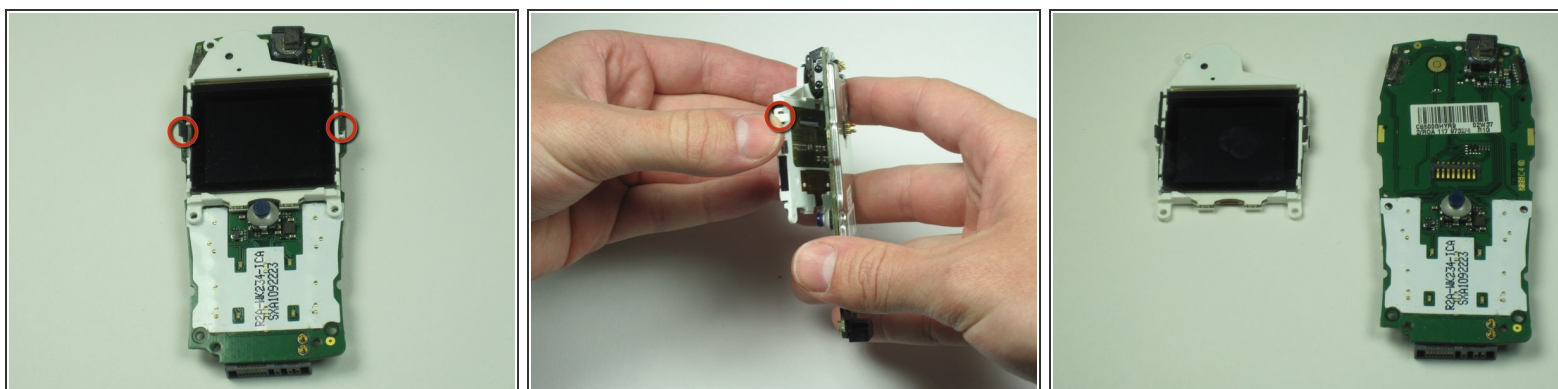


## Step 9



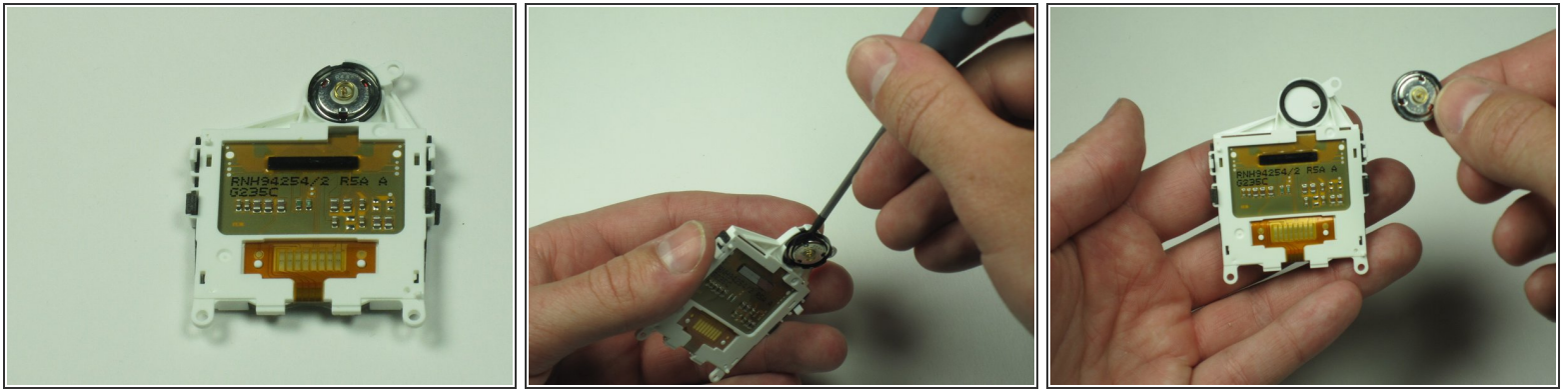
- Lever out the microphone using a small screwdriver or any similar tool.

## Step 10



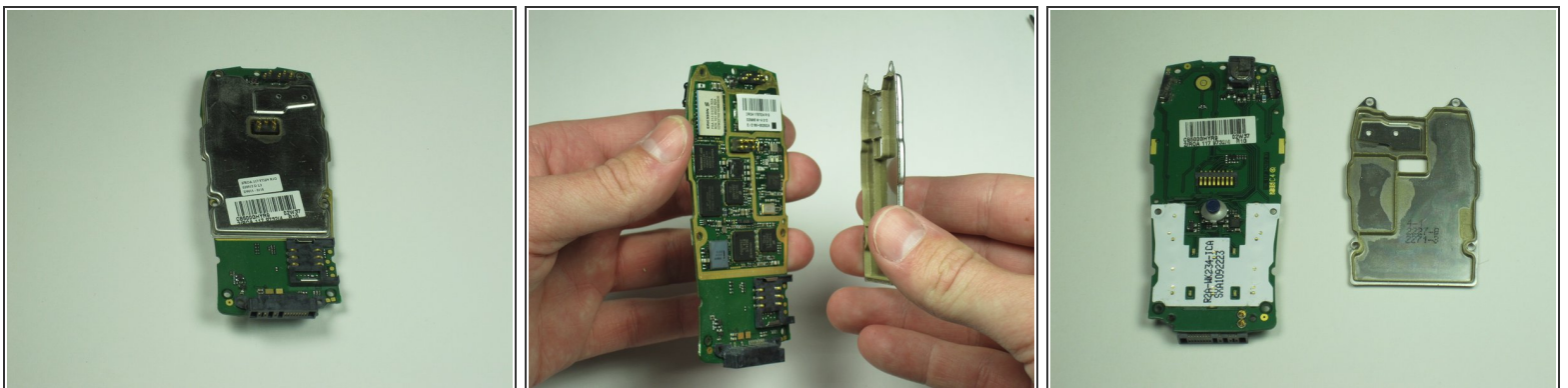
- Carefully remove the plastic clips holding the screen on the board.

## Step 11



- Remove the speaker located in the screen housing just above the screen.
- Gently pry it out with a small screwdriver or similar tool.

## Step 12



- Remove the plate from the circuit board protecting the more delicate processing parts.



## Step 13



- Congratulations, you have successfully disassembled your Sony Ericsson T68i!

To reassemble your device, follow these instructions in reverse order.