



# Disassembling Sony Ericsson W200i Core

Guide to remove the core of the Sony Ericsson W200i.

Written By: Emily Prescott



---

## INTRODUCTION

Removing the core is easy, but you will be removing 4 screws, so make sure you have a place to put them for safe-keeping.

---

### TOOLS:

- [iFixit Opening Tools](#) (1)
  - [T6 Torx Screwdriver](#) (1)
-

## Step 1 — Disassembling Sony Ericsson W200i Battery



- Slide the battery cover up and off the phone.

## Step 2



- Pop the battery out of its slot by lifting it up.

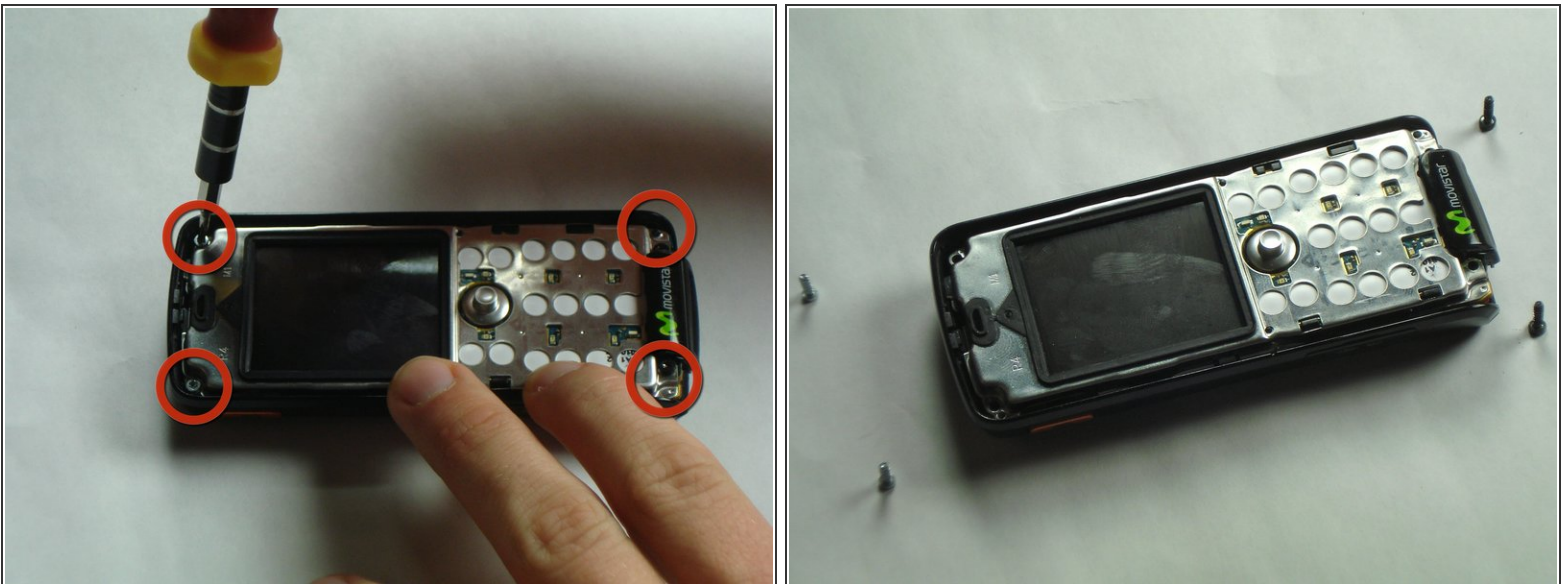


## Step 3 — Front Case



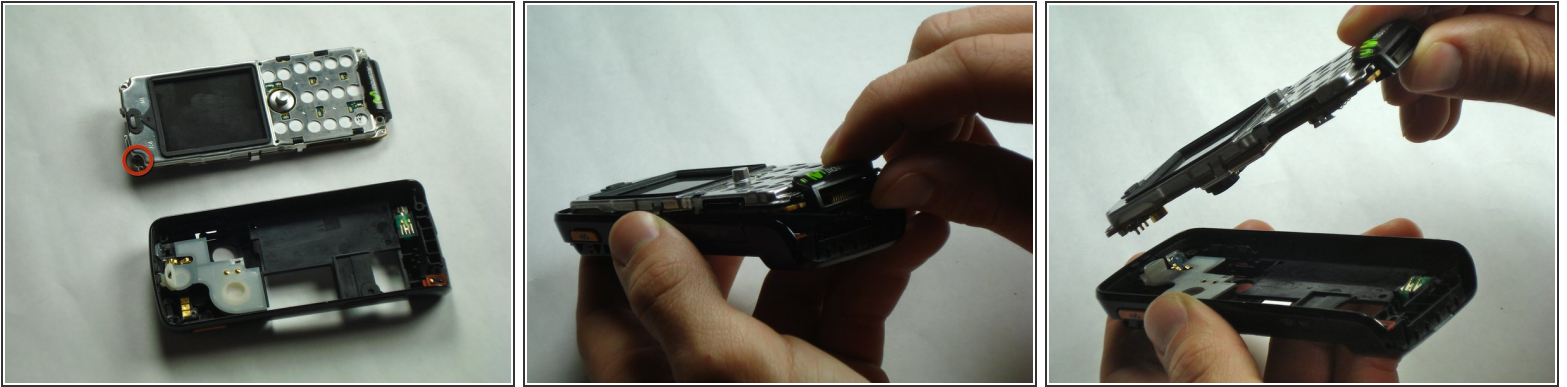
- Insert the plastic opening tool in between the front case and the back case.
  - Apply downward pressure to make the case lift upwards, thus popping the front case off.
- ⚠ Use caution when removing the front case. It may seem stuck but just ease it out.

## Step 4 — Core



- Remove the 4 screws in the corners of the front of the phone using a T6 screwdriver.
- ⓘ Note that the top 2 screws are silver and the bottom 2 screws are black.

## Step 5



- There is a black tab in the top left corner holding the core in place.
- Remove the core by pulling straight up to prevent breaking the tab.

To reassemble your device, follow these instructions in reverse order.