



# Disassembling Sony Walkman NWZ-E438

Opening the back panel of the Sony Walkman, you can gain access to the inside.

Written By: Cheyanne Casey Shook



---

## INTRODUCTION

The Walkman uses a screwdriver to open the back of the device.



### TOOLS:

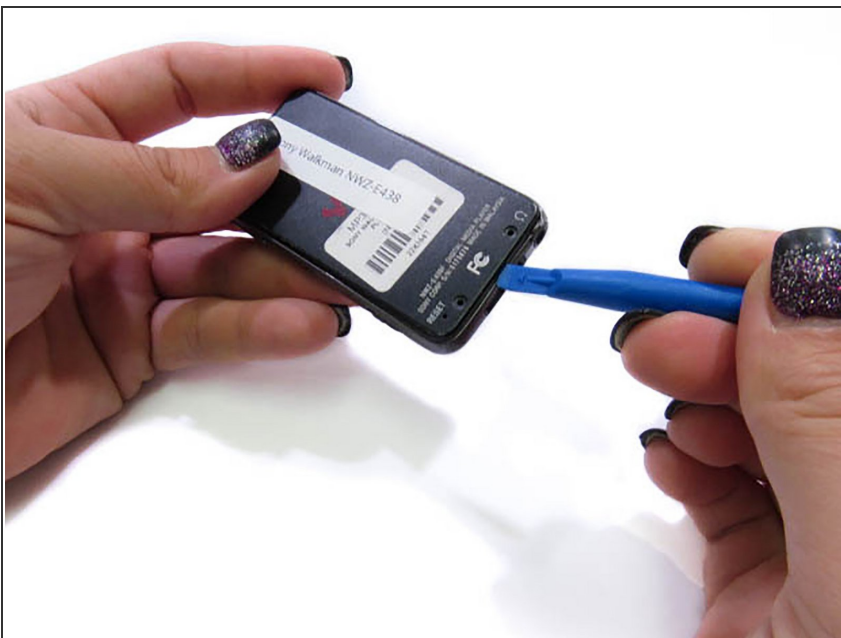
- [Phillips #000 Screwdriver](#) (1)
  - [iFixit Opening Tools](#) (1)
-

## Step 1 — Disassembling Sony Walkman NWZ-E438



- Unscrew the two screws on the back of the device using a Phillips PH000 screwdriver.
- ⓘ Keep the Phillips PH000 screwdriver aside for further steps in the guide. It will be the only screwdriver needed for this replacement.

## Step 2



- Use a small prying tool to carefully pry open the back of the device.

To reassemble your device, follow these instructions in the reverse order.