



# Disassembling Sony Xperia J External Features

Prerequisite Only

Written By: Andres Pico



---

# INTRODUCTION

Prerequisite Only



## TOOLS:

- [iFixit Opening Tools](#) (1)
  - [T5 Torx Screwdriver](#) (1)
  - [Tweezers](#) (1)
-

## Step 1 — External Features



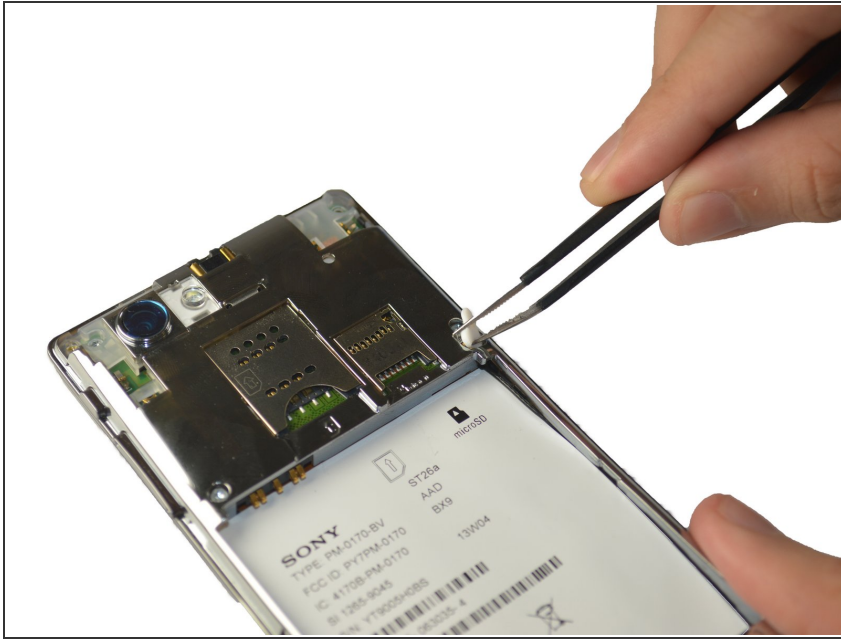
- You will need a Torx T5 screwdriver, plastic opening tool, and a pincet for this operation.

## Step 2



- Find the little bracket on the bottom left of the phone (when looking at it upside down) and use the opening tool to pry off the back cover.

## Step 3



- Remove the silicone cover by squeezing it with the tweezers, there is not much pressure needed.

## Step 4



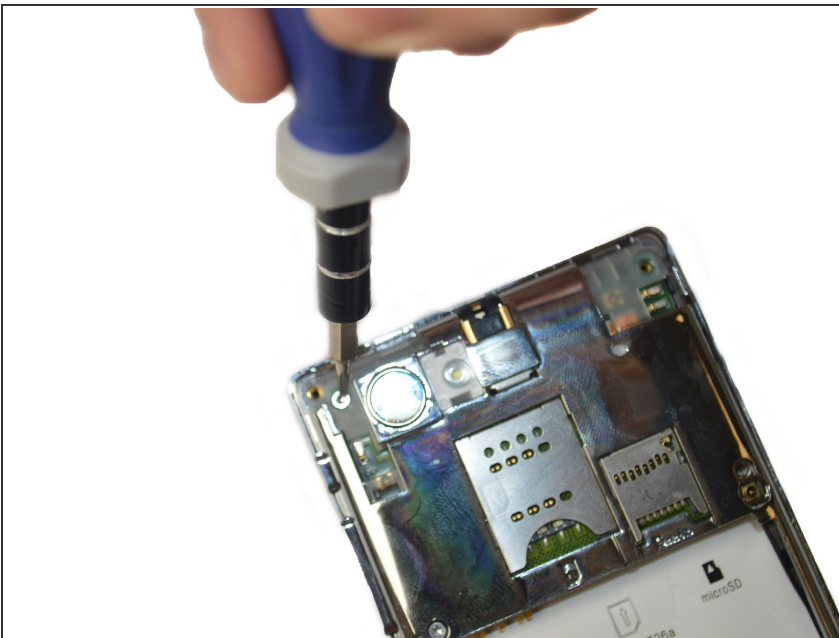
- Using the Torx T5 screwdriver remove the four 4.74mm screws.
- Then remove the two 3.13mm screws
- Lastly remove 5.90mm screw.

## Step 5



- Using the tweezers remove the black plate at the bottom of the phone. First insert the tweezers tip at the intersection between the black plate and phone, then just pull the plate up.
- Repeat the same steps to remove the black plates located at the top left, and top right of the phone.

## Step 6



- After removing the top left black plate, you will find another 3.13mm screw. Just remove it by using the screwdriver.

## Step 7



- Place the plastic opening tool in-between the black external case of the phone and the silver case, then move it along the edges of the phone to detach the plates.

To reassemble your device, follow these instructions in reverse order.