



Disassembling The Teac DC-D2831

This guide will demonstrate how to disassemble the Teac DC-D2831. This will allow you to identify issues and begin to repair the device.

Written By: Jake Hamilton



INTRODUCTION

This will walk you through the steps necessary to access crucial parts inside the player, to make adjustments or repairs. Electronics are delicate, so be sure to take caution when making modifications and during reassembly. Needlenose pliers are a must for removing the snap ring!




TOOLS:

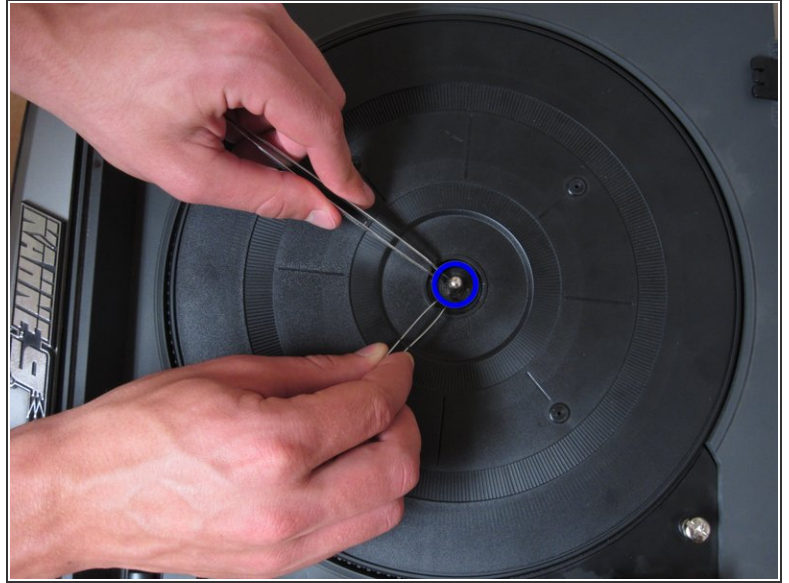
- [Large Needle Nose Pliers](#) (1)
 - [Phillips #1 Screwdriver](#) (1)
 - [Large Needle Nose Pliers](#) (1)
-

Step 1 — Record Player



 Make sure the device is turned off and unplugged. This will eliminate the danger of getting electrocuted while repairing the device.

Step 2



- Lift the lid to get to the turntable.
- Using the appropriate tools (needle-nose pliers, tweezers, screwdriver, etc.), remove the snap ring from the center of the turntable. The snap-ring is the small metal ring around the axel of the turntable.
- ⓘ The snap-ring is hard to remove so be patient and don't be afraid to use some force.
- ⓘ Feel free to use whatever tool(s) that will remove the snap-ring. The above list of tools are just a suggestions.

Step 3



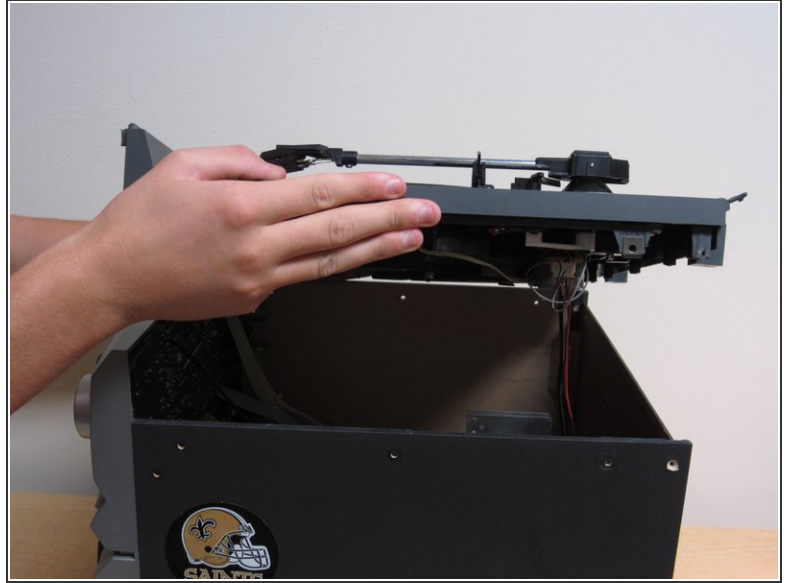
- Once the snap ring is removed, gently lift the turntable from the rest of the device.
- If the device has a faulty belt, see the belt repair guide here: [Belt Repair Guide](#)
- If it does not, continue with the disassembly.

Step 4



- Remove the screws on the side of the device using a Phillips 2 screwdriver.
- When removing the screws, take note of which screws go where.
- 27.0mm
- 19.8mm
- 15.9mm
- 12.0mm

Step 5



- Lift the base that the turntable was resting on from the rest of the device.

⚠ Remove the base slowly so to not sever the connection with the wire attached from the base to the circuit board.

Step 6



- If the device is having motor issues, continue here: [Motor Repair Guide](#)
- If the device is having issues with the display, continue here: [Volume Control Knob](#)

To reassemble your device, follow these instructions in reverse order.