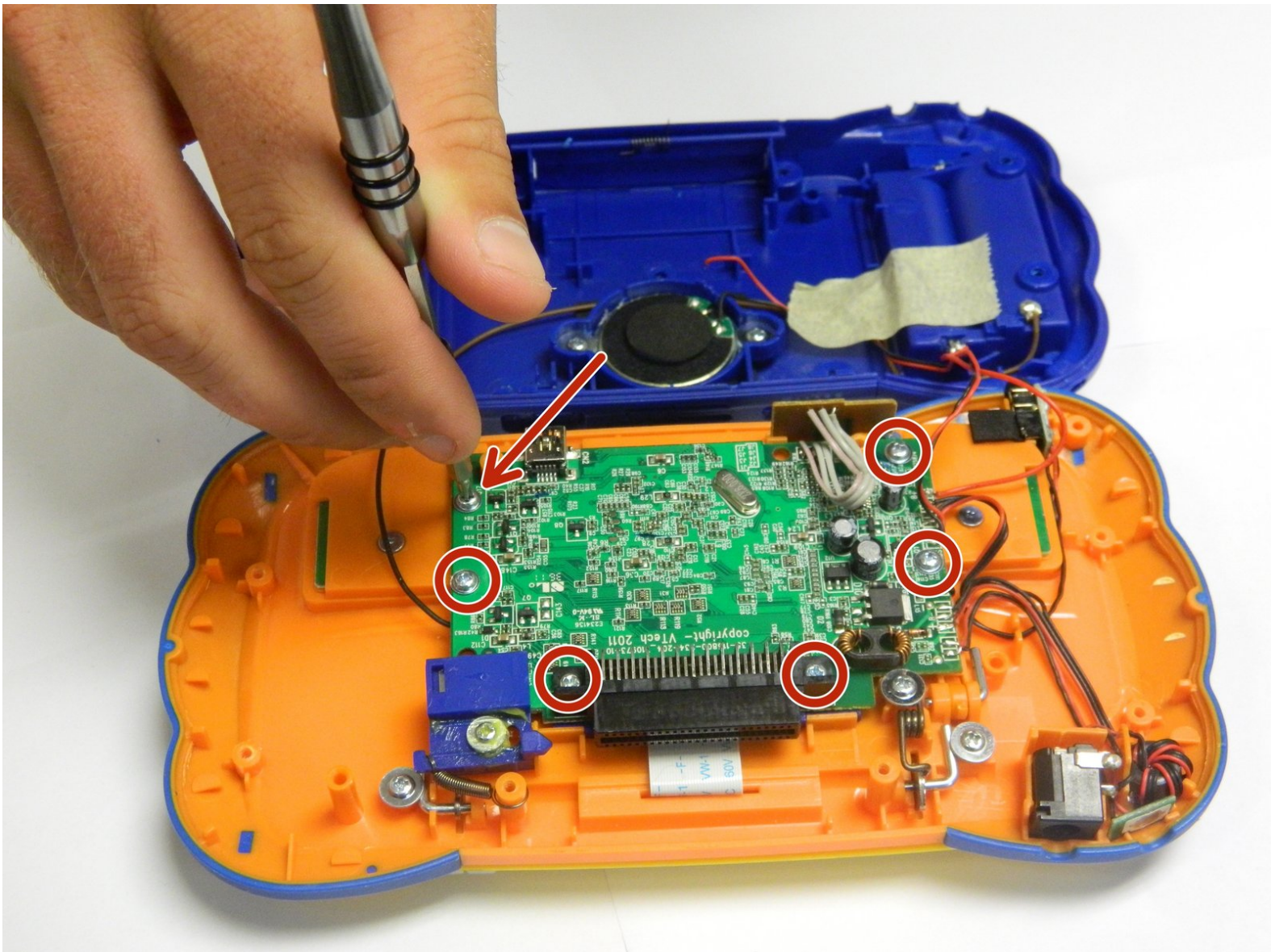




Disassembling VTech MobiGo Touch Learning System Keyboard

This is a short guide to disassemble the VTech MobiGo Touch Learning System Keyboard. Prior to this guide, you will need to refer to the Disassembling guide for the case.

Written By: RBansil



INTRODUCTION

This is a step by step guide to show how to replace the keyboard.



TOOLS:

- [Screwdriver](#) (1)
 - [Solder Vacuum](#) (1)
 - [Soldering Iron](#) (1)
 - [Magnetic Project Mat](#) (1)
 - [Metal Spudger](#) (1)
 - [iFixit Opening Tools](#) (1)
-

Step 1 — Case



- Remove the battery covers and the four batteries.

Step 2



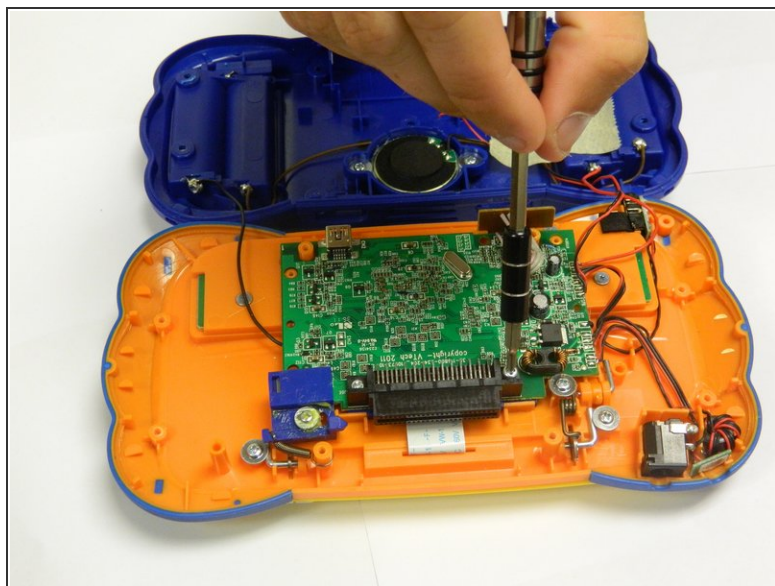
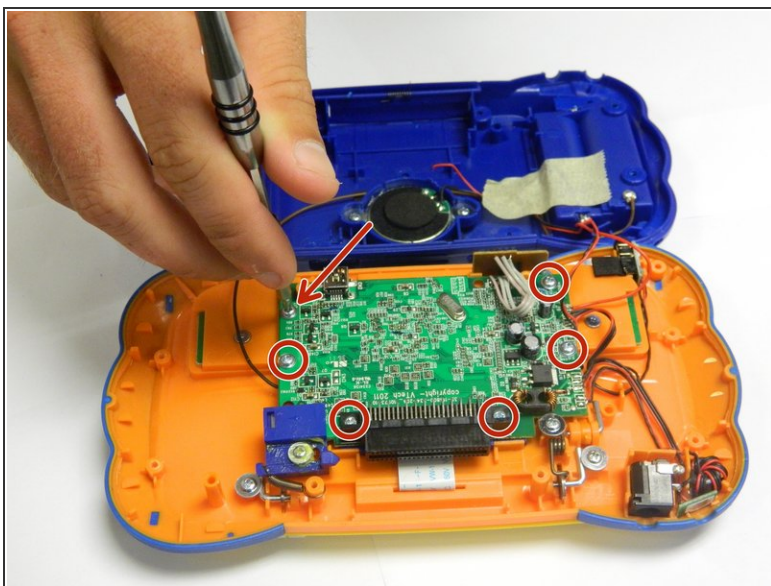
- Remove the four plastic caps with a metal spudger to expose the 6.0 mm Philips JIS #0 case screws.
- Remove the eight 6.0 mm JIS #0 case screws.

Step 3



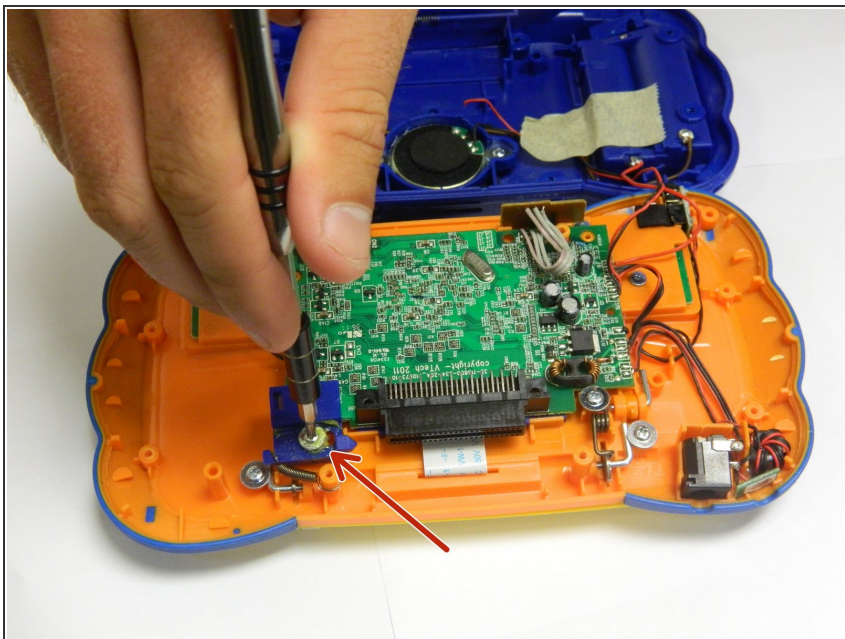
- Using a plastic opening tool, separate the two pieces of the case carefully.

Step 4 — Disassembling VTech MobiGo Touch Learning System Keyboard



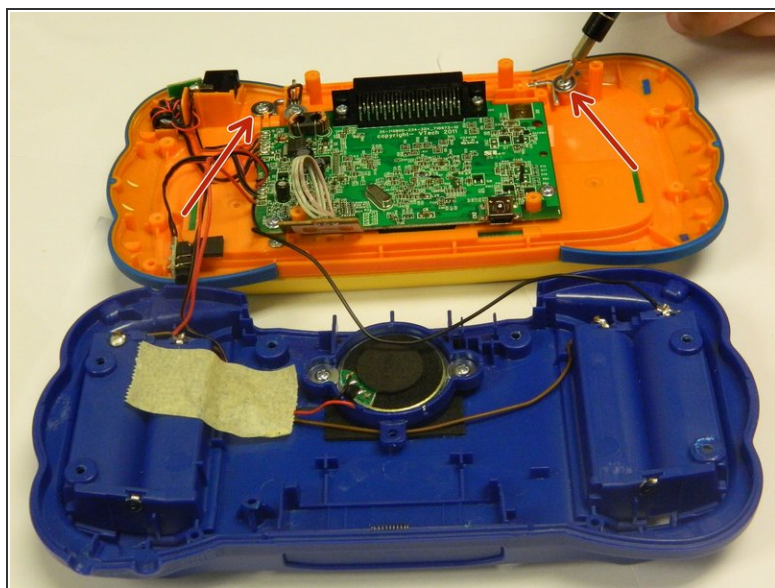
- Remove the six 6.5 mm Philips J0 screws that are connected to the circuit board.
⚠ Use light pressure to prevent damage to the circuit board.

Step 5



- Remove the 9.0 mm Philips J0 screw from the blue plastic cover.
- Once the screw is removed, remove the blue plastic cover.

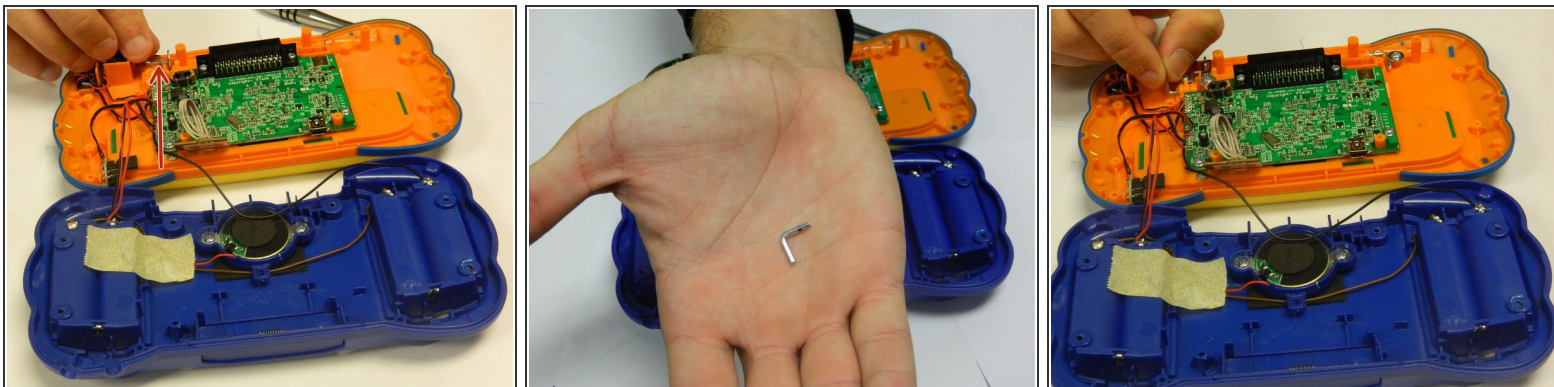
Step 6



- Remove the two 4.0 mm Philips J0 screws located on the orange case.

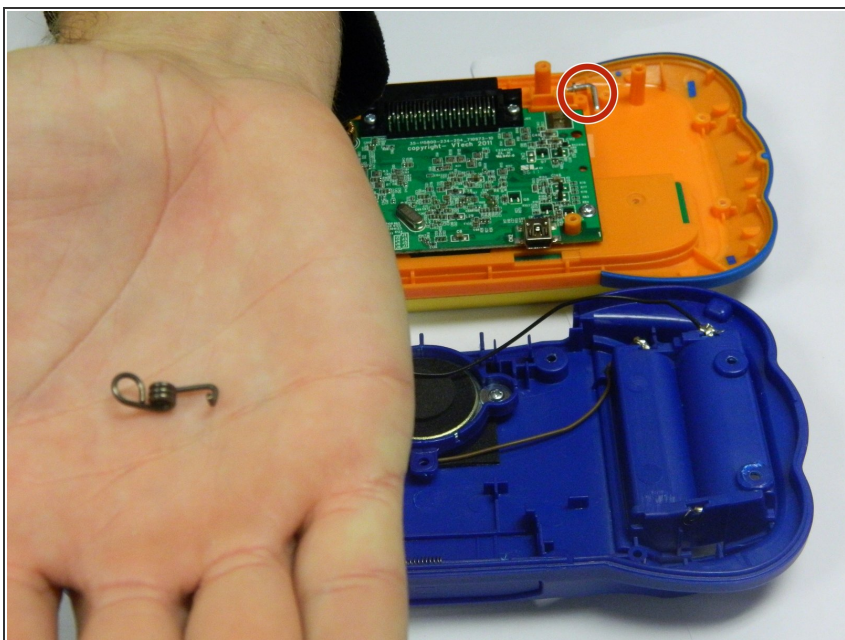
⚠ Use gentle force to prevent stripping of screws.

Step 7



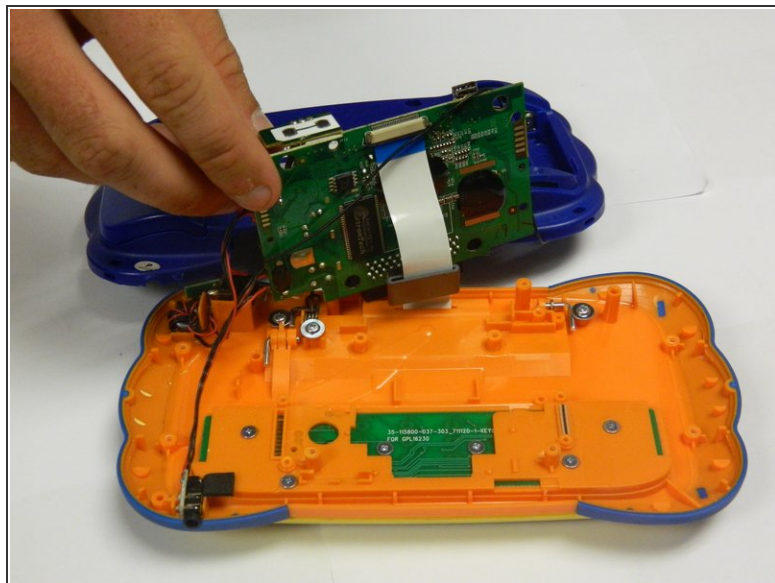
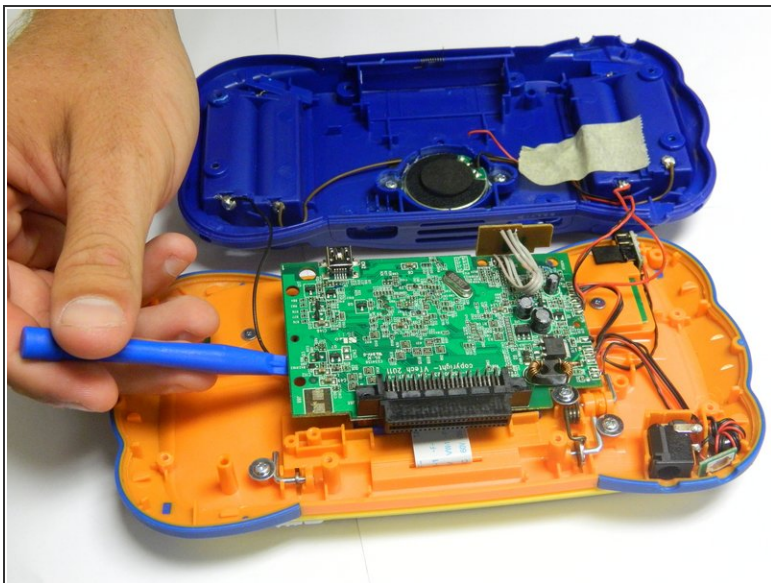
- Remove the two "L" shaped brackets located on both sides of the device.
- ① Use the magnetic mat to store these brackets.

Step 8



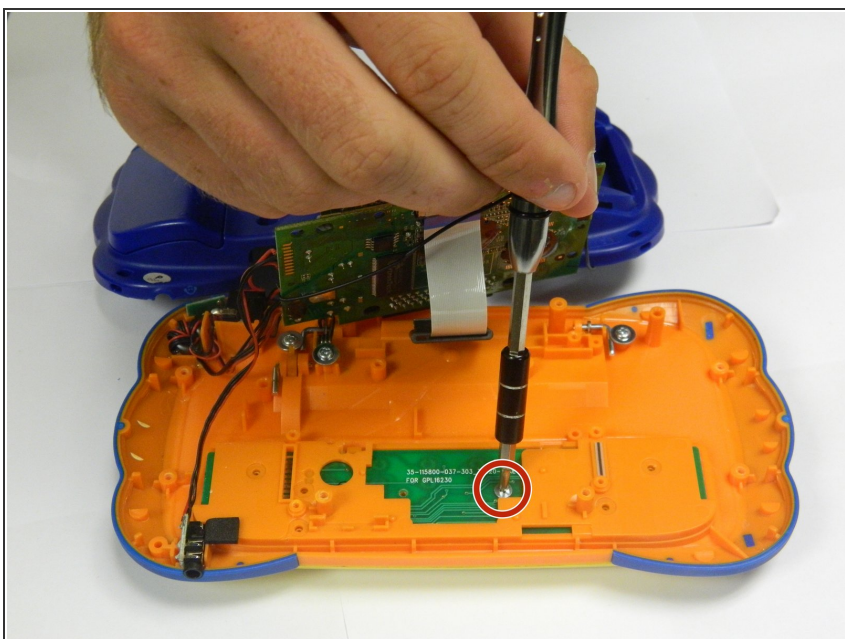
- Locate the spring that was connected to the "L" shaped bracket and **slowly** remove it.

Step 9



- Gently lift the circuit board from the case using a plastic opening tool.
- ① Make sure to use a plastic opening tool for this step.

Step 10



- Remove the 3.5 mm Philips J0 screw located underneath the circuit board.
- ⚠ Keep the circuit board out of the way to avoid damaging it.

Step 11



- Slowly remove the keyboard panel.
- ⓘ Use a spudger if necessary.
- ⓘ The keys will fall out once the keyboard panel is removed.
- Remove all of the keys and set them aside with the keyboard panel.

Step 12



- Gently remove the keyboard circuit board with a plastic opening tool.

To reassemble your device, follow these instructions in reverse order.