



# Disassembling VuPoint DC-ST210-VP Back Plate

Open the camera to view the internal contents

Written By: Elise Brown



---

## INTRODUCTION

This guide can be a prerequisite for all other (internal component) replacement guides for the VuPoint DC-ST210-VP. However, it can also be used to replace the housing of the camera. Completing this guide will expose the internal circuit board, camera screen, and all other internal parts of the camera. Be sure to store all loose parts of the camera on a magnetic board or in some other safe place for re-assembly.



### TOOLS:

- [Phillips #00 Screwdriver](#) (1)
  - [iFixit Opening Tools](#) (1)
-

## Step 1 — Turn Off/Remove Batteries



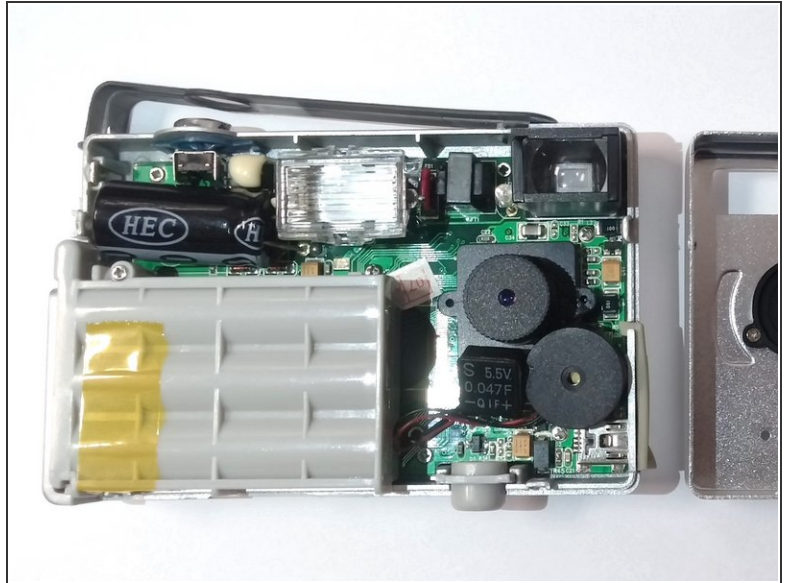
- Hold the on/off button for 3 seconds until the screen is black.
- Remove batteries by placing thumb on battery plate cover sliding it down to expose batteries.
- Turn camera upside down to allow the batteries to fall out.

## Step 2 — Remove Screws



- There are 5 (4.5mm in length) screws on the sides of the camera that need to be removed. Use a Phillips #000 screwdriver to remove all screws.
- Remove 2 screws on the right side of the camera, and store them on a magnetic mat.
- Remove 2 screws on the bottom of the camera, and store them on a magnetic mat.
- Remove 1 screw on the left side of the camera, and store it on a magnetic mat.

### Step 3 — Pry Backplate Off



- Using a prying tool or fingernail, gently separate the back plate from the front plate, exposing the inside of the camera.

To reassemble your device, follow these instructions in reverse order.