



# Disassembling Xelio P1001A-BK Removing the Back Cover

This guide takes you through how to remove the cover of the Xelio P1001A-BK tablet so that further troubleshooting and repairs can be made. Additional disassembly instructions will be included in specific repair guides as full disassembly is not required

Written By: Josh Saenz



## INTRODUCTION

Removing the back cover of this tablet is fairly simple and straight forward. It requires removing two small screws located on the end of the tablet where the power, micro-USB, SD card and headphone ports are located. Once the screws are removed a thin blade flat head screw driver is all that is needed to pry apart the two shell halves of the tablet.

There are four securing tabs along both long sides of the tablet shells which are disengaged by gentle prying them apart with the screw driver. Once the tabs are disengaged the shell halves can be easily separated. Be careful, though. The speakers reside in two housings on the back shell half and connect to the mother board with two very thin wires each. The tablet speakers have magnets on their backs which should make them stick to the metal shell protecting the back of the screen. However, if the speakers stay attached to the back shell half, gently pry them out of the sockets before completely separating the shell halves.

---

### TOOLS:

- [iFixit Opening Tools](#) (1)
  - [Phillips #0 Screwdriver](#) (1)
-

## Step 1 — Removing the Back Cover



- Locate screws at each corner on the side of the tablet

## Step 2



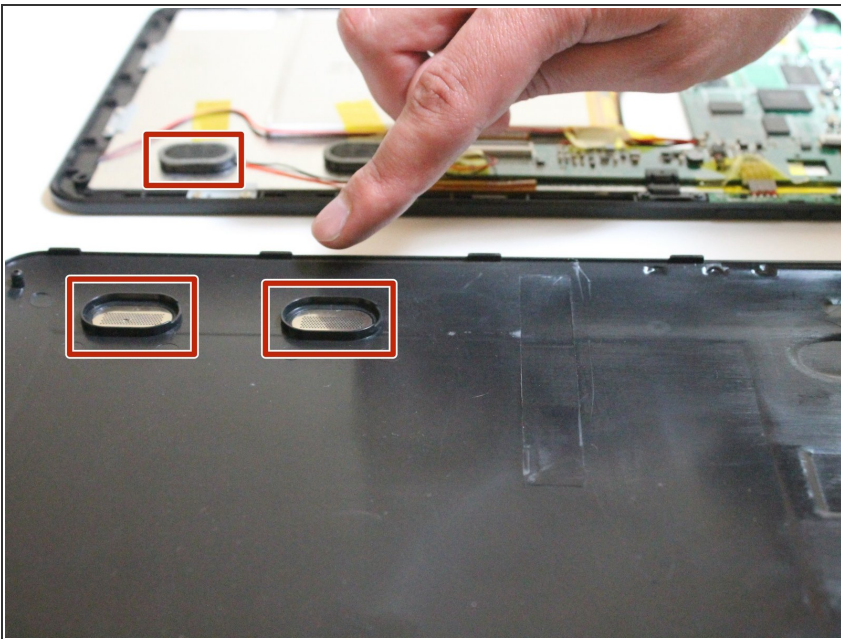
- With a Phillips #0 screwdriver, remove the two 3mm x 1mm retaining screws
- ⓘ Store the screws in a plastic bag or other appropriate container.

### Step 3



- Using the plastic opening tool, disengage the securing tabs that are along the two long sides of the tablet, four on each side.
- Slowly rotate up the side of the tablet opposite from the control buttons.

### Step 4



- ⚠ Before fully separating the shell halves, observe if the speakers are separated from the shell half
- If they are, the shell half can be fully separated from the front shell half
- If they are still in their sockets, gently pry them loose with the plastic opening tool.

To reassemble your device, follow these instructions in reverse order.