



# Disassembling Yamaha YPG-225 Faceplate

This guide will assist you in disassembling the faceplate of the keyboard.

Written By: Lonnie Bissmeyer



## INTRODUCTION

Removing the face plate is necessary for most repairs to this device. Removing the face plate is a relatively simple process, requiring only the removal of several screws.

---

### TOOLS:

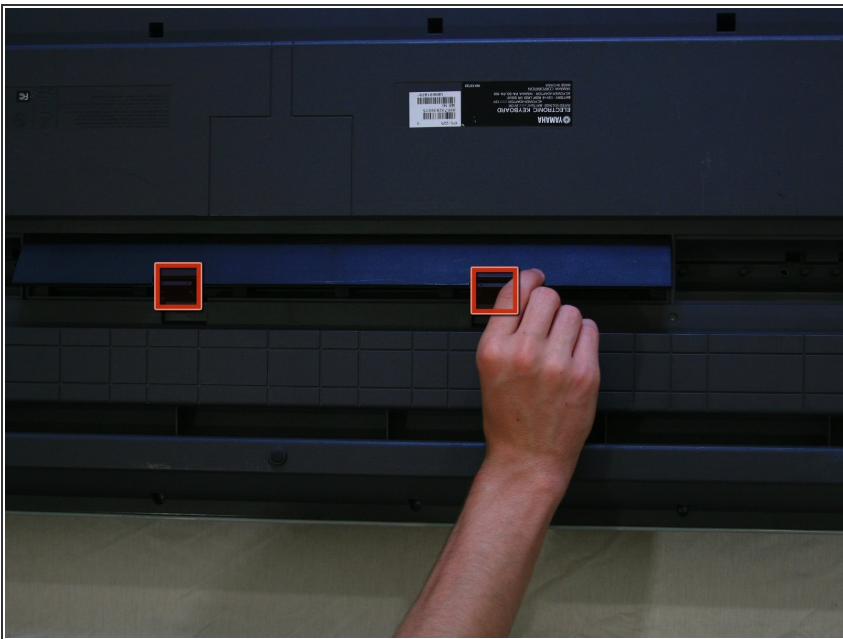
- [Phillips #2 Screwdriver](#) (1)
  - [Magnetic Pickup Tool](#) (1)
-

## Step 1 — Batteries



- Turn the keyboard over so that the keys are facing the ground.

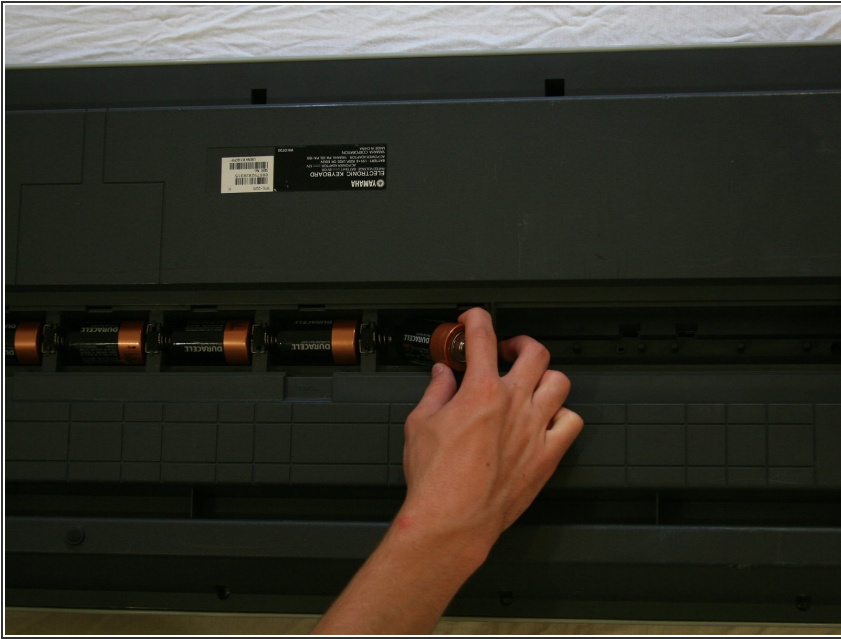
## Step 2



- Pop the tabs on the battery casing and remove it from the back plate.

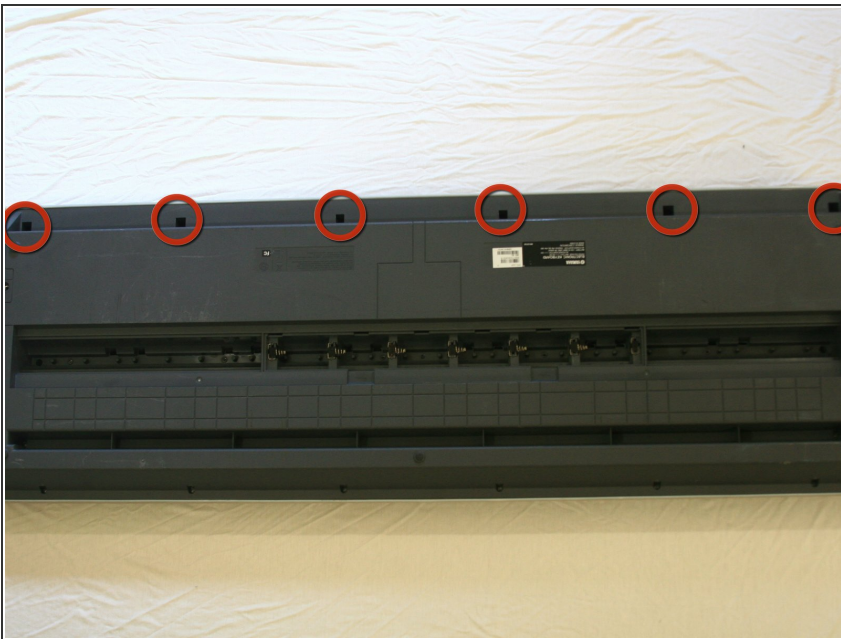


### Step 3



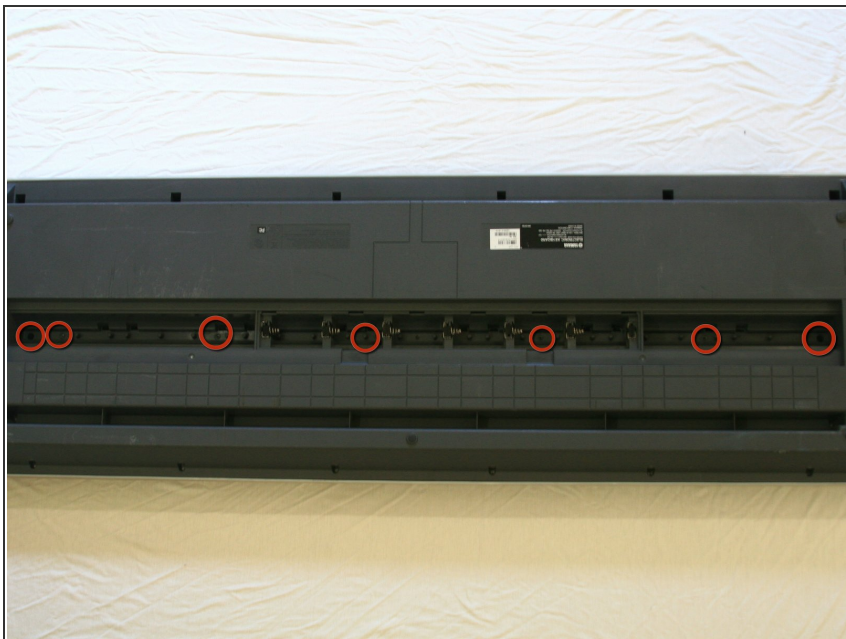
- Locate the six batteries and remove them from the battery cavity.

### Step 4 — Faceplate



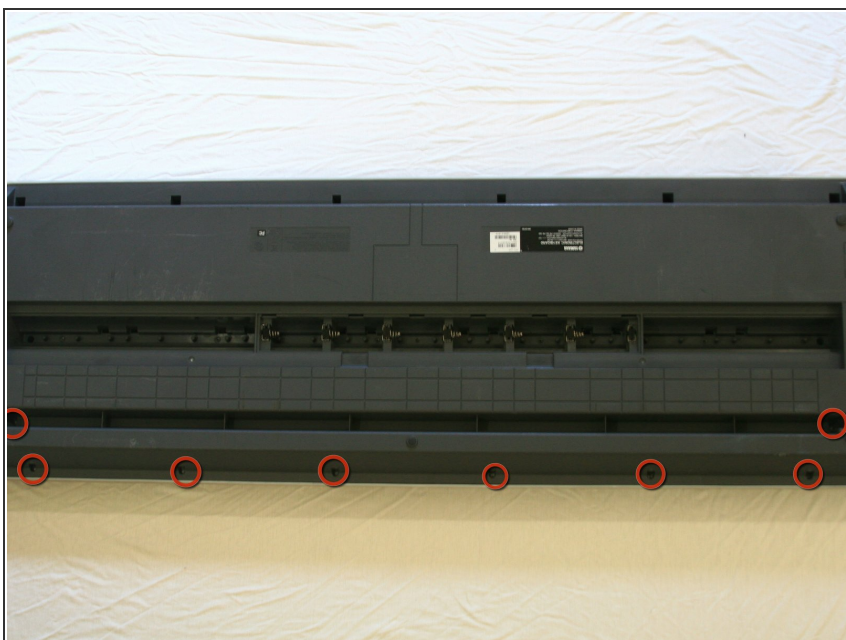
- Remove the six 10mm screws at the top of the backplate.

## Step 5



- Remove the seven 12mm screws in the middle of the back plate.

## Step 6



- Remove the eight 10mm screws from the side and the bottom of the back plate.



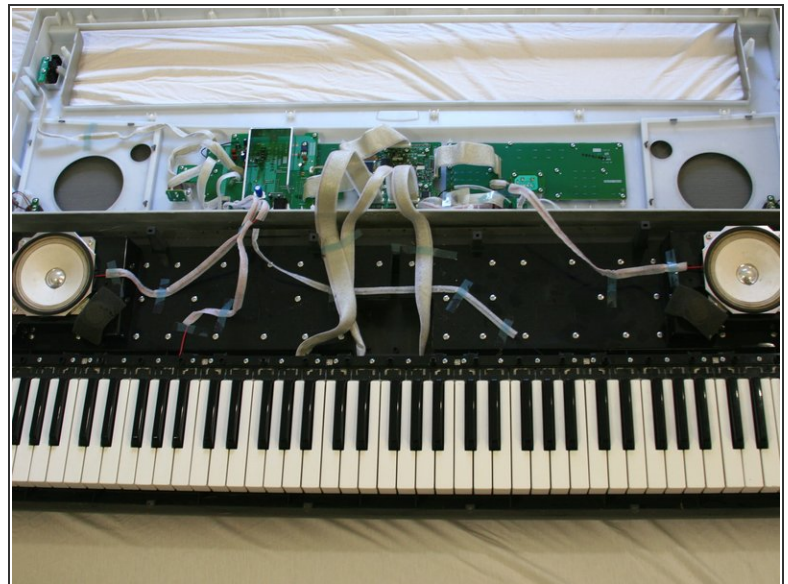
## Step 7



**⚠** As the face plate is no longer connected to the body of the keyboard, be careful to not drop the body when performing this step.

- Flip over the keyboard.

## Step 8



- Lifting from the front and the back of the face plate equally, pull the face plate up and then back, away from the keyboard.

**⚠** Be careful when removing the face plate. There are wires attached.

To reassemble your device, follow these instructions in reverse order.