



Disassembling iHome iP21 Main Housing

Prerequisite guide to remove the main housing from iP21 for repair.

Written By: Brandy



INTRODUCTION

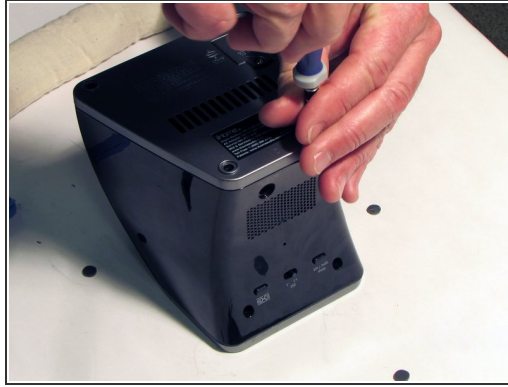
Prerequisite guide to remove the main housing from iP21 for repair.



TOOLS:

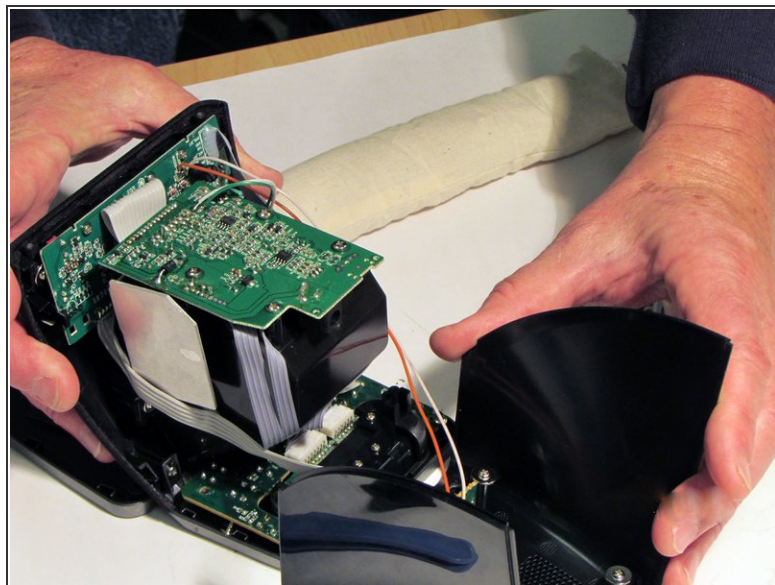
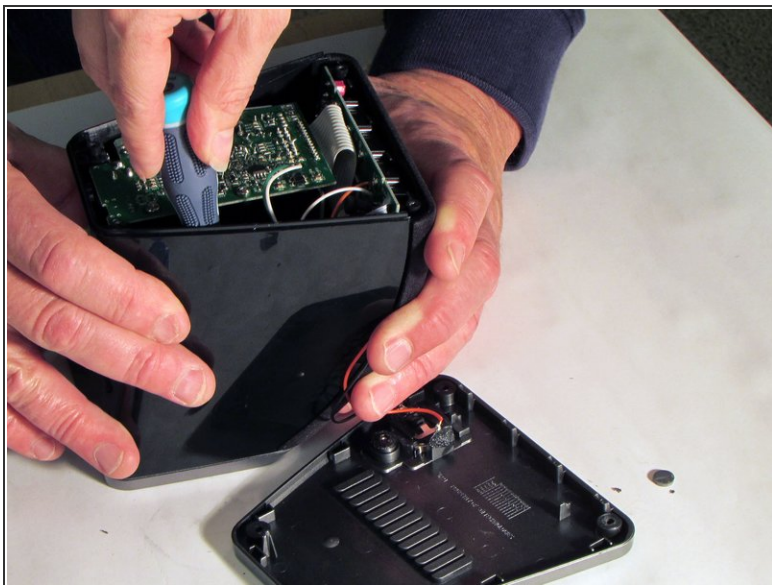
- [Phillips #1 Screwdriver](#) (1)
 - [Spudger](#) (1)
 - [Phillips #2 Screwdriver](#) (1)
-

Step 1 — Base



- Pry the four rubber feet from the bottom of the iP21 to expose four 11mm screws.
- Unscrew the four 11mm screws from the base.
- Pry the base loose using the spudger.
- Remove the base by hand.

Step 2 — Housing



- Remove the two black 6mm screws connecting the main circuit board to the housing top.
- Grasp front housing and back housing firmly.
- Gently pull front housing from the back housing.

To reassemble your device, follow these instructions in reverse order.