



Disassembling the Canon PowerShot A200 Case

Opening the case.

Written By: Daniel Stone



INTRODUCTION

These are instructions to disassemble the camera case so that internal components can be accessed.

This is a prerequisite guide for repairs to the Canon PowerShot A200.

TOOLS:

- [Phillips #00 Screwdriver](#) (1)
 - [iFixit Opening Tools](#) (1)
-

Step 1 — Disassembling the Canon PowerShot A200 Case



- Use the *Phillips head screwdriver*, rotating counterclockwise, to remove the two screws at the bottom of the camera. Set screws aside.

Step 2



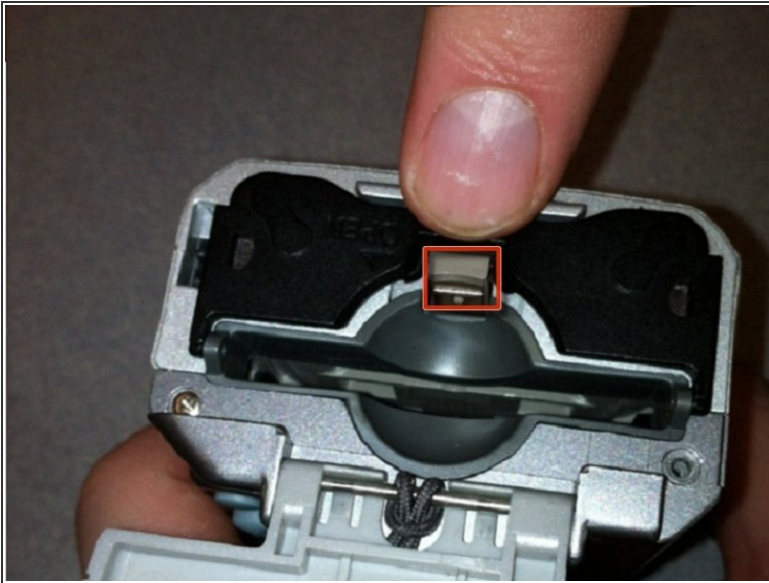
- Hold the camera right side up with the LCD screen facing you. On the left edge of the camera there is one screw visible. There is also a rubber covering. Slide the rubber covering out of the way to expose another screw.
- Use a *Phillips head screwdriver*, rotating counterclockwise, to remove both screws. Set the screws aside.

Step 3



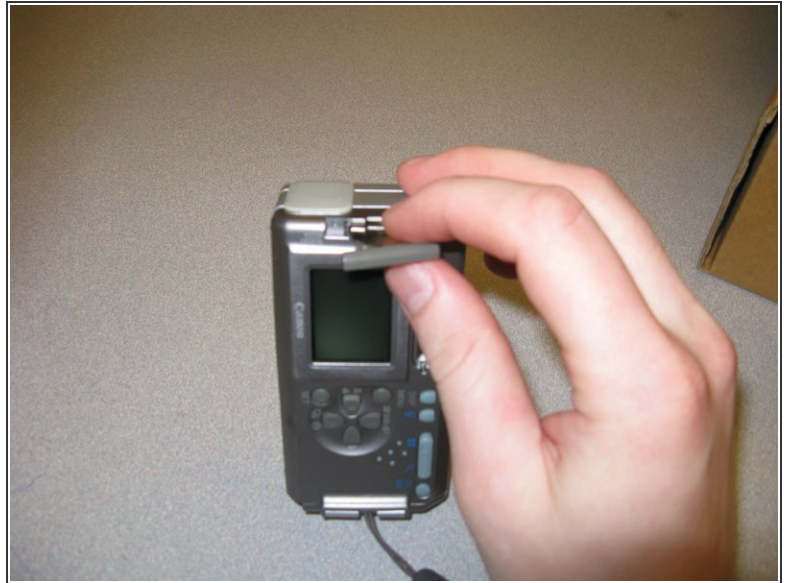
- Hold the camera right side up with the LCD screen facing you. Open the battery compartment on the right side of the camera casing by pushing slightly in the direction of the arrow.
- ⓘ You may see a memory card. If so, remove the card by pushing down on it. When it pops loose, use your fingers to gently pull it out.
- Use the *Phillips head screwdriver*, rotating counterclockwise, to remove the two screws on either side of the memory card slot. Set the screws aside.

Step 4



- Pull the grey tab towards the back of the camera. Lift the black section of the battery cover up, exposing the battery slots.
 - Use the *Phillips head screwdriver*, rotating counter clockwise to remove the two screws on either side of the battery slots. Set the screws aside.
- ⚠ When reassembling the camera it is important that the holes for the screws on either side of the battery slots align properly with the *interior* of the camera body.
- ⚠ When reassembling the camera the black section of the battery cover must lie flat over the battery slots and be held in place by the grey tab. You may have to pull the green part of the *inside* of the camera away from the grey tab in order to move the battery cover into place.

Step 5




- Hold the camera right side up with the LCD screen facing you. Remove the screen battery located to the left of the screen. Set it aside.

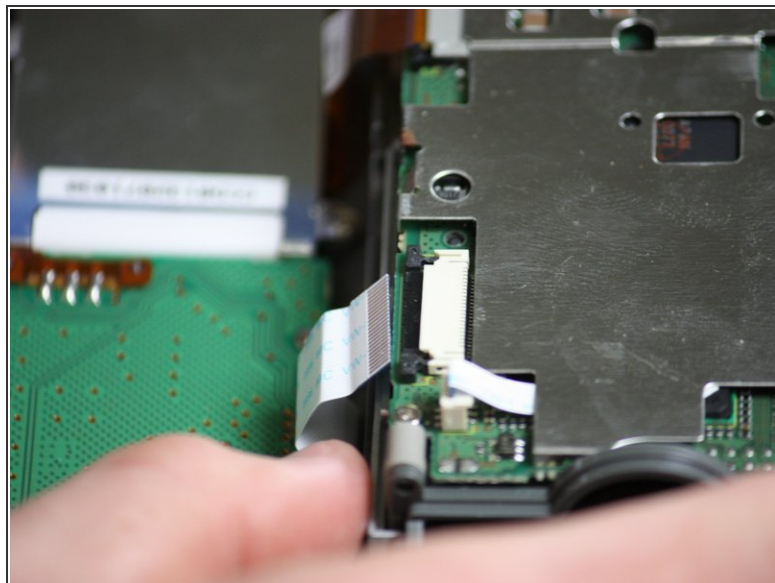
Step 6



- Gently pull the camera apart.

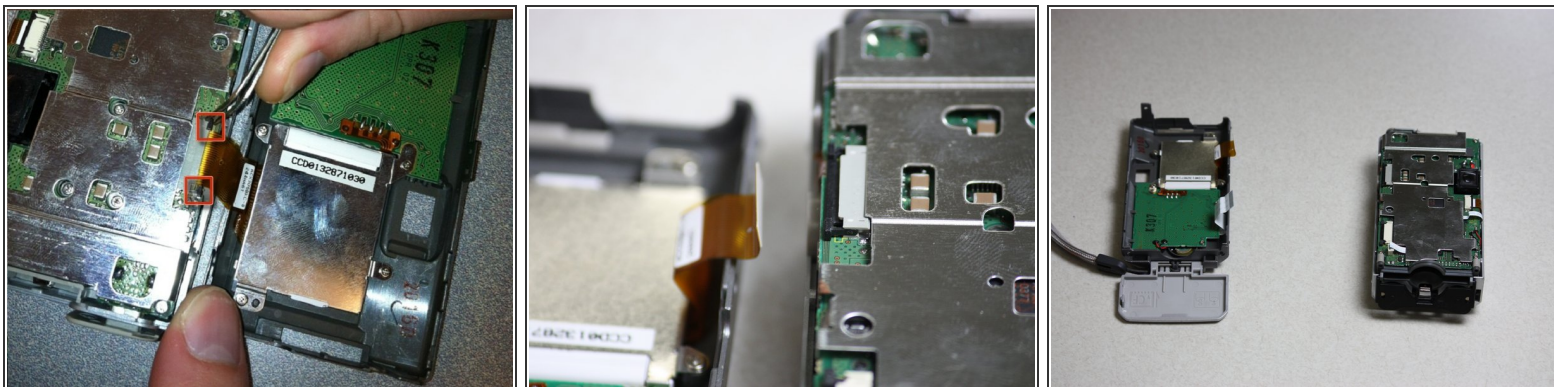
 Be careful. The two halves of the camera are still attached by two short ribbons at the bottom of the camera.


Step 7



- On the front half of the camera, locate the black tabs on either side of the white ribbon.
- Use the *metal tweezers* to gently move the black tabs to the outside edges of the ribbon.
- Gently pull the white ribbon out of the connection.

Step 8



- On the front half of the camera, locate the black tabs on either side of the orange ribbon.
 - Use the *metal tweezers* to gently move the black tabs to the outside edges of the ribbon.
 - Gently pull the orange ribbon out of the connection.
-  Your camera should now be in two separate pieces.

To reassemble your device, follow these instructions in reverse order.