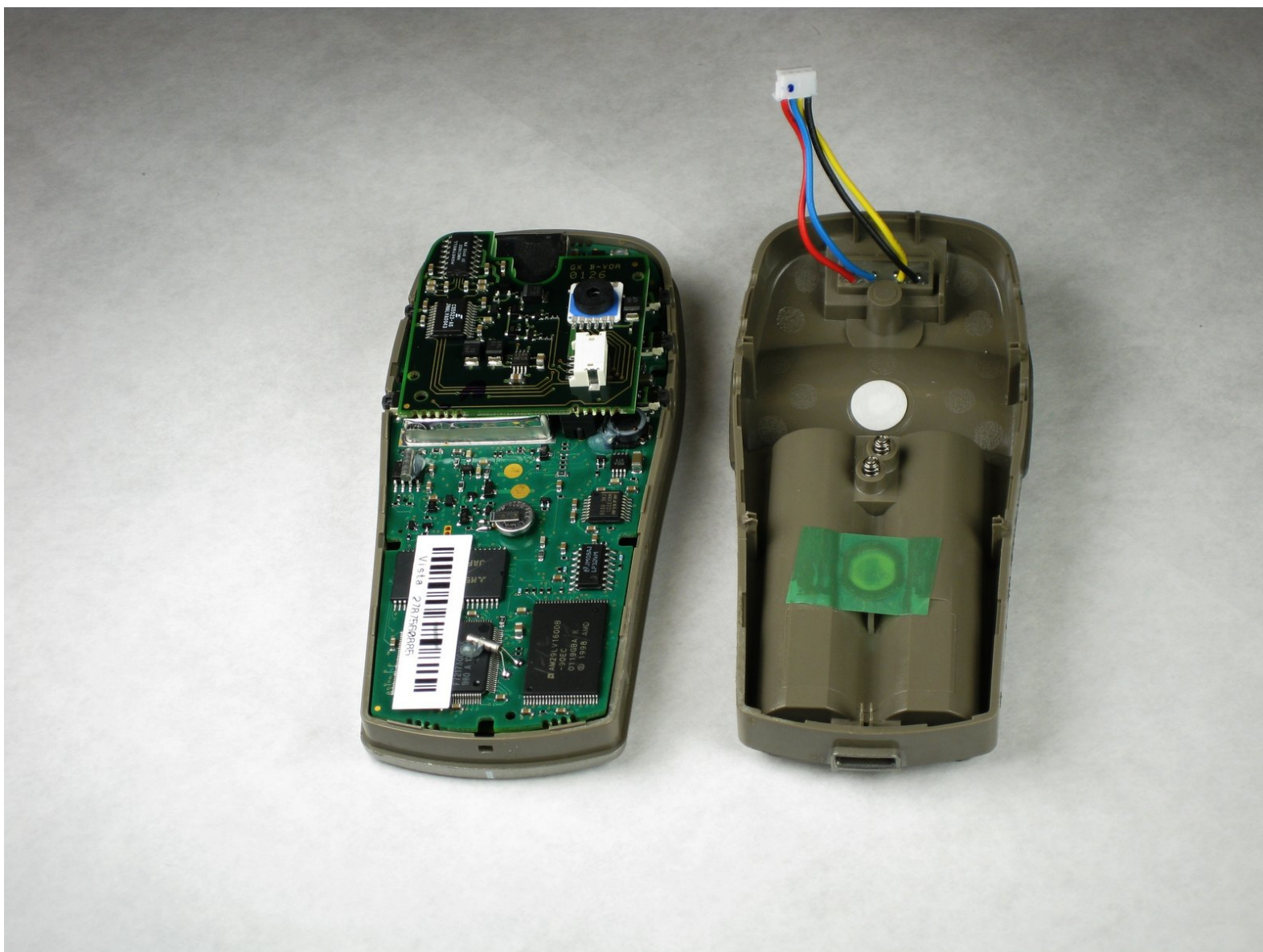




Disassembling the Garmin eTrex Vista-H Outer Case

This guide will show you how to disassemble the outer case of the Garmin eTrex Vista-H to access the inside of the device.

Written By: Ryan Green



INTRODUCTION

This guide will allow you how to access the internal components of the device.



TOOLS:

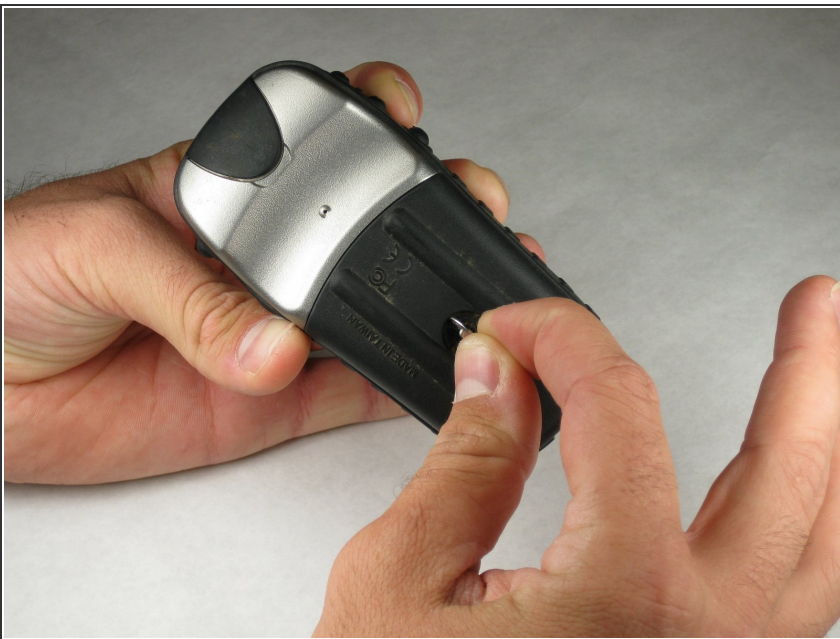
- [Tweezers](#) (1)
 - [Spudger](#) (1)
-

Step 1 — Removing Battery



- Flip the device to the backside, and locate the metal tab at the center of the back cover.

Step 2



- Lift the metal tab up, and rotate it counterclockwise. This will unlock the back case cover.

Step 3



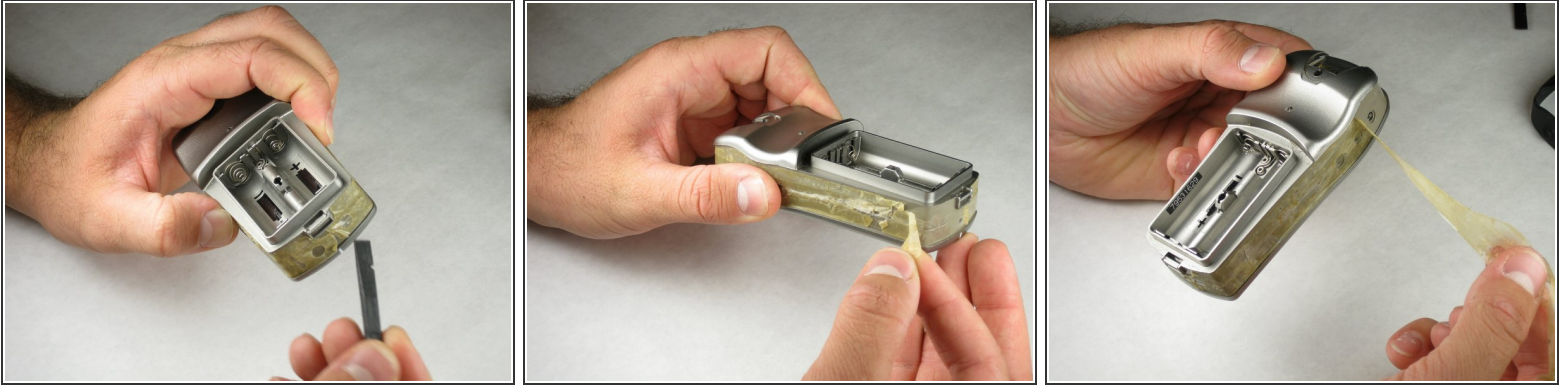
- Lift the battery plate off to either insert or remove 2 AA batteries.

Step 4 — Disassembling the Garmin eTrex Vista-H Outer Case



- With the wedge side of a spudger (or a small, flat head screwdriver), remove the black rubber case support from the device body.

Step 5





- With the pick side of a spudger (or tweezers), peel the sticky tape from the device.

Step 6

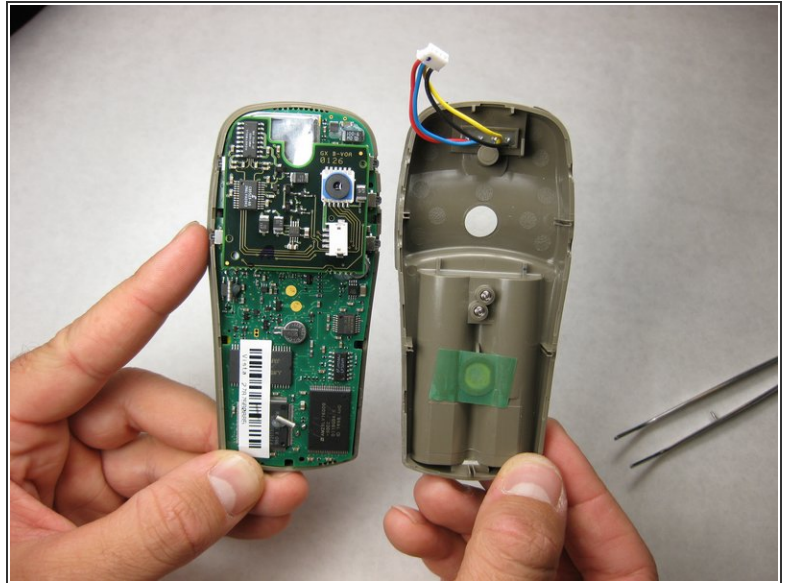


- Split the front and rear panels by inserting a small pointed tool (such as a pen point or a screwdriver tip SL1.5) in the 5 plastic tabs along the sides of the device.

 Do not remove the back panels quickly. If too much force is applied, there is a wire connection that will break.

 **CAUTION!** Be careful not to force the tabs inward. This will result in broken tabs.

Step 7



- With tweezers (or your fingernails), carefully disconnect the wires between the PC input and the motherboard.

To reassemble your device, follow these instructions in reverse order.