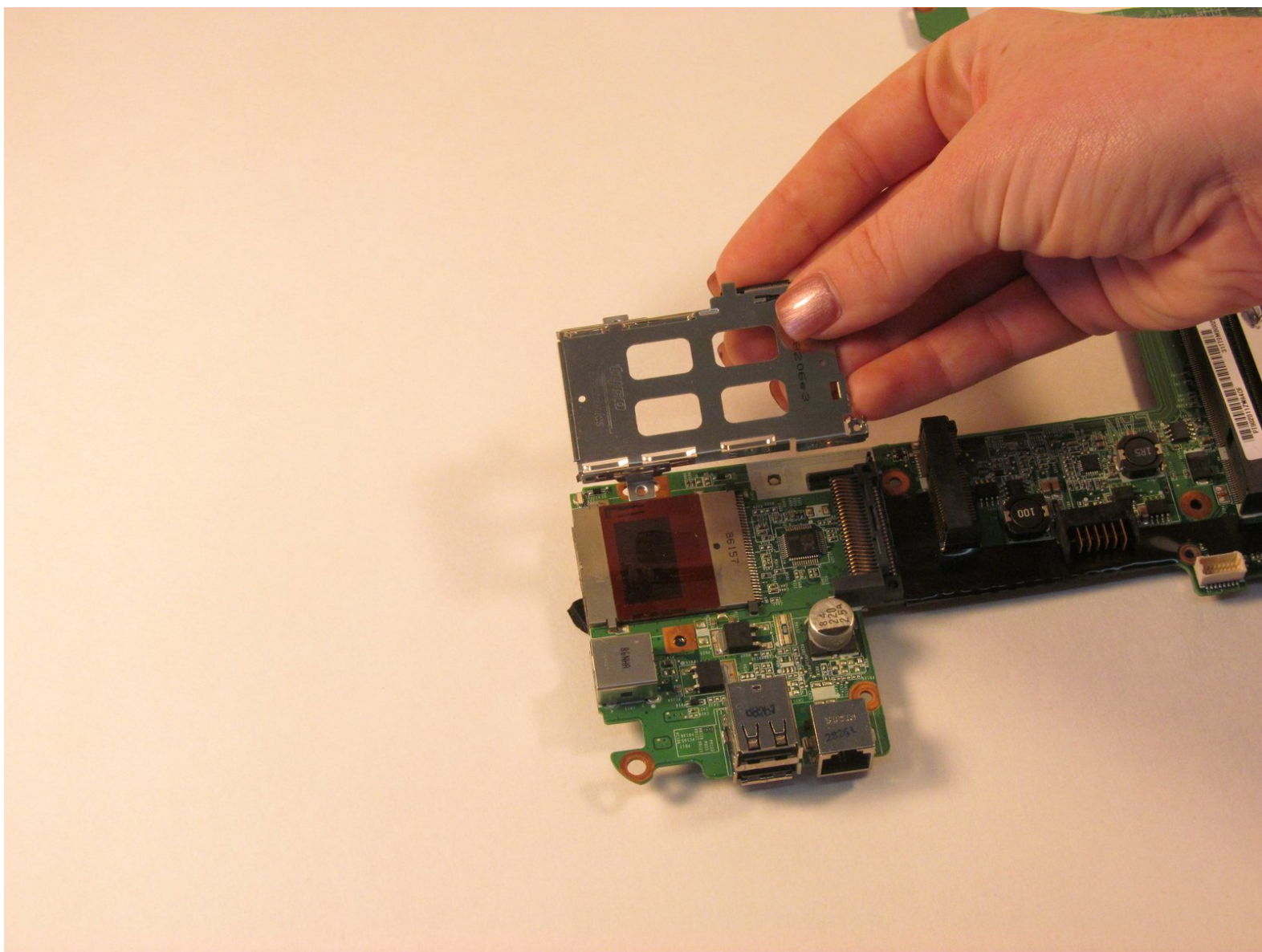




Disassembling the HP Pavilion tx2500 Bezel

Disassembly of the Broken Bezel to check for anything that may be blocking the Remote from going into its casing.

Written By: Sarah Naiser



INTRODUCTION

This guide provides steps on how to disassemble the Bezel to check if anything is blocking the casing, or to replace the Bezel if it happens to be broken.

Please follow the pre-requisite guide for the screen rotator first then follow the remaining steps to remove the Bezel.



PARTS:

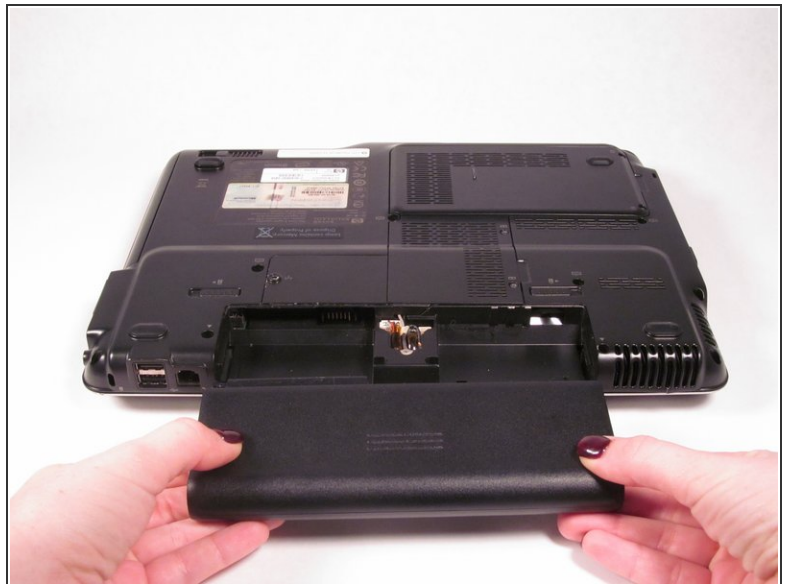
- [iFixit Opening Tools](#) (1)
 - [Phillips #0 Screwdriver](#) (1)
-

Step 1 — Screen Rotator



- Completely turn off and unplug device. Lay the device bottom side up on a soft surface.

Step 2



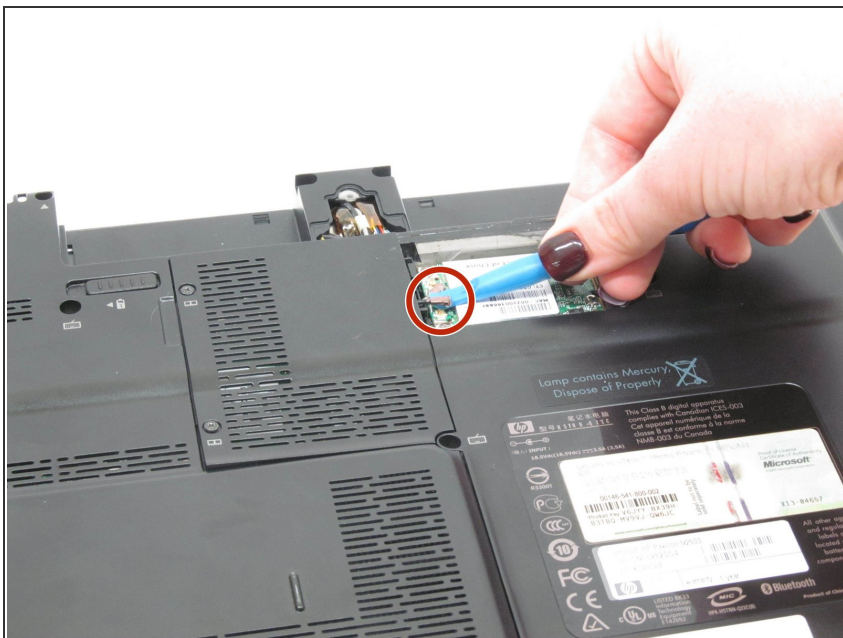
- Squeeze the latches on the battery until you hear a click. Slide out the battery.

Step 3



- Using the Phillips #0 screwdriver, remove the 4.5 mm screw from the WLAN model screen.
- Once unscrewed, lift the right side of the WLAN module compartment cover and swing it to the left.

Step 4



- Using the plastic opening tool, disconnect the WLAN antenna cables from the WLAN module.

Step 5



- Using the Phillips #0 screwdriver, unscrew the 4.5 mm screw from the middle section in the battery compartment.

Step 6



- Use the plastic opening tool to disconnect the wires in the upper corners.

Step 7



- Flip the laptop front side up and then use your fingers to lift up the keyboard.

Step 8



- Lift up the black latch that connects the film strip to the base of the computer.
- Use the plastic opening tool to disconnect the film strip from the base of the computer.

Step 9



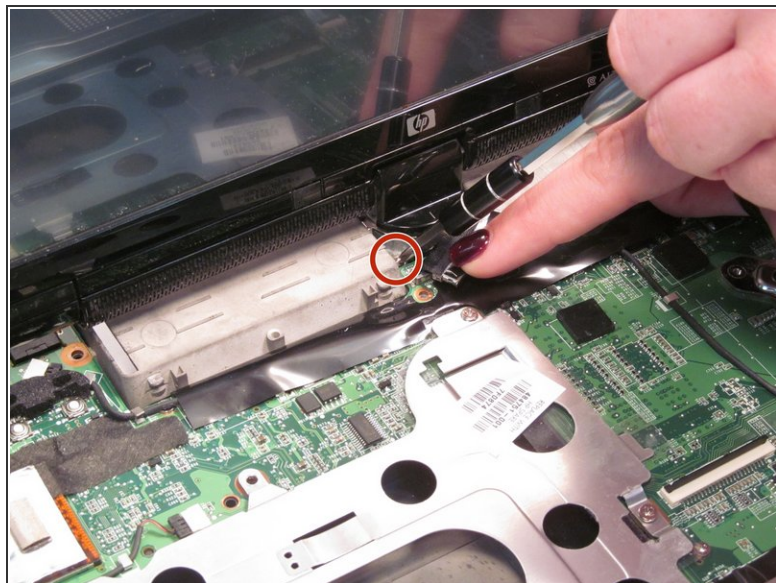
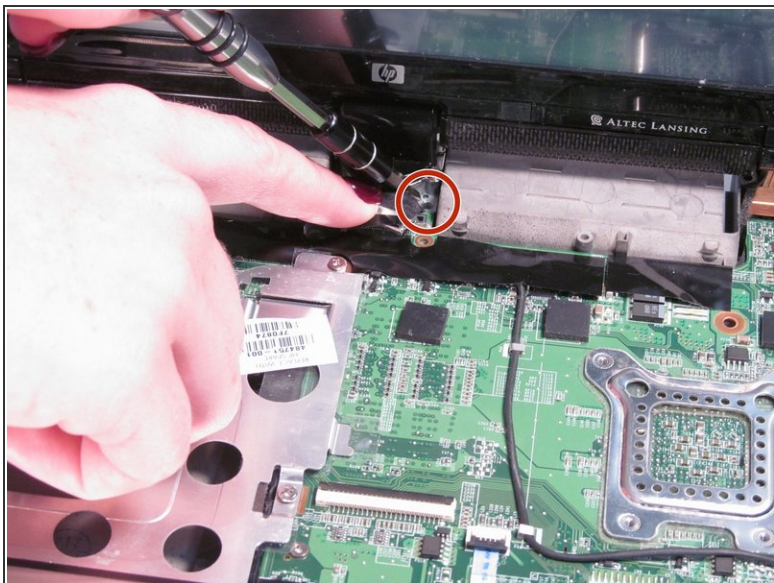
- Rotate the screen 90 degrees and remove the base under the screen.

Step 10



- Rotate the screen back towards you.
- Lift up the convertible hinge to unclip it from the base of the computer.

Step 11



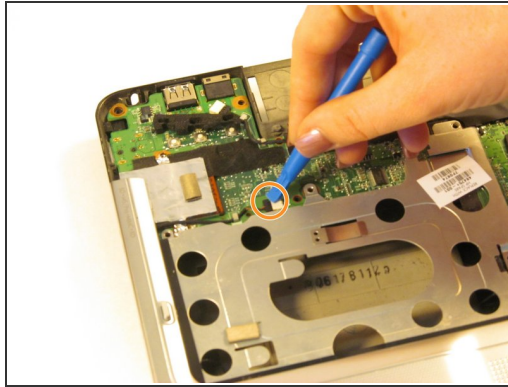
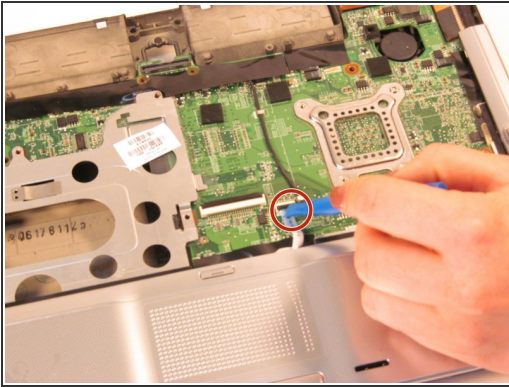
- Using the Phillips #0 screwdriver, remove both of the 5.0 mm screws on the base of the rotator.

Step 12



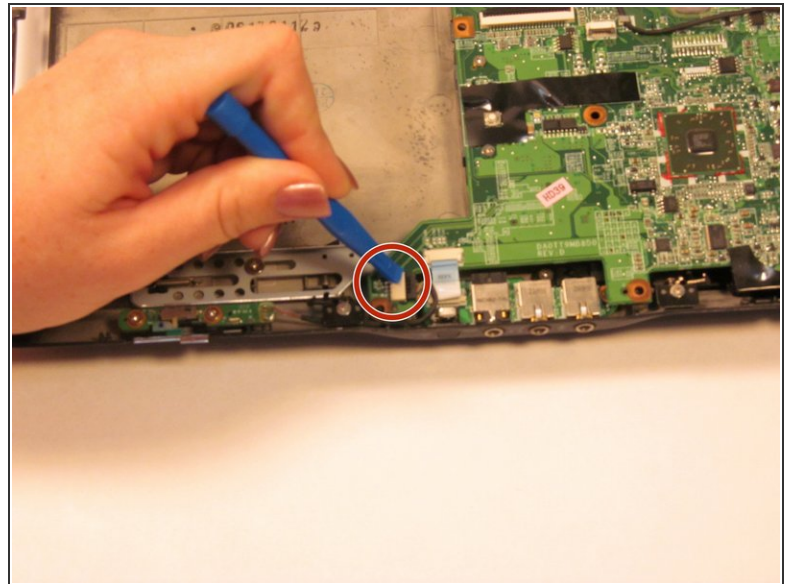
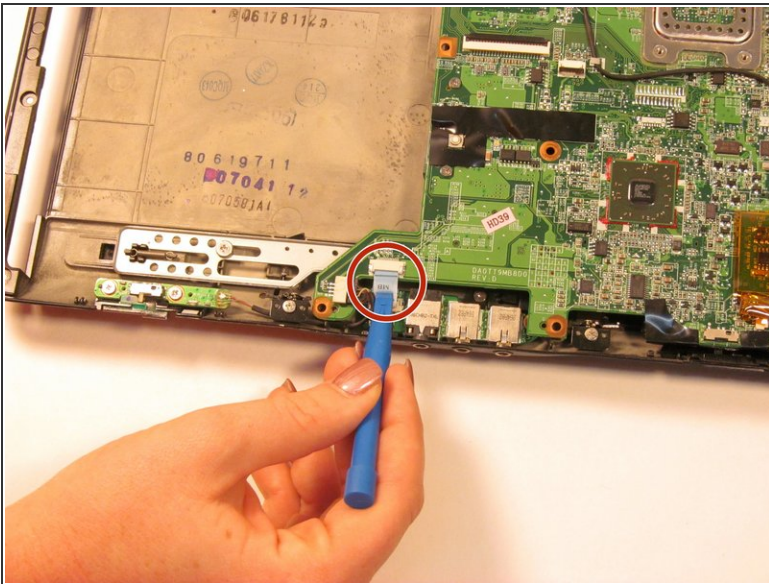
- Gently lift up and remove the screen.

Step 13 — Bezel



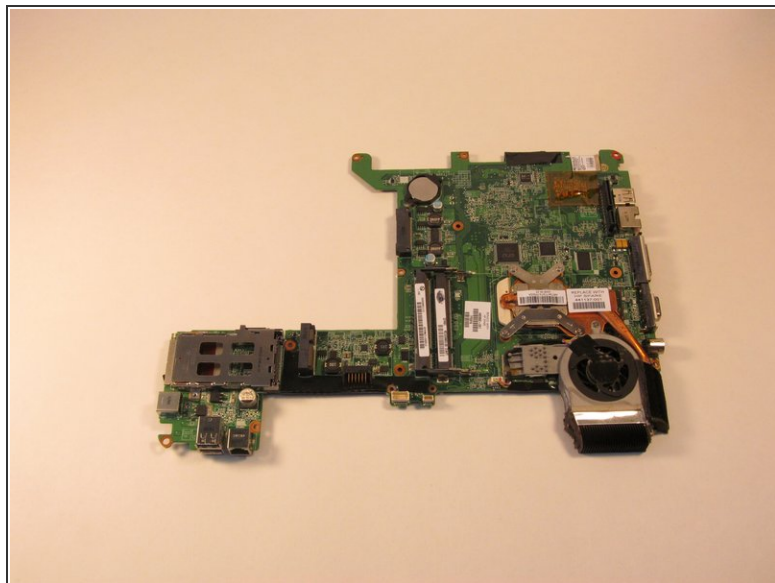
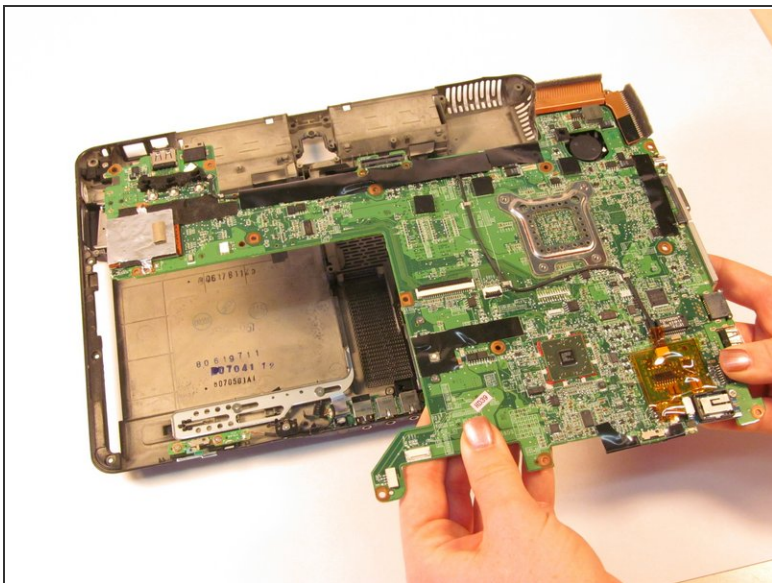
- Disconnect the wire from the system board using the plastic opening tool.
- Disconnect the wire from the optical drive using the plastic opening tool.
- Gently lift the top cover from the tablet.

Step 14



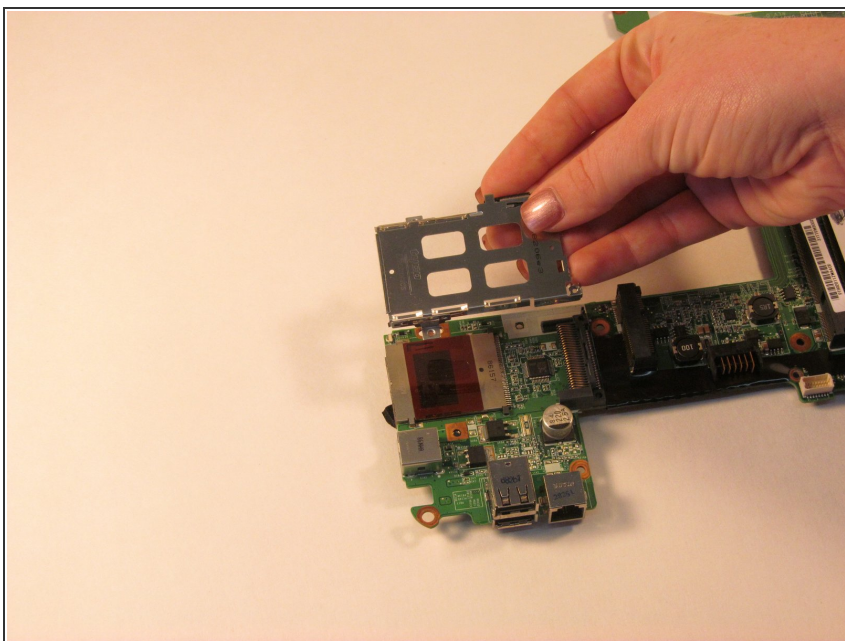
- Using the plastic opening tool, disconnect the plastic blue film from the tablet.
- Disconnect the wire using the plastic opening tool.

Step 15



- Lift the system board from the tablet.
- Turn the system board over and lay it flat on a soft surface.

Step 16



- Gently remove the bezel from the system board.

To reassemble your device, follow these instructions in reverse order.