



Disassembling the Thomas Ride On Train

The train is fairly easy to access, needing just a philips screwdriver to remove the screws. Take note that some of the screws are a different size so be aware of where those come from.

Written By: Andy from Workshopshed



INTRODUCTION

My Thomas had already been modified when I received it, the battery had been replaced and the wagon and charger were missing. The train was none functional so needed to open it up to see why.

Note

The battery may still contain charge so be careful not to short out the connectors



TOOLS:

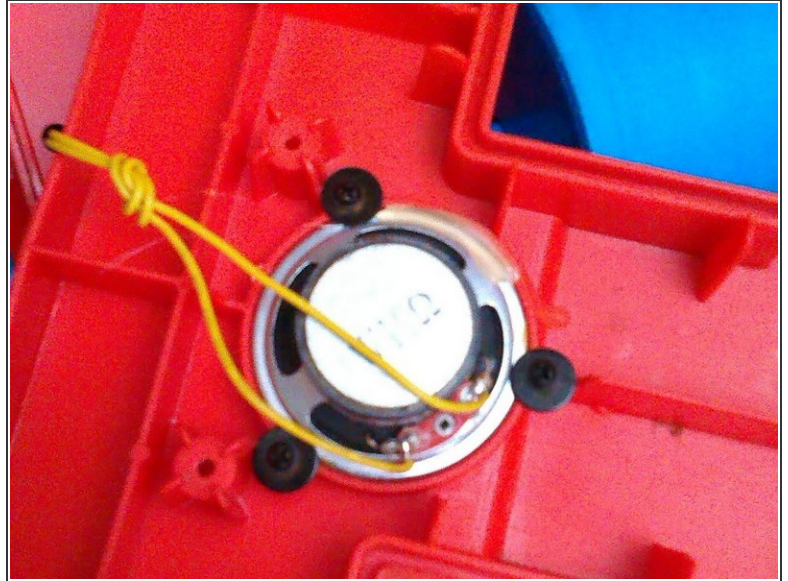
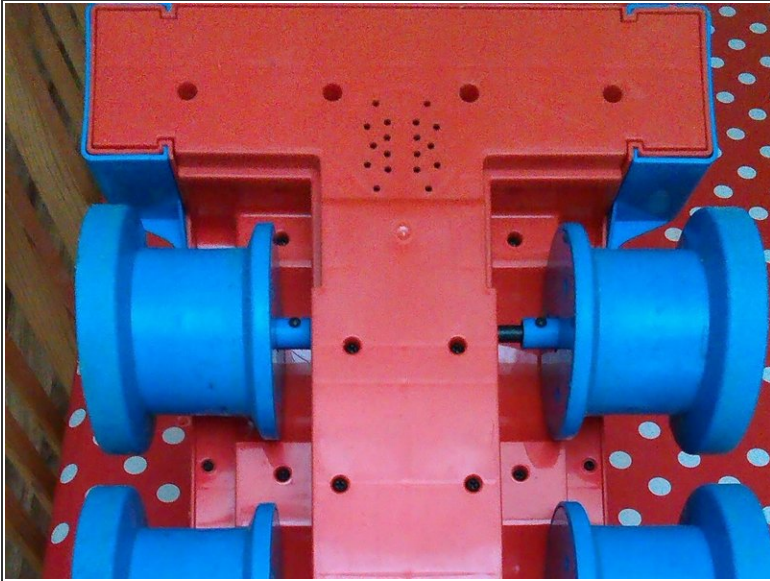
- [1.5" Thin Putty Knife](#) (1)
 - [stubby phillips #1 Screwdriver](#) (1)
 - [Phillips #1 Screwdriver](#) (1)
-

Step 1 — Preparation



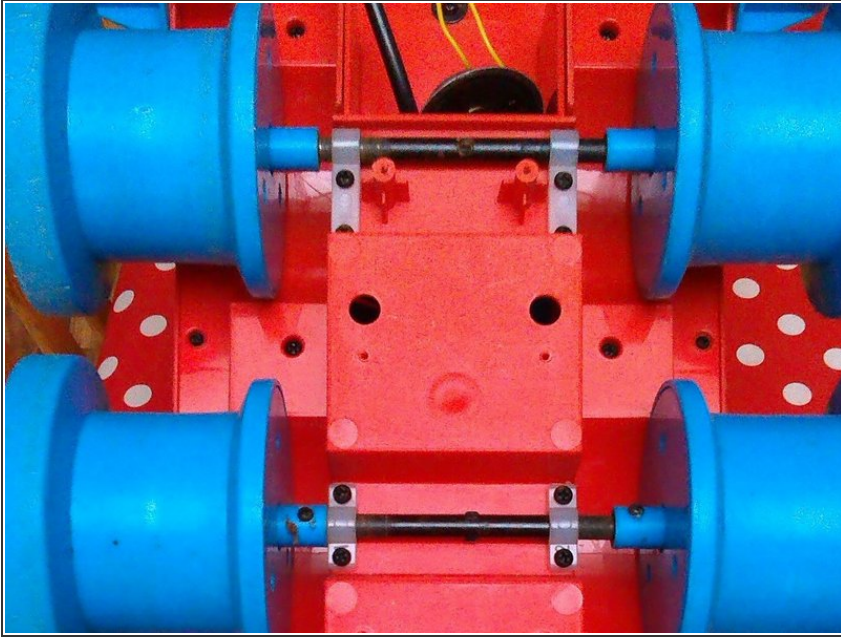
- You will need quite a lot of space to work on the engine as it effectively has to be stripped right down to get to the key components
- Before commencing, remove the battery from the system. This will make the train lighter and avoid any electrical issues. See Replacing the battery guide.

Step 2 — Removing the wheel cover



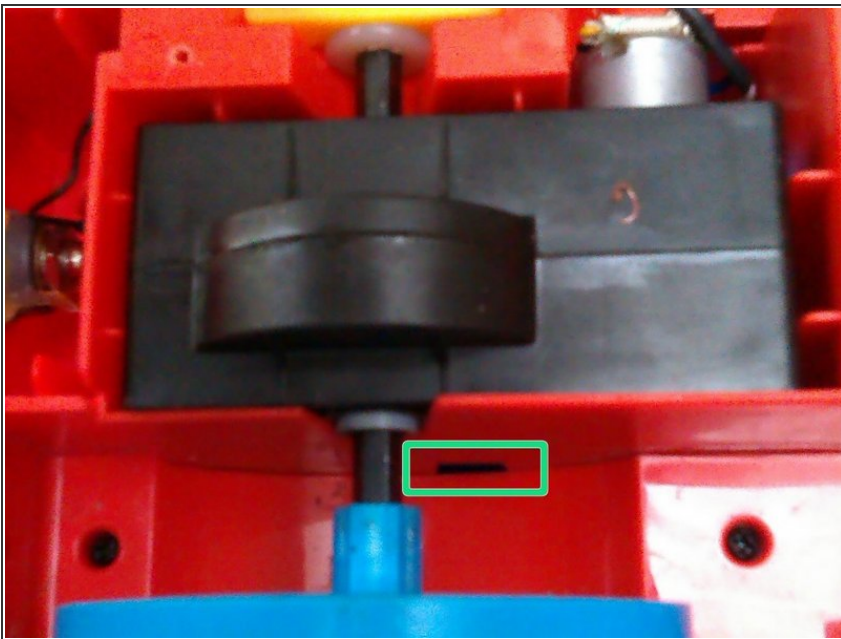
- Turn the train upside down
- Remove the screws down the centre and across the front to release the wheel cover
- ⓘ You may need to lever the cover out at the front with something like a putty knife
- Remove the loudspeaker by unscrewing the 3 screws that attach it to this cover.

Step 3 — Removing the front wheels



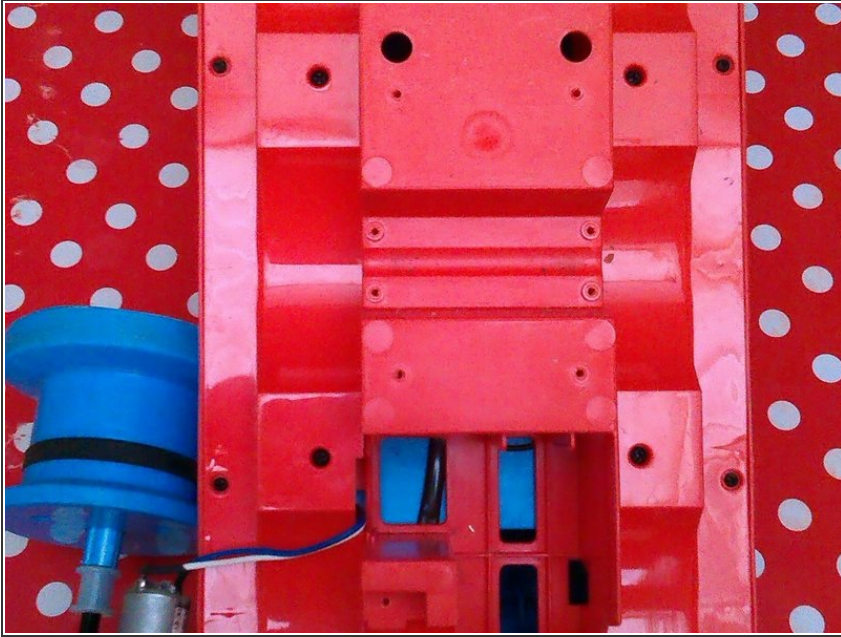
- The front two pairs of wheels are screwed on with self tapping screws. Remove the four screws that hold on each of the wheels and keep safe
- **Reassembly**
- When screwing the wheels back on note that there are counterbores in the plastic clips that fit onto the raised parts on the case

Step 4 — Removing the engine



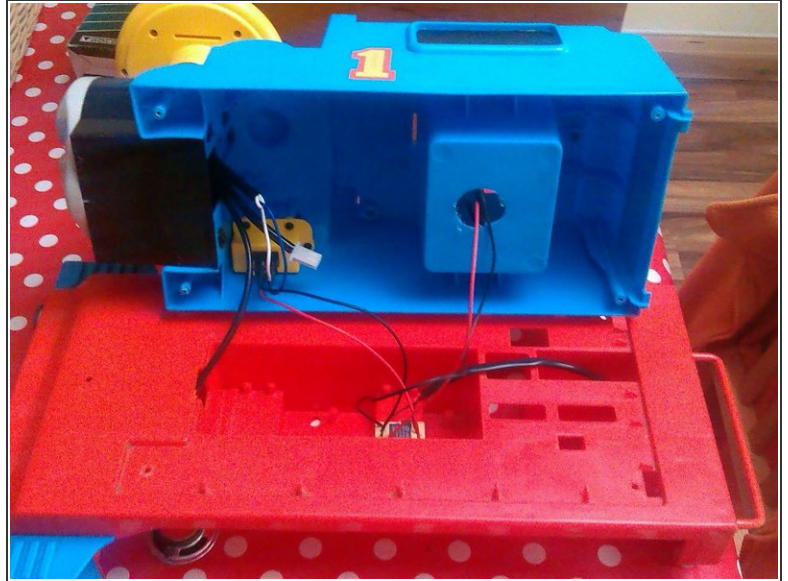
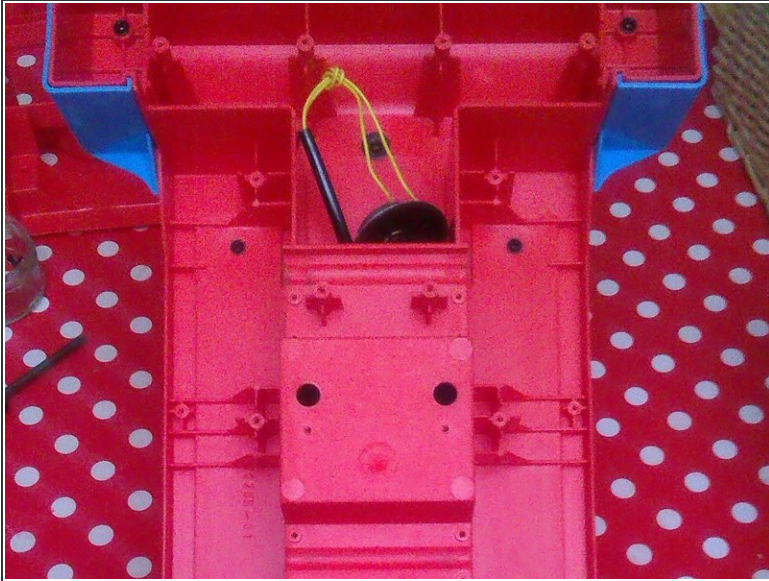
- The electric motor is held in place by two different things.
- Firstly two screws and a yellow plastic bracket.
- Also on the right is a clip that hold the motor and gearbox in place. You can release this by inserting a pallet knife or a screwdriver between the motor and case
- Note that you won't be able to completely remove the engine at this point as it is still connected by wires

Step 5 — Removing the side panels



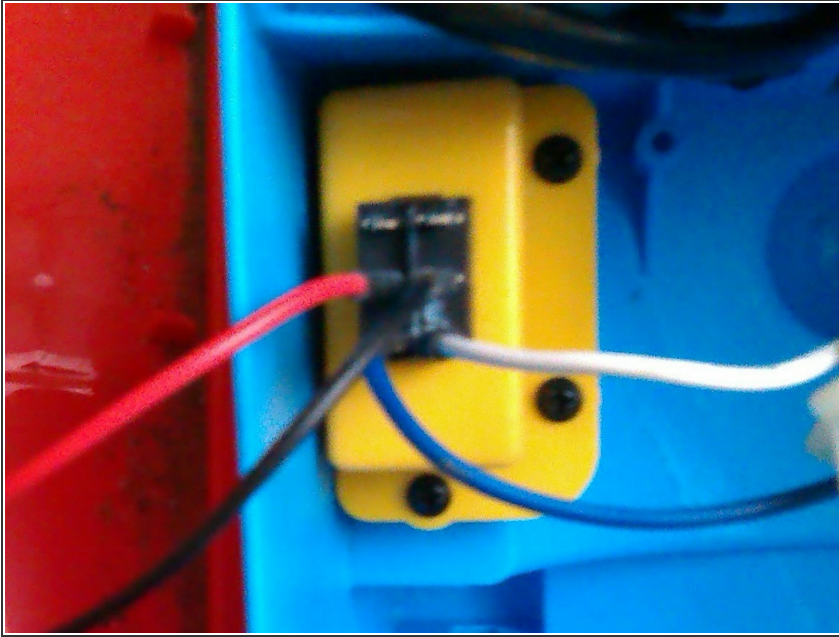
- Over the wheel arches are 2 more plastic panels, they are held in place by screws. Note that the outer screws are a smaller size.

Step 6 — Removing the body



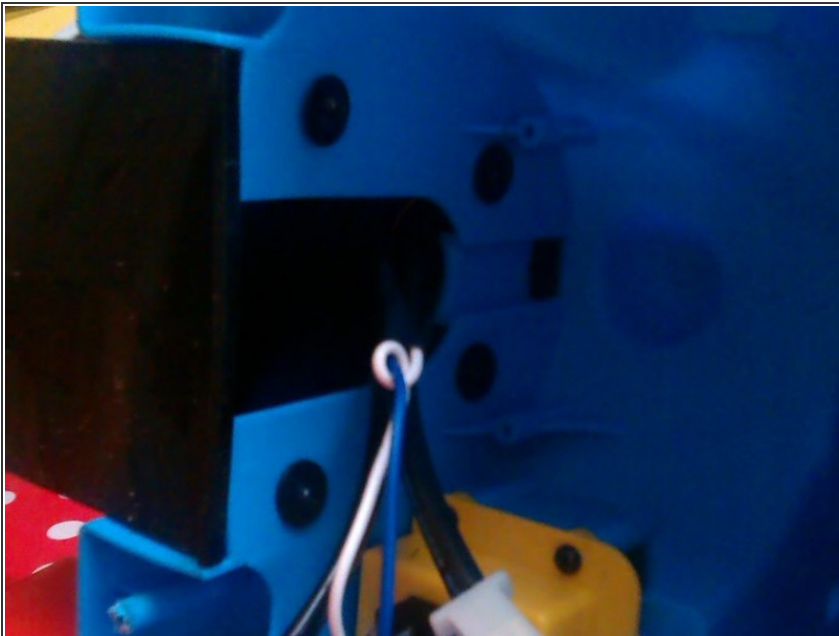
- The next 5 screws hold the body to the chassis. The top also is clipped in place at the back
- You can access most of the components at this point including disconnecting the motor and the power switch
- **Reassembly**
- Take care not to trap wires, you should be able to route the cables around the case

Step 7 — Power Switch



- The power is connected via spade connectors.
- ☑ Make a note of their position before removing.
- By removing the three screws you can access the switch which is an off the shelf double pole double throw switch but only one throw is used.
- This had broken in my train but I simply reversed it to use the other throw which did work correctly. This might be an option if you can't find a replacement part.

Step 8 — Removing the chimney



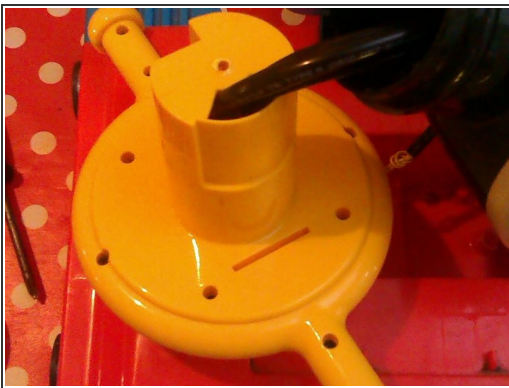
- To access the controls you need to remove the chimney, this step may require a shorter or stubby screwdriver
- Once the screws are removed the chimney slides up with respect to the body
- **Reassembly**
- Take care to ensure that all of the wires pass through the large hole and are not trapped

Step 9 — Removing the handlebars



- A single screw inside the chimney holds this in place, again you may need a short screwdriver to access this

Step 10 — Removing the console



- The console is held in place by the 4 inner screws, note you don't need to remove the outer screws or screws in the handlebars
- Note how the block attached to the lever is positioned against the switch. In my train this was 180degrees reversed and hence the lever did not do anything.
- The three buttons need to be correctly orientated, they have little bars to fit into slots
- Note the newer model may look slightly different to this

To reassemble your device, follow these instructions in reverse order.