



Disassembly / Assembly Acer Aspire 5315

In this guide you will find the disassembly and assembly of the Acer Aspire 5315 laptop explained step by step.

Written By: Hamid Nadori Hamssou



Step 1 — Tools



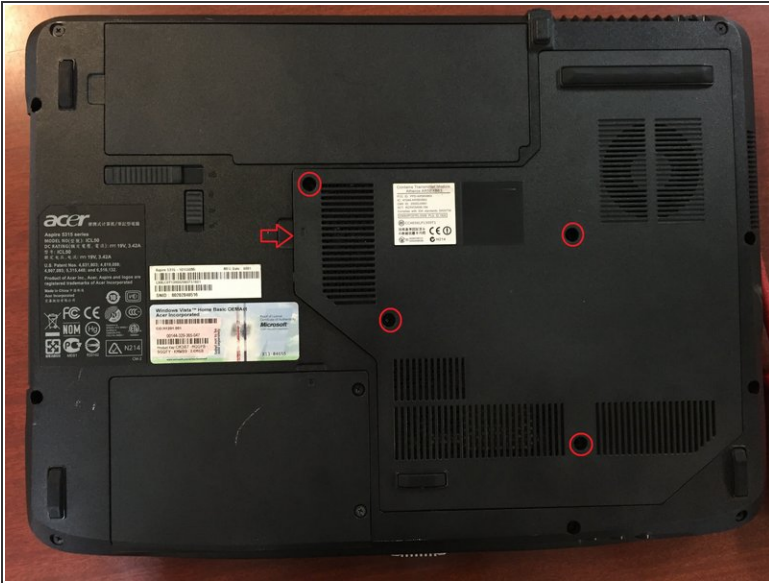
- The ideal would be a screwdriver with removable tips since the laptop has screws of different sizes.

Step 2 — Remove the battery



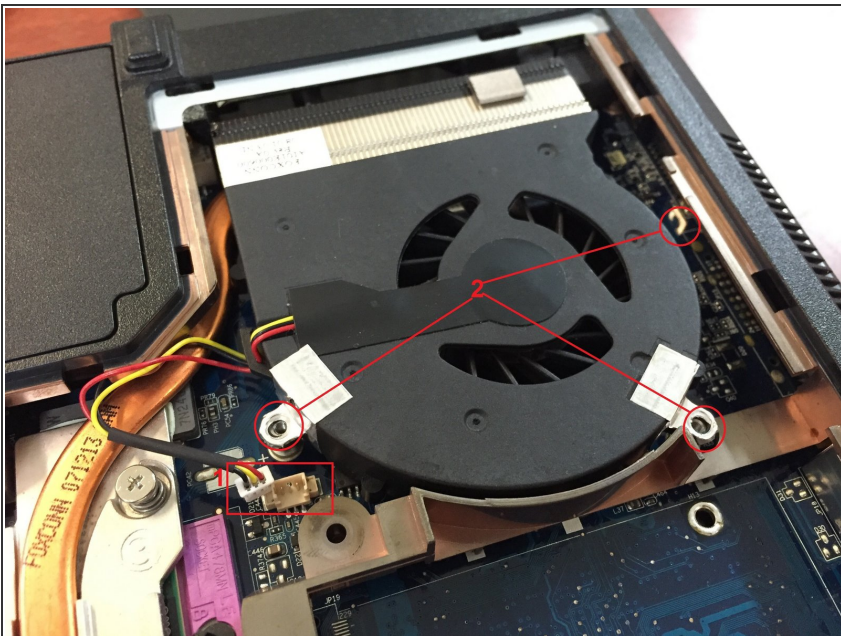
- Before starting to disassemble, we will have to remove the battery from the laptop.
- We turn the laptop and have two tabs, the first to unlock the battery and the second to remove it.

Step 3 — Remove lid



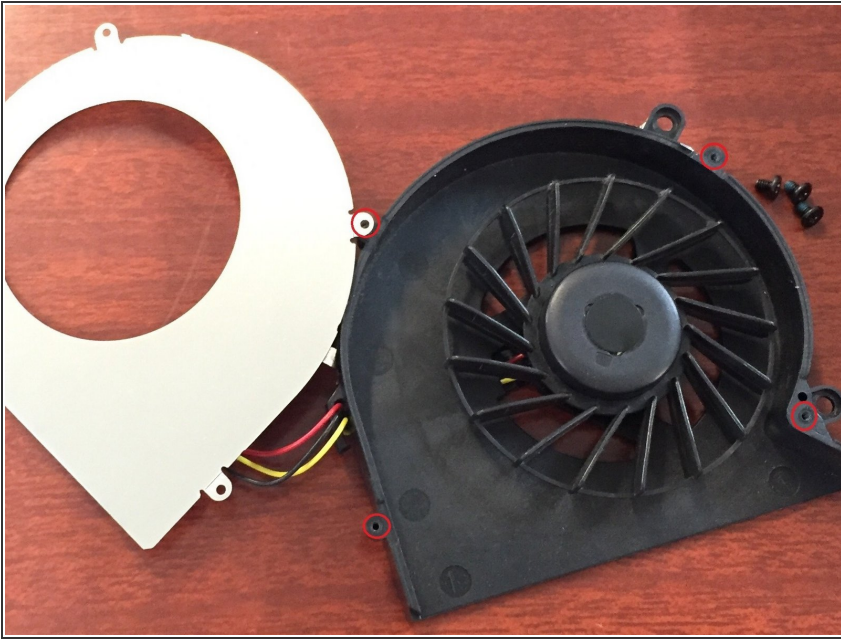
- We will have to remove the lid to be able to disassemble the other components.
- In the first place, we will unscrew the screws as shown in the first image where the screws are marked and then pull the lid and it will exit.

Step 4 — Remove the fan.



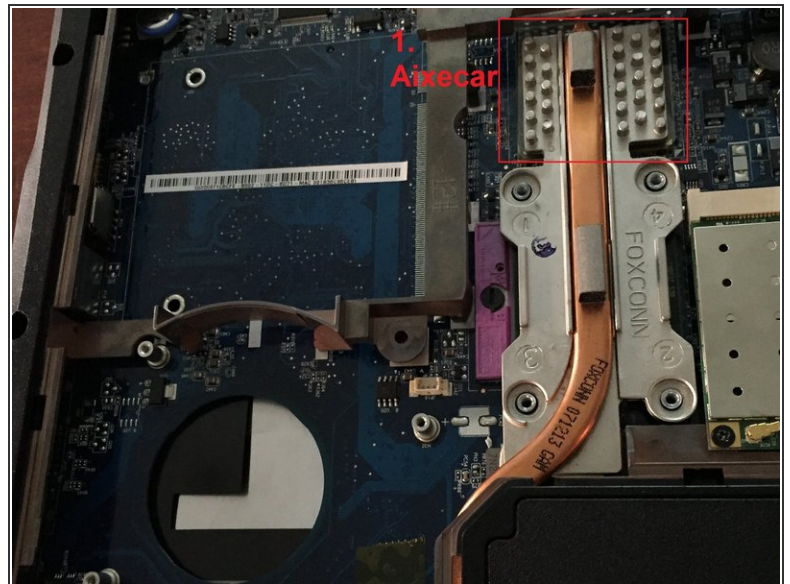
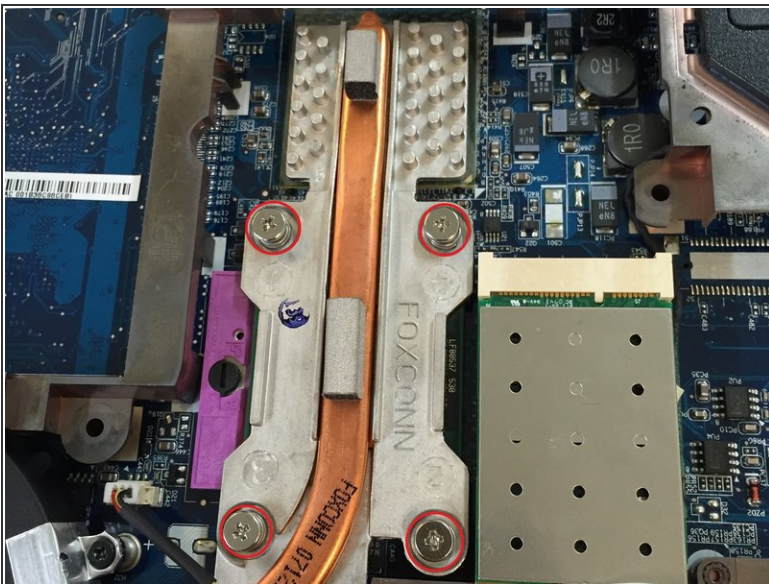
- With the lid open, we will remove the fan from the laptop.
- First of all, we will disconnect the cable from the fan to the plate.
- Then we will unscrew the screws that have screwed me in this case 3.

Step 5 — Clean the fan.



- This part is optional and recommended and it is about cleaning the fan.
- To do this previously disassembled we have to remove in this case 4 screws smaller than those of the previous step and open the lid, once made clean, for example with a toothbrush ..

Step 6 — Remove the heatsink



- After removing the fan, proceed to remove the heatsink.
- in the first place, we will unload the 4 screws that are connected to the plate
- Immediately by the top we will raise it and we will remove the dissipator very carefully.

Step 7 — Remove processor



- We reach one of the most delicate parts, remove the processor.
- It is not difficult, but you must do it carefully. With a flat-level screwdriver we will turn a lap in the direction of the needles of the clock and take it out very carefully.

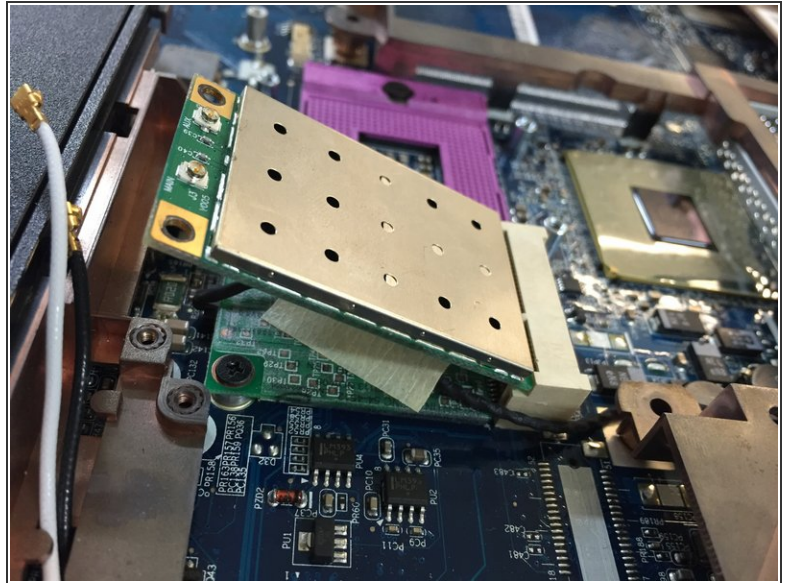
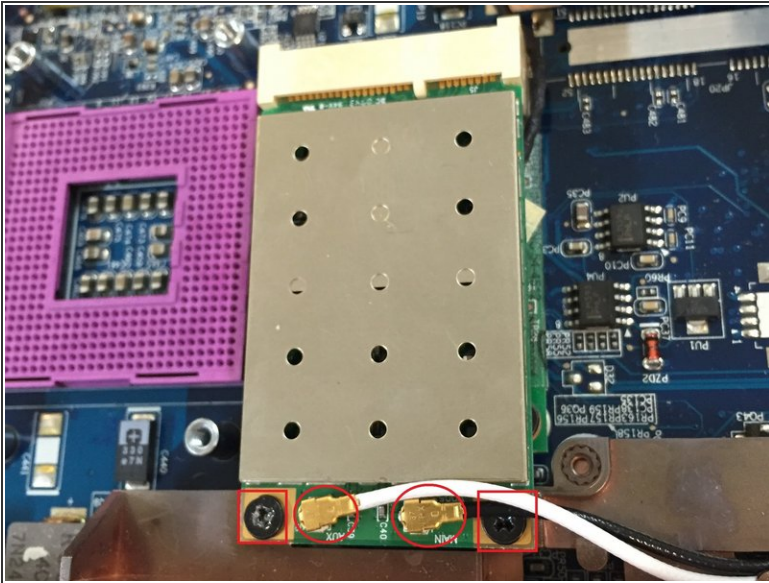
Step 8 — Remove RAM.



- Now is the turn of RAM.
- to do this we have two tabs on each side of the memory which we have to press them on the same side of each
- When doing so the RAM will automatically go out and it will stay diagonally, I just would not take it.

This document was generated on 2019-09-18 08:34:33 AM (MST).

Step 9 — Remove the Wi-Fi card



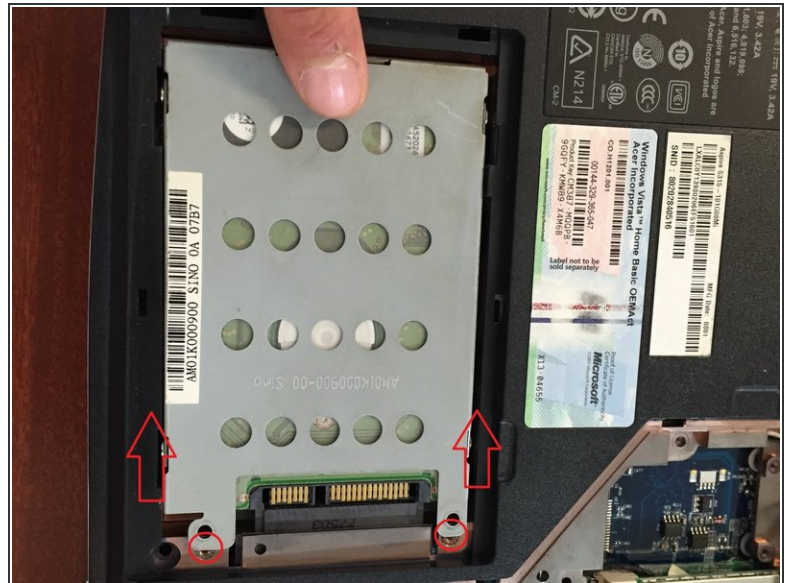
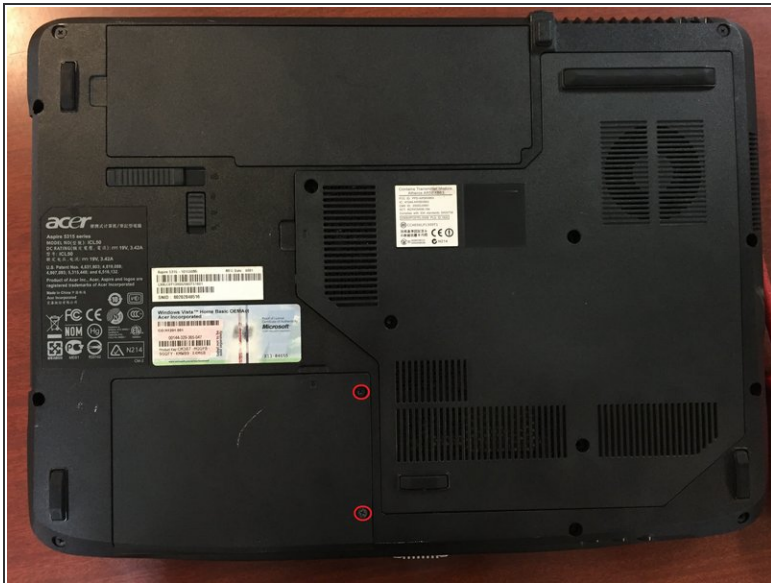
- As the title says, we will now remove the Wi-Fi card from the laptop.
- The first step is to disconnect the 2 cables that are connected to them in black and white (marked in a circle) and then unscrew the 2 screws (marked in squares).
- This way it will do the same thing that the RAM will be put diagonally and it will only fail to remove it.

Step 10 — Remove keyboard



- We will remove the keyboard.
- We will use the flat-level screwdriver and we will do the same movement as the one of the image very carefully not to break it.

Step 11 — Remove the hard drive.



- We have almost finished disassembling, but the last step is to remove the hard drive.
- To do this we have to turn the laptop and remove 2 screws.
- When you open the lid, we will find a space reserved only for the hard disk and inside, we must remove another 2 screws.
- Once shots, we move it to our left and remove it.

Step 12 — Remove the DVD player



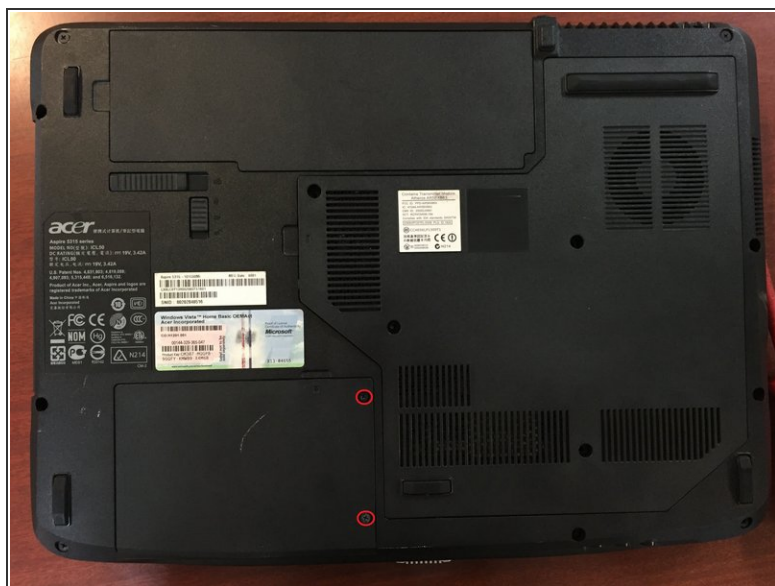
- Finally, the last step of the disassembly is to remove the DVD / CD ROM reader.
- Next to where we removed the Wi-Fi card we will find this screw which we will have to unscrew it and push it down.

Step 13 — MOUNTING: DVD player



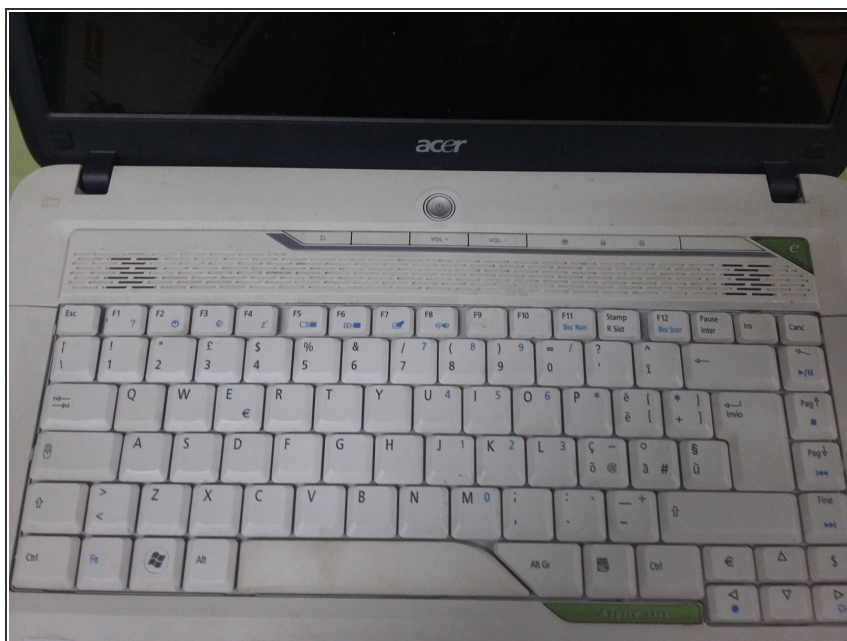
- We start with the assembly, we will assemble the DVD / CD ROM reader.
- It does not have much complication, we take the reader and place it in its corresponding place.
- Then we will have to screw a screw near the Wi-Fi card site.

Step 14 — MOUNTING: hard drive



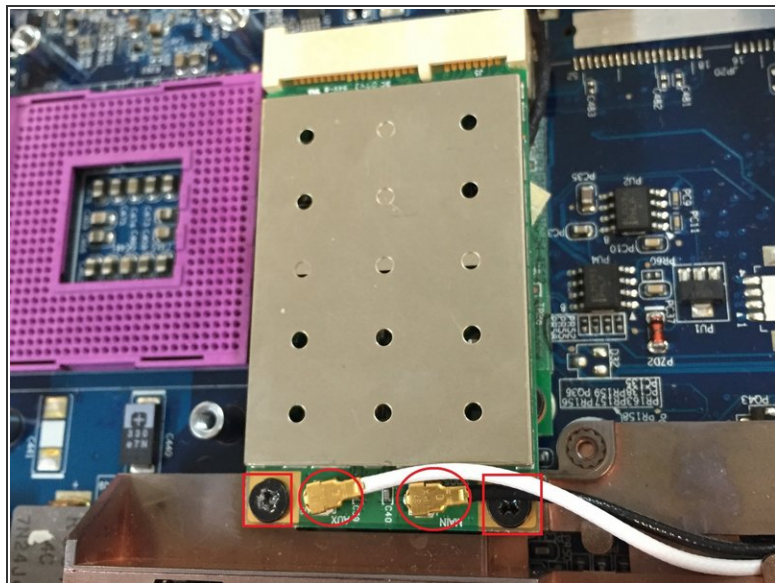
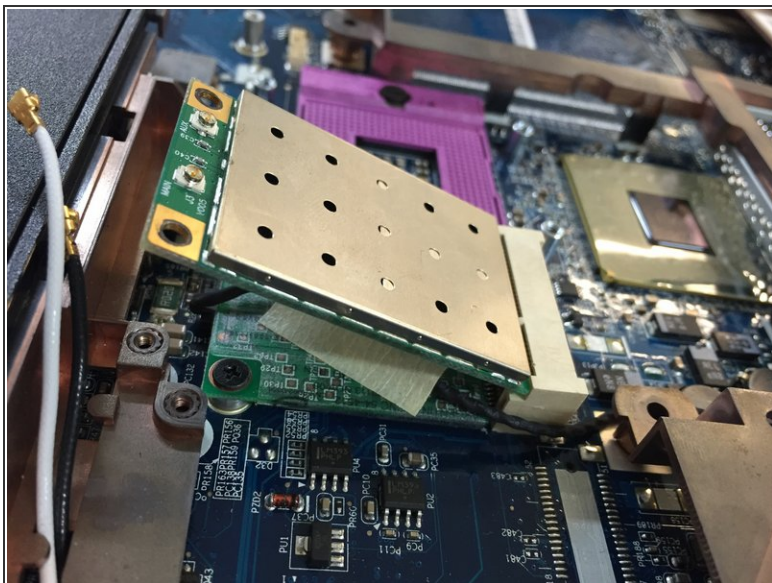
- Let's go with the hard disk ..
- We insert the hard drive in place and we push it to our right to fit it correctly. We then screw the 2 screws to the right.
- Finally, place the lid and screw the 2 remaining screws.

Step 15 — MONITORING: Keyboard.



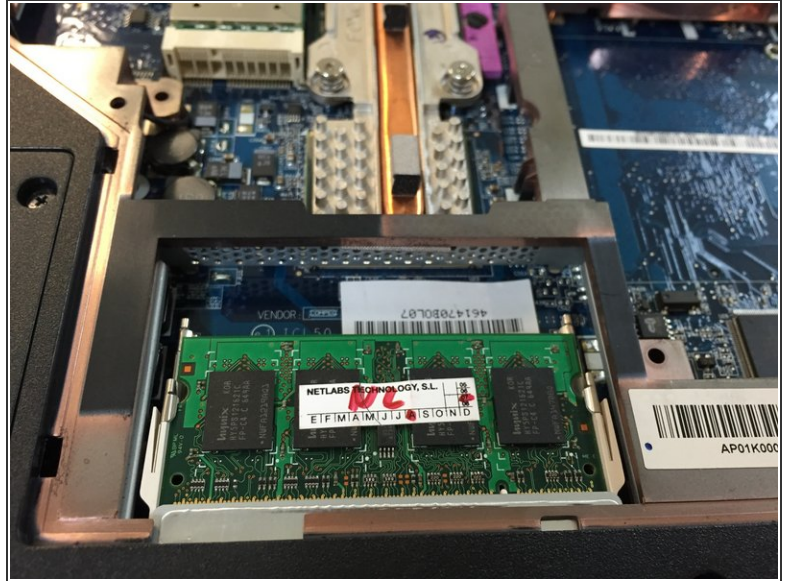
- We will mount the keyboard.
- Take the keyboard and place it in place so that the tabs are inserted correctly.

Step 16 — MONITORING: Wi-Fi card



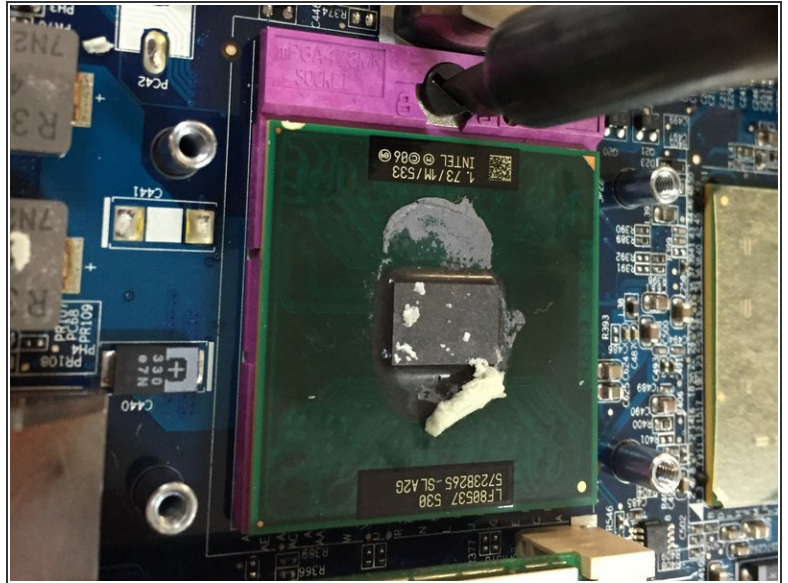
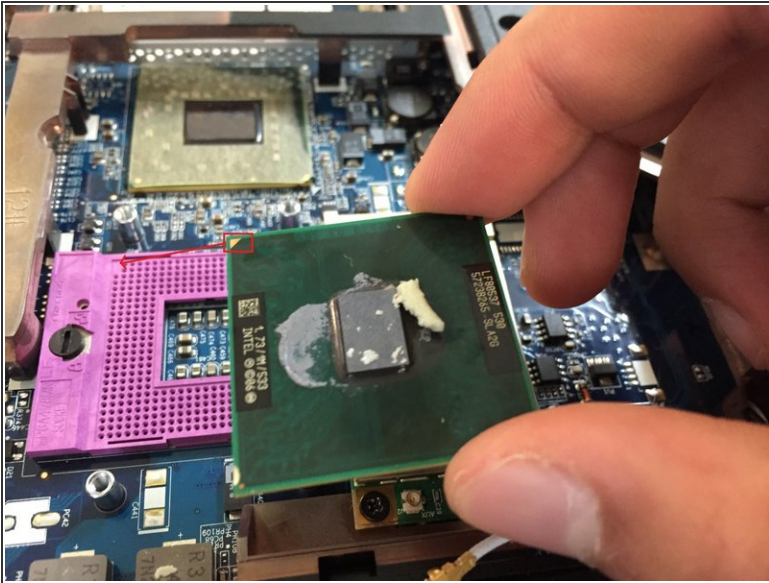
- It's the turn of mounting the Wi-Fi card.
- The first is to place it in place, screw the 2 screws it has in the back and connect the 2 cables (black and white)

Step 17 — ASSEMBLY: RAM memory.



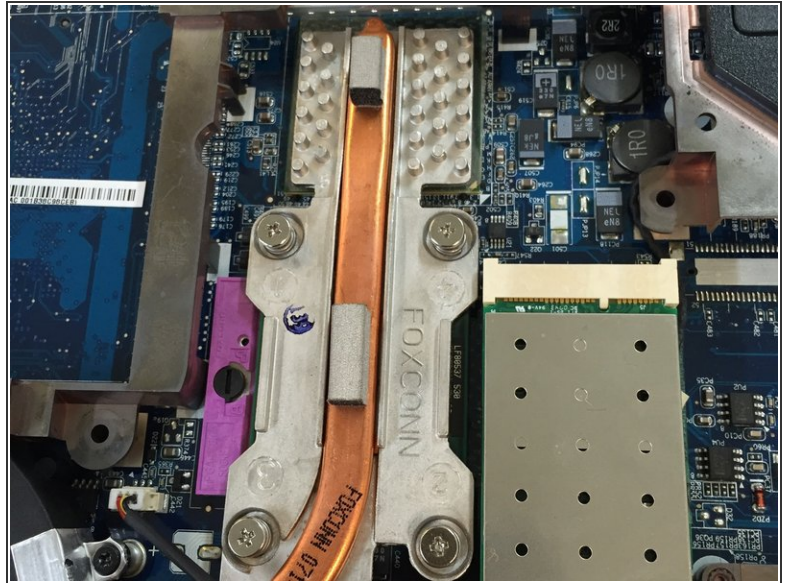
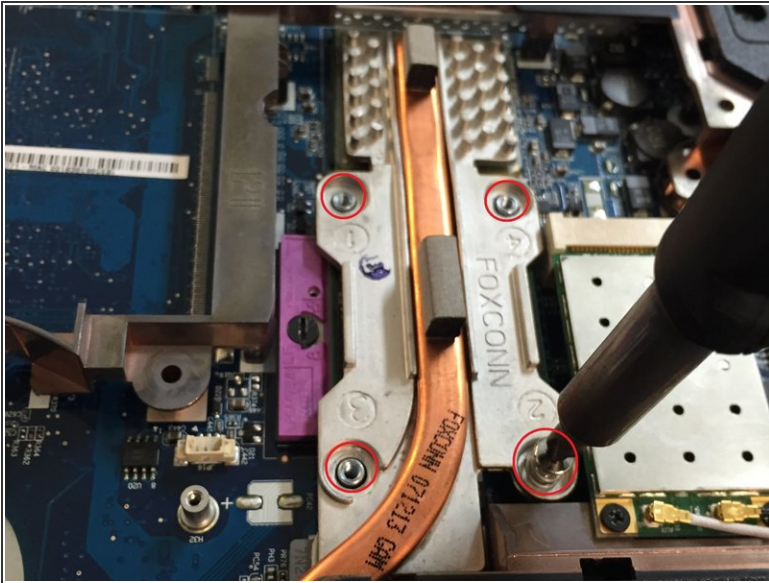
- Now it's time to mount the RAM.
- As with the Wi-Fi card we will do the same procedure, place the RAM in place and we will just have to press a little and make a "click" that means it has been installed correctly.

Step 18 — ASSEMBLY: Processor.



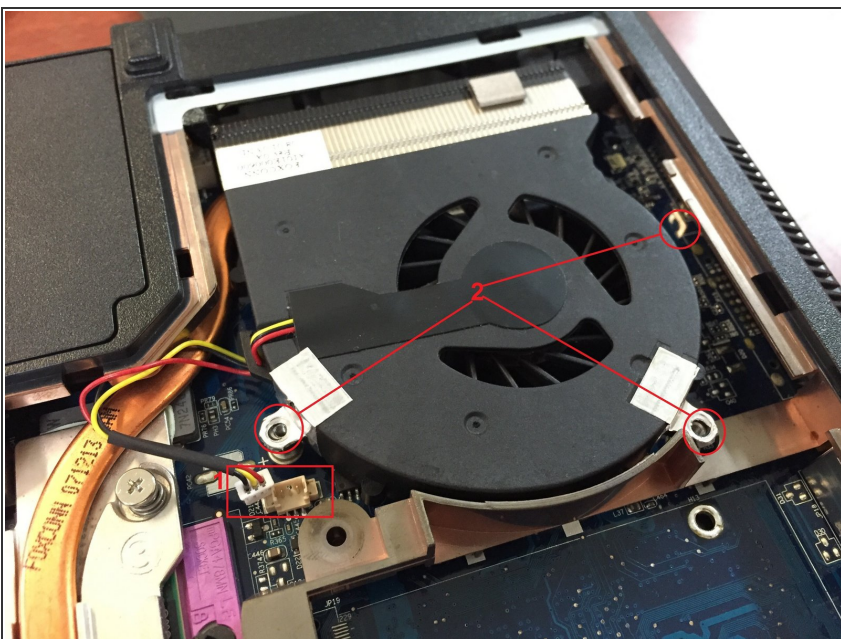
- We return with one of the most fragile and delicate components, the processor.
- Let's take the processor very carefully on the sides without damaging the pins and we look at the triangle that is there that means that it has to go to the upper right.
- Once placed with a flat-level screwdriver and turn it around in a counter-clockwise direction so that it is locked correctly.

Step 19 — ASSEMBLY: Dissipator.



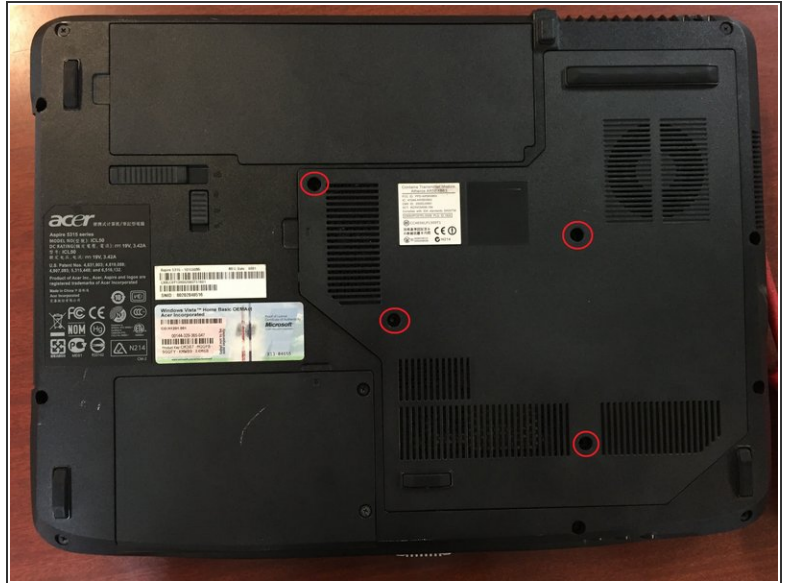
- After installing the processor is the turn of the dissipator which goes up the processor.
- We place it correctly with great care not to damage it.
- Once placed, screw the 4 screws.

Step 20 — MOUNTING: Fan.



- We have just finished, let's go with the fan.
- Put the fan in its proper place.
- Connect the fan cable to the motherboard.
- And we screwed the 3 screws.

Step 21 — MOUNTING: Lid



- Penultimate step, the protective cover.
- Place the lid.
- Ensure that all the tabs are correctly placed and without breaking them.
- Screw it.

Step 22 — MOUNTING: Battery.



- Finally, the battery to power the laptop.
- Place the battery
- With the tab that is observed in the image, push it down below so that the battery is correctly placed.

to reassemble your device, follow these instructions in reverse order.