



Disassembly Of Sony Xperia

Brief summary of how to proceed with the dismantling of the terminal.

Written By: ELIAS TRUJILLO





TOOLS:

- [New Item](#) (1)
-

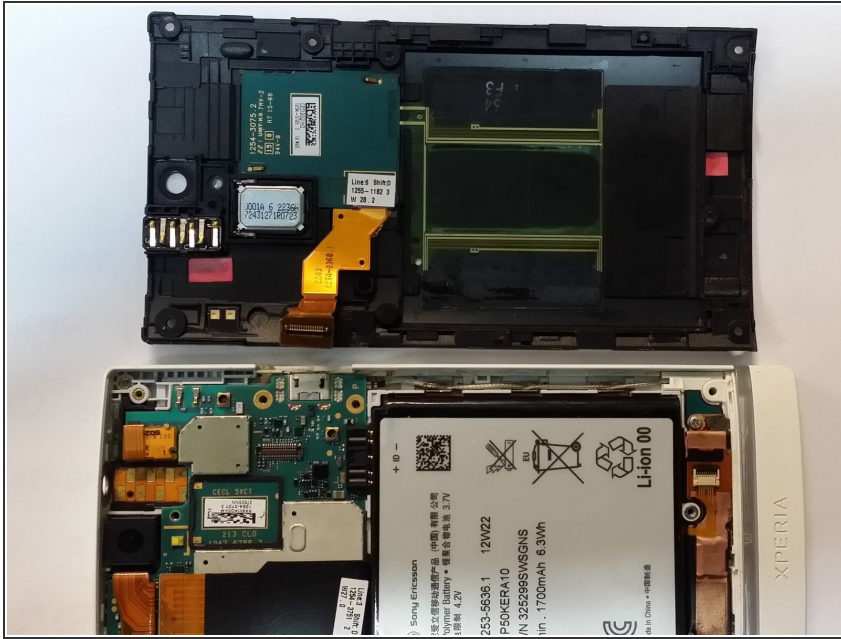
The image shows the back of a black Sony Ericsson LT26i smartphone. A white label in the center contains the following text: "Made in China", a crossed-out recycling symbol, "CE 0682", a barcode, "FCC ID: P77A980120 IC: 4170B-A980120", "SN: 83904054M", "3517295-034177-5", "Sony Ericsson", "LT26i", "Type: MD-3800120-AV", "ACM C85", and "TZM28". Eight screws are highlighted with red circles: four are in the corners (top-left, top-right, bottom-left, bottom-right) and are enclosed in blue squares; the other four are along the sides (top-left, top-right, bottom-left, bottom-right) and are not enclosed in squares.

- The step to follow is to remove the first white cover or cover that protects the system of beating but not of water. Once we remove the white cap, we find a cover supported by a total of 10 screws, 4 Phillips star head PH000 and another 6 hexagonal head T5. Here is how it would look like:

The image shows the internal components of a Sony Ericsson SP50K smartphone. The battery is a Li-ion 1000mAh, 3.7V, with a capacity of 12W22. The camera module is visible, and a red arrow points to it. The phone is disassembled, showing the internal circuitry and components.

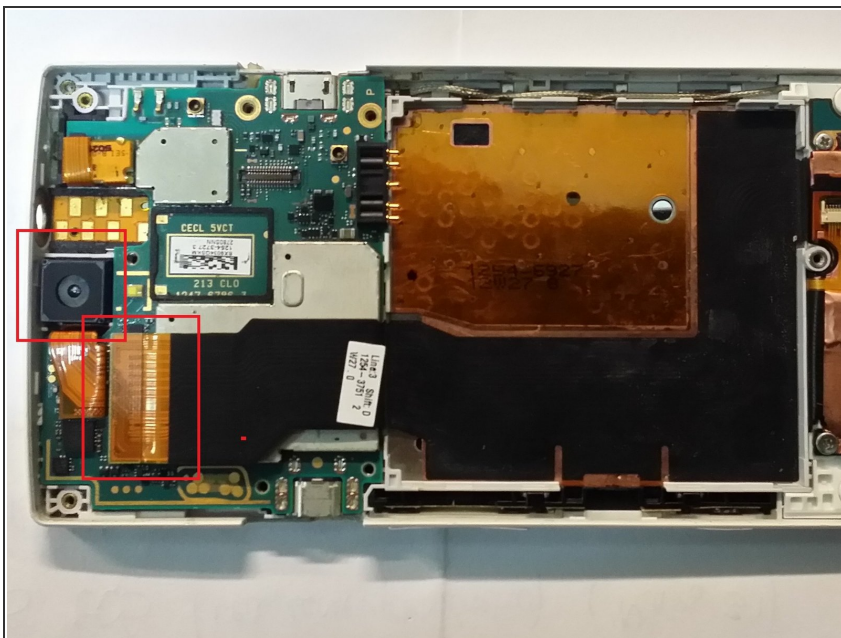
- The next step now is, once the screws are removed, lift with the help of a pick or any object that prevents the deterioration of the terminal to lift the black cover. The problem with this is that it is connected to the inner part of the terminal by means of a bus (indicated in the photo).

Step 3



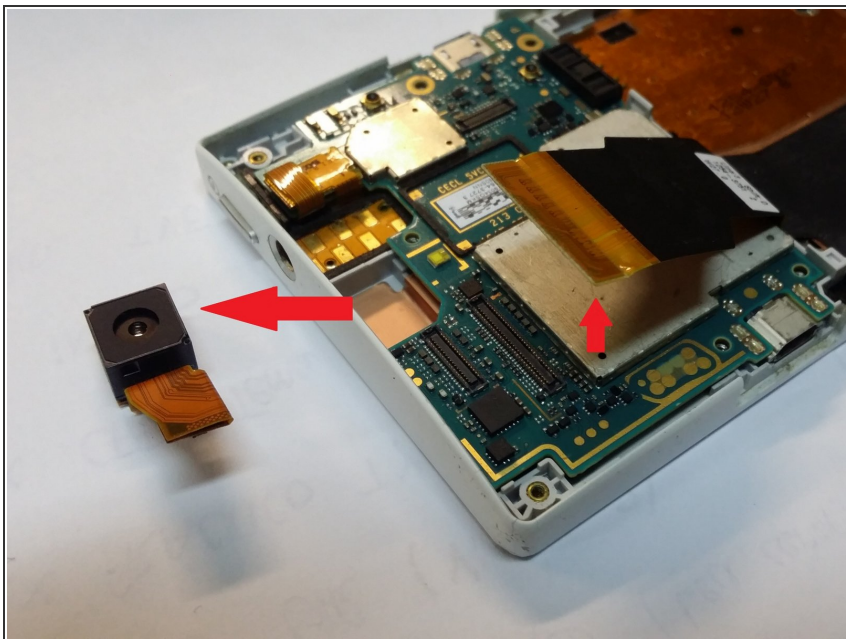
- Remove the bus and remove the black cover getting air to the base plate terminal.

Step 4



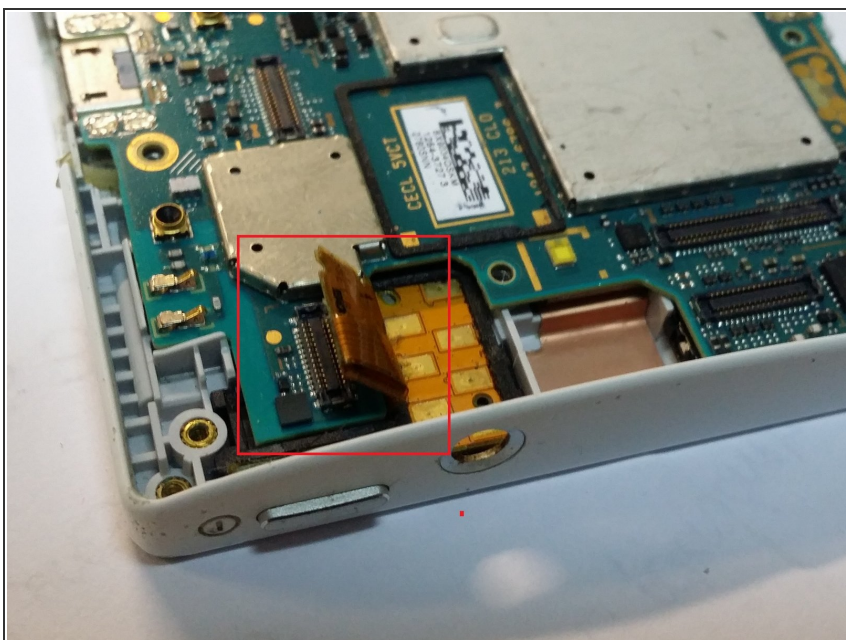
- It's time to remove the battery from it. Once done we will focus on extracting the bus that connect the terminal with the motherboard (Image below). We would apply the same procedure as the previous bus, some pressure and leave by itself.

Step 5



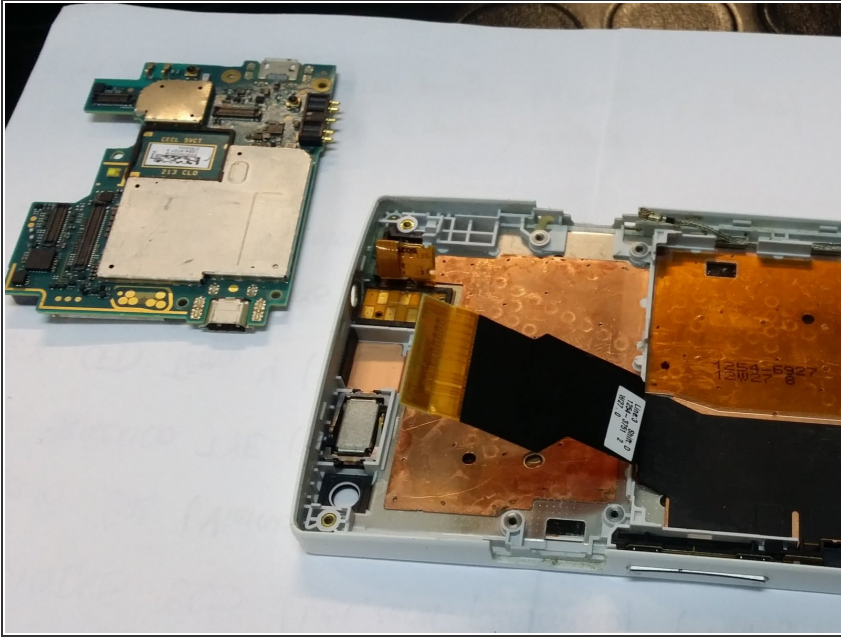
- once unhooked the buses will be able to remove the camera:

Step 6



- To finish, we will remove the bus closest to the camera. It is located just below the on / off button. (Next image):

Step 7



- Once this has been achieved and no problem of any reason has occurred, we will have the facility to remove the base plate, leaving the terminal completely disassembled, thus remaining

To reassemble your device follow these instructions in reverse order