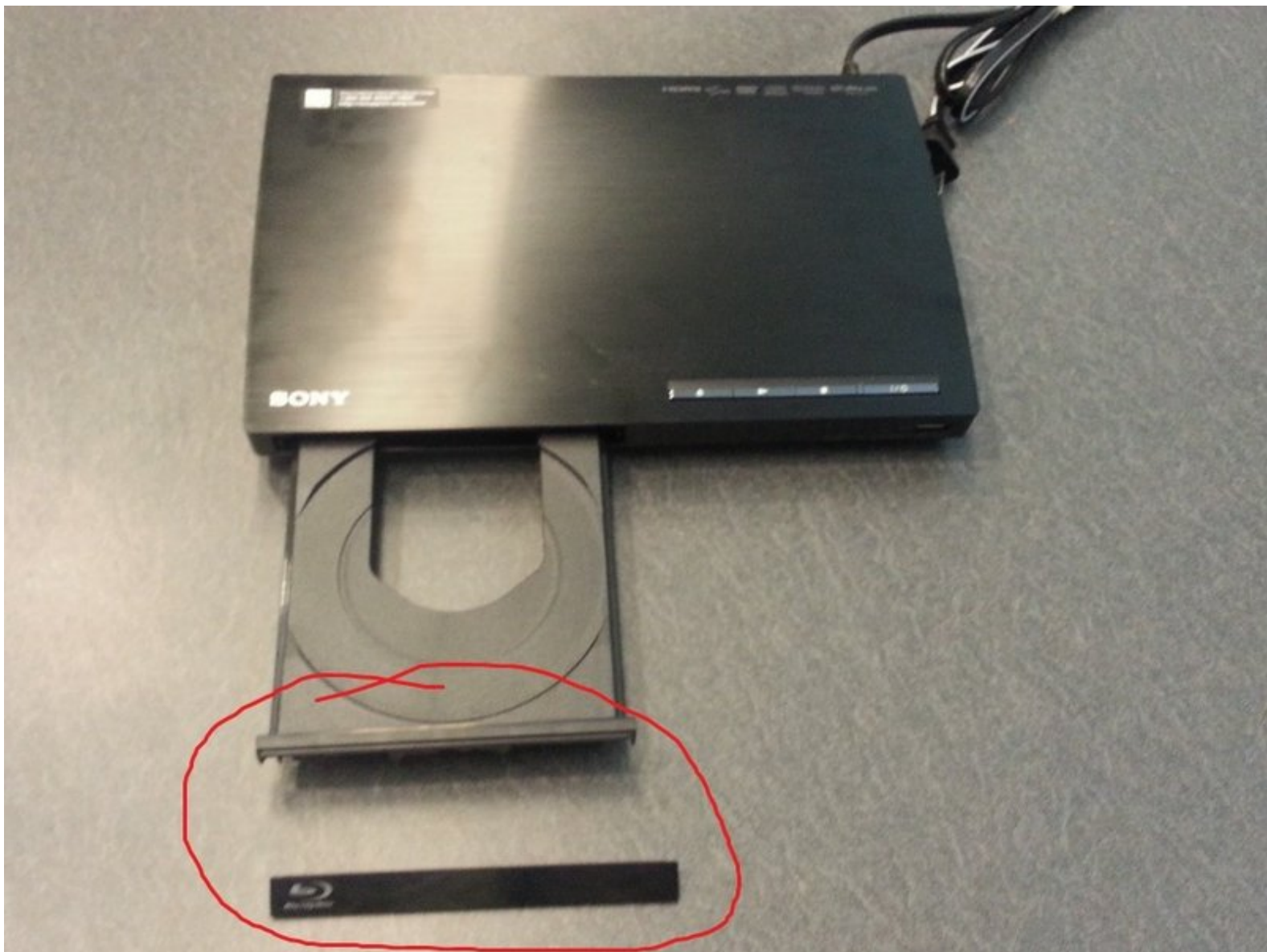




Disassembly of Sony BDP-BX18 Blu-ray player

This dis-assembly manual will take you step-by-step through the deconstruction process of a BDP-BX18 model Blu-ray player.

Written By: TEAM 7



INTRODUCTION

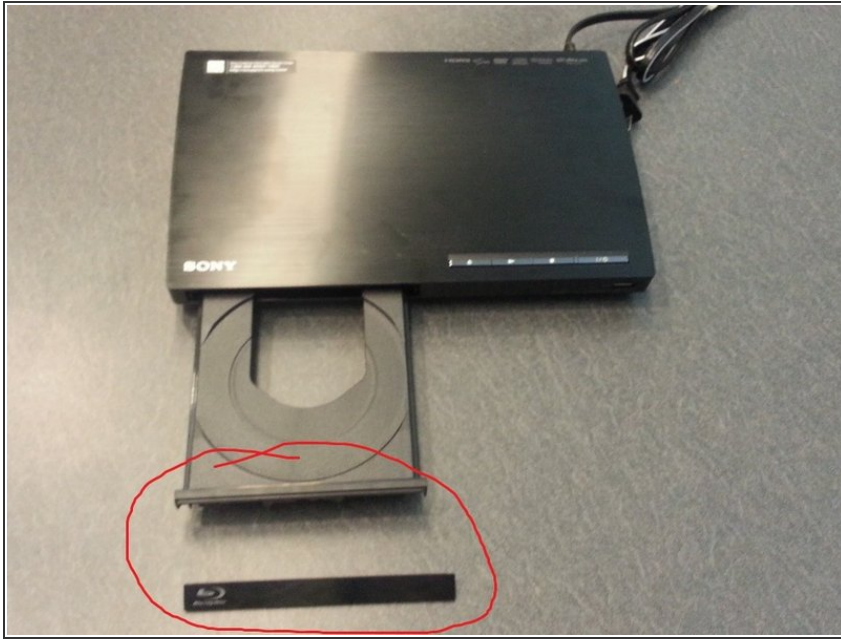
You should have a basic understanding of tool usage (ie. screwdrivers)



TOOLS:

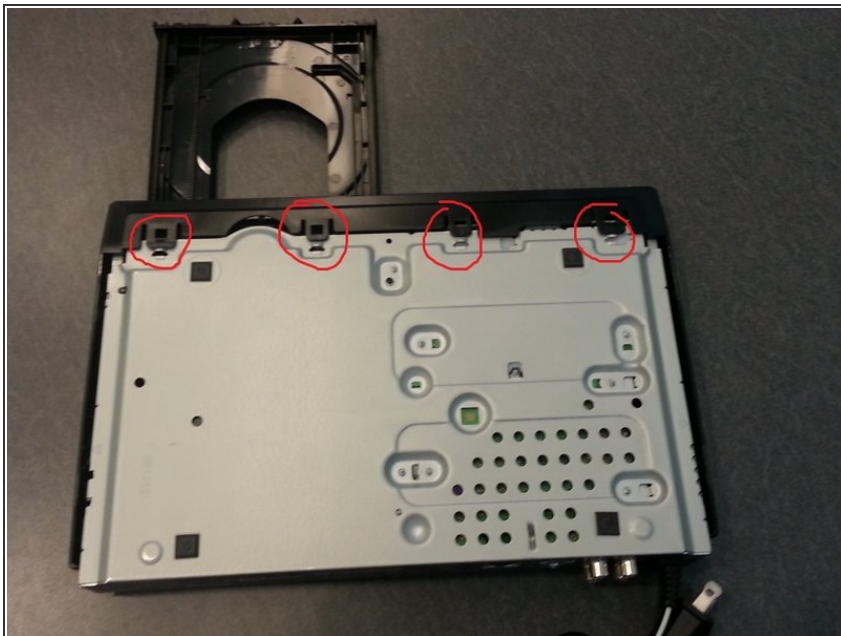
- [Phillips #2 Screwdriver](#) (1)
 - [Flathead 3/32" or 2.5 mm Screwdriver](#) (1)
-

Step 1 — Blu-ray player



- Remove the face plate by depressing the small plastic tab
- ***NOTE:** eject disk tray first before dis-assembly to gain access.

Step 2



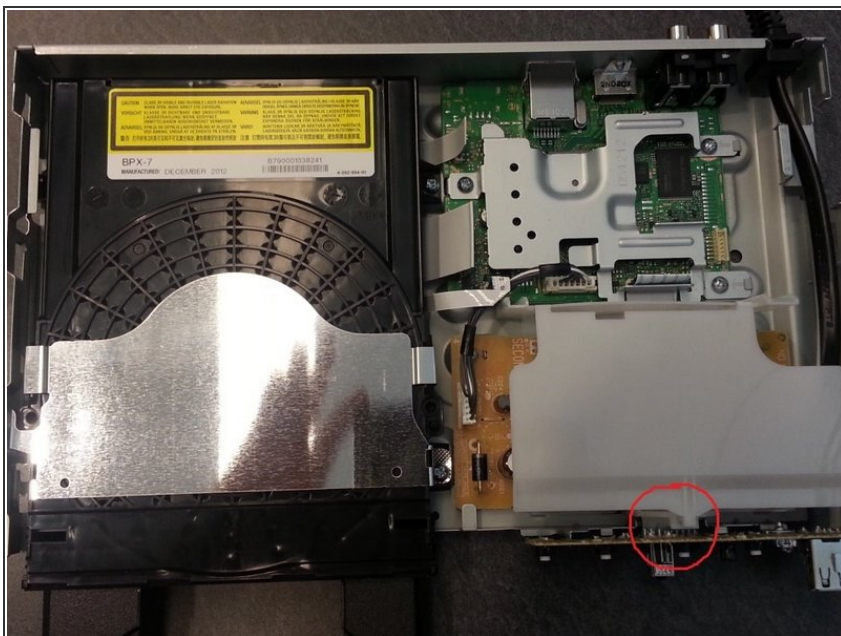
- Release front 4 tabs in order to slide main cover forward.
- ***NOTE:** slide only a few mils forwards before next step.

Step 3



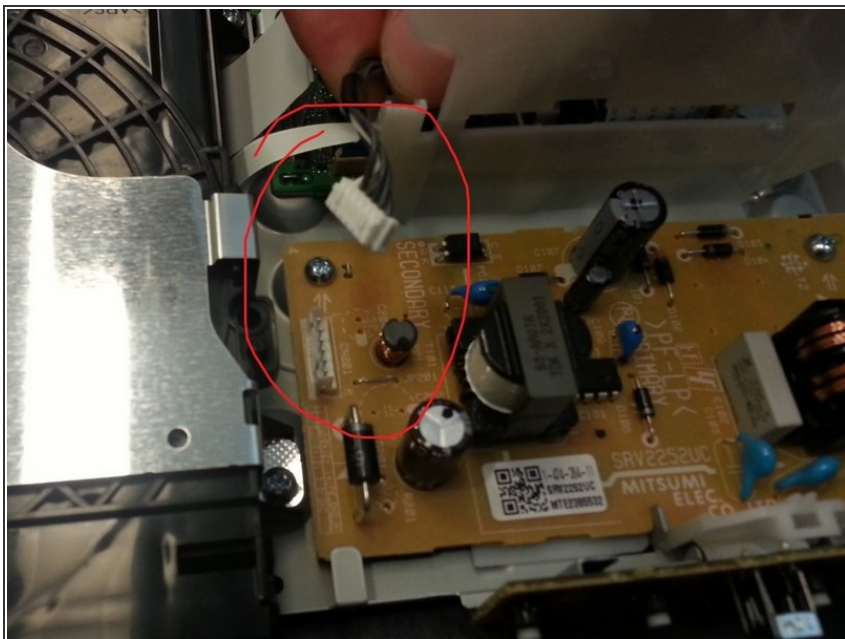
- Release tabs on both left and right sides of unit while maintaining forward pressure to slide cover off.
- ***NOTE:** The arrows depict where the tabs are located.

Step 4



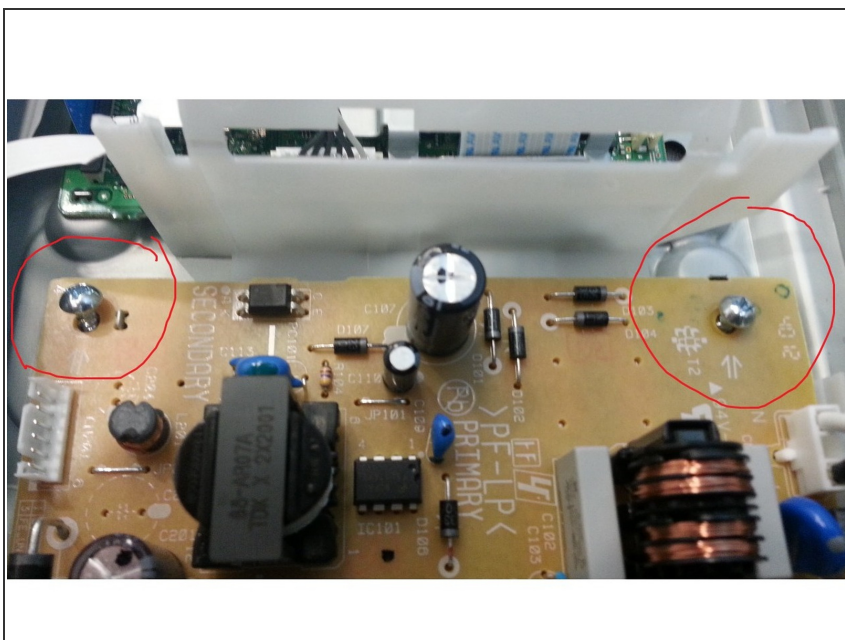
- After cover removal, you should now have access to the internal components.
- We will begin removing the power supply. Compress the center clip and open plastic shield.

Step 5



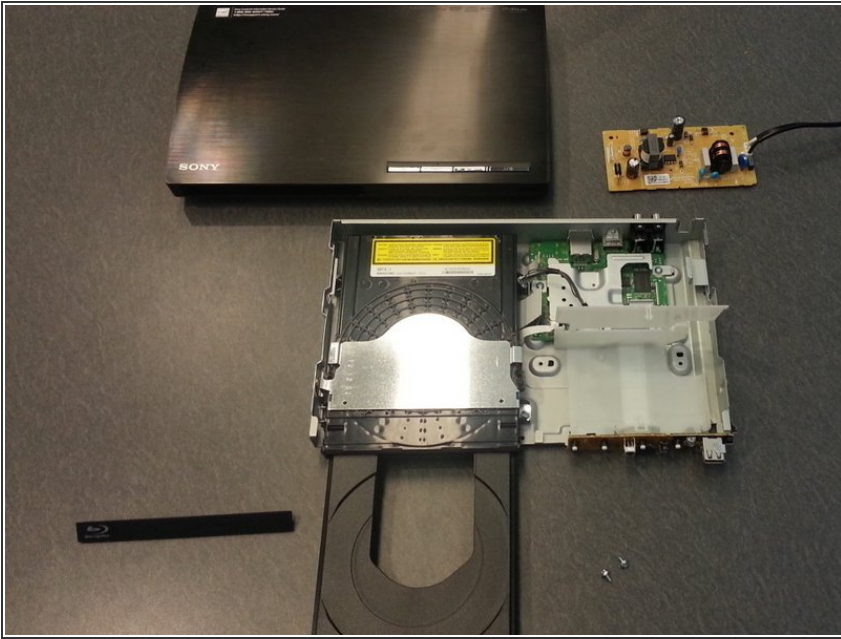
- Release clip to remove 6 pin power cable.

Step 6



- Unscrew two mounting screw for power supply. Slide forward and pull out for removal.

Step 7



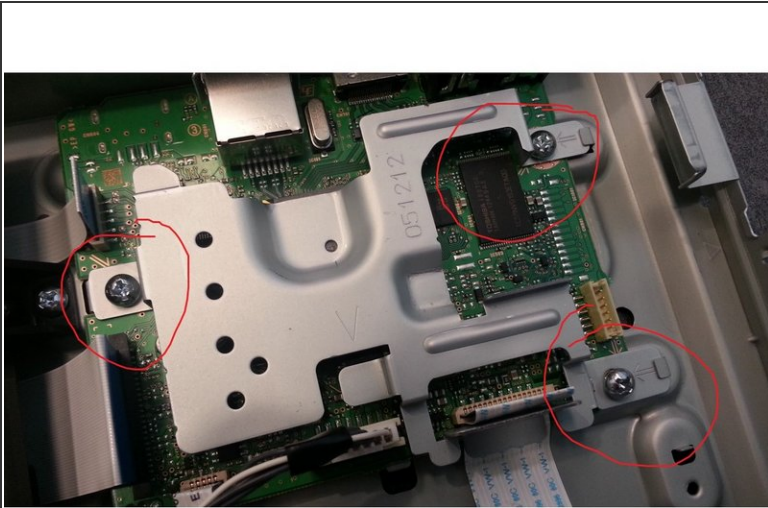
- This should be your current progress thus far.

Step 8



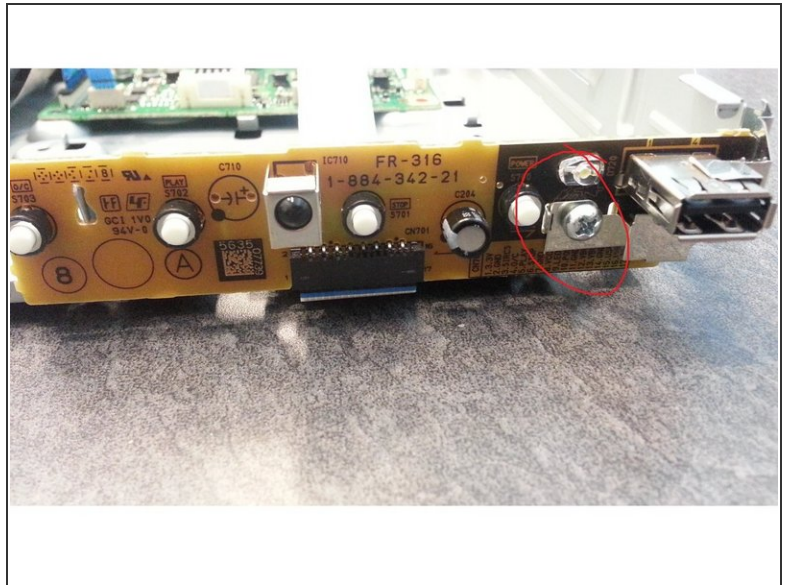
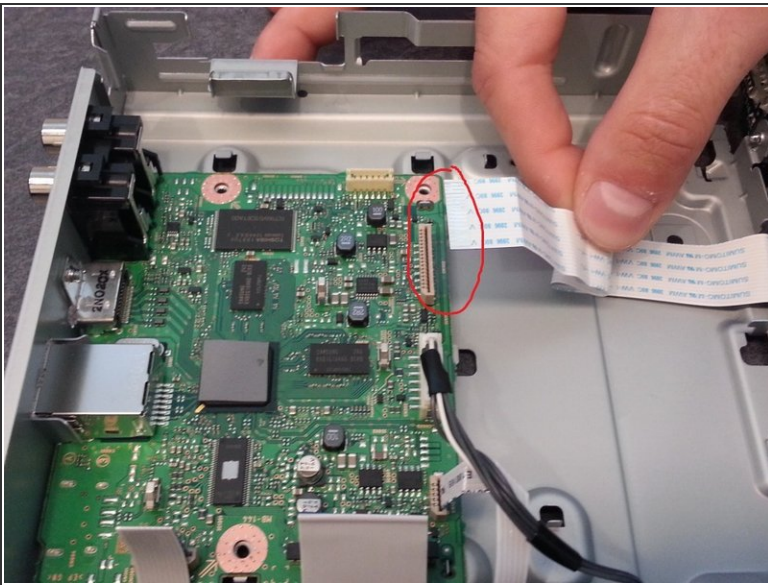
- Release tab to remove plastic power supply shield.

Step 9



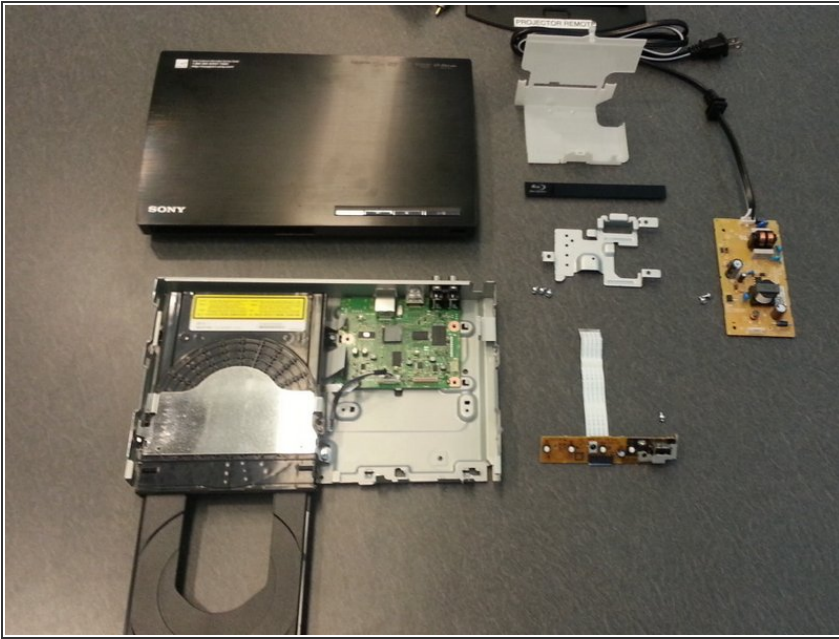
- Remove the three screws.
- Now depress metal tab to fully remove heat sink clamp.

Step 10



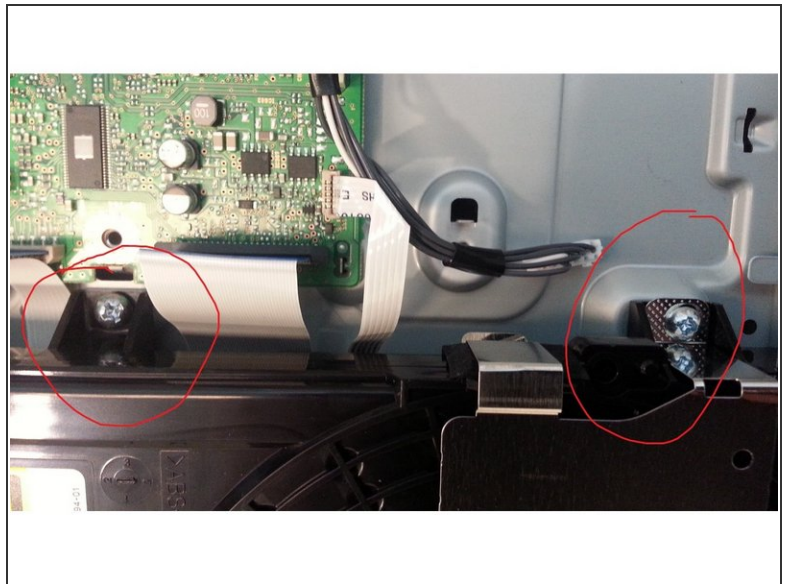
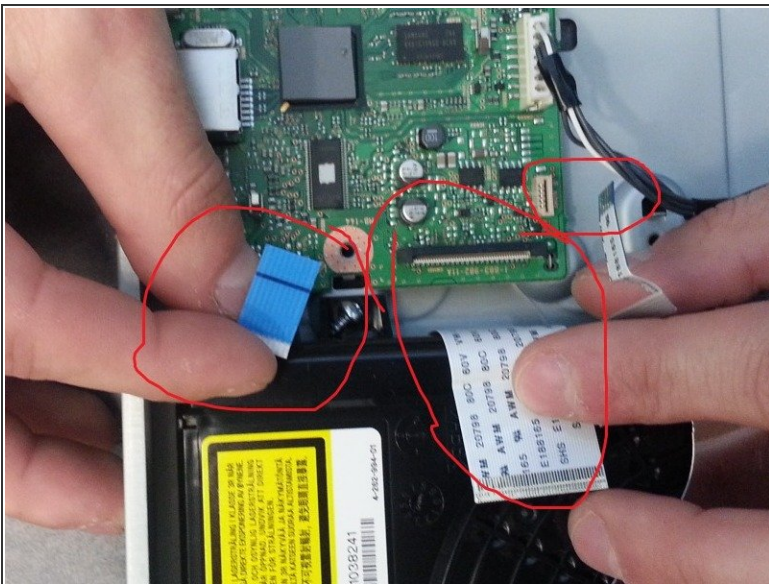
- Pull on indicated ribbon cable to begin removal of front display.
- Now remove single screw to remove front display panel.

Step 11



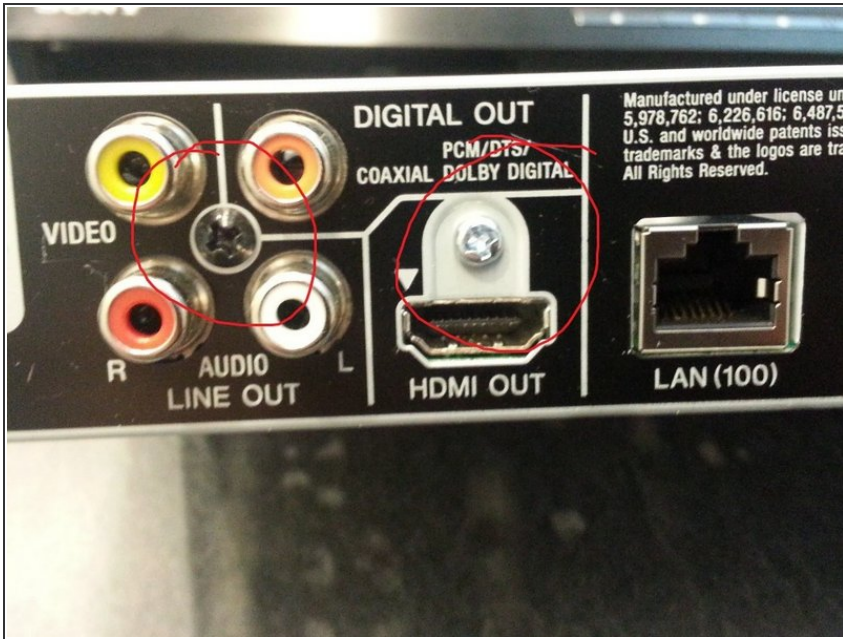
- This should be your current disassembly progress thus far.

Step 12



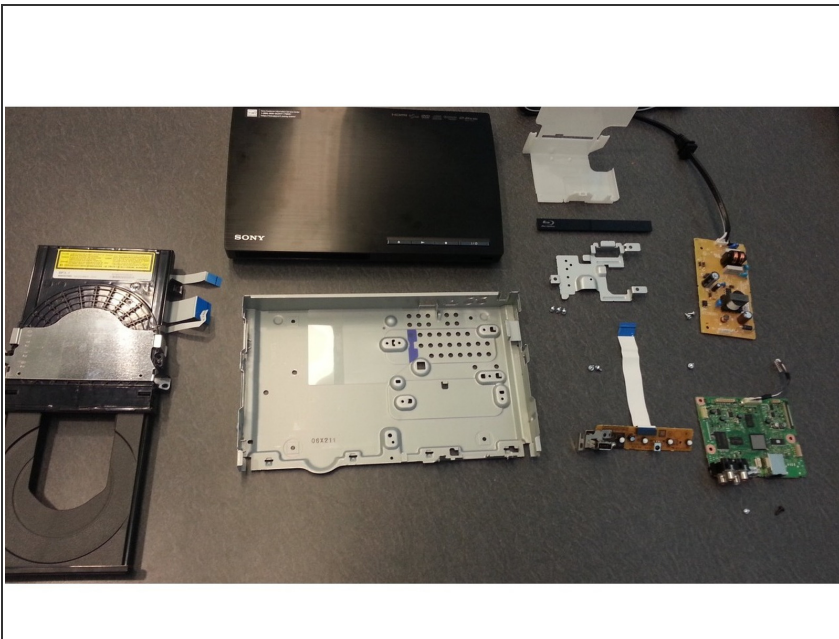
- Next, remove all three ribbon cables attached to optical disc drive.
- ***NOTE:** largest ribbon cable has small secure clamp, be sure to release it before pulling.
- Now unscrew both mounting screw for optical disc drive for complete removal.

Step 13



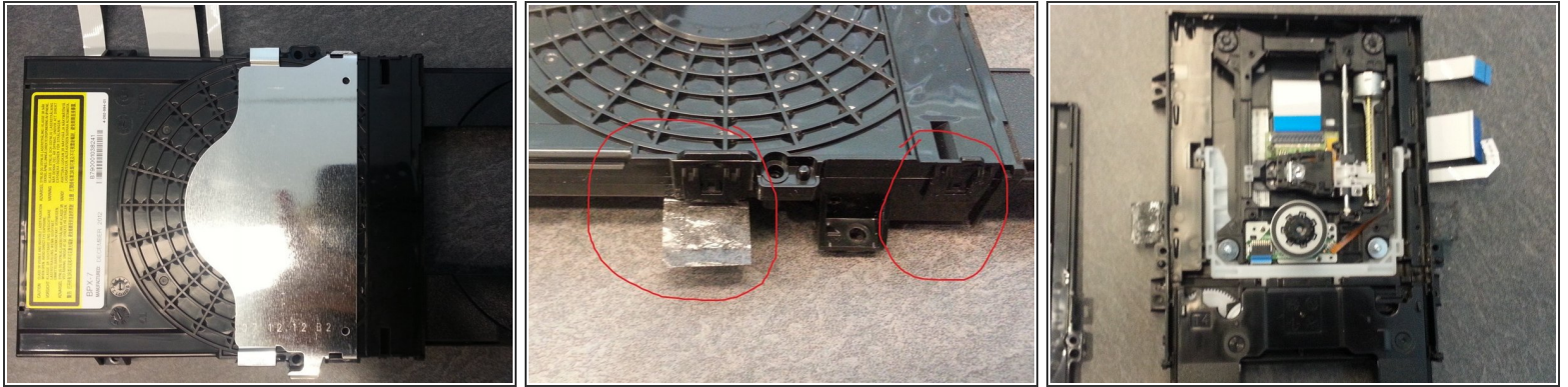
- To completely remove the main board, locate screws on back of unit. Unscrew these 2 screws and then slide main board out.

Step 14



- You should now be completely dis-assembled. For further dis-assembly of the optical disc drive, continue to step 15.

Step 15



- First remove metal shroud exposing tabs.
- Peel back security tape and release all 4 tabs (2 on each side) for removal of top cover.
- Now the internal components of the optical disc drive are now exposed.

To reassemble your device, follow these instructions in reverse order.